

# TURNER RIVERWALK

11860 Pierce Street, Suite 100, Riverside, CA 92505

# FOR SALE



Lee & Associates Commercial Real Estate Services, Inc. - Riverside | 4193 Flat Rock Drive, Suite 100, Riverside, CA 92505 | Corporate DRE #01048055  
Contact Broker's: **RICH ERICKSON**, Senior Vice President, 951.276.3637, rich.erickson@leeriverside.com, DRE 01219183  
**ANDREW PEAKE**, Senior Vice President, 951.276.3644, apeake@leeriverside.com, DRE 01398894  
**MASON WILSON**, Associate, 951.276.3603, mwilson@leeriverside.com, DRE 02163918

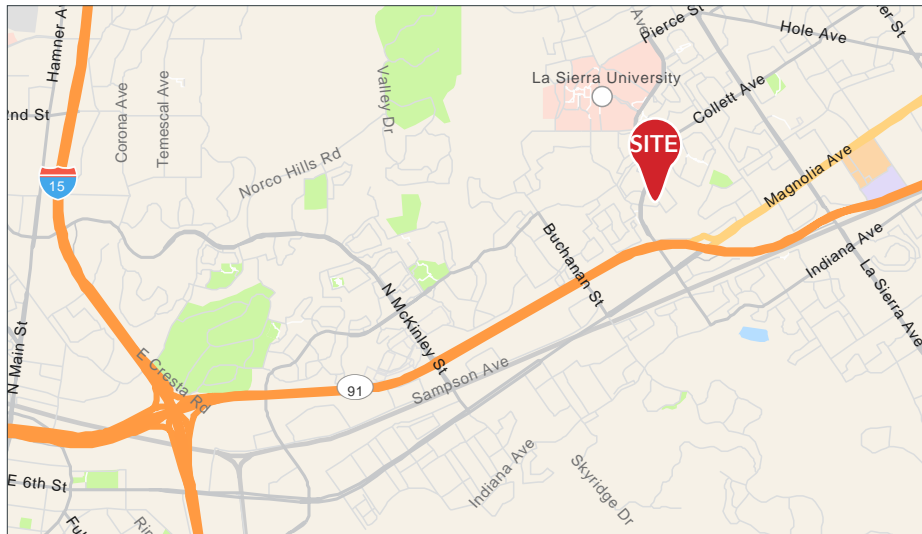
All information furnished regarding property for sale, rental or financing is from sources deemed reliable, but no warranty or representation is made to the accuracy thereof and same is submitted to errors, omissions, change of price, rental or other conditions prior to sale, lease or financing or withdrawal without notice. No liability of any kind is to be imposed on the broker herein.

 **LEE &  
ASSOCIATES**  
COMMERCIAL REAL ESTATE SERVICES

# TURNER RIVERWALK

## PROPERTY FEATURES

- » Suite 100: ±4,180 SF Available for Sale
- » High End Interior Improvements
- » Building Signage Available (Verify with HOA and City of Riverside)
- » Can be delivered vacant at close of escrow
- » Excellent Access to the 91 (Riverside) and I-15 Freeways
- » Office Windows Overlook Lush Landscaping Including Lake & Streams
- » Close Proximity to Retail Services & Restaurants
- » Abundant 4:1,000 Parking Ratio
- » **CALL BROKER FOR PRICING**



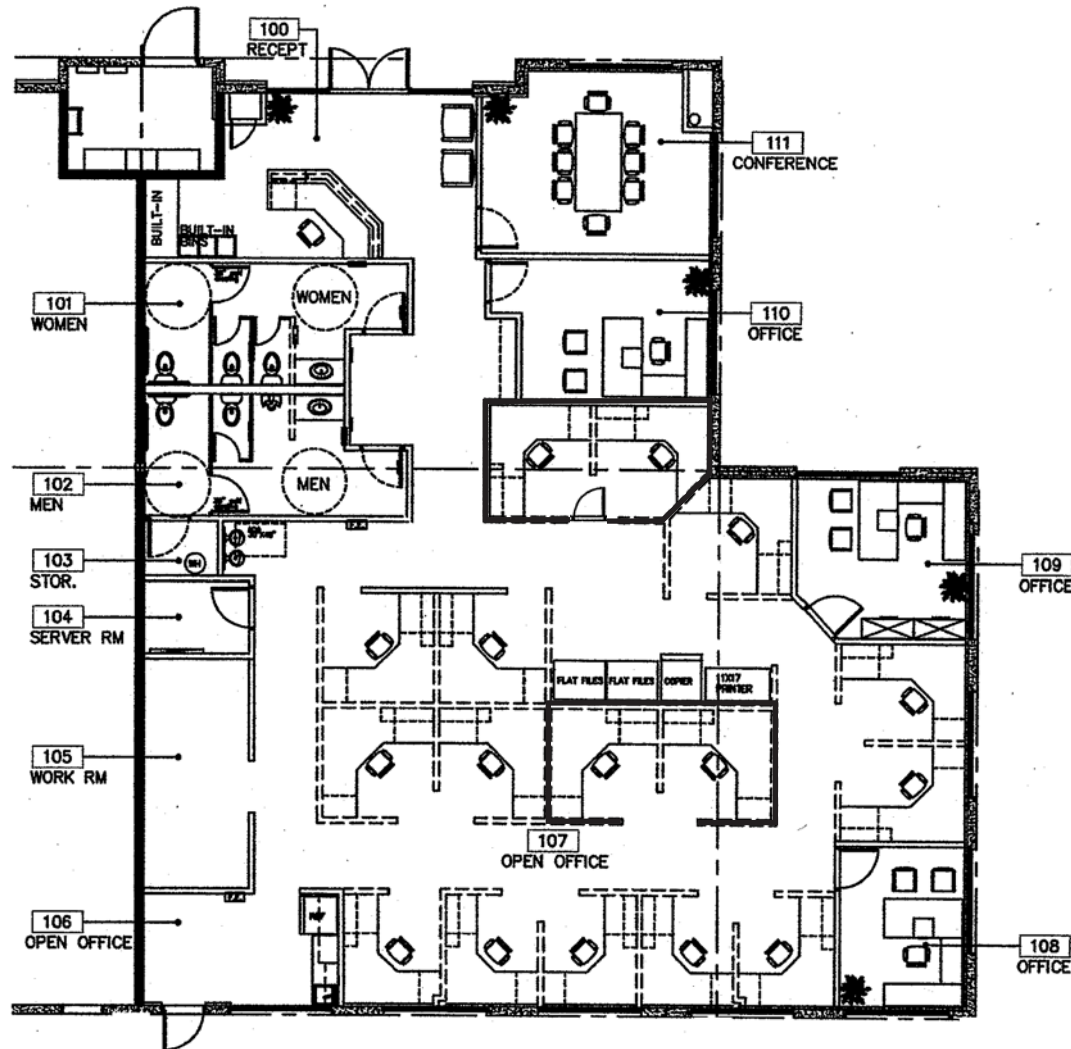
Lee & Associates Commercial Real Estate Services, Inc. - Riverside | 4193 Flat Rock Drive, Suite 100, Riverside, CA 92505 | Corporate DRE #01048055  
Contact Broker's: **RICH ERICKSON**, Senior Vice President, 951.276.3637, rich.erickson@leeriverside.com, DRE 01219183  
**ANDREW PEAKE**, Senior Vice President, 951.276.3644, apeake@leeriverside.com, DRE 01398894  
**MASON WILSON**, Associate, 951.276.3603, mwilson@leeriverside.com, DRE 02163918



All information furnished regarding property for sale, rental or financing is from sources deemed reliable, but no warranty or representation is made to the accuracy thereof and same is submitted to errors, omissions, change of price, rental or other conditions prior to sale, lease or financing or withdrawal without notice. No liability of any kind is to be imposed on the broker herein.

# TURNER RIVERWALK

## FLOOR PLAN



\*For illustrative purposes only. Actual layout has been modified since original construction, please field verify.

Lee & Associates Commercial Real Estate Services, Inc. - Riverside | 4193 Flat Rock Drive, Suite 100, Riverside, CA 92505 | Corporate DRE #01048055  
Contact Broker's: **RICH ERICKSON**, Senior Vice President, 951.276.3637, rich.erickson@leeriverside.com, DRE 01219183  
**ANDREW PEAKE**, Senior Vice President, 951.276.3644, apeake@leeriverside.com, DRE 01398894  
**MASON WILSON**, Associate, 951.276.3603, mwilson@leeriverside.com, DRE 02163918

# AERIAL MAP

# TURNER RIVERWALK



Lee & Associates Commercial Real Estate Services, Inc. - Riverside | 4193 Flat Rock Drive, Suite 100, Riverside, CA 92505 | Corporate DRE #01048055  
Contact Broker's: **RICH ERICKSON**, Senior Vice President, 951.276.3637, rich.erickson@leeriverside.com, DRE 01219183  
**ANDREW PEAKE**, Senior Vice President, 951.276.3644, apeake@leeriverside.com, DRE 01398894  
**MASON WILSON**, Associate, 951.276.3603, mwilson@leeriverside.com, DRE 02163918



All information furnished regarding property for sale, rental or financing is from sources deemed reliable, but no warranty or representation is made to the accuracy thereof and same is submitted to errors, omissions, change of price, rental or other conditions prior to sale, lease or financing or withdrawal without notice. No liability of any kind is to be imposed on the broker herein.