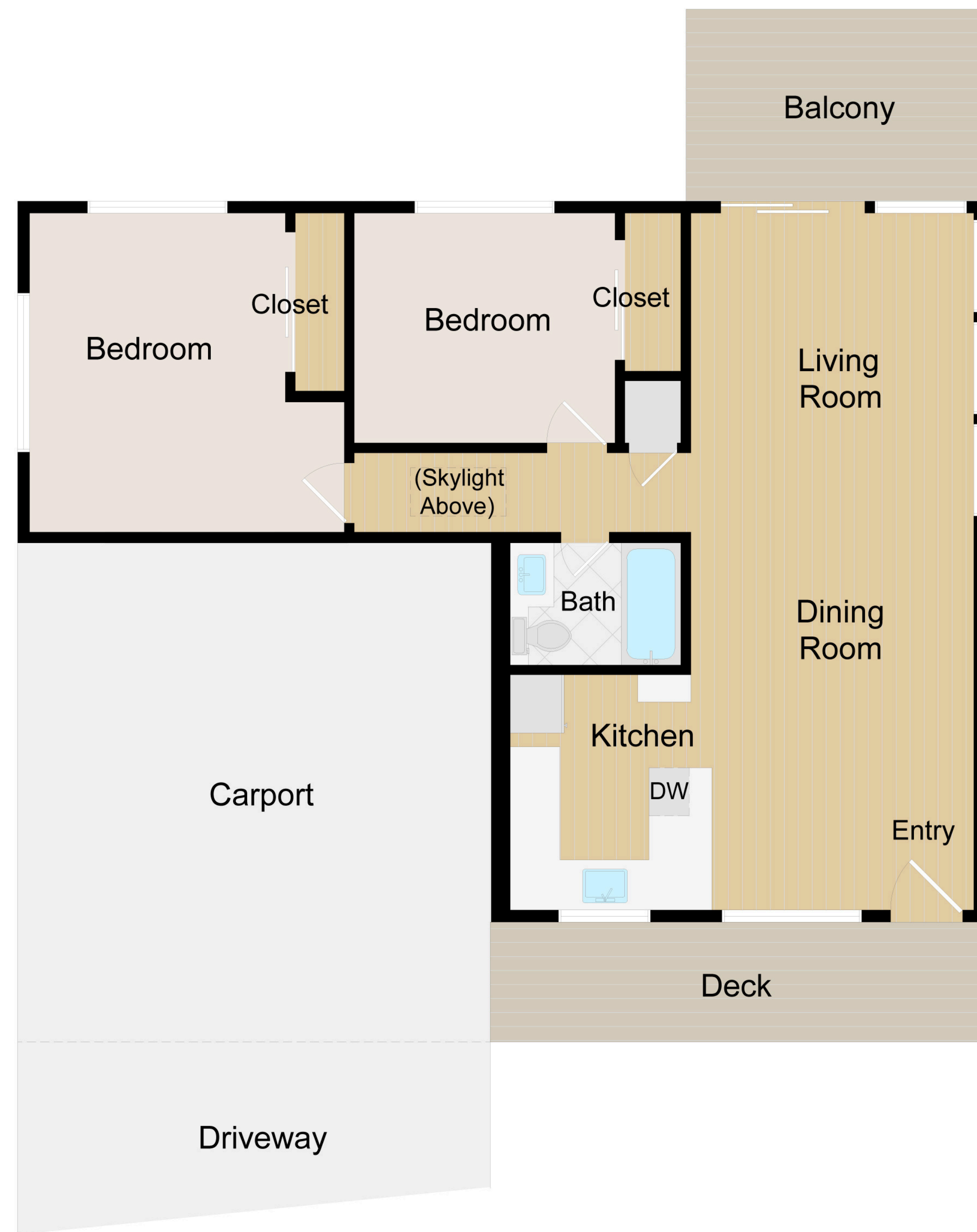


23
Bayo Vista Way

Upper Unit: 2 BR | 1 BA
~880 sq. ft.



25
Bayo Vista Way

Lower Unit: 3 BR | 3 BA
~1225 sq. ft.

Note: Square footage data represents an estimate and has been derived simply for the marketing-style floor plans developed by Open House Drafting, per the exterior face of all boundary walls.

