

# RETAIL SPACE FOR LEASE: SUMMIT AT THE MALL

3755 Bloomfield Road  
Macon, GA 31206



Summary

Area Info

Site Plans

Floor Plans

Aerial

Agent Info

**LEASE NOW: LIMITED TIME PRICE REDUCTION**



## CONTACT

### Lan Heath

478-746-9421 Office  
478-731-5899 Cell  
lheath@fickling.com

### Jenny Howell (Fluent in Spanish)

478-746-9421 Office  
786-449-8523 Cell  
jenny@fickling.com



577 Mulberry St, Suite 1100  
Macon, GA 31201  
478.746.9421 Office  
<https://commercial.fickling.com>

# RETAIL SPACE FOR LEASE: SUMMIT AT THE MALL

3755 Bloomfield Road  
Macon, GA 31206



Summary

Area Info

Site Plans

Floor Plans

Aerial

Agent Info

## PROPERTY INFORMATION

### BUILDING

**Property Address:** 3755 Bloomfield Road  
Macon, GA 31206

**County:** Bibb

**Total Size:** 84,551 SF

**Available:** 2,000 SF - 28,300 SF

**Utilities:** All Available

**Parking:** Paved, on site

**Traffic Count:** Bloomfield Rd: 9,940 VPD  
Mercer University Dr: 26,600 VPD  
Eisenhower Pkwy: 23,963 VPD

### SITE

**Site Size:** 10.33 Acres

**Parcel ID:** M084-0266, M084-0265, M084-0207,  
M084-0015, M084-0222

**Zoning:** PDC

Demographics 2024	1 Mile	3 Miles	5 Miles
Population	5,492	48,703	90,381
Avg HH Income	\$37,144	\$53,007	\$73,779
Median Age	32.1	32.9	35.1

~~LEASE RATE: \$12.00/PSF~~

**REDUCED RATE\*: \$11.00/PSF MG Inline Space**

\*Terms & Conditions Apply

### CONTACT

**Lan Heath**  
478-746-9421 Office  
478-731-5899 Cell  
lheath@fickling.com

**Jenny Howell (Fluent in Spanish)**  
478-746-9421 Office  
786-449-8523 Cell  
jenny@fickling.com



577 Mulberry St, Suite 1100  
Macon, GA 31201  
478.746.9421 Office  
<https://commercial.fickling.com>

# RETAIL SPACE FOR LEASE: SUMMIT AT THE MALL

3755 Bloomfield Road  
Macon, GA 31206



Summary

Area Info

Site Plans

Floor Plans

Aerial

Agent Info

## SHOPPING CENTER

Summit at the Mall offers highly visible retail spaces in a prime high-traffic location, ranging from 2,000 – 28,300 SF, with competitive lease rates. The tenant roster includes Truist Bank, Foot Locker, Rent-A-Center, Pizza Hut, and No Name Chicken.

## LOCATION

Located directly behind Macon Mall and steps away from the new 12,000-seat Atrium Health Amphitheatre, which has hosted sold-out concerts since opening, this site benefits from exceptional visibility and year-round activity. The Atrium Health Amphitheater is part of a \$150 million revitalization initiative that also includes the world's largest indoor pickleball facility, which has already successfully hosted multiple tournaments—bringing a significant boost to daytime population

and visitor traffic. [Atrium Health Amphitheatre](#)

As part of the same redevelopment effort, Macon-Bibb County has relocated numerous government offices to the Macon Mall, bringing nearly 900 employees on site and further strengthening activity, employment, and economic momentum in the area.



## CONTACT

### Lan Heath

478-746-9421 Office  
478-731-5899 Cell  
lheath@fickling.com

### Jenny Howell (Fluent in Spanish)

478-746-9421 Office  
786-449-8523 Cell  
jenny@fickling.com



577 Mulberry St, Suite 1100  
Macon, GA 31201  
478.746.9421 Office  
<https://commercial.fickling.com>

# RETAIL SPACE FOR LEASE: SUMMIT AT THE MALL

3755 Bloomfield Road  
Macon, GA 31206



Summary

Area Info

Site Plans

Floor Plans

Aerial

Agent Info

## Site Plan



### AVAILABILITY - INLINE SPACE

Suite	SF	Monthly Modified Gross Rent
3	2,000	\$1,835
9	2,500	\$2,292

### AVAILABILITY - ANCHOR SPACE

Suite	SF	Monthly Modified Gross Rent
1	28,300	\$16,500
16	10,350	\$6,000

#### CONTACT

**Lan Heath**  
478-746-9421 Office  
478-731-5899 Cell  
lheath@fickling.com

**Jenny Howell (Fluent in Spanish)**  
478-746-9421 Office  
786-449-8523 Cell  
jenny@fickling.com



577 Mulberry St, Suite 1100  
Macon, GA 31201  
478.746.9421 Office  
<https://commercial.fickling.com>

# RETAIL SPACE FOR LEASE: SUMMIT AT THE MALL

3755 Bloomfield Road  
Macon, GA 31206



Summary

Area Info

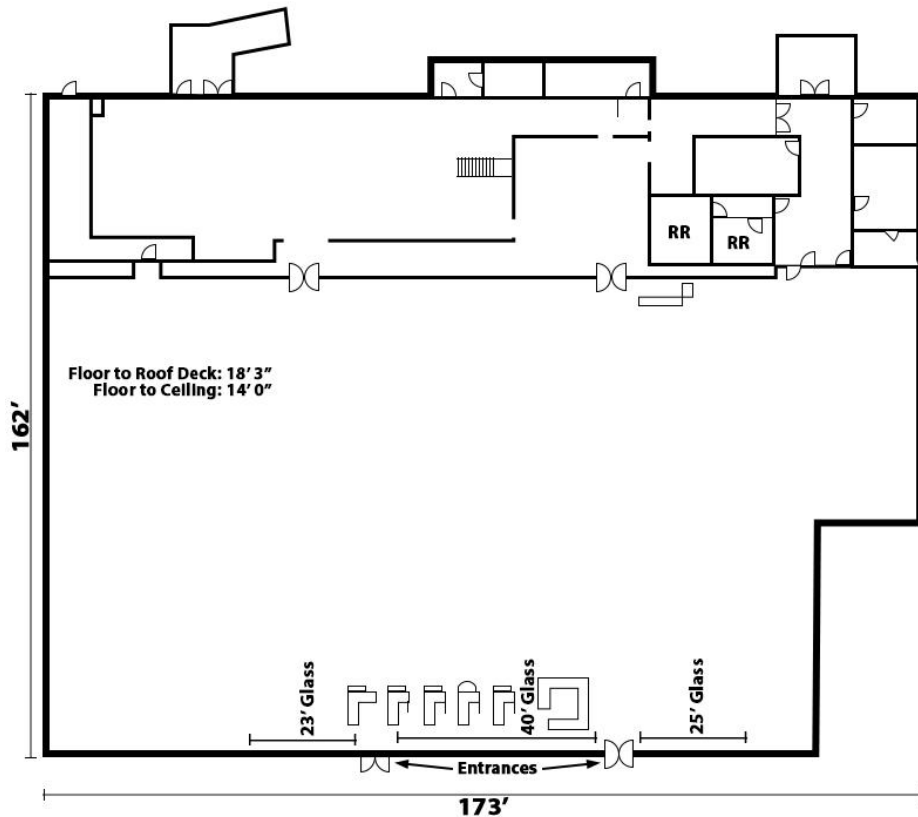
Site Plans

Floor Plans

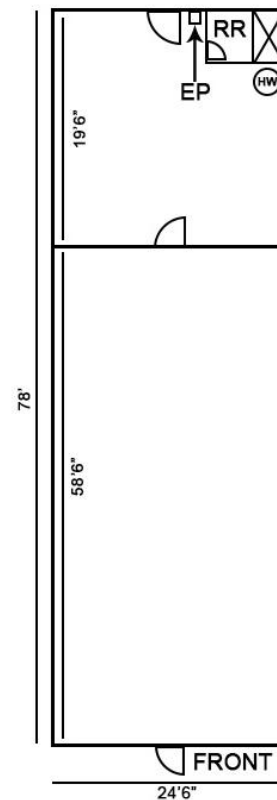
Aerial

Agent Info

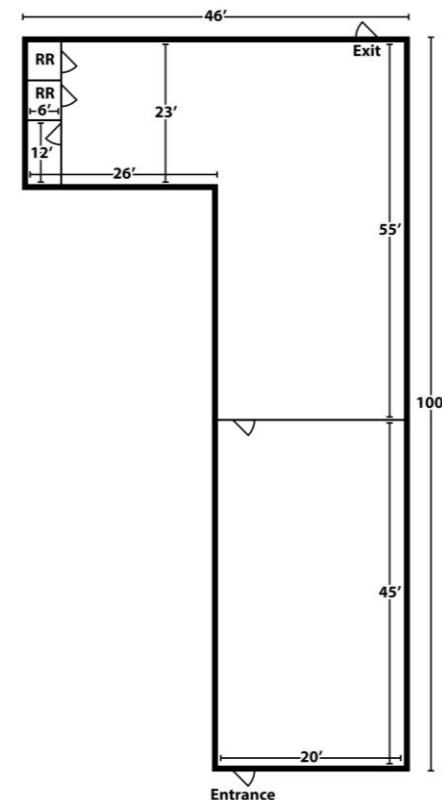
Suite 1



Suite 3



Suite 9



\*All measurements and all calculations of area are approximate and not guaranteed

## CONTACT

**Lan Heath**  
478-746-9421 Office  
478-731-5899 Cell  
lheath@fickling.com

**Jenny Howell (Fluent in Spanish)**  
478-746-9421 Office  
786-449-8523 Cell  
jenny@fickling.com



577 Mulberry St, Suite 1100  
Macon, GA 31201  
478.746.9421 Office  
<https://commercial.fickling.com>

# RETAIL SPACE FOR LEASE: SUMMIT AT THE MALL

3755 Bloomfield Road  
Macon, GA 31206



Summary

Area Info

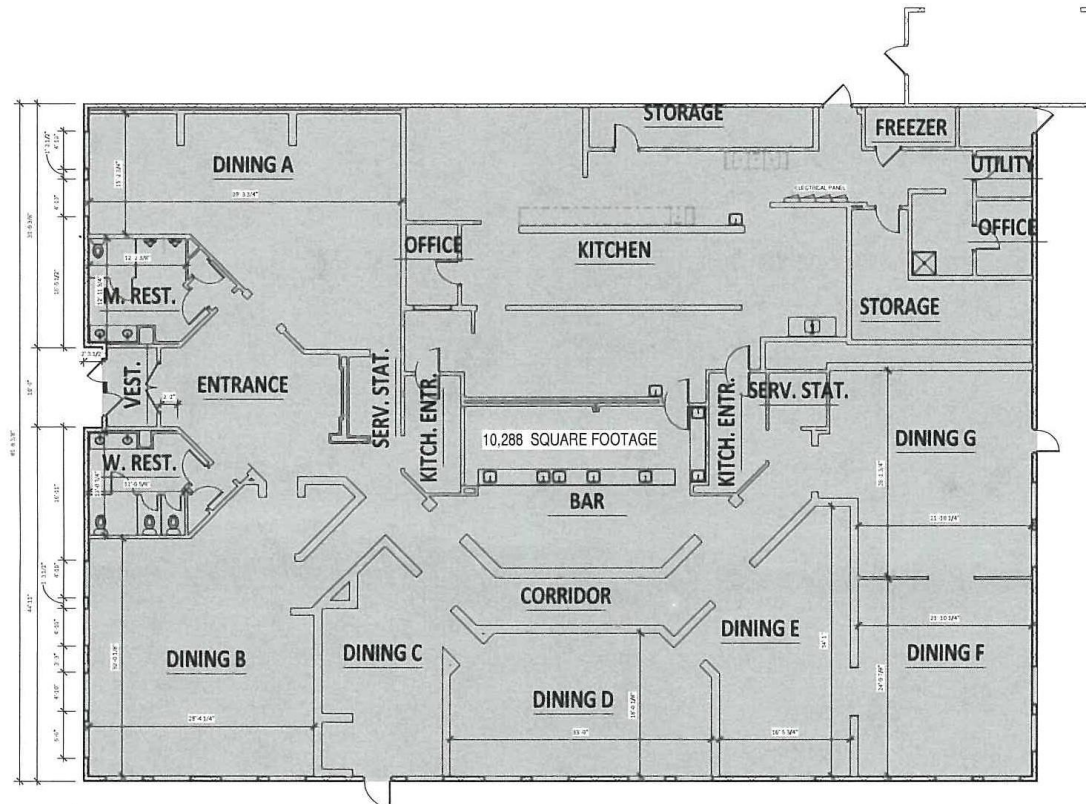
Site Plans

Floor Plans

Aerial

Agent Info

## Suite 16 - Restaurant Space



\*All measurements and all calculations of area are approximate and not guaranteed

### CONTACT

**Lan Heath**  
478-746-9421 Office  
478-731-5899 Cell  
lheath@fickling.com

**Jenny Howell (Fluent in Spanish)**  
478-746-9421 Office  
786-449-8523 Cell  
jenny@fickling.com



577 Mulberry St, Suite 1100  
Macon, GA 31201  
478.746.9421 Office  
<https://commercial.fickling.com>

# RETAIL SPACE FOR LEASE: SUMMIT AT THE MALL

3755 Bloomfield Road  
Macon, GA 31206



Summary

Area Info

Site Plans

Floor Plans

Aerial

Agent Info



- FINISH LINE
- Durlington
- OLE TIMES COUNTRY BUFFET & BAKS-QUE
- B. Turner
- Durlington
- PET LAND
- WATCHES Unlimited
- Treasures Jewelry
- John Smeal
- MARABLE DENTAL CENTER
- Ivy Nail & Spa
- Salon
- FIX & STYLE
- Clackwork
- NEW SQUARE
- JIMMY JAZZ
- BURGUNDY
- AUTHENTIKS
- rue21

## CONTACT

**Lan Heath**  
478-746-9421 Office  
478-731-5899 Cell  
lheath@fickling.com

**Jenny Howell (Fluent in Spanish)**  
478-746-9421 Office  
786-449-8523 Cell  
jenny@fickling.com



577 Mulberry St, Suite 1100  
Macon, GA 31201  
478.746.9421 Office  
<https://commercial.fickling.com>

# RETAIL SPACE FOR LEASE: SUMMIT AT THE MALL

3755 Bloomfield Road  
Macon, GA 31206



Summary

Area Info

Site Plans

Floor Plans

Aerial

Agent Info

## Presented by: Lan Heath

Lan has extensive experience in the commercial and multi-family development fields. He started in that industry as a founding principal with Heath & Associates, Inc. and MMI Capital, LLC. In October 1995. Those companies focused on development, investment, finance and management of multi-family market rate and tax credit properties (section 42), as well build-to-suit commercial investment properties leased to federal, state and county governmental agencies and fortune 1000 corporate customers. He was responsible for the development, finance, and management of nearly 500,000 square feet of space in five southeastern states.

Since joining the Fickling Team in October of 2019 his focus has been in retail center, industrial, automotive, warehousing and distribution owner representation, sales, leasing and investment.

## Presented by: Jenny Howell

With over two decades of experience in sales, marketing, and business development, Jenny Howell combines global hospitality expertise with deep commercial real estate insight. Before entering real estate, Jenny was Director of Sales and Marketing for luxury resorts in Miami Beach, where she led diverse teams and managed multimillion-dollar accounts. Her background negotiating with international clients and driving large-scale revenue growth now informs her success in brokerage.

Jenny represents industrial and medical tenants, national franchisees, and institutional landlords, specializing in land sales for commercial and multifamily development. Fluent in English, Spanish (native), and Portuguese, she connects seamlessly across markets and cultures. An active community leader, Jenny serves on the Board of Directors for the Greater Macon Chamber of Commerce, volunteers with Visit Macon, and is a proud member of CCIM (Candidate), ACBR, and GHCC.

## CONTACT

### Lan Heath

478-746-9421 Office  
478-731-5899 Cell  
lheath@fickling.com

### Jenny Howell (Fluent in Spanish)

478-746-9421 Office  
786-449-8523 Cell  
jenny@fickling.com



577 Mulberry St, Suite 1100  
Macon, GA 31201  
478.746.9421 Office  
<https://commercial.fickling.com>