

For Sublease

Contact us:

Phil James

Senior Vice President
+1 816 556 1125
phil.james@colliers.com

Colliers Kansas City

4520 Main Street, Suite 1000
Kansas City, Missouri 64111
P: +1 816 531 5303
colliers.com/kansascity

4551 W. 107th Street Overland Park, Kansas

Property Highlights

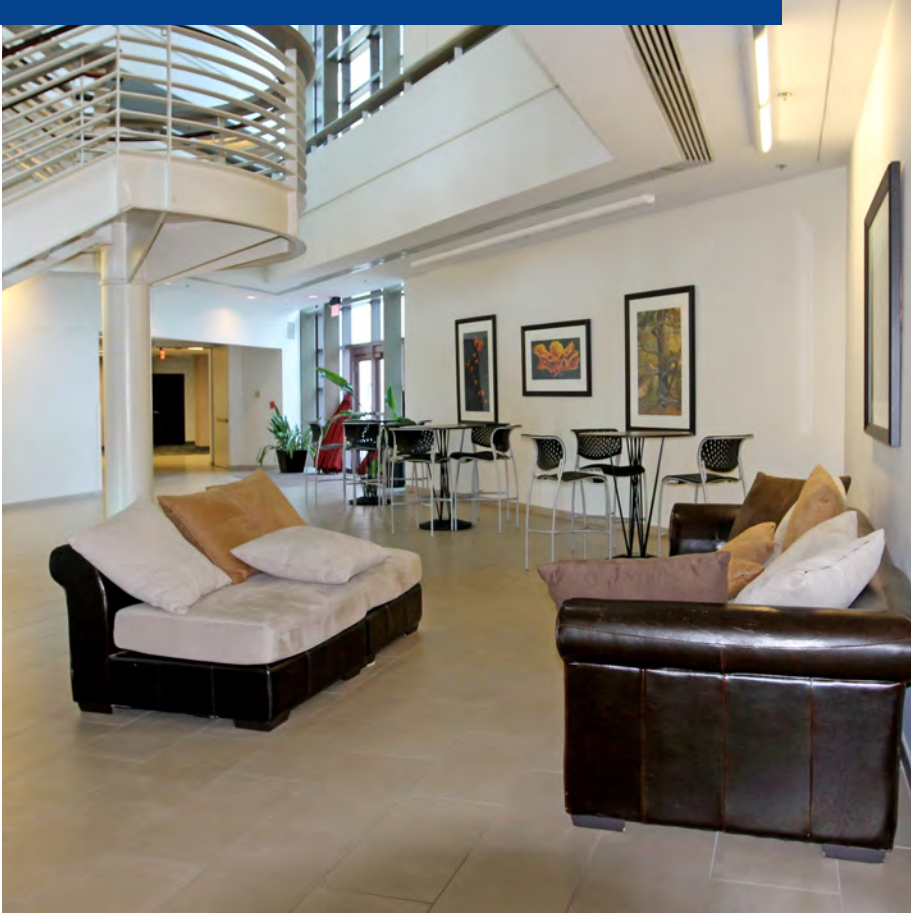
- Total building: 84,391 SF on three floors
- Completely remodeled in 2022 including a three-story atrium lobby, two glass elevators, restrooms, and common areas
- Turnkey finish, move-in condition. Furniture available.
- New roof, parking lot, and exterior paint completed in 2022
- Convenient access to all points of the metro with direct access to I-435
- Internet providers: AT&T, Spectrum, and Level 3
- Parking ratio: 4/1,000 SF surface spaces
- Numerous walkable amenities

Available Space

- Suite 250: 11,438± RSF
- Flexible sublease term lengths
- Lease rate: \$20.00 PSF

4551 W. 107th Street

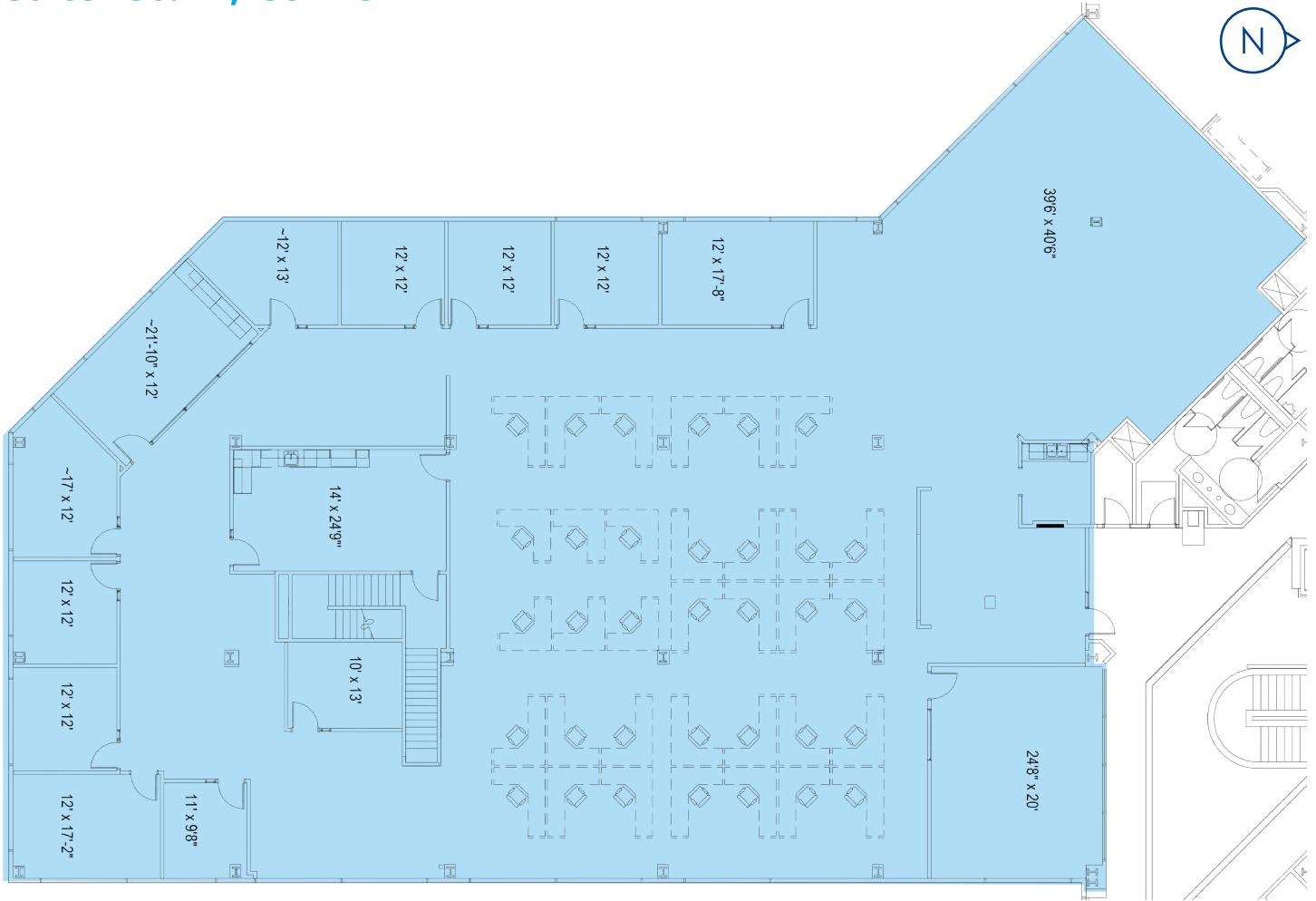
Property Gallery



4551 W. 107th Street

Floor Plan

Suite 250: 11,438± RSF





Location Aerial



Phil James

Senior Vice President
 +1 816 556 1125
 phil.james@colliers.com

Colliers Kansas City
 4520 Main Street, Suite 1000
 Kansas City, MO 64111
 +1 816 531 5303
 colliers.com/kansascity

This document has been prepared by Colliers for advertising and general information only. Colliers makes no guarantees, representations or warranties of any kind, expressed or implied, regarding the information including, but not limited to, warranties of content, accuracy and reliability. Any interested party should undertake their own inquiries as to the accuracy of the information. Colliers excludes unequivocally all inferred or implied terms, conditions and warranties arising out of this document and excludes all liability for loss and damages arising there from. This publication is the copyrighted property of Colliers and/or its licensor(s). © 2024. All rights reserved. This communication is not intended to cause or induce breach of an existing listing agreement.

