

2800 DUNCAN ROAD | LAFAYETTE, IN 47904

- █ AVAILABLE
- █ SHARED SPACE
- █ LANDIS GYR

PLAN NOTES:

- ① PROVIDE WALKER #275 FLUSH WITH (1) WALKER #2025-3/4 COVER PLATE FOR POWER AND (2) WALKER #2025-1 FOR DATA AS SHOWN W/LEK TO FURNITURE PARTITIONS.
- ② PROVIDE (2) 2 GANG BOXES FLUSH, ONE FOR DATA/TEL AND ONE FOR POWER (NORMAL), W/LEK TO FURNITURE PARTITIONS MOUNT AT 4'-6".
- ③ ALL WALL TEL/DATA = 2 GANG FLUSH BOX W/1" STUBBED OUT ABOVE CEILING W/BUISHING. (TYPICAL)
- ④ EACH PREWIRED FURNITURE PARTITION SHALL RECEIVE CAT. 5 CABLE FOR VOICE/DATA AND STANDARD POWER. MAXIMUM OF (3) COMPUTERS PER CIRCUIT. (TYPICAL) CAT. 5 CABLE DESIGN, LAYOUT AND TERMINATION BY SIEMENS "I.T." GROUP.
- ⑤ REFER TO TYPICAL ELEVATOR DETAIL.
- ⑥ (TYPICAL) FLUSH IN CONCRETE FLOOR BOX LIKE WALKER #2025-1 BOX W/275 BRASS FLUSH ACTIVATION WITH CARPET TRIM, #2025 BRASS FLUSH LIDS, AND ONE (1) DUBLEX RECEPT AND TELEPHONE/DATA BRACKET FOR TWO (2) RJ TYPE SOCKETS. (2) SHALL VERIFY EXACT LOCATION OF EACH FLOOR BOX PRIOR TO ROUGH-IN. THE LOCATIONS SHALL BE COORDINATED WITH THE LATEST FURNITURE LAYOUT. VERIFY WITH ARCHITECT.
- ⑦ TYPICAL - RADIANT RADIATION HEAT LINE 0-MARK #14 SERIES, LENGTH AS SHOWN, 180W/F, 277V, 01/25 PER ARCHITECT - SIMIT DETAIL 1/2000 OR 1/1100 PLANS SHOWING LAYOUT. PROVIDE FILLER/BARS AS NEEDED FOR "CONTINUOUS" FIN.
- ⑧ 1/8"X6" W.L. - HEATER LINE 0-MARK #AHH-277 SERIES, 1.5HP.
- ⑨ NOT USE.
- ⑩ NOT USE.
- ⑪ NOT USE.
- ⑫ 2-4°C. BETWEEN TEL/ELEC #14 AND TEL/ELEC #142. (1) DATA/TEL CABLES.
- ⑬ TYPICAL - VAV'S 12W AND LARGER ARE 480/2L AND 8W AND SMALLER ARE 277/1. SEE TYPICAL VAV SCHEDULES ON SHEET 5000.
- ⑭ RECEPTACLE FOR FUTURE SUMP PUMP, LOCATE 10'-6" FROM SUMP PVT @ +12" ON WALL E.C. TO VERIFY EXACT LOCATION.
- ⑮ THESE OUTLETS TO BE ON EMERGENCY GENERATOR SERVICE. (RECEPTABLES TO BE "RED")

The Schneider Corporation
 1000 North Bond Street
 47304-6608
 317-497-4000
 Fax: 317-497-4000

Electrical Services
 Power Quality
 Land Surveying
 Environmental Engineering
 Mechanical Engineering
 Transportation Engineering

F&G ENGINEERS, INC.
 MECHANICAL
 ELECTRICAL
 PLUMBING
 CONSULTANTS

1000 North Bond Street
 47304-6608
 317-497-4000
 Fax: 317-497-4000

Siemens Real Estate Services, Inc.
 SIEMENS-Lafayette Meter Facility
 361 Sagamore Parkway North

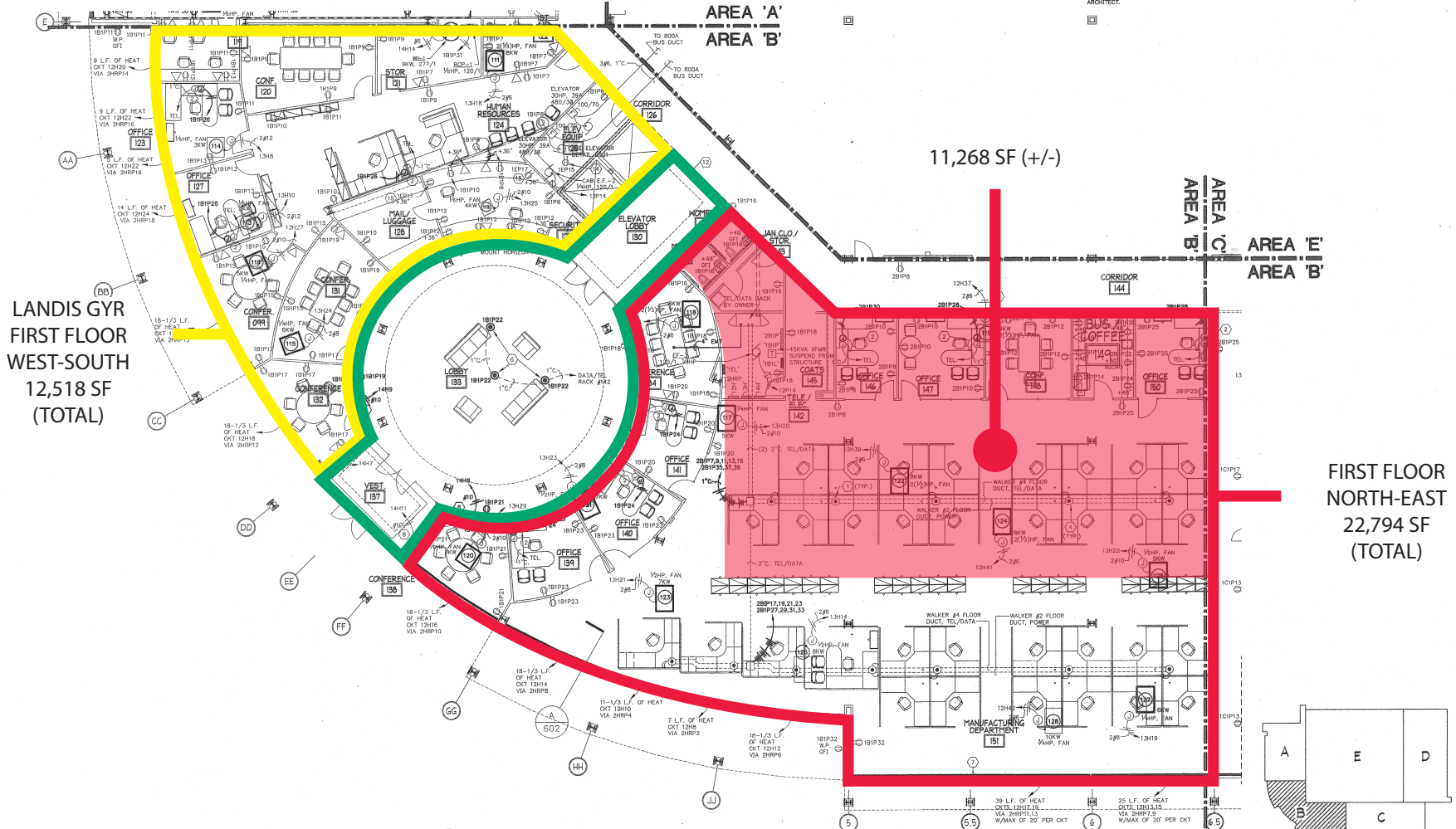
RELEASE

THE DRAWING AND THE SEAL HEREON ARE HEREBY OFFICIALLY RELEASED AND THE SIGNATURE, REGISTRATION NUMBER AND EXPIRATION DATE OF THE SEAL ARE HEREBY OFFICIALLY VERIFIED AND THE DRAWING IS HEREBY MADE A PART OF THE RECORD OF THE PROJECT.

REVISIONS

NO.	DESCRIPTION	DATE
1	ISSUED FOR CONSTRUCTION	12/15/99
2	MEP CONSTRUCTION DOCUMENTS	1/12/2000
3	PROFESSIONAL EXEMPT BY	5/10/2000
4	DUAL AS-BUILT DRAWINGS	4/23/2002

DATE: 12-15-99 PROJECT NO.: 94073
 DRAWN BY: RDN CHECKED BY: MLH
 SHEET NO.: FIRST FLOOR UNIT 'B' POWER
 SHEET NO.: E202

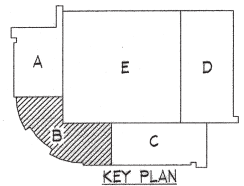


LANDIS GYR
 FIRST FLOOR
 WEST-SOUTH
 12,518 SF
 (TOTAL)

11,268 SF (+/-)

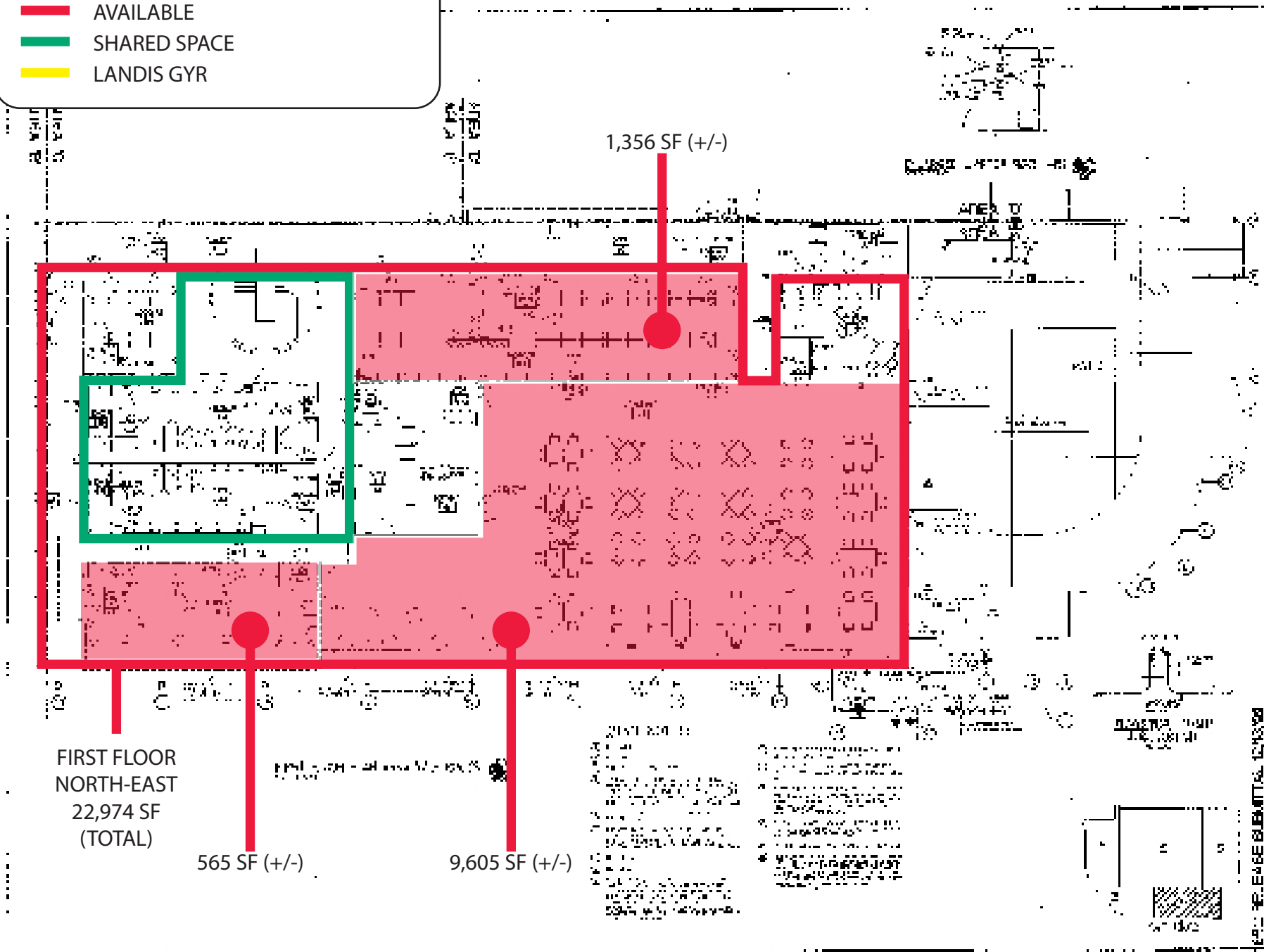
FIRST FLOOR
 NORTH-EAST
 22,794 SF
 (TOTAL)

FIRST FLOOR PLAN AREA 'B' - POWER
 SCALE: 1/8"=1'-0"



SBC RELEASE SUBMITTAL 12/13/99

- █ AVAILABLE
- █ SHARED SPACE
- █ LANDIS GYR



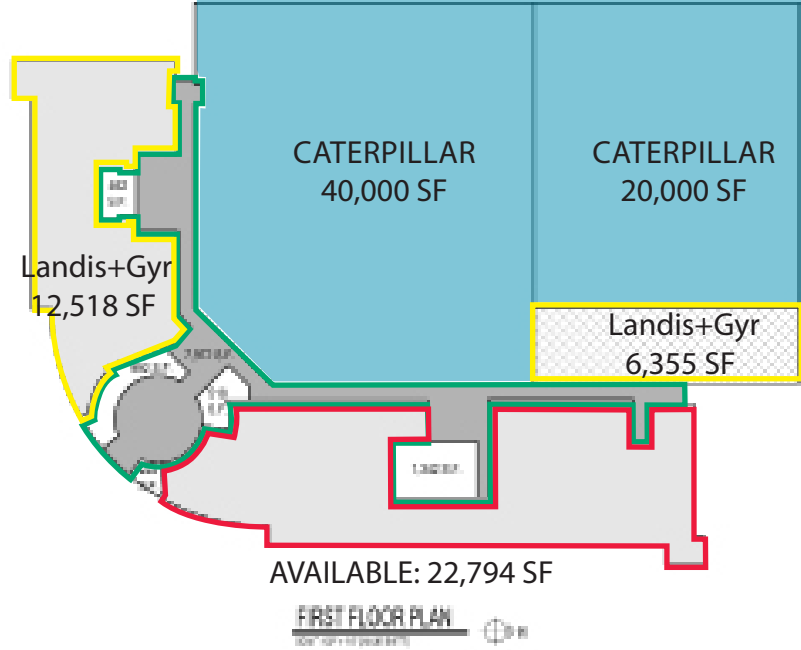
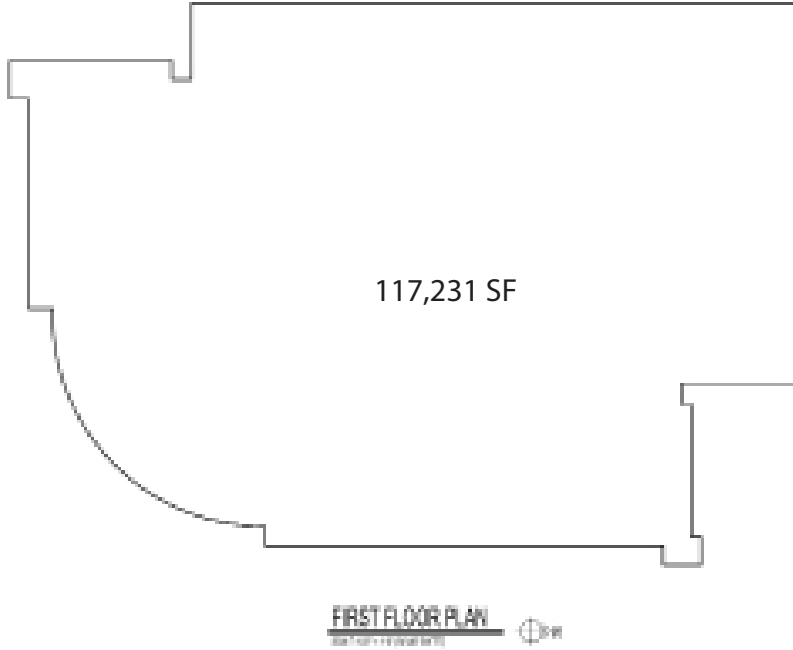
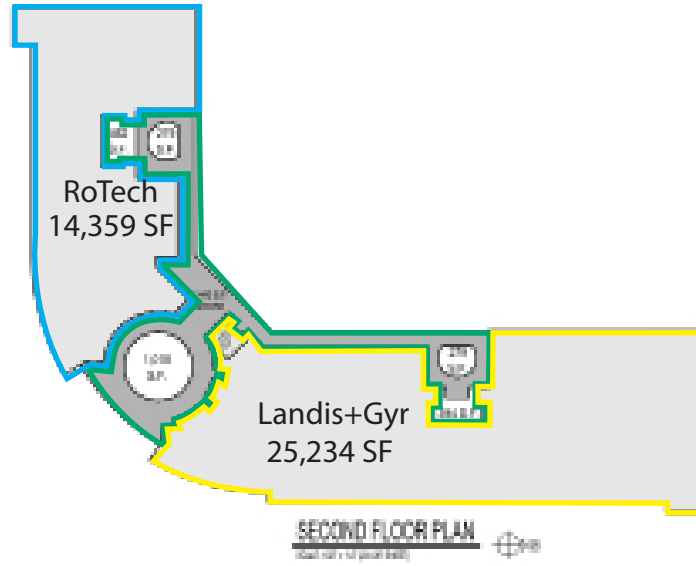
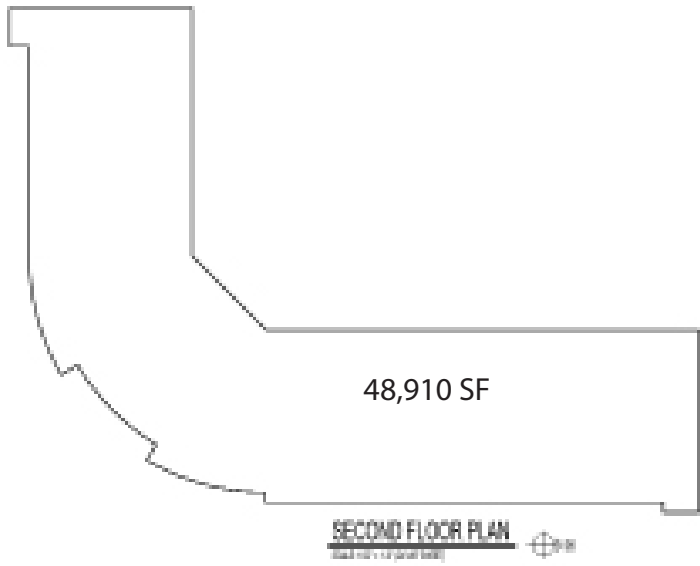
1,356 SF (+/-)

FIRST FLOOR
NORTH-EAST
22,974 SF
(TOTAL)

565 SF (+/-)

9,605 SF (+/-)

GENERAL CONTRACTOR	LANDIS GYR
ARCHITECT	LANDIS GYR
MECHANICAL	LANDIS GYR
ELECTRICAL	LANDIS GYR
PLUMBING	LANDIS GYR
PAINTING	LANDIS GYR
CONCRETE	LANDIS GYR
GLASS	LANDIS GYR
STEEL	LANDIS GYR
WOOD	LANDIS GYR
MECHANICAL	LANDIS GYR
ELECTRICAL	LANDIS GYR
PLUMBING	LANDIS GYR
PAINTING	LANDIS GYR
CONCRETE	LANDIS GYR
GLASS	LANDIS GYR
STEEL	LANDIS GYR
WOOD	LANDIS GYR



ARKOR

PERMANENT PLUMBING
FOR THE REMODEL

LANDIS & GYR
OFFICE REMODEL
117 North 4th Street, Suite 1
Lafayette, Indiana 47901

DATE:	
BY:	
PROJECT:	
NO.:	
REV.:	
DATE:	
BY:	
PROJECT:	
NO.:	
REV.:	

PC-21001
BUILDING
AREAS

X101