

±15,900 SF Dock-Loaded Space

450 KANSAS ST, UNIT 105 | REDLANDS, CA



Building Features

- + ±15,900 SF unit within a larger two-building business park
- + ±1,050 SF Office
- + 1 Dock high door and 1 ground level door
- + 24' Minimum clear height
- + 2% Skylights
- + 400 amps, 277/480 volt, 3 phase power (Tenant to confirm)
- + ESFR sprinkler system
- + Great business park environment
- + Close proximity to I-10 freeway

Contact Us

Ryan Athens

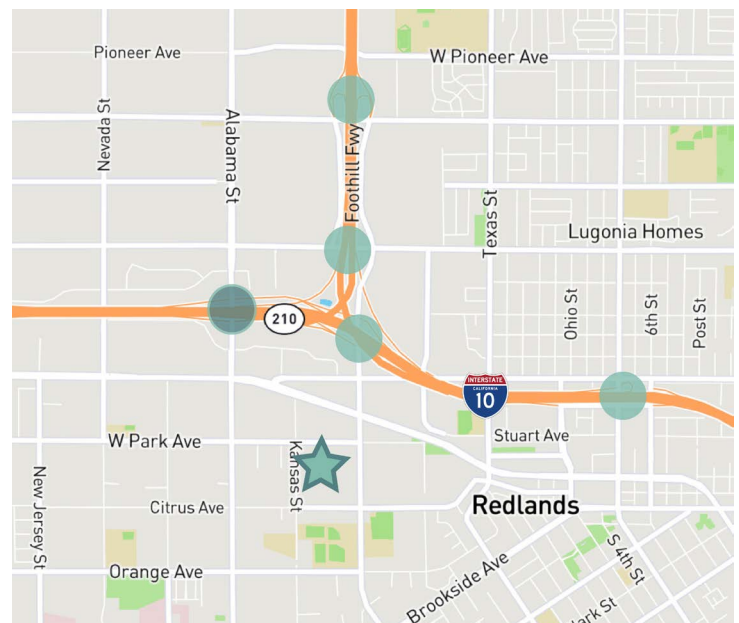
+1 909 418 2021
ryan.athens@cbre.com
Lic. 01387750

Jeff Fritch

+1 909 456 6106
jeff.fritch@cbre.com
Lic. 01857956

Alexander Davis

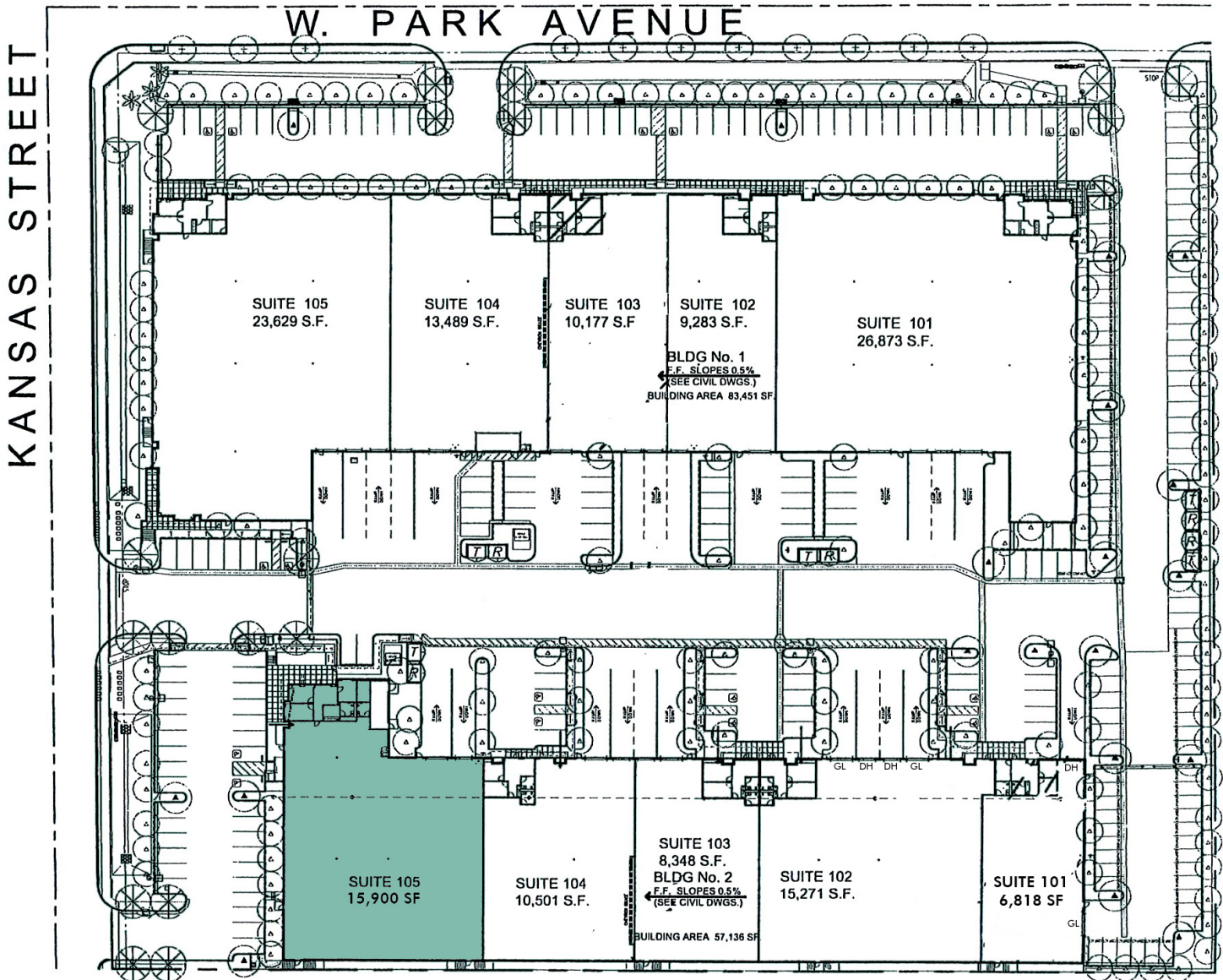
+1 909 418 2079
alexander.davis@cbre.com
Lic. 02221838



AVAILABLE FOR LEASE

450 KANSAS St, UNIT 105 | REDLANDS, CA

±15,900 SF



© 2025 CBRE, Inc. All rights reserved. This information has been obtained from sources believed reliable, but has not been verified for accuracy or completeness. You should conduct a careful, independent investigation of the property and verify all information. Any reliance on this information is solely at your own risk. CBRE and the CBRE logo are service marks of CBRE, Inc. All other marks displayed on this document are the property of their respective owners, and the use of such logos does not imply any affiliation with or endorsement of CBRE. Photos herein are the property of their respective owners. Use of these images without the express written consent of the owner is prohibited.