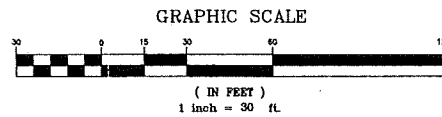


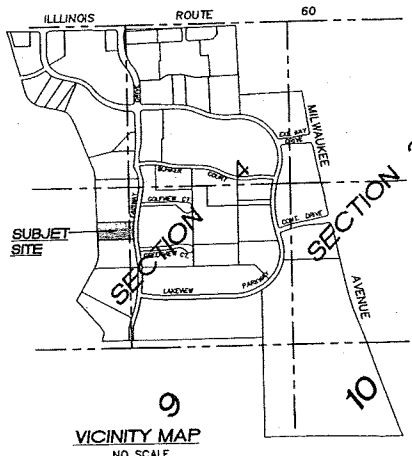
ALTA / ACSM LAND TITLE SURVEY

PROPERTY DESCRIPTION:

LOTS 93 THROUGH 103, INCLUSIVE, IN CONTINENTAL EXECUTIVE PARKE - PHASE II, A SUBDIVISION OF PART OF SECTION 4, TOGETHER WITH PARTS OF THE SOUTHWEST QUARTER OF SECTION 3, THE NORTHWEST QUARTER OF SECTION 10 AND THE NORTHEAST QUARTER OF SECTION 9, ALL IN TOWNSHIP 43 NORTH, RANGE 11, EAST OF THE THIRD PRINCIPAL MERIDIAN, ACCORDING TO THE PLAT THEREOF RECORDED JUNE 17, 1992 AS DOCUMENT NUMBER 3173978, LAKE COUNTY, ILLINOIS.



ASSUMED MERIDIAN



NOTES:

- 1) ALL EASEMENTS AND BUILDING SETBACK LINES WERE GRANTED PER DOCUMENT NO. 3173978 UNLESS OTHERWISE NOTED.
- 2) FAIRWAY DRIVE IS A VARIABLE WIDTH RIGHT-OF-WAY
- 3) BEARINGS REFERENCED TO THE NORTH LINE OF CONTINENTAL EXECUTIVE PARKE PHASE II HAVING A RECORDED BEARING OF N 90°00'00" E.
- 4) UTILITY DATA AS SHOWN IS PER OBSERVABLE EVIDENCE.

SYMBOLS

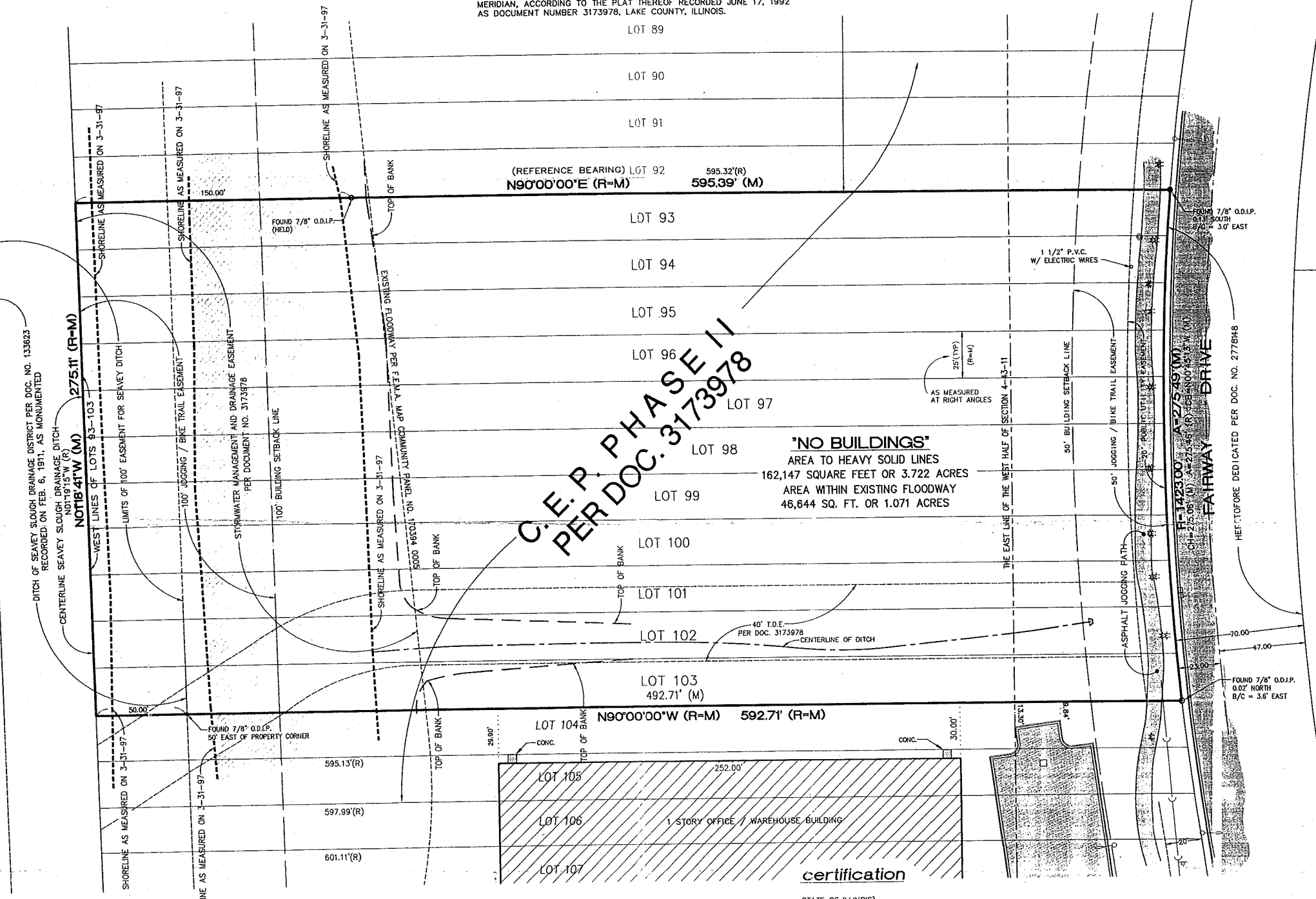
- SET IRON STAKE
- FOUND IRON STAKE
- SET CONCRETE MONUMENT
- FOUND CONCRETE MONUMENT
- CROSS IN CONCRETE
- INLET
- MANHOLE
- STORM MANHOLE
- SANITARY MANHOLE
- VALVE VAULT
- FIRE HYDRANT
- FLARED END SECTION
- WOOD POLE
- OVERHEAD TRAFFIC SIGNAL
- TRAFFIC SIGNAL MANHOLE
- OVERHEAD ELECTRIC
- TRANSFORMER PAD
- ILLINOIS BELL TELEPHONE PEDESTAL
- ILLINOIS BELL TELEPHONE MANHOLE
- CABLE TELEVISION PEDESTAL
- COMMONWEALTH EDISON MANHOLE
- B-BOX
- CONCRETE MONUMENT
- LIGHT
- SIGN
- BOLLARD POLE
- ELECTRIC MARK

- ▨ BITUMINOUS PAVEMENT
- ▨ CONCRETE
- ▨ GRAVEL
- ▨ WATER

ABBREVIATION LEGEND

- N NORTH
- E EAST
- S SOUTH
- W WEST
- J.B. & T.E. JOGGING/BIKE TRAIL EASEMENT
- P.U.E. PUBLIC UTILITY EASEMENT
- B.L. BUILDING LINE
- MEAS. MEASURED
- REC. RECORD
- DOC. DOCUMENT
- NO. NUMBER
- O.D. OUTSIDE DIAMETER
- C.E.P. CONTINENTAL EXECUTIVE PARKE

DEERPATH UNIT NO. 2 PER DOCUMENT NO. 1660327



A PORTION OF THE PROPERTY AS SHOWN, FALLS IN A FLOOD PLAIN AS DEFINED BY FEMA (FEDERAL EMERGENCY MANAGEMENT AGENCY)

certification

STATE OF ILLINOIS
 COUNTY OF DUPAGE) SS
 TO: PACIFIC REALTY ASSOCIATES, L.P.
 TO: CHICAGO TITLE INSURANCE COMPANY
 TO: CONTINENTAL EXECUTIVE PARKE, L.L.C., AN ILLINOIS LIMITED LIABILITY COMPANY
 TO: 199 PARTNERSHIP, AN ILLINOIS GENERAL PARTNERSHIP

THIS IS TO CERTIFY THAT THIS MAP OR PLAT AND THE SURVEY ON WHICH IT IS BASED WERE MADE:
 (i) IN ACCORDANCE WITH "MINIMUM STANDARD DETAIL REQUIREMENTS FOR ALTA/ACSM LAND TITLE SURVEYS," JOINTLY ESTABLISHED AND ADOPTED BY ALTA, ACSM AND NSPS IN 1997, AND INCLUDES ITEMS 1, 2, 4, 6, 7(A), 8, 11 AND 13 OF TABLE A THEREOF; AND,
 (ii) PURSUANT TO THE ACCURACY STANDARDS (AS ADOPTED BY ALTA AND ACSM AND IN EFFECT ON THE DATE OF THIS CERTIFICATION) OF AN URBAN SURVEY AND;
 (iii) IN RELIANCE UPON THE LEGAL DESCRIPTION AND EASEMENTS OF RECORD AS IDENTIFIED IN A TITLE COMMITMENT
 ISSUED BY CHICAGO TITLE INSURANCE COMPANY,
 POLICY NUMBER 140900603803 LK, AND
 HAVING AN EFFECTIVE DATE OF NOVEMBER 26, 1997.



(SIGNED) MICHAEL E. FILIPINSKI
 PROFESSIONAL SURVEYOR
 NUMBER 2666
 (SEAL)
 DATE: Jan 2, 1998

LAND TITLE SURVEY
 FOR
 LOTS 93-103
 CONTINENTAL EXECUTIVE PARKE PHASE II
 VERNON HILLS, ILLINOIS

REVISIONS	DATE	BY

Prepared By: **COMPASS**
 Land Surveying and Mapping
 1600 Shore Road, Suite E, Naperville, IL 60563
 630/961-9880 FAX: 630/961-5071

JOB NO.	DATE	SCALE	SHEET	OF	DRAWN:	IT'S	BOOK	PAGES	PARTY CHIEF:	CHECKED BY:
6201.33	10-19-98	1" = 30'	1	1			62/63		SK	