

**BERKSHIRE
HATHAWAY**
HOMESERVICES

UTAH
PROPERTIES

COMMERCIAL DIVISION

SALE

**MIRROR LAKE
BUSINESS PARK PROJECT**

***West 200 N
Kamas City, Utah 84036***

Approved Flex Commercial Business Park development parcel with 60,000 sq ft in 6 buildings. Each building can be divided into 5 separate 2,000 square foot condominium style spaces. Located in the growing gateway to the Uinta Mountains, Kamas is the ideal location for moving your business or starting a new one. Call for a full package including Plat and Approval documents.

PURCHASE PRICE:
\$6,200,000.00

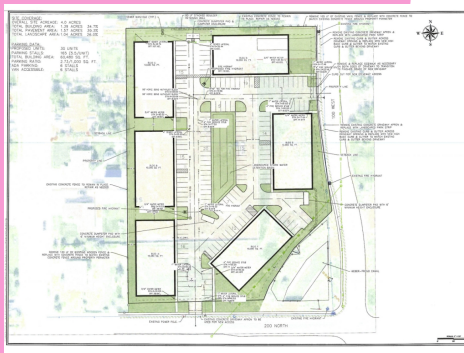
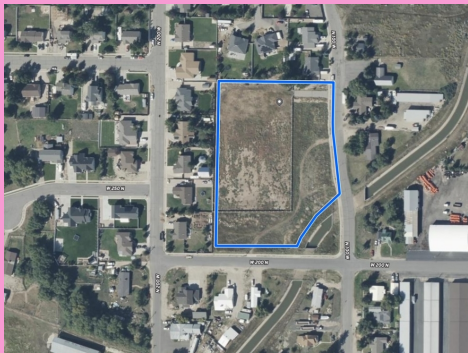
***Land Size: 4.00 Acres
Property Size: 60,000 Sq. Ft.
Year Built: 2026***

Contact:

4359013600

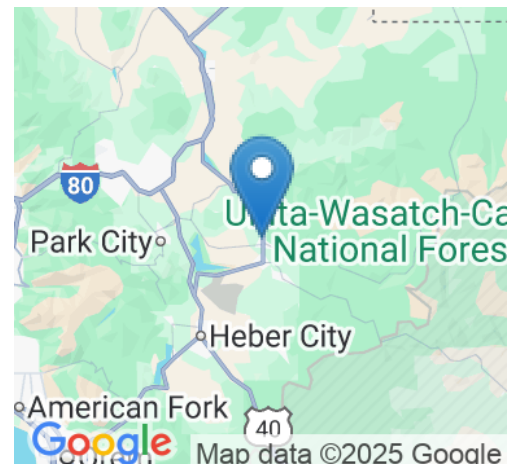
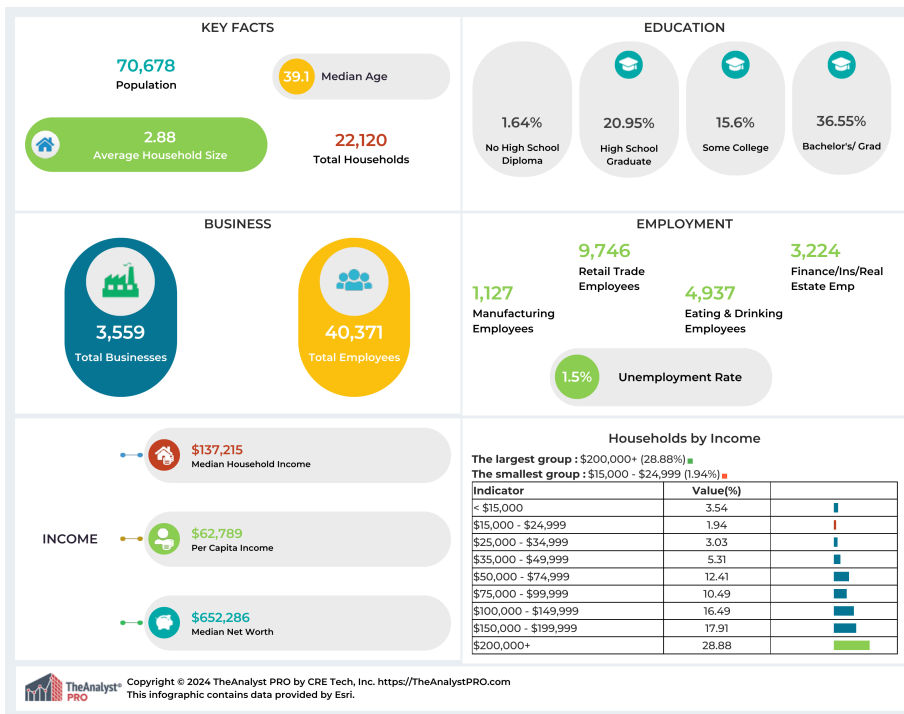
WILLIAM COLEMAN

License: 5450488-AB00
bill@billcoleman.com



BERKSHIRE HATHAWAY | UTAH HOMESERVICES PROPERTIES

COMMERCIAL DIVISION



This information has been obtained from sources believed reliable. We have not verified it and make no guarantee, warranty or representation about it. Any projections, opinions, assumptions or estimates used are for example only and do not represent the current or future performance of the property. You and your advisors should conduct a careful, independent investigation of the property to determine to your satisfaction the suitability of the property for your needs. Photos herein are the property of their respective owners and use of these images without the express written consent of the owner is prohibited.

Contact:

4359013600

WILLIAM COLEMAN

License: 5450488-AB00

bill@billcoleman.com