

FOR LEASE

746 E 17TH STREET
LOS ANGELES, CA 90021

±7,500 SF

INDUSTRIAL BUILDING
CLOSE TO DTLA
FASHION DISTRICT



For more information, please contact:

Daniel Park

(213) 446-0396

Danielpark777@hotmail.com

DRE# 01227056



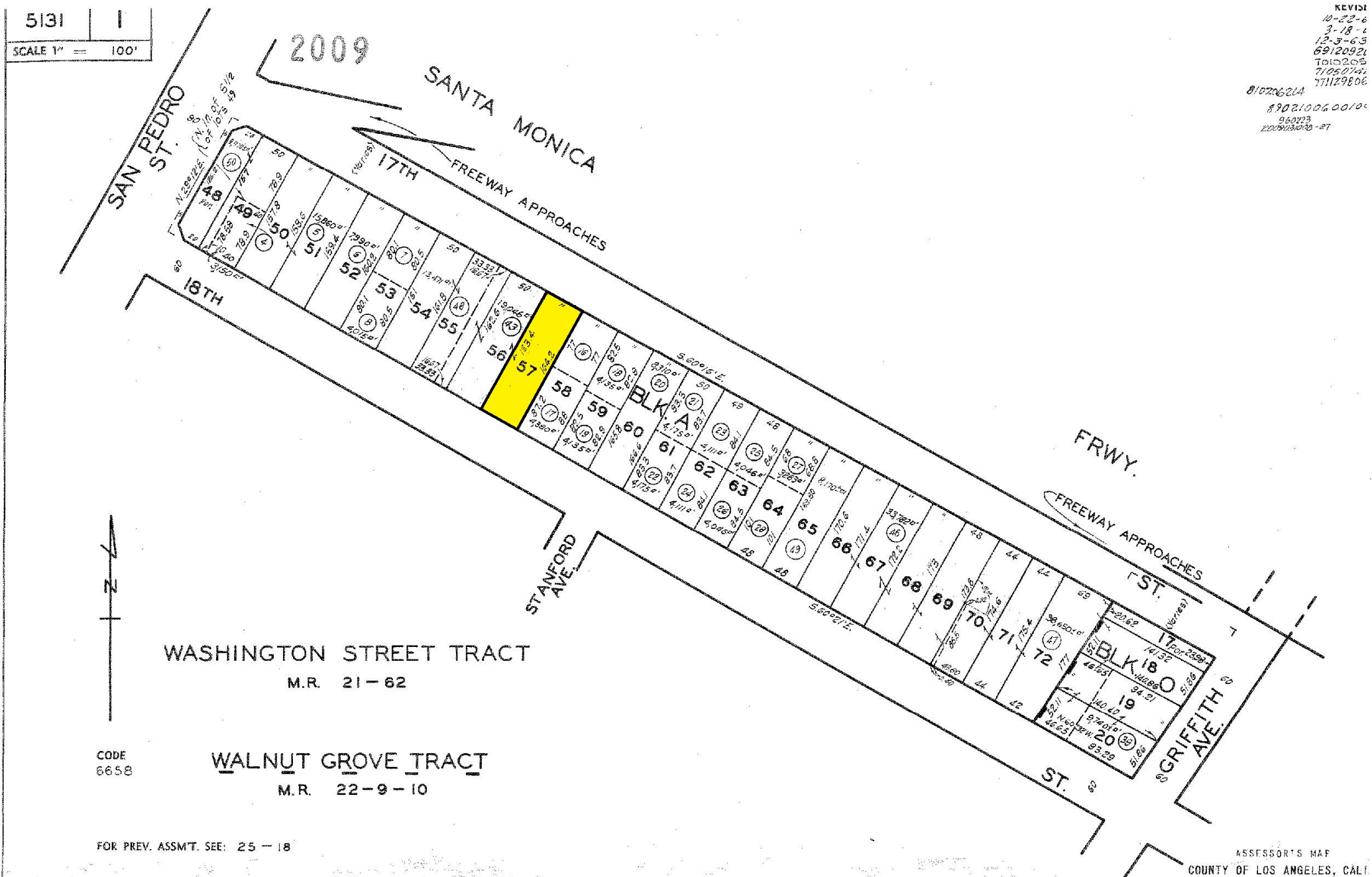
Park Industrial Realty
800 McGarry St, 5th Floor
Los Angeles, CA 90021
Corporation DRE# 01983713

Building SF:	7,500 SF	• Industrial building close to Downtown LA Fashion District
Office SF:	1,214 SF	• 12' minimum clear height
Year Built:	1937	• Beautiful wood bow truss ceiling
Clear Height:	12'	• Clear span warehouse without any column or any post
# Parking:	5	• Nice clean offices
Loading:	2 GL	• Immediate access to 10 freeway on/off ramps
Power:	200 A, 240 V, 3 Ph	• 2 street frontage (17 th St & 18 th St)
# Restrooms:	2	
Zoning:	M2	
Lease Rate:	\$7,000 (\$0.93/SF) Gross	

All information has been furnished from sources which we deem reliable, but for which we assume no liability. All measurements are approximate. Broker/Owner do not warrant its accuracy. Buyer/Lessee must verify all information.

5131
SCALE 1" = 100'

REVISI
10-22-8
3-18-1
12-3-65
69120921
T010205
71050744
771129806
010206214
890210060010
960273
2201003028-87



WASHINGTON STREET TRACT
M.R. 21-62

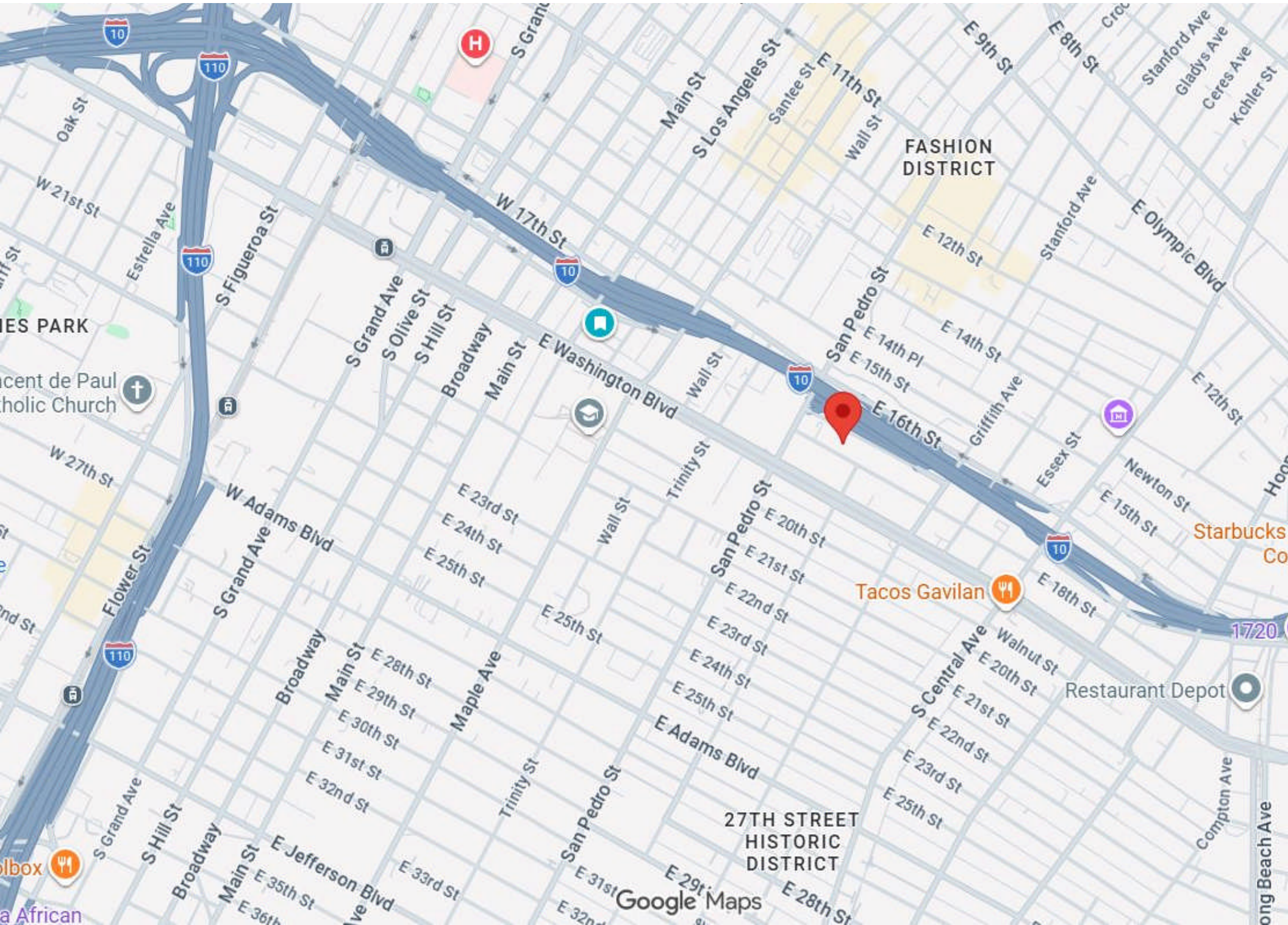
WALNUT GROVE TRACT
M.R. 22-9-10

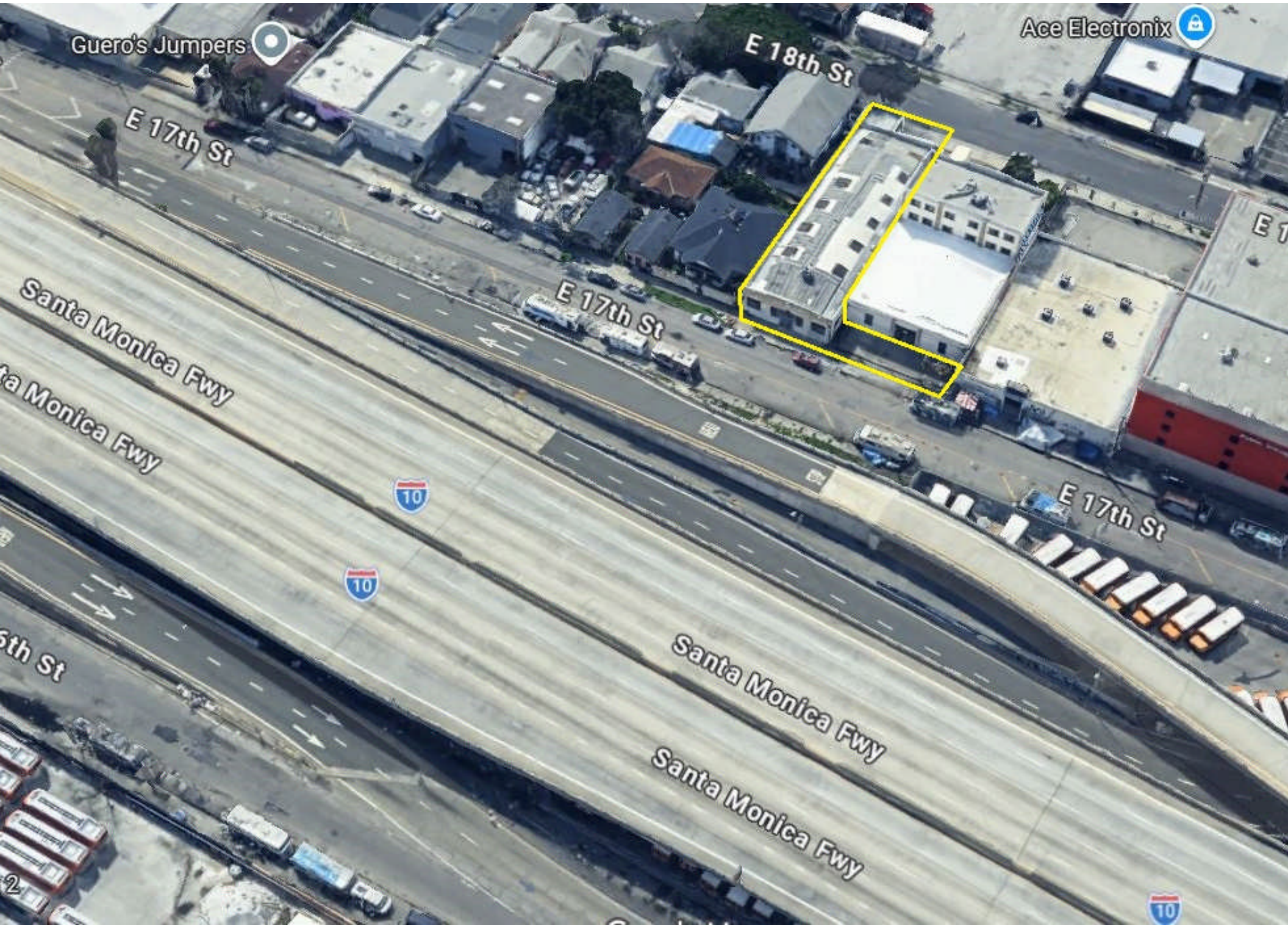
CODE
6658

FOR PREV. ASSMT. SEE: 25-18

FOR LEASE | ±7,500 SF INDUSTRIAL BUILDING

746 E 17TH ST





FOR LEASE | ±7,500 SF INDUSTRIAL BUILDING

746 E 17TH ST



FOR LEASE | ±7,500 SF INDUSTRIAL BUILDING

746 E 17TH ST



JULIO'S EXPORT & IMPORT INC.
TEL: 213 745-6581 FAX: 213 745-4866

746