

# LONE PEAK CENTER 5



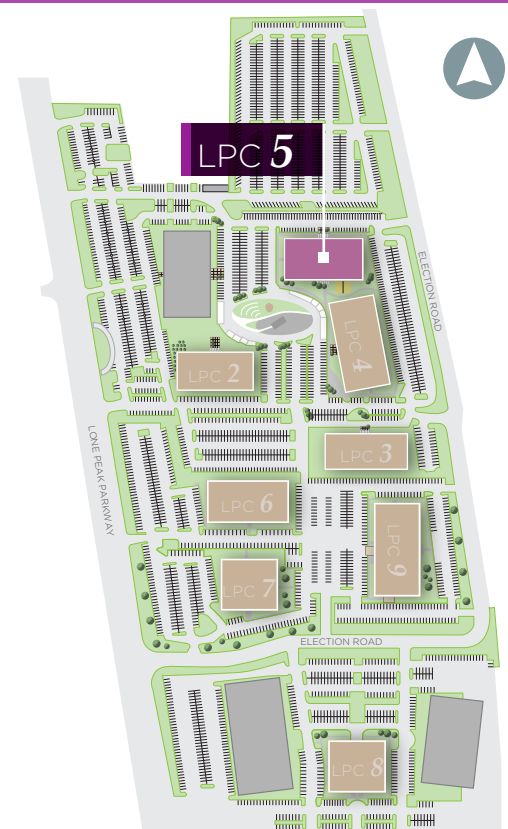
11734 SOUTH ELECTION ROAD | SALT LAKE CITY, UTAH

## BUILDING FEATURES

- 51,820 RSF
- Adjacent to Volleyball and Central Park (“the Loop”) amenity
- Full Building Opportunity
- Great freeway visibility

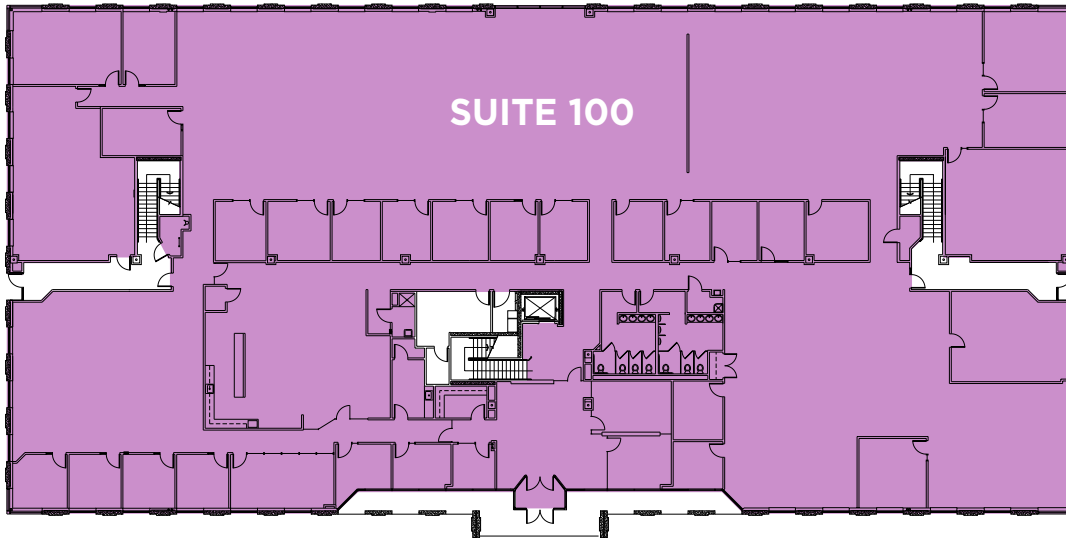


MAIER SIEBEL BABER



# LONE PEAK CENTER 5

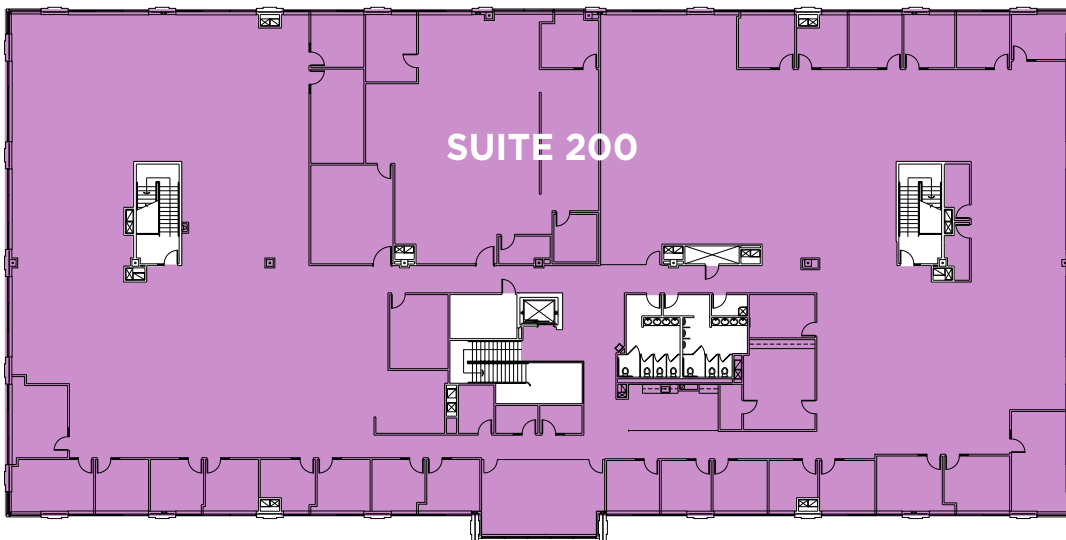
## FIRST FLOOR



SUITE 100: 25,909 RSF



## SECOND FLOOR



SUITE 200: 25,910 RSF



FOR LEASING INFORMATION, PLEASE CONTACT:

**DANA BAIRD, CCIM**  
Executive Managing Director  
(801) 303 5526  
dana.baird@cushwake.com

**MIKE RICHMOND**  
Executive Managing Director  
(801) 303 5434  
mike.richmond@cushwake.com

 **CUSHMAN &  
WAKEFIELD**  
MAIER SIEBEL BABER