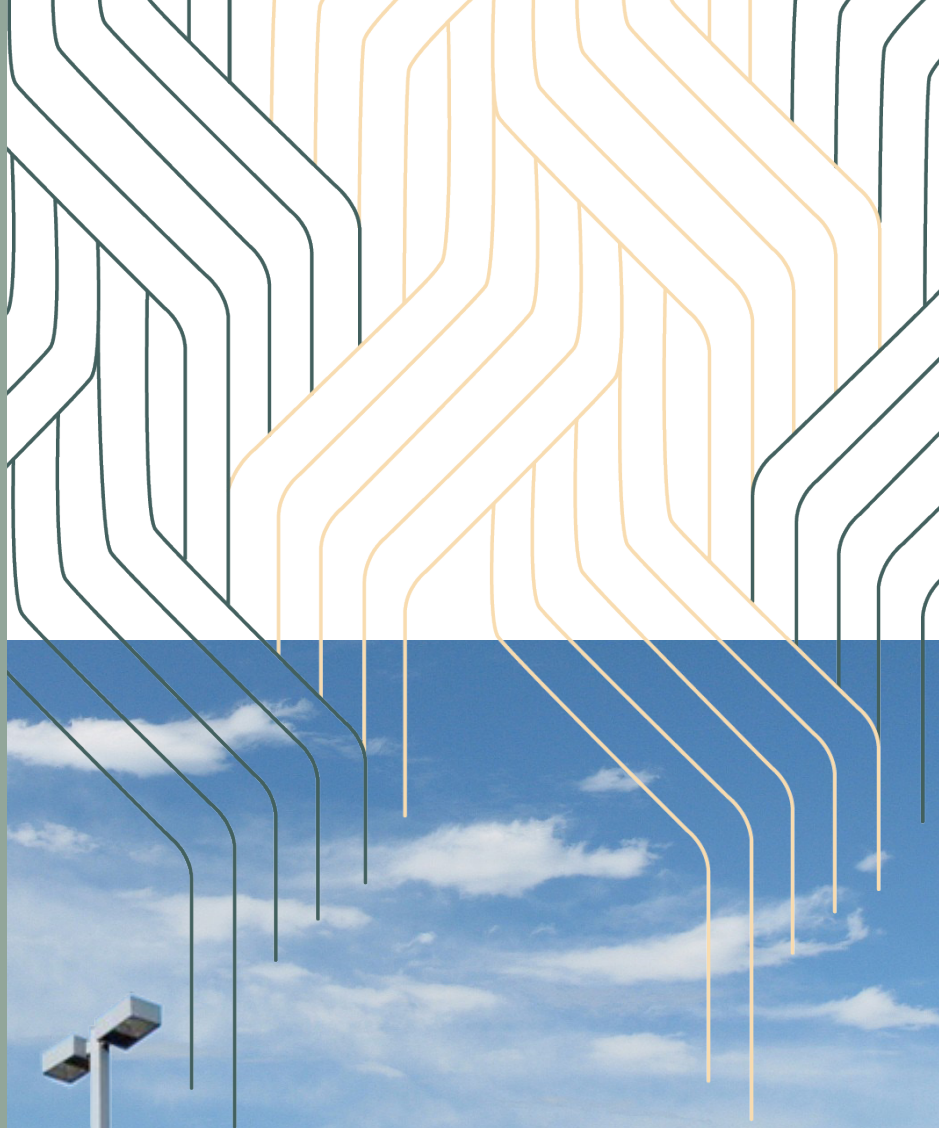


2000

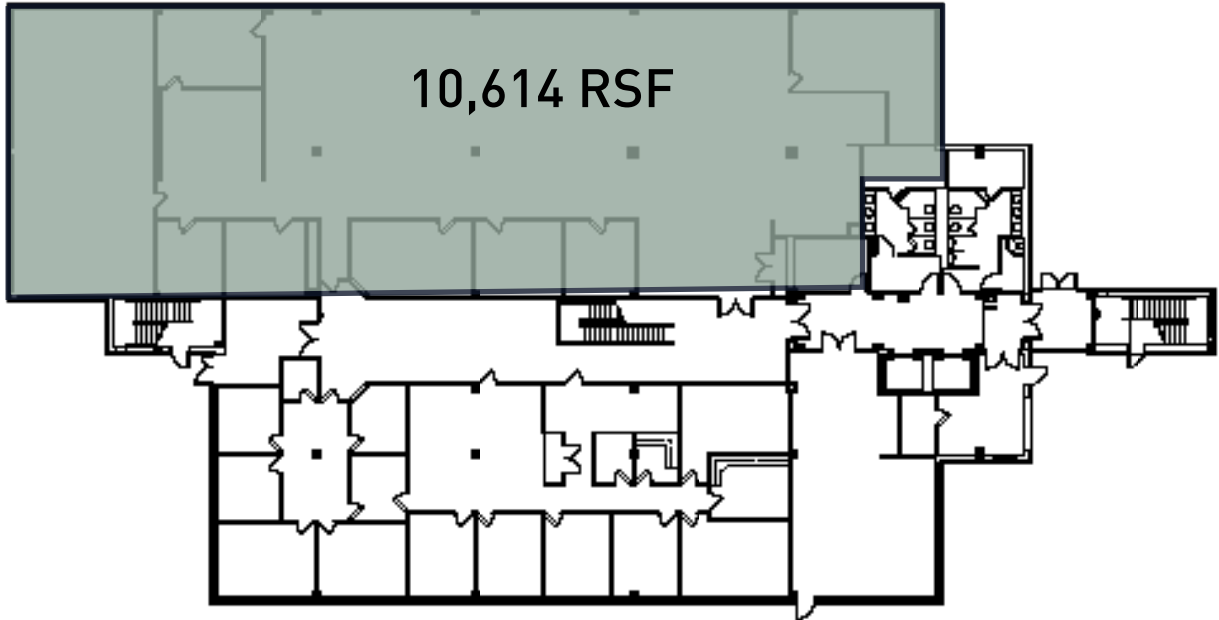
TECHNOLOGY DRIVE

PITTSBURGH, PA
15219



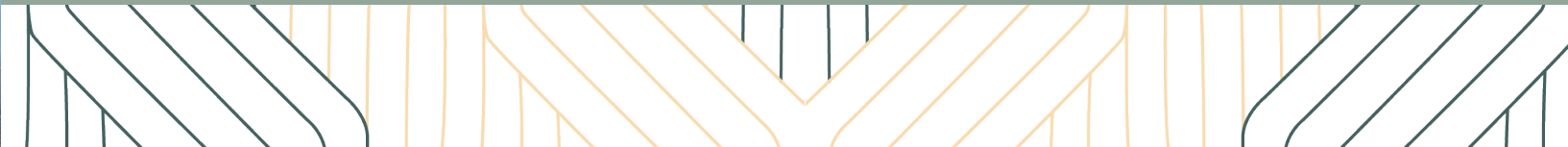
CBRE

FREE PARKING IN THE CITY
EXCESSIVE PARKING RATIO



BUILDING INFORMATION

- ◆ Large parking field provides FREE parking to tenants
- ◆ AVAILABLE IMMEDIATELY
- ◆ 10,614 RSF of 2nd generation, open plan office space
- ◆ Located in the Oakland Technology Sector in the Pittsburgh Technology Center, a 48 acre office and research park
- ◆ Easy access to the University Sector (University of Pittsburgh and CMU) via Bates Street, and the Oakland Shuttle service
- ◆ Latest renovations include more parking spaces, as well as a new outdoor patio area for tenants facing the river with views of the Southside Works
- ◆ Quiet and serene campus like setting
- ◆ Hotel Indigo Pittsburgh located within the Technology Center, recently opened with Eliza, an American Bistro as its feature restaurant
- ◆ Professional and local ownership and management





FREE PARKING AVAILABLE



FOR MORE INFORMATION, PLEASE CONTACT:

Jeremy Z. Kronman, CCIM, SIOR
Vice Chairman
+1 412 394 9848
jeremy.kronman@cbre.com

Adam P. Viccaro
First Vice President
+1 412 471 3285
adam.viccaro@cbre.com

Alex Ruck
Vice President
+1 412 918 5635
alex.ruck@cbre.com

CLICK TO VIEW THE PROPERTY VIDEO

[PROPERTY TOUR](#)

© 2022 CBRE, Inc. All rights reserved. This information has been obtained from sources believed reliable but has not been verified for accuracy or completeness. CBRE, Inc. makes no guarantee, representation or warranty and accepts no responsibility or liability as to the accuracy, completeness, or reliability of the information contained herein. You should conduct a careful, independent investigation of the property and verify all information. Any reliance on this information is solely at your own risk. CBRE and the CBRE logo are service marks of CBRE, Inc. All other marks displayed on this document are the property of their respective owners, and the use of such marks does not imply any affiliation with or endorsement of CBRE. Photos herein are the property of their respective owners. Use of these images without the express written consent of the owner is prohibited.

CBRE