

FORMER TIM HORTON'S

2635 Orchard Lake Road / Sylvan Lake, MI



MID-AMERICA®
Real Estate-Michigan, Inc.

FOR LEASE



RETAIL OPPORTUNITY

FORMER TIM HORTON'S



Address

2635 Orchard Lake Road
Sylvan Lake, MI 48320

Availability

1,963 SF

Features

Former Tim Horton's with a drive-thru available for lease in Sylvan Lake, MI. The property features excellent façade and monument signage along Orchard Lake Road, creating premium visibility. There are 22 parking spaces available and the property is situated near a traffic light. Constructed in 2010, the building is in excellent condition. Zoned C1 – Neighborhood commercial.

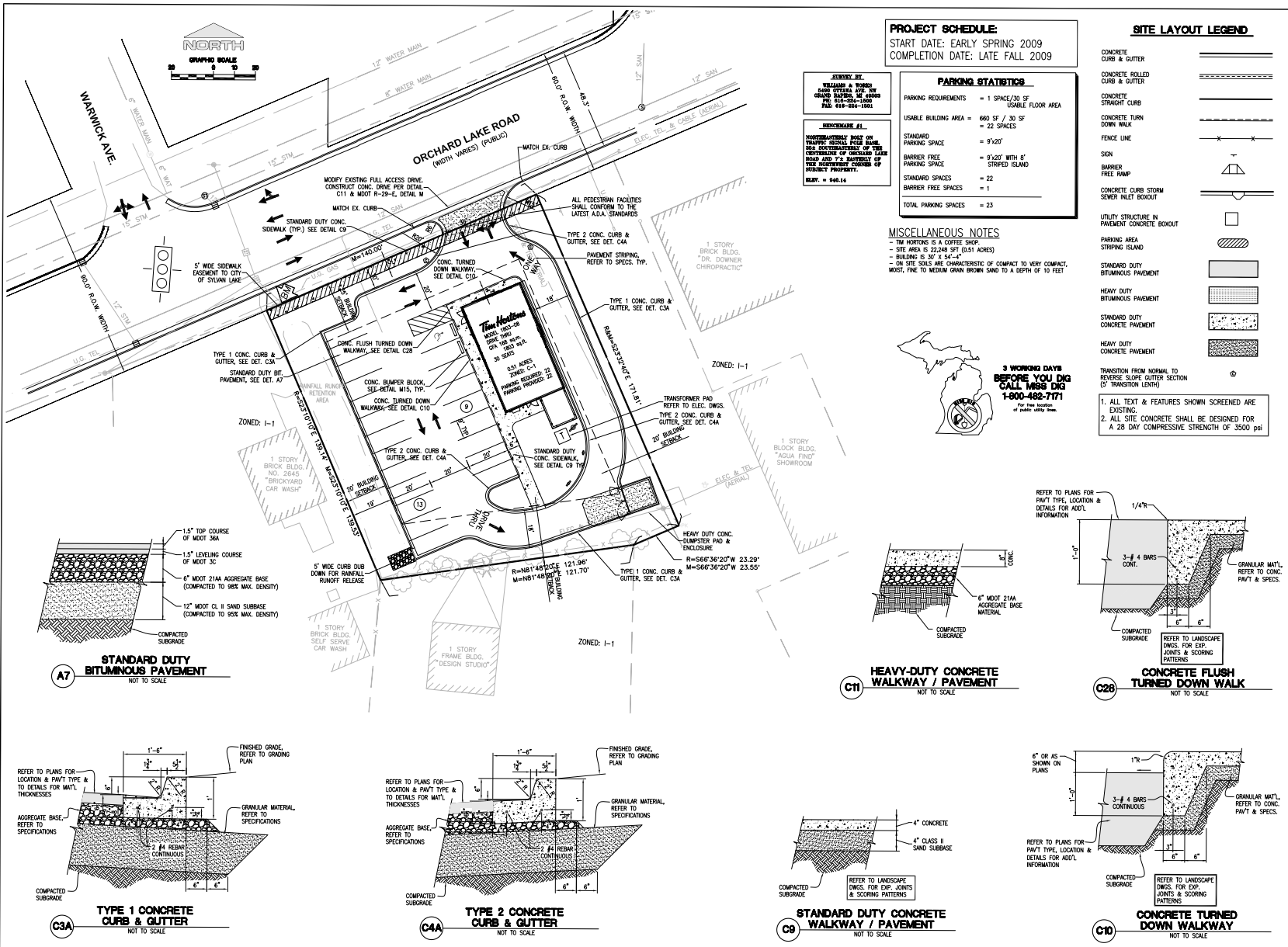
Area Tenants



Demographics (2022)

	1 MILE	3 MILES	5 MILES
POPULATION	6,911	54,473	162,665
HOUSEHOLDS	2,253	22,815	65,895
AVG HOUSEHOLD INCOME	\$118,421	\$121,762	\$121,191
DAYTIME POPULATION	6,160	50,017	159,496

FORMER TIM HORTON'S



PROJECT
Tim Hortons

MODEL: 1803-08

STORE NUMBER:
 SEC ORCHARD LAKE RD & WARWICK ST
 SYLVAN LAKE, MICHIGAN

DEAL TYPE

DEVELOPER

VELMEIR COMPANIES
 Partners In Development
 WEST BLOOMFIELD, MI
 3700 SHELTON DR. SE
 (248) 881-0000

ARCHITECT

ENGINEER

URS
 GRAND RAPIDS, MI
 2900 SHELTON DR. SE
 (616) 874-8800

REVISIONS/SUBMITTALS:

ROAD COMMISSION	11/04/2000
REM. PARKING STALL	03/27/2000

DRAWING BY:

DATE: 11/03/2000

JOB NUMBER: 1294151

TITLE: SITE LAYOUT PLAN

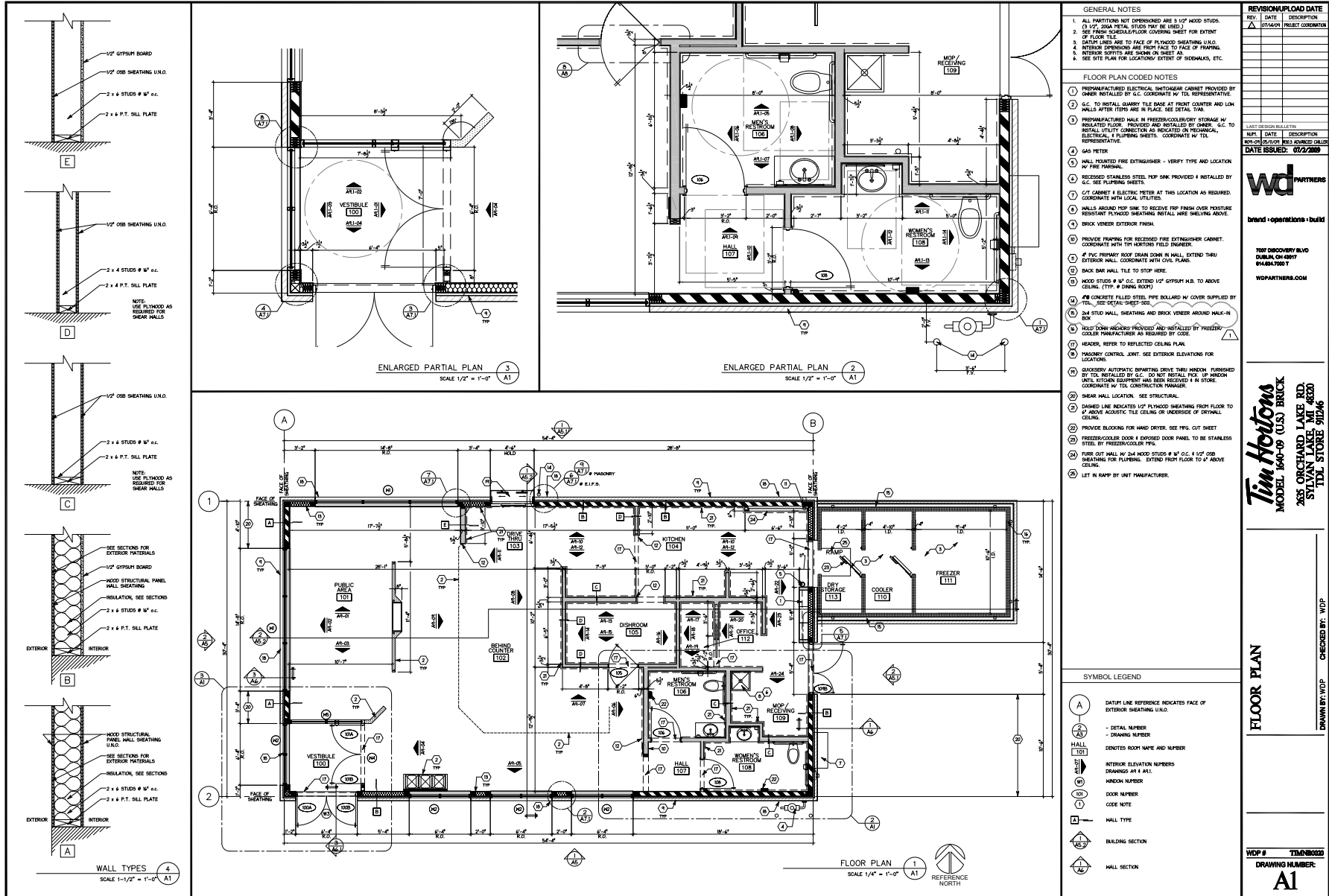
SHEET NUMBER: C1.1

COMMENTS:
 NOT RELEASED FOR CONSTRUCTION

SITE PLAN

Copyright © 2008 URS Corporation. All Rights Reserved

FORMER TIM HORTON'S



FLOOR PLAN

FORMER TIM HORTON'S



FORMER TIM HORTON'S



Eric
Unatin

Mid-America Real Estate -
Michigan, Inc.
T: 248.855.6800
EUnatin@MidAmericaGrp.com

Eric
Birnholtz

Mid-America Real Estate -
Michigan, Inc.
T: 248.855.6800
EBirnholtz@MidAmericaGrp.com



38500 Woodward Ave, Suite 100
Bloomfield Hills, Michigan 48304
248.855.6800
MidAmericaGrp.com

CONTACT