

# SHOPPES ON MAINE

Retail Space for Lease



4611 - 4662 Maine Ave SE, Rochester, MN 55904



HEMPEL  
REAL ESTATE

# Highlights:

- **Space Available: 1,500 SF to 30,886 SF**
- **Shoppes on Maine is a five-building, multi-tenant retail center and is shadow-anchored by Super Target, Lowes and Marcus Theater.**
- **Conveniently located at the interchange of 48th Street and County Rd 117 on HWY 63.**
- **Located just 10 minutes south of downtown Rochester and the Mayo Clinic.**
- **Minutes away from Rochester International Airport.**
- **100 mile trade area drawing from as far south as Northern Iowa and as far east as Western Wisconsin.**



[leasing@hempelcompanies.com](mailto:leasing@hempelcompanies.com)

SHOPPES ON MAINE SHOPPING CENTER  
4611 - 4662 MAINE AVE SE, ROCHESTER, MN 55904

BRENT JACOBSON  
BEN KRISNAK

612.355.2609  
612.355.2608

  
HEMPEL  
REAL ESTATE

## Property Info:

- **Location:** Hwy 63 & SE 48th St. Rochester, MN
- **Space Available:** 1,500 SF to 50,000 SF
- **Lease Rate:** Negotiable

## Demographics - 15 Mile Radius:



**171,860**  
Population



**68,241**  
Number of Households



**\$105,101**  
Average Household  
Income



**181,278**  
Daytime  
Population



**\$1.8 Billion**  
Retail Goods Spending



**\$601 Billion**  
2022 Annual Budget  
Expenditures

[leasing@hempelcompanies.com](mailto:leasing@hempelcompanies.com)





[leasing@hempelcompanies.com](mailto:leasing@hempelcompanies.com)

SHOPPES ON MAINE SHOPPING CENTER  
4611 - 4662 MAINE AVE SE, ROCHESTER, MN 55904

BRENT JACOBSON  
BEN KRŠNAK

612.355.2609  
612.355.2608







Demos	1 Mile	3 Miles	5 Miles
Population	9,040	54,399	141,218
Avg. House-hold Income	\$140,277	\$104,782	\$104,132

leasing@hempelcompanies.com

SHOPPES ON MAINE SHOPPING CENTER  
4611 - 4662 MAINE AVE SE, ROCHESTER, MN 55904

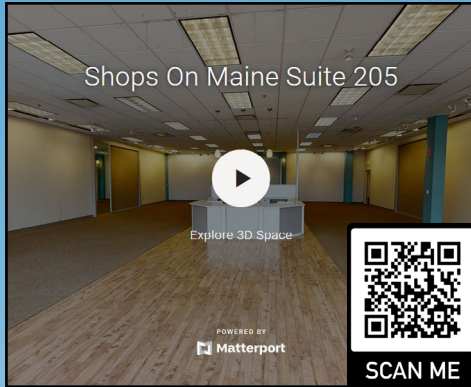
BRENT JACOBSON  
BEN KRSTAK

612.355.2609  
612.355.2608





# Click or Scan for 3D Tours:

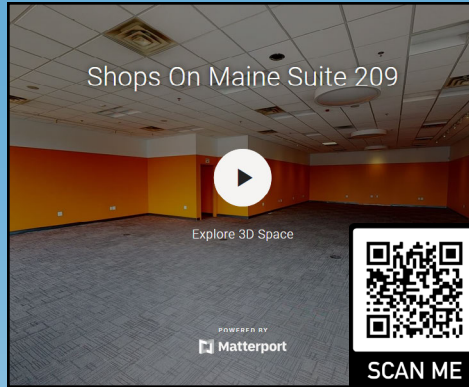


Shops On Maine Suite 205

Explore 3D Space

POWERED BY  
Matterport

SCAN ME

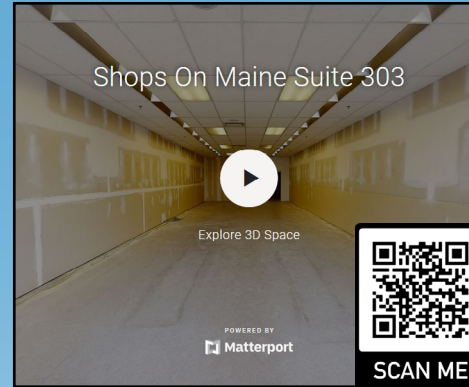
**Suite 205**

Shops On Maine Suite 209

Explore 3D Space

POWERED BY  
Matterport

SCAN ME

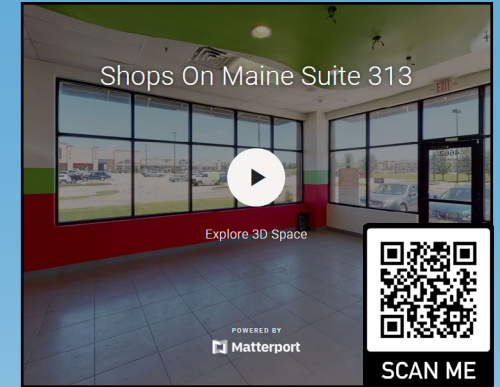
**Suite 209**

Shops On Maine Suite 303

Explore 3D Space

POWERED BY  
Matterport

SCAN ME

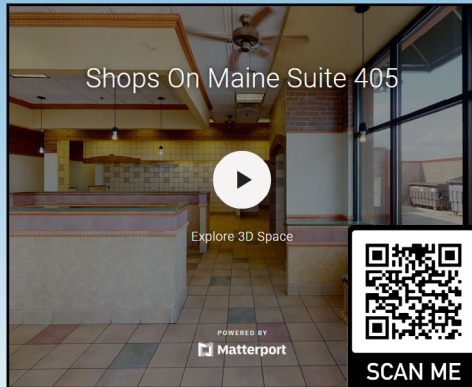
**Suite 303**

Shops On Maine Suite 313

Explore 3D Space

POWERED BY  
Matterport

SCAN ME

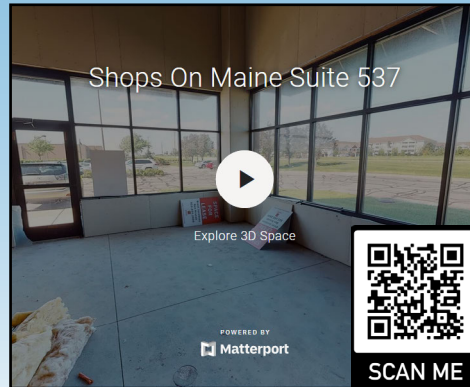
**Suite 313**

Shops On Maine Suite 405

Explore 3D Space

POWERED BY  
Matterport

SCAN ME

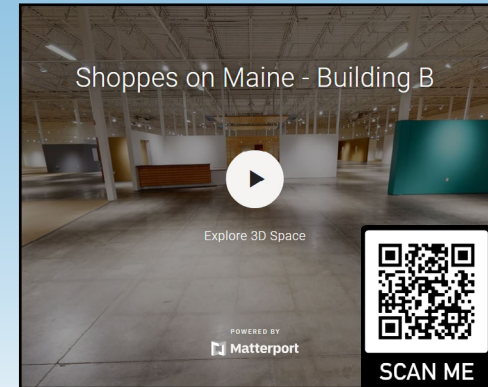
**Suite 405**

Shops On Maine Suite 537

Explore 3D Space

POWERED BY  
Matterport

SCAN ME

**Suite 537**

Shoppes on Maine - Building B

Explore 3D Space

POWERED BY  
Matterport

SCAN ME

**Building B**[leasing@hempelcompanies.com](mailto:leasing@hempelcompanies.com)

SHOPPES ON MAINE SHOPPING CENTER  
4611 - 4662 MAINE AVE SE, ROCHESTER, MN 55904

BRENT JACOBSON  
BEN KRSTAK

612.355.2609  
612.355.2608

  
HEMPEL  
REAL ESTATE

### Outlot 1

**NOODLES & COMPANY** Available 3,600 SF

**COST CUTTERS** Available 2,400 SF

### Building A

**PET SMART**

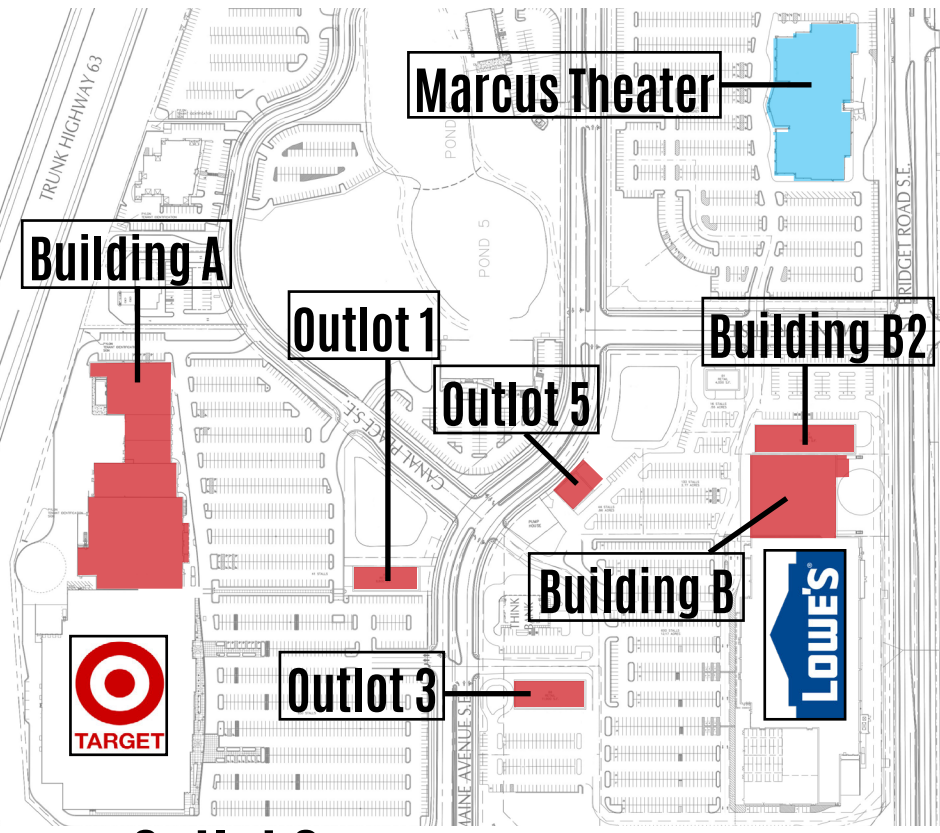
**DOLLAR TREE**

**maurices**

**OLD NAVY**

**ROSS DRESS FOR LESS**

**Burlington**



### Building A

### Outlot 1

### Outlot 5

### Building B2

### Building B

### Outlot 3

### Outlot 3

**Carbon COFFEE** Available - 1,505 SF

**T-Nails** Available - 1,967 SF

**Spectrum** Available - 1,658 SF

### Outlot 5

**ROOSTERS** Bar, & Grill Available 1,825 SF

### Building B2

Available 1,611 SF

**CosmoProf**

**MILAN Laser Hair Removal**

**Sola SALONS**

**APOLLO Liquor**

### Building B

Available 30,886 SF

[Click on vacancy to view a 3D tour.](#)

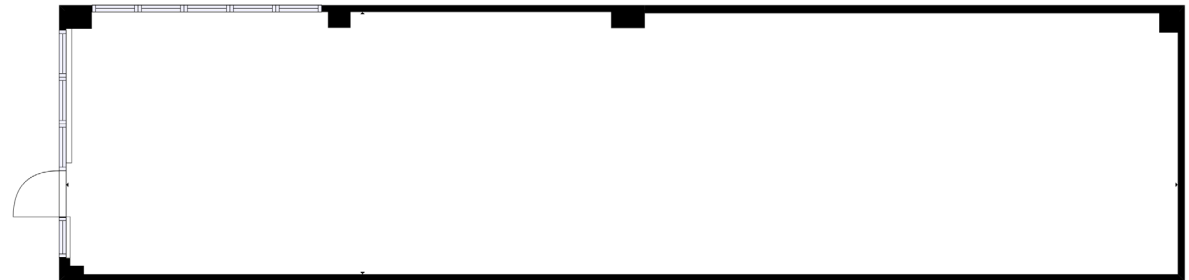
[leasing@hempelcompanies.com](mailto:leasing@hempelcompanies.com)

## Suite 537 - 1,611 SF

4530 Main Ave SE, Rochester, MN

[Click here to view the 3D Tour](#)

## Building B2



[leasing@hempelcompanies.com](mailto:leasing@hempelcompanies.com)

SHOPPES ON MAINE SHOPPING CENTER  
4611 - 4662 MAINE AVE SE, ROCHESTER, MN 55904

BRENT JACOBSON  
BEN KRŠNAK

612.355.2609  
612.355.2608

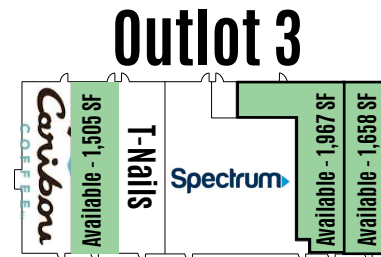
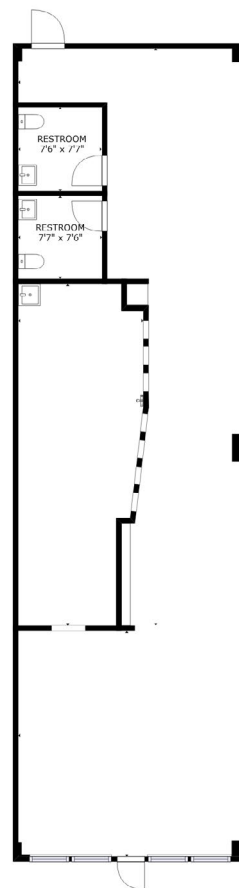




# Suite 313 - 1,658 SF

4662 Maine Ave SE, Rochester, MN

[Click here to view the 3D Tour](#)



[leasing@hempelcompanies.com](mailto:leasing@hempelcompanies.com)

SHOPPES ON MAINE SHOPPING CENTER  
4611 - 4662 MAINE AVE SE, ROCHESTER, MN 55904

BRENT JACOBSON  
BEN KRŠNAK

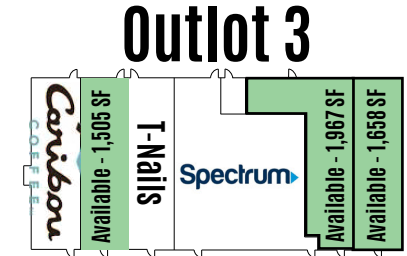
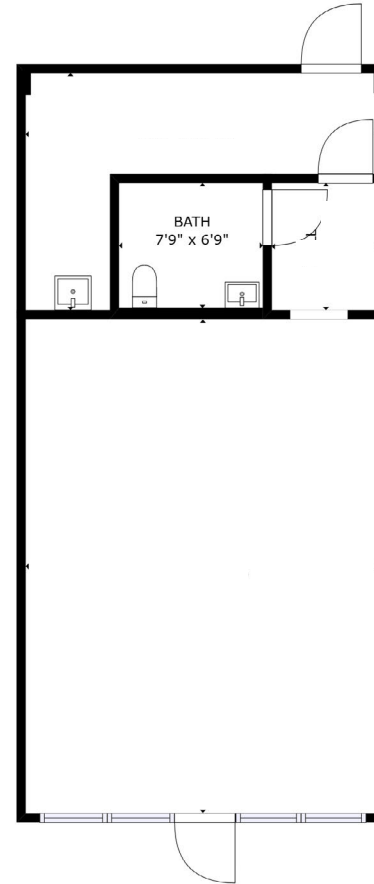
612.355.2609  
612.355.2608



## Suite 303 - 1,505 SF

4662 Maine Ave SE, Rochester, MN

[Click here to view the 3D Tour](#)



[leasing@hempelcompanies.com](mailto:leasing@hempelcompanies.com)

SHOPPES ON MAINE SHOPPING CENTER  
4611 - 4662 MAINE AVE SE, ROCHESTER, MN 55904

BRENT JACOBSON  
BEN KRŠNAK

612.355.2609  
612.355.2608

  
HEMPEL  
REAL ESTATE

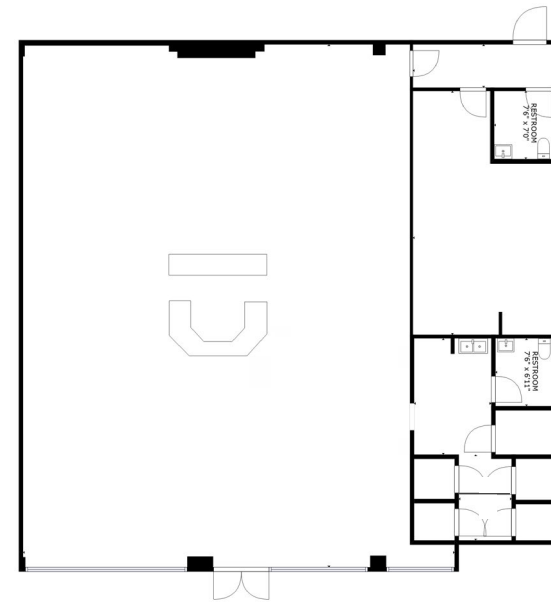


# Suite 205 - 3,600 SF

## 4607 Maine Ave SE, Rochester, MN

[Click here to view the 3D Tour](#)

### Outlot 1



[leasing@hempelcompanies.com](mailto:leasing@hempelcompanies.com)

SHOPPES ON MAINE SHOPPING CENTER  
4611 - 4662 MAINE AVE SE, ROCHESTER, MN 55904

BRENT JACOBSON  
BEN KRŠNAK

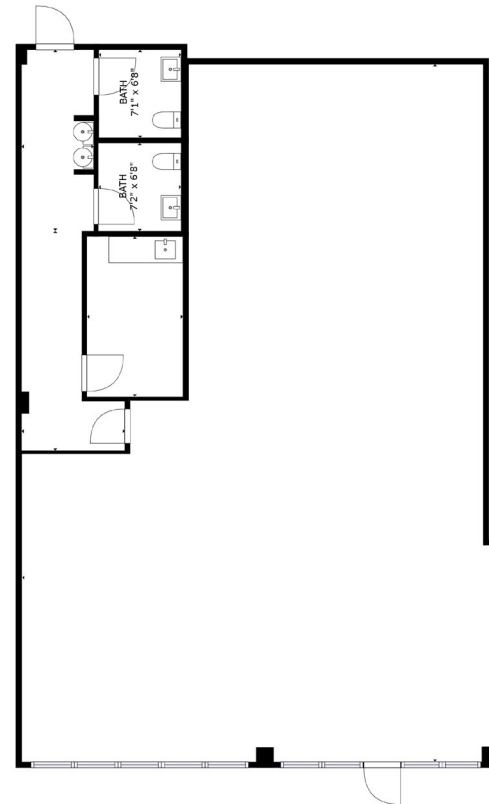
612.355.2609  
612.355.2608



## Suite 209 - 2,400 SF

4607 Maine Ave SE, Rochester, MN

[Click here to view the 3D Tour](#)



### Outlot 1



[leasing@hempelcompanies.com](mailto:leasing@hempelcompanies.com)

SHOPPES ON MAINE SHOPPING CENTER  
4611 - 4662 MAINE AVE SE, ROCHESTER, MN 55904

BRENT JACOBSON  
BEN KRISNAK

612.355.2609  
612.355.2608

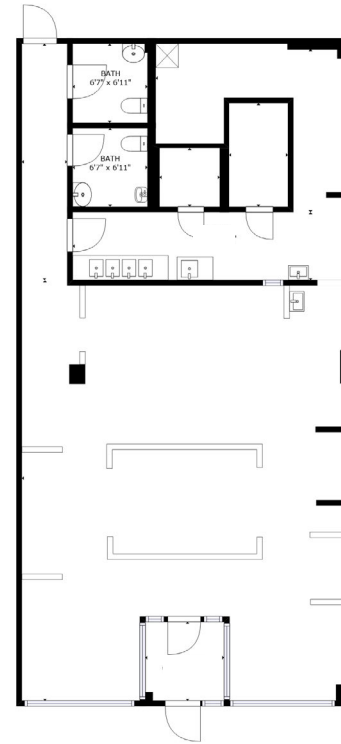




## Suite 405 - 1,825 SF

4576 Maine Ave SE, Rochester, MN

[Click here to view the 3D Tour](#)



## Outlot 5



[leasing@hempelcompanies.com](mailto:leasing@hempelcompanies.com)

SHOPPES ON MAINE SHOPPING CENTER  
4611 - 4662 MAINE AVE SE, ROCHESTER, MN 55904

BRENT JACOBSON  
BEN KRŠNAK

612.355.2609  
612.355.2608

  
HEMPEL  
REAL ESTATE

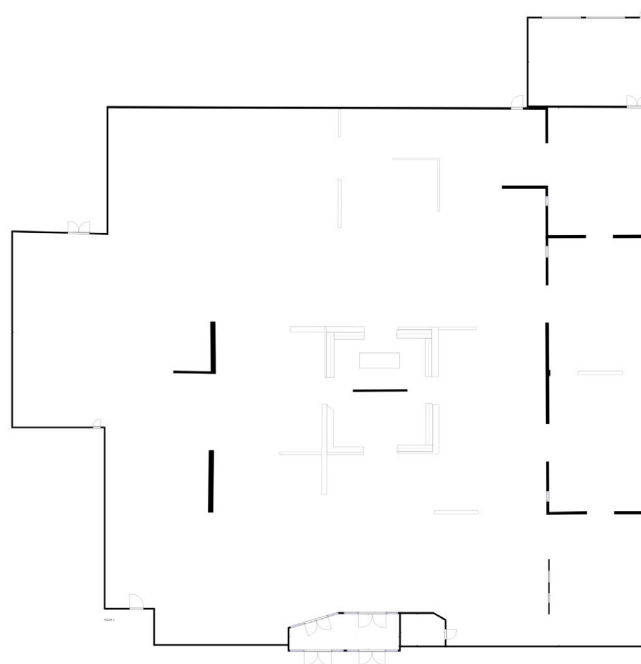
## Building B - 30,886 SF

4540 Maine Ave SE, Rochester, MN

[Click here to view the 3D Tour](#)

### Building B

Available  
30,886 SF



[leasing@hempelcompanies.com](mailto:leasing@hempelcompanies.com)

SHOPPES ON MAINE SHOPPING CENTER  
4611 - 4662 MAINE AVE SE, ROCHESTER, MN 55904

BRENT JACOBSON  
BEN KRŠNAK

612.355.2609  
612.355.2608





MAKING  
LIVES  
BETTER  
BY  
MAKING  
BUILDINGS  
BETTER

