



# Hilltown Commercial Realty

Commercial Real Estate in Northwest Arkansas

## RETAIL SPACE AVAILABLE

**\$20.00/SF/YR**

Signature Plaza, 200 Progress Ave., Siloam Springs AR



### OFFERING SUMMARY

**SPACE:** 1ST FLOOR, STE 90

**SIZE:** 2,781 SF

**TERM:** NEGOTIABLE

**RENTAL RATE:** \$20.00 /SF/Y

**FRONTAGE:** 565' ON PROGRESS AVE

**PARKING:** 360 SPACES

**CITY:** SILOAM SPRINGS, ARKANSAS

**COUNTY:** BENTON

**YEAR BUILT:** 2007

**CENTER TYPE:** NEIGHBORHOOD CENTER

### PROPERTY HIGHLIGHT

This extremely visible retail property offers excellent accessibility with easy pull-up access directly to the front door, making it convenient for clients and customers. Located in a high-traffic area, the space benefits from strong visibility, with heavy foot and vehicle traffic thanks to its proximity to Walmart and other popular businesses nearby. Perfect for offices, retail, or service-based businesses, this space offers great potential for high exposure and steady customer flow. Don't miss out on this fantastic opportunity to establish your business in one of Siloam Springs' busiest commercial hubs!

**DOUG ALLEN**  
SALES AGENT, HILLTOWN COMMERCIAL REALTY

MOBILE: (479) 200-3641  
EMAIL: [doug@hcrnwa.com](mailto:doug@hcrnwa.com)







**Hilltown Commercial Realty**  
Commercial Real Estate in Northwest Arkansas

## **RETAIL SPACE AVAILABLE**

Signature Plaza, 200 Progress Ave., Siloam Springs AR



**DOUG ALLEN**  
SALES AGENT, HILLTOWN COMMERCIAL REALTY

MOBILE: (479) 200-3641  
EMAIL: [doug@hcrnwa.com](mailto:doug@hcrnwa.com)



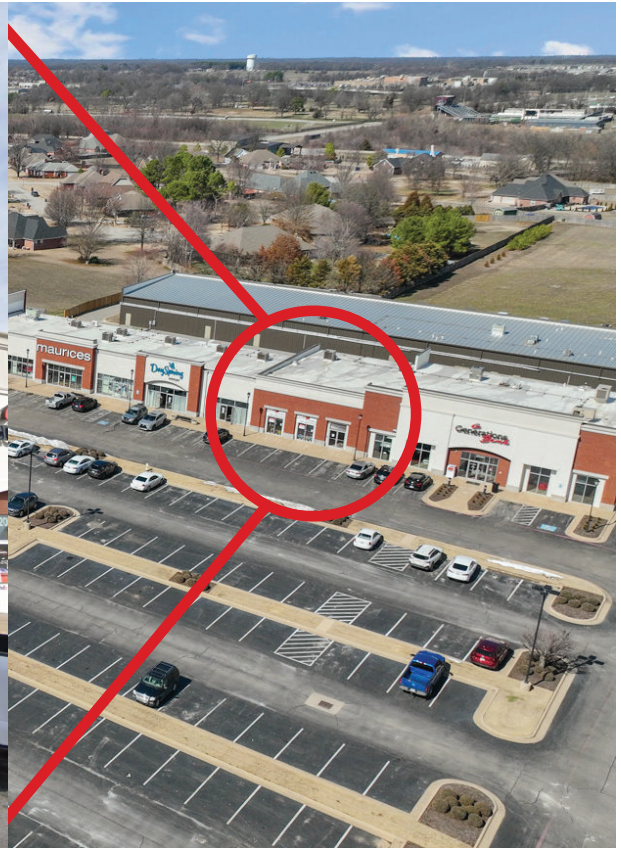




**Hilltown Commercial Realty**  
Commercial Real Estate in Northwest Arkansas

## RETAIL SPACE AVAILABLE

Signature Plaza, 200 Progress Ave., Siloam Springs AR



**DOUG ALLEN**  
SALES AGENT, HILLTOWN COMMERCIAL REALTY

MOBILE: (479) 200-3641  
EMAIL: [doug@hcrnwa.com](mailto:doug@hcrnwa.com)

