

# THE SUMMIT AT DRY CREEK

10303 - 10333 East Dry Creek Road | Englewood , CO



Property owned by St. Paul Fire and Marine Insurance Company  
a wholly owned subsidiary of The Travelers Companies, Inc.





## PROPERTY HIGHLIGHTS

- New fitness center, common conference room and tenant lounge/cafe
- Class A office property ideally located in the Southeast submarket
- Two (2) four-story buildings totaling 223,082 RSF
- Quick access to Interstate 25 off the Dry Creek interchange
- Walking distance to the Dry Creek light rail station
- Attractive glass exteriors and stone throughout
- Executive covered parking / 4.5 : 1,000 parking ratio
- Monument signage
- Energy Star labeled
- Efficient 22,000 SF floor plates infused with natural lighting
- Directly across from the Shops at Vallagio with a mix of retail and residential amenities

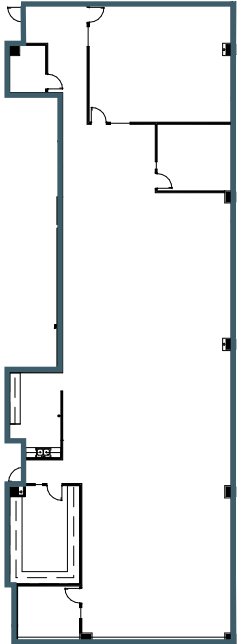


# AVAILABILITIES

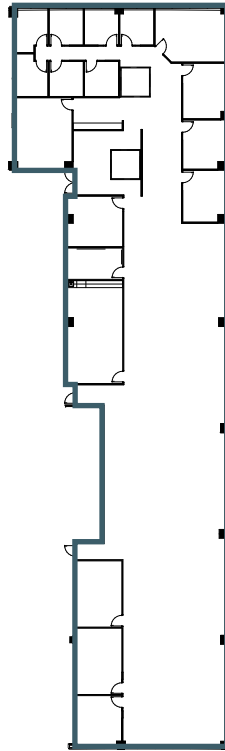
10303 - 10333

E. DRY CREEK ROAD

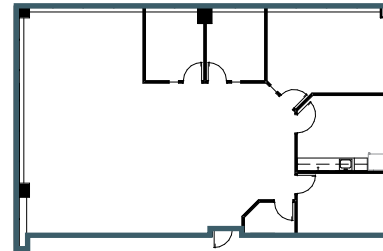
**SUITE 110**  
5,979 RSF  
AVAILABLE NOW!



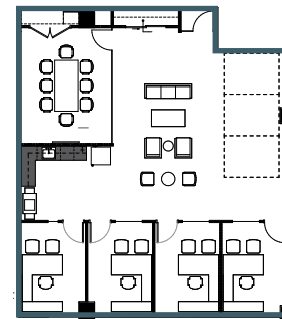
**SUITE 220**  
11,055 RSF  
AVAILABLE NOW!



**SUITE 225**  
2,623 RSF Spec Suite  
AVAILABLE NOW!



**SUITE 105**  
2,044 RSF Spec Suite  
AVAILABLE NOW!



## AVAILABLE SUITES

### SUMMIT I

#### 10333 East Dry Creek Road

Suite 100	14,615 RSF	Suite 250	5,534 RSF
Suite 110	5,979 RSF	Suite 305	1,744 RSF
Suite 170	5,600 RSF	Suite 330	4,509 RSF
Suite 220	11,055 RSF	Suite 375	4,735 RSF

### SUMMIT II

#### 10303 East Dry Creek Road

Suite 105*	2,044 RSF
Suite 200	6,537 RSF
Suite 225*	2,623 RSF

\* Spec Suite Available

**Dan Beer**

303.813.6494

dan.beer@cushwake.com

**Todd Wheeler**

303.813.6441

todd.wheeler@cushwake.com

**Michael Coppola**

303.312.4212

michael.coppola@cushwake.com





**EXCLUSIVE AGENTS**

**TODD WHEELER**  
+1 303 813 6441  
todd.wheeler@cushwake.com

**DAN BEER**  
+1 303 813 6494  
dan.beer@cushwake.com



**MICHAEL COPPOLA**  
+1 303 312 4212  
michael.coppola@cushwake.com

©2024 Cushman & Wakefield. All rights reserved. The information contained in this communication is strictly confidential. This information has been obtained from sources believed to be reliable but has not been verified. NO WARRANTY OR REPRESENTATION, EXPRESS OR IMPLIED, IS MADE AS TO THE CONDITION OF THE PROPERTY (OR PROPERTIES) REFERENCED HEREIN OR AS TO THE ACCURACY OR COMPLETENESS OF THE INFORMATION CONTAINED HEREIN, AND SAME IS SUBMITTED SUBJECT TO ERRORS, OMISSIONS, CHANGE OF PRICE, RENTAL OR OTHER CONDITIONS, WITHDRAWAL WITHOUT NOTICE, AND TO ANY SPECIAL LISTING CONDITIONS IMPOSED BY THE PROPERTY OWNER(S). ANY PROJECTIONS, OPINIONS OR ESTIMATES ARE SUBJECT TO UNCERTAINTY AND DO NOT SIGNIFY CURRENT OR FUTURE PROPERTY PERFORMANCE.