

INDUSTRIAL FOR LEASE

MULTIPLE $\pm 4,000$ SF UNITS AVAILABLE



1851-1955 SCOTT FUTRELL DR, CHARLOTTE, NC 28208

BUSINESS PARK

Interstate West

AVAILABLE UNITS

Suite 1891: $\pm 4,012$ SF total
Suite 1945: $\pm 4,006$ SF total

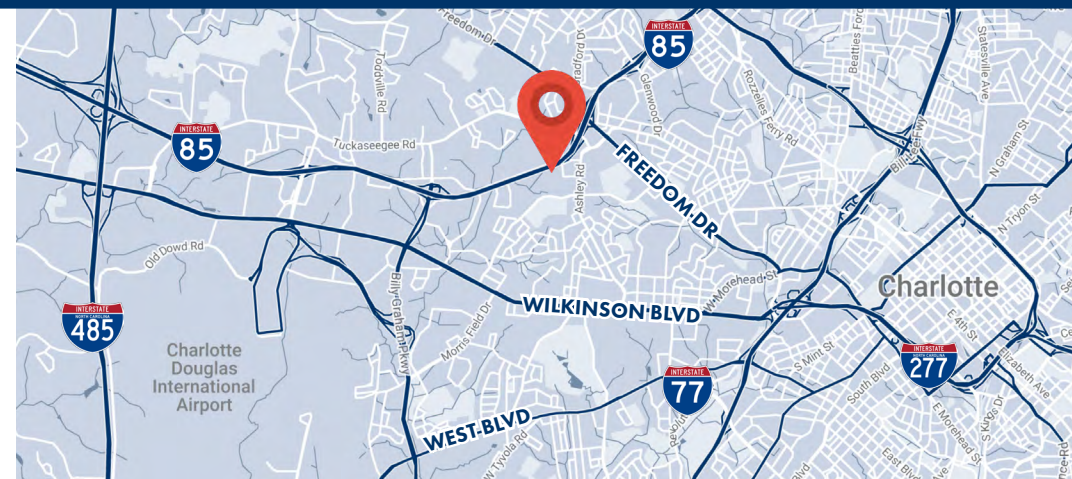
LOCATION

Convenient access to I-85, I-77, & CLT Airport

FOR LEASE: \$11-11.50 PSF NNN

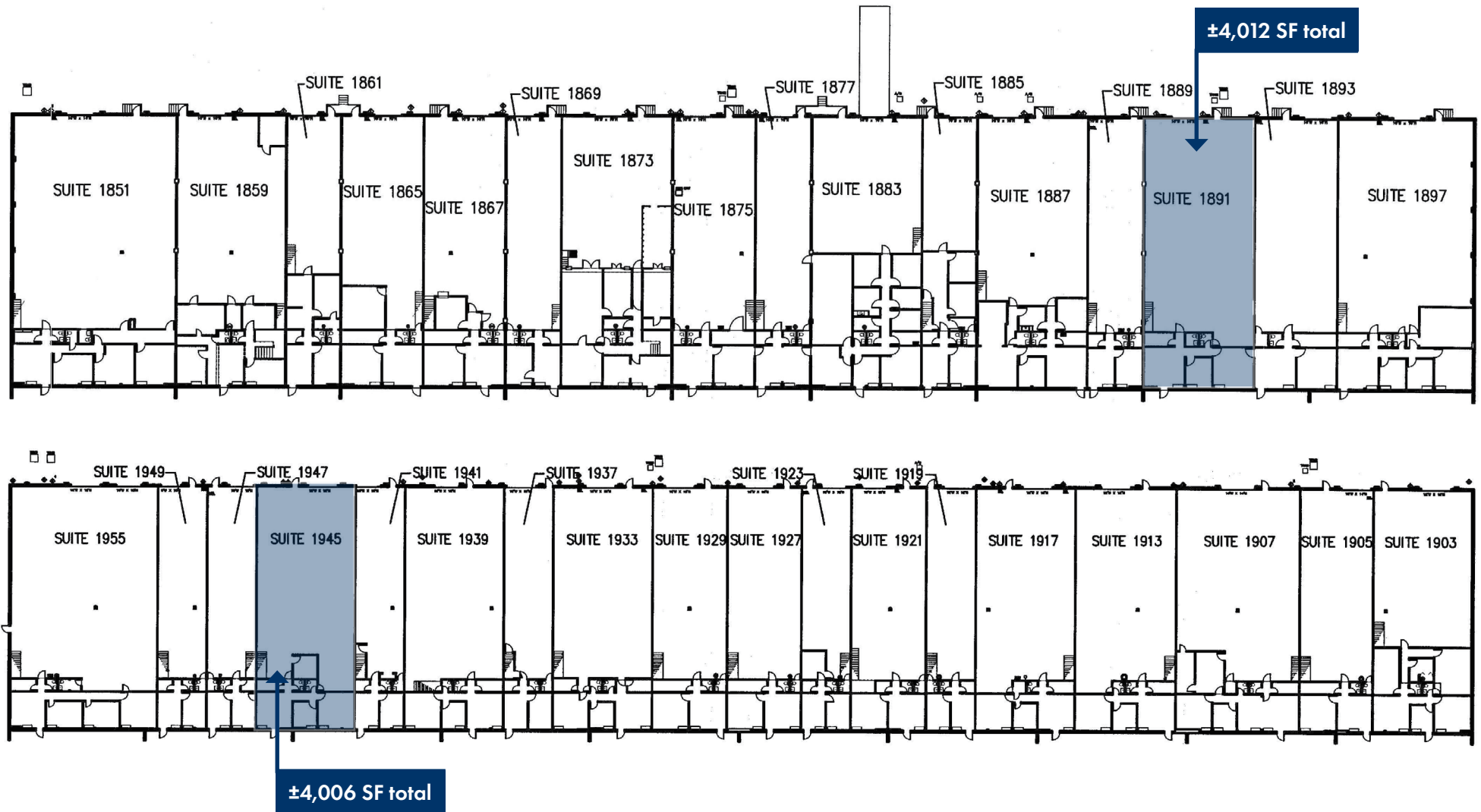
CONTACT BLAKE OSBORN

704.375.1159 | blake@piedmontproperties.com



AVAILABLE UNITS

1851-1955 SCOTT FUTRELL DR | CHARLOTTE, NC 28208



UNIT 1891 HIGHLIGHTS

1851-1955 SCOTT FUTRELL DR | CHARLOTTE, NC 28208



SQUARE FOOTAGE

±4,012 SF total
±808 SF office
±3,206 SF warehouse
±778 SF unfinished mezzanine

WAREHOUSE

1 dock high door (10'x10')
18' clear height
Wet sprinkler system

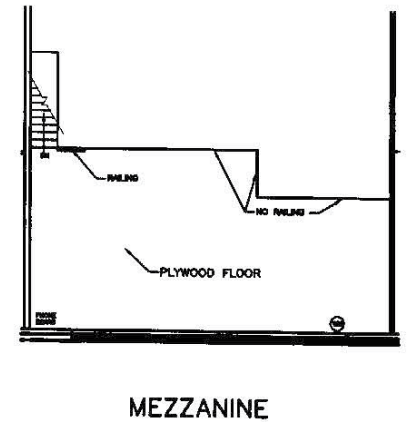
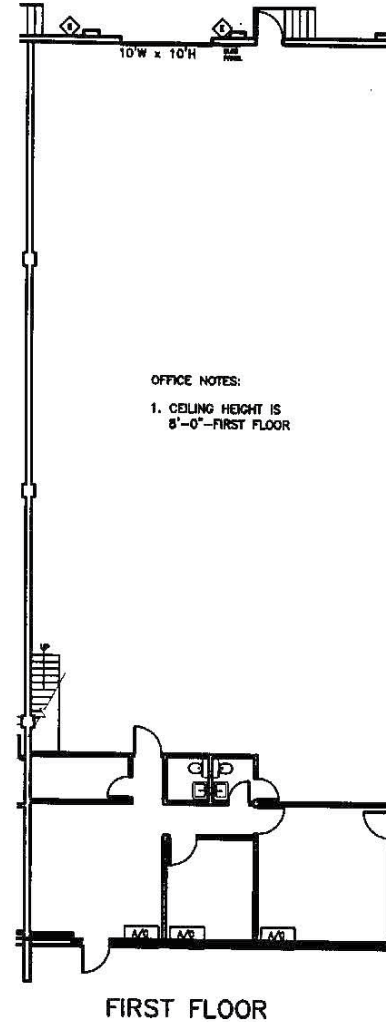
LOCATION

Convenient access to I-85, I-77, & CLT Airport

AVAILABILITY

August 31, 2024

CONTACT BROKER FOR PRICING



UNIT 1945 HIGHLIGHTS

1851-1955 SCOTT FUTRELL DR | CHARLOTTE, NC 28208



SQUARE FOOTAGE

±4,006 SF total
±817 SF office
±3,189 SF warehouse
±781 SF unfinished mezzanine

WAREHOUSE

1 drive in door (12'x12')
18' clear height
Wet sprinkler system

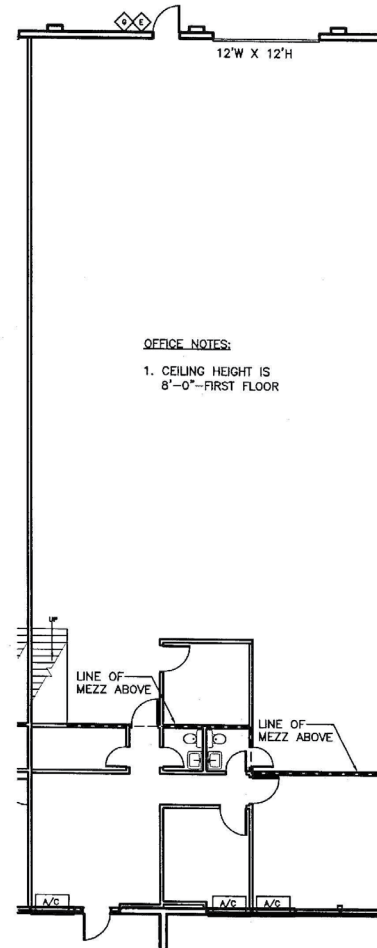
LOCATION

Convenient access to I-85, I-77, & CLT Airport

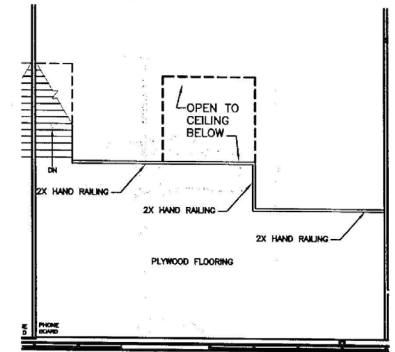
AVAILABILITY

September 30, 2024

CONTACT BROKER FOR PRICING



FIRST FLOOR



MEZZANINE