

For Lease

RIPCO
RETAIL LEASING

Port Washington, NY

410 Main Street



| 3,200 SF + Basement

Freestanding former event space

Contact
Exclusive Agents

Jason Sobel
jsobel@ripcony.com | 516.346.8290

Sydney Schmitt
sschmitt@ripcony.com | 516.933.8880

Photos

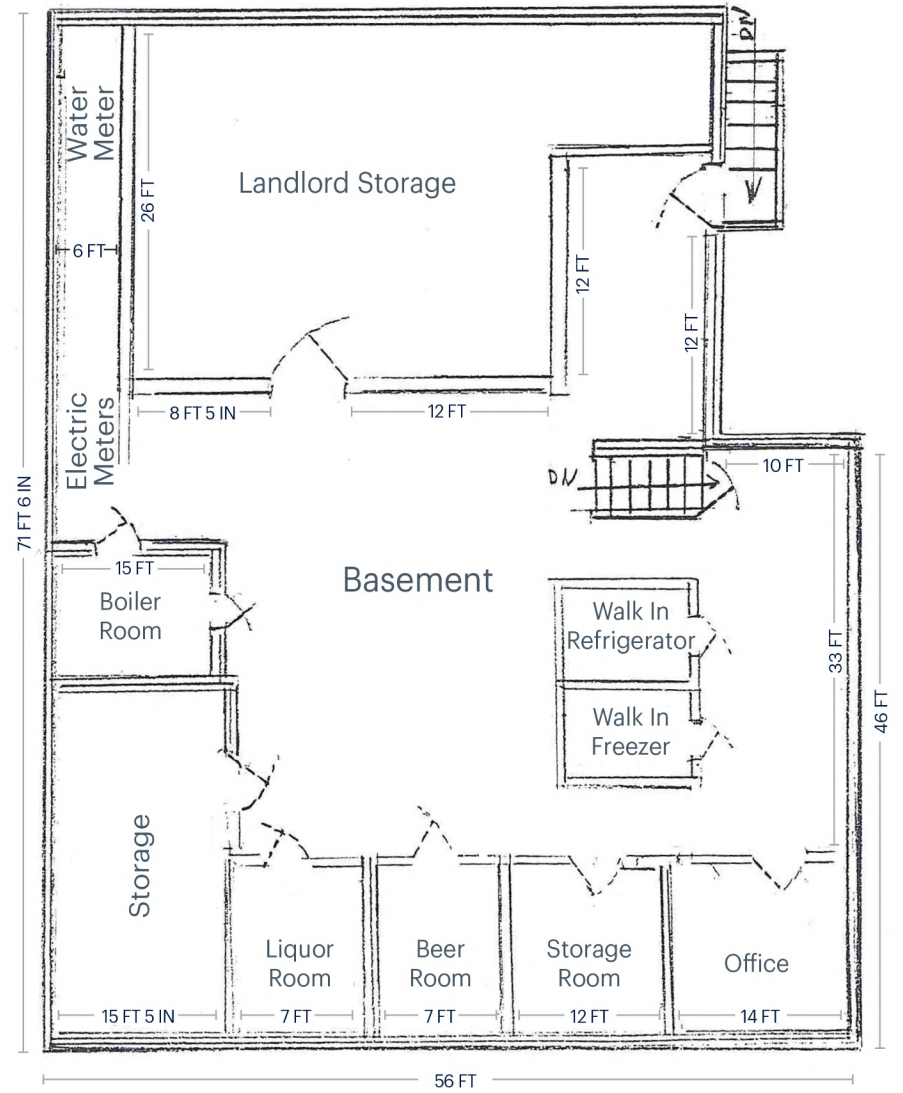
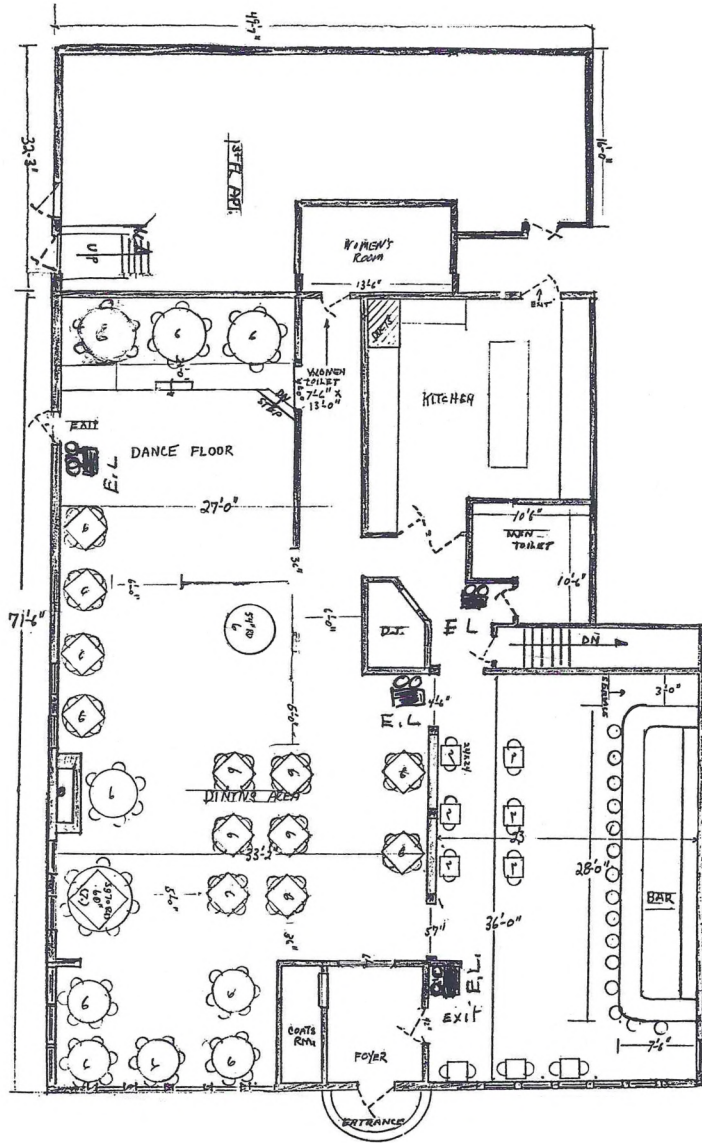


Space Details

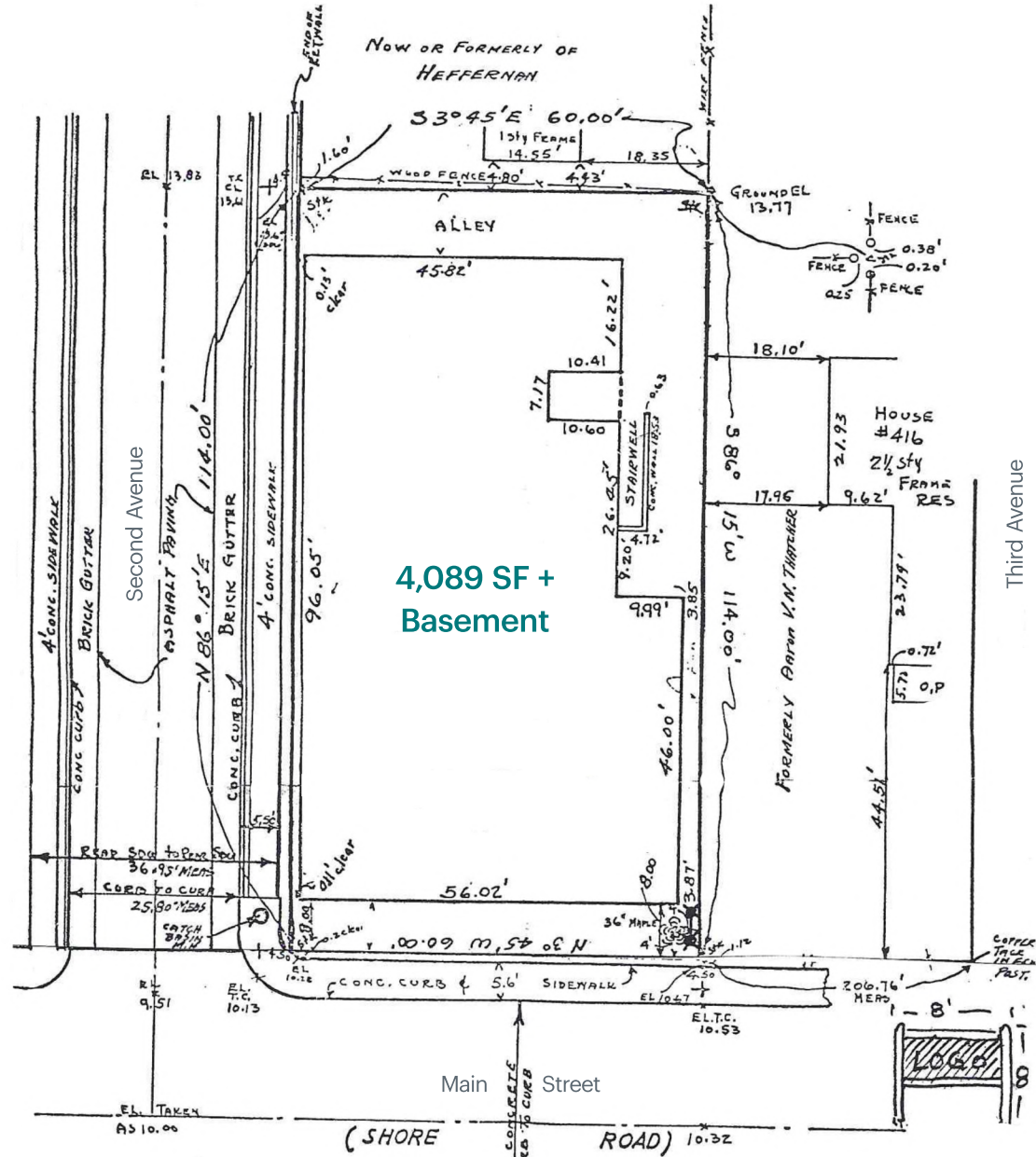


Size	3,200 SF + Basement
Frontage	Approx. 56 FT
Rent	Upon request
Neighbors	Louie's Prime Steak and Seafood, Landmark on Main, Fathoms Hotel and Marina, Manhasset Bay Yacht Club
Comments	Freestanding former event space with vented kitchen Located on Main Street, steps away from the primary retail corridor in Port Washington Waterfront-facing location by Louie's Prime Steak and Seafood Directly across from Manhasset Bay Harbor Close proximity to the LIRR

Floor Plans

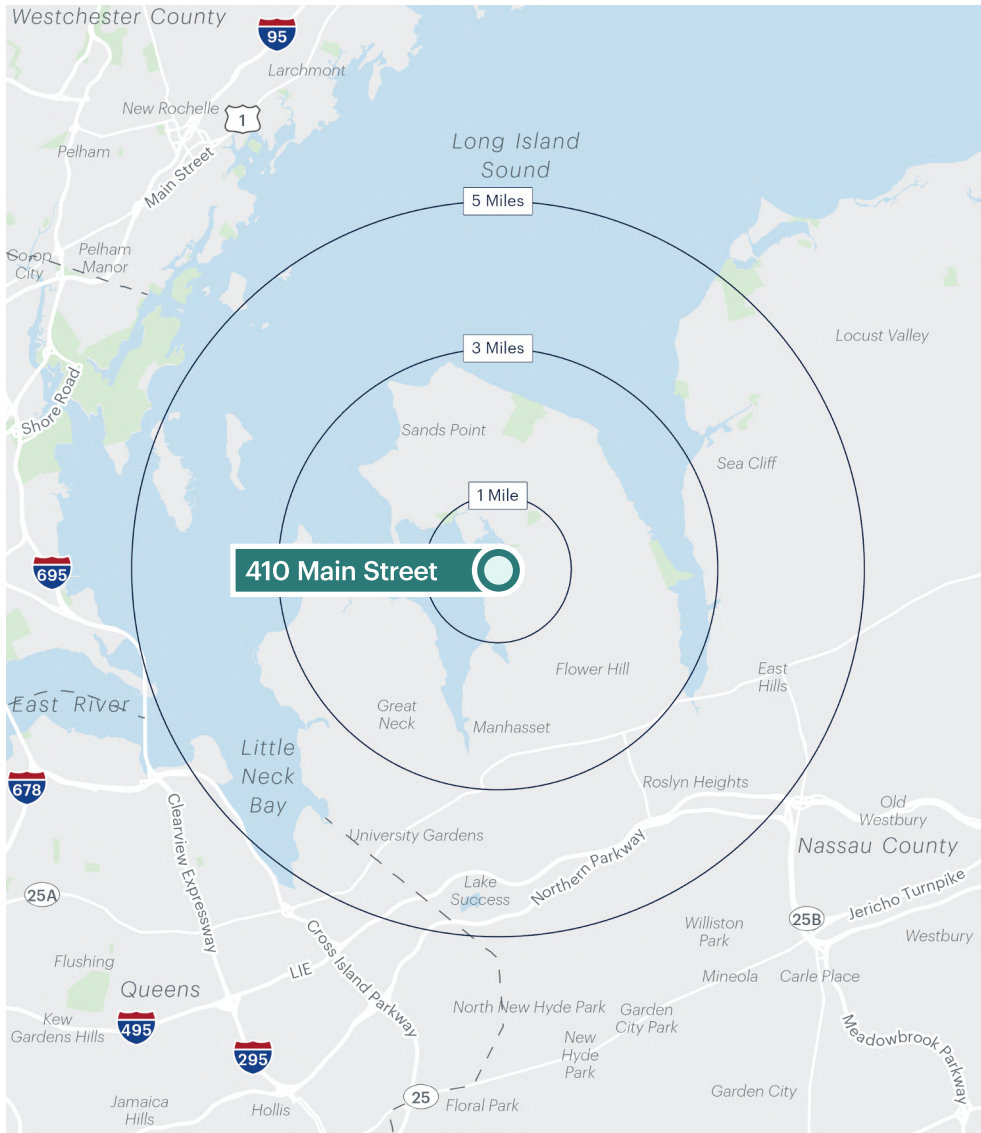


Survey



Area Retail





Area Demographics

	1 mile	3 miles	5 miles
Population	12,810	66,555	179,654
Total Households	5,017	23,044	65,012
Average Household Income	\$253,065	\$280,812	\$232,844
Median Household Income	\$156,426	\$181,490	\$150,570
% Population with Bachelors +	65.85%	70.85%	64.21%
Daytime Population	12,654	67,217	208,880
Total Daytime Employees	6,386	31,656	114,433
Total Businesses	898	3,209	10,008