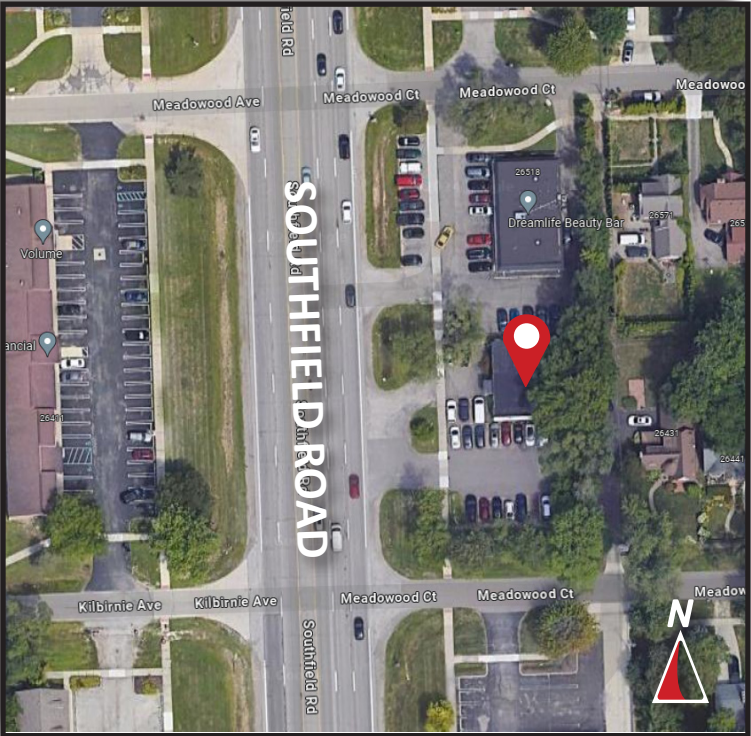




# FOR LEASE

26400 Southfield Road  
Lathrup Village, Michigan  
2,500 Square Feet



- 2,500 Sq. Ft. with the First Floor Available for Lease
- Multiple Offices and a Conference Room
- Signage Available
- Perfect for a Professional Business
- New Ownership
- Close to I-696 with On and Off Access
- Many Restaurants and Shopping Available
- Four Miles to Beaumont Royal Oak and Twenty Minutes to Downtown Detroit
- Available April 1, 2024

**Burger & Company**

248.536.2888  
www.burgercollc.com

38345 W. 10 Mile Road, Suite 100  
Farmington Hills, MI 48335

**Michael Rose**  
Senior Associate  
Cell: 248.396.6982  
michael.rose@burgercollc.com

Information contained herein is deemed to be reliable but is not guaranteed and may be withdrawn at any time.



# FOR LEASE

26400 Southfield Road  
Lathrup Village, MI



## BUILDING SPECIFICATIONS

<b>Location</b>	Southfield Rd (10 Mile and 11 Mile)	<b>Total Building Square Feet</b>	2,500 SF
<b>Zoning</b>	Office	<b>Square Feet Available</b>	2,500 SF
<b>Lot Size</b>	0.28 Acres	<b>Office Square Feet</b>	2,500 SF

<b>Construction</b>	Brick	<b>Sewer</b>	City
<b>Restrooms</b>	Two (2)	<b>Gas</b>	Forced Air
<b>Parking</b>	22 Spots	<b>Water</b>	City
<b>Traffic Count</b>	51,756 Cars Per Day		

### Description

- 2,500 sq. ft. with the first floor available for lease
- Multiple offices and a conference room
- Signage available
- Perfect for a professional business
- New ownership
- Close to I-696 with on and off access
- Many restaurants and shopping available
- Four miles to Beaumont Royal Oak and twenty minutes to downtown Detroit
- Available April 1, 2024

<b>Lease Rate</b>	\$15.50 PSF
<b>Lease Type</b>	Goss Plus Utilites
<b>Availability</b>	April 1, 2024

**Burger**

& COMPANY

248.536.2888

www.burgercollc.com

38345 W. 10 Mile Road, Suite 100  
Farmington Hills, MI 48335

### Michael Rose

Senior Associate

Cell: 248.396.6982

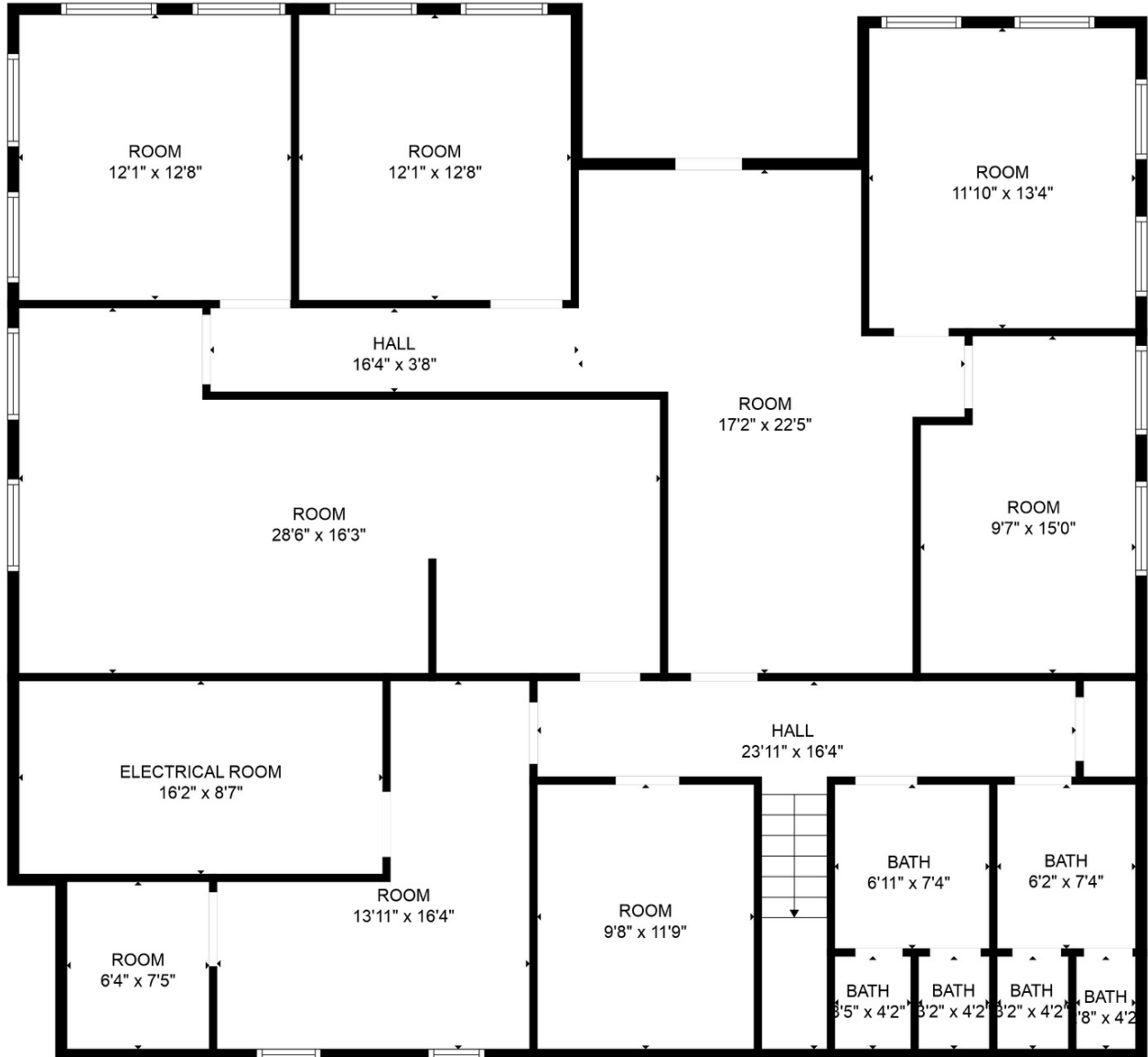
michael.rose@burgercollc.com

Information contained herein is deemed to be reliable but is not guaranteed and may be withdrawn at any time.

# FOR LEASE

26400 Southfield Road  
Lathrup Village, MI

---



**Burger**

& COMPANY

**Michael Rose**

Senior Associate

Cell: 248.396.6982

michael.rose@burgercollc.com

248.536.2888

[www.burgercollc.com](http://www.burgercollc.com)

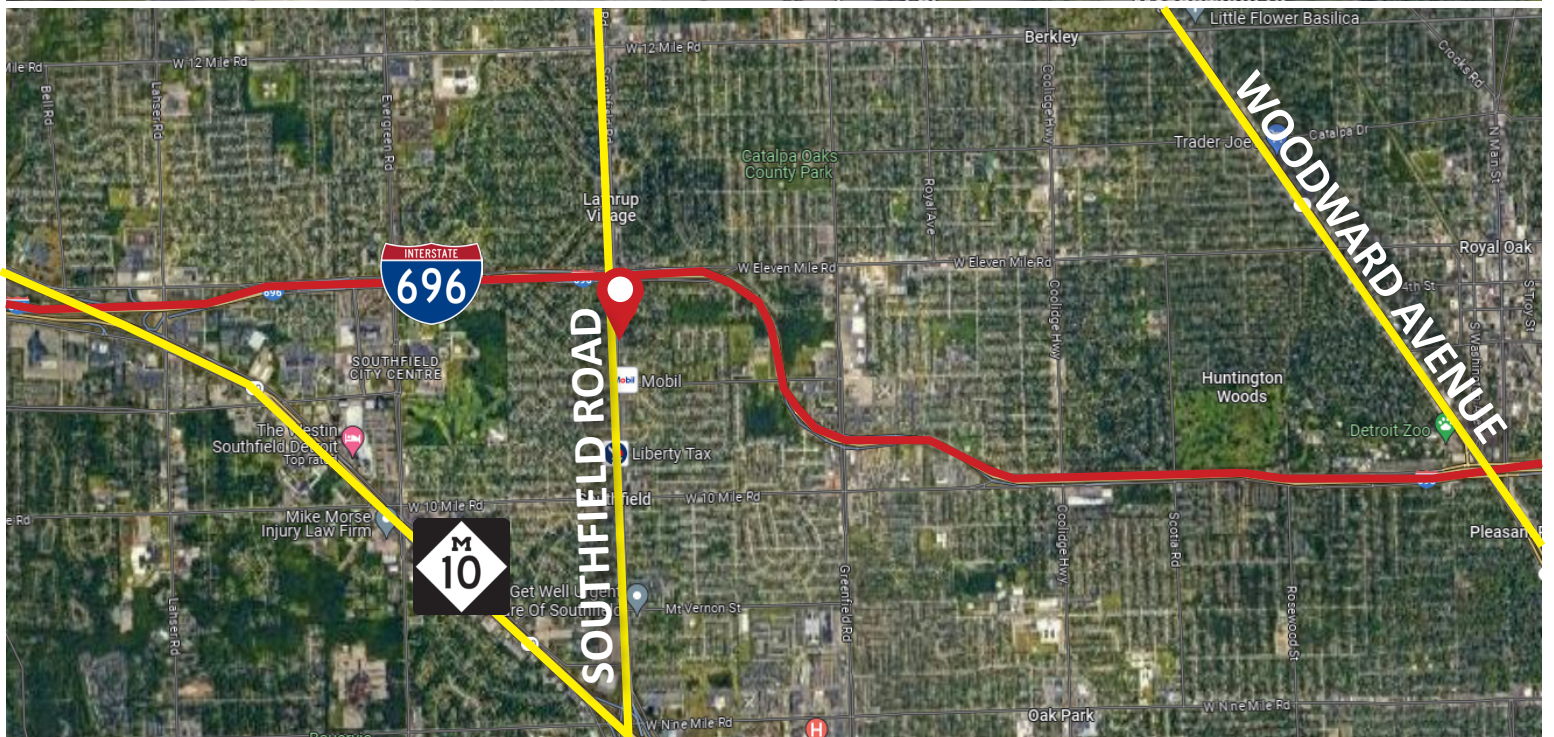
38345 W. 10 Mile Road, Suite 100  
Farmington Hills, MI 48335

Information contained herein is deemed to be reliable but is not guaranteed and may be withdrawn at any time.



# FOR LEASE

26400 Southfield Road  
Lathrup Village, MI



**Burger**

& COMPANY

248.536.2888

[www.burgercollc.com](http://www.burgercollc.com)

38345 W. 10 Mile Road, Suite 100  
Farmington Hills, MI 48335

**Michael Rose**

Senior Associate

Cell: 248.396.6982

[michael.rose@burgercollc.com](mailto:michael.rose@burgercollc.com)

Information contained herein is deemed to be reliable but is not guaranteed and may be withdrawn at any time.