

OFFICE FOR SUBLEASE 1506 JOH AVENUE

Baltimore, MD 21227

Available: 2,241 SF



LISTING DATA

AVAILABLE SF: 2,241 SF
LEASE TERM: Through June 30, 2028

ECONOMIC DATA

LEASE RATE: Call For Info

PROPERTY INFORMATION

COUNTY: Baltimore City
SUBMARKET: Baltimore SW

BUILDING DATA

TOTAL BUILDING SF: 24,850 SF
ZONING: M-1-1 / ML

PROPERTY OVERVIEW

Explore the exceptional potential of this property at 1506 Joh Avenue, Baltimore, MD, 21227. With modern amenities, versatile spaces, and ample parking, this property is designed to meet the diverse needs of tenants. The strategic location provides excellent visibility and accessibility, making it an ideal choice for businesses looking to establish or expand their presence.

PROPERTY HIGHLIGHTS

- Modern amenities
- Versatile spaces
- Ample parking
- Excellent visibility
- Strategic location

Kate Jordan, SIOR
Principal
410.336.5314
kjordan@lee-associates.com

Marley Welsh, SIOR
Principal
443.741.4050
mwelsh@lee-associates.com

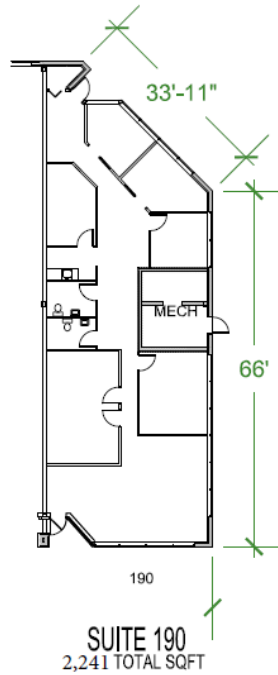
Samantha Eckels
Associate
443.741.4047
seckels@lee-associates.com

All information furnished regarding property for sale, rental or financing is from sources deemed reliable, but no warranty or representation is made to the accuracy thereof and same is submitted to errors, omissions, change of price, rental or other conditions prior to sale, lease or financing or withdrawal without notice. No liability of any kind is to be imposed on the broker herein.

OFFICE FOR SUBLEASE
1506 JOH AVENUE

Baltimore, MD 21227

Available: 2,241 SF



Kate Jordan, SIOR
Principal
410.336.5314
kjordan@lee-associates.com

Marley Welsh, SIOR
Principal
443.741.4050
mwelsh@lee-associates.com

Samantha Eckels
Associate
443.741.4047
seckels@lee-associates.com

All information furnished regarding property for sale, rental or financing is from sources deemed reliable, but no warranty or representation is made to the accuracy thereof and same is submitted to errors, omissions, change of price, rental or other conditions prior to sale, lease or financing or withdrawal without notice. No liability of any kind is to be imposed on the broker herein.