

ZONED L-1

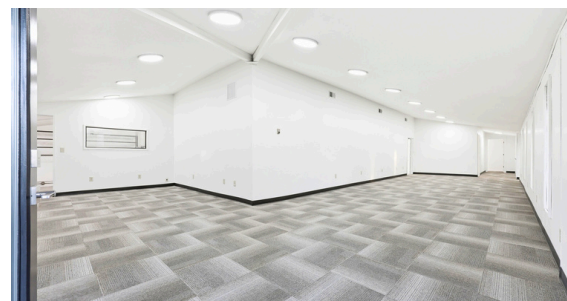
941 SW Alder St, Dundee, OR 97115

For Lease



\$15/SF/YR

Recently updated single story wood frame warehouse with approx 12 ft high ceilings. 3,300 sf warehouse with 1,500 sf office space, 2 restrooms and 10'x10' bay door. *Additional 1,200 sf storage space can be cleared out and finished if tenant needs more space now, or at a later date.



4,800 SF

JORIE GIROD

PRINCIPAL BROKER, COMMERCIAL DIVISION

503-737-8038

joriegirodrealtor@gmail.com

OR Lic# 200402438



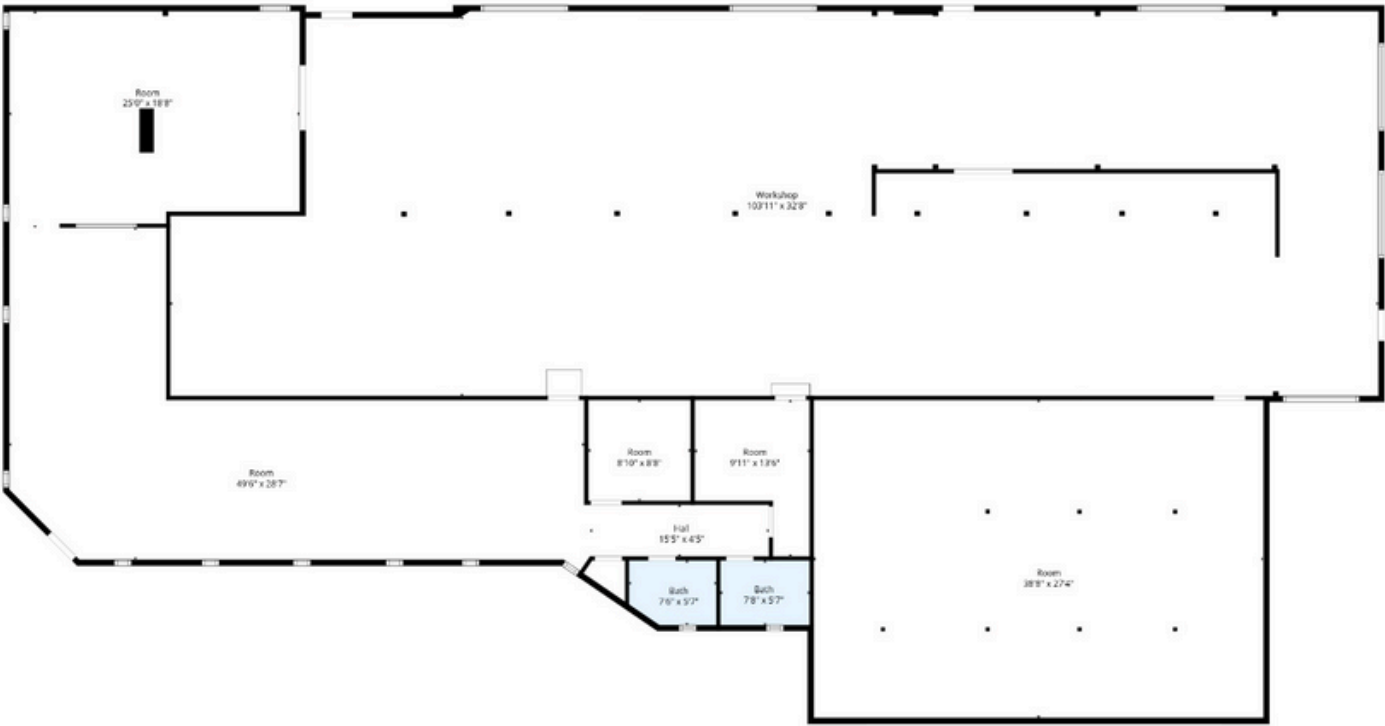
**COLDWELL
BANKER**

PROFESSIONAL
GROUP

COMMERCIAL DIVISION



FLOORPLANS:



TOTAL: 1260 sq. ft
1st floor: 1260 sq. ft
EXCLUDED AREAS: ROOM: 1532 sq. ft, WORKSHOP: 3231 sq. ft, WALLS: 176 sq. ft

Floor Plan Created By Cubicasa App. Measurements Deemed Highly Reliable But Not Guaranteed.

INTERIOR PHOTOS:

