



# For lease

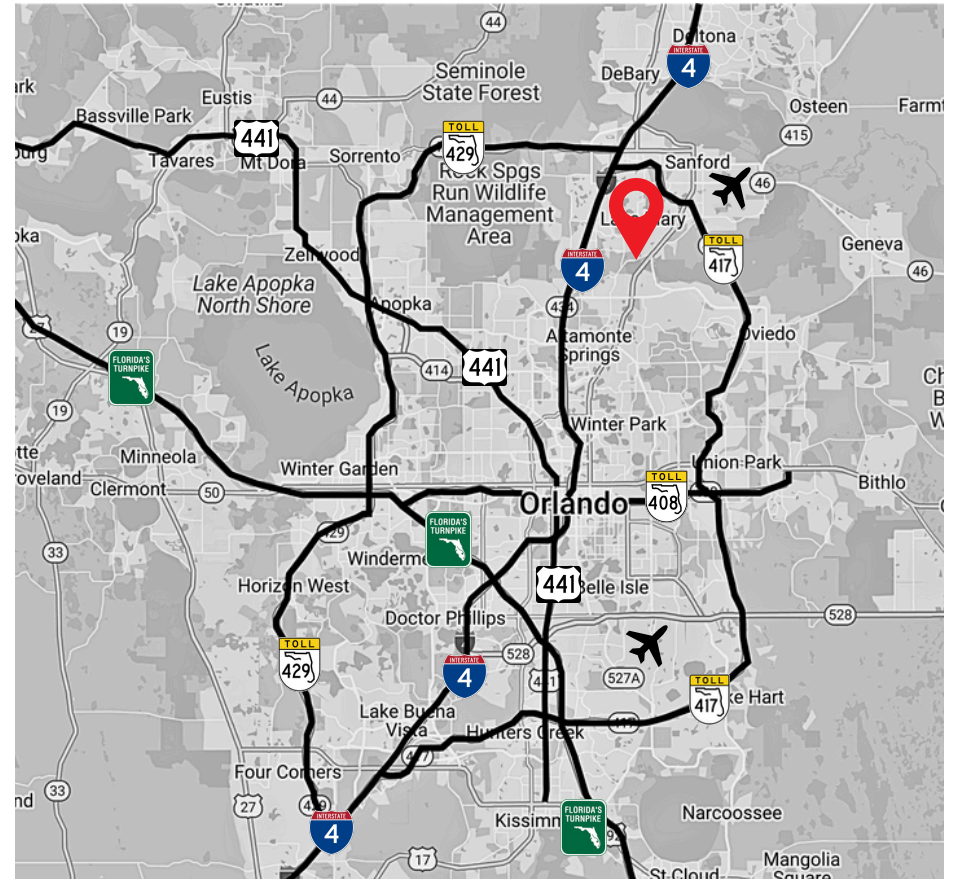
1830 Longwood Lake Mary Rd, Longwood, Florida 32750

5,000 SF available

# Property overview and demographics

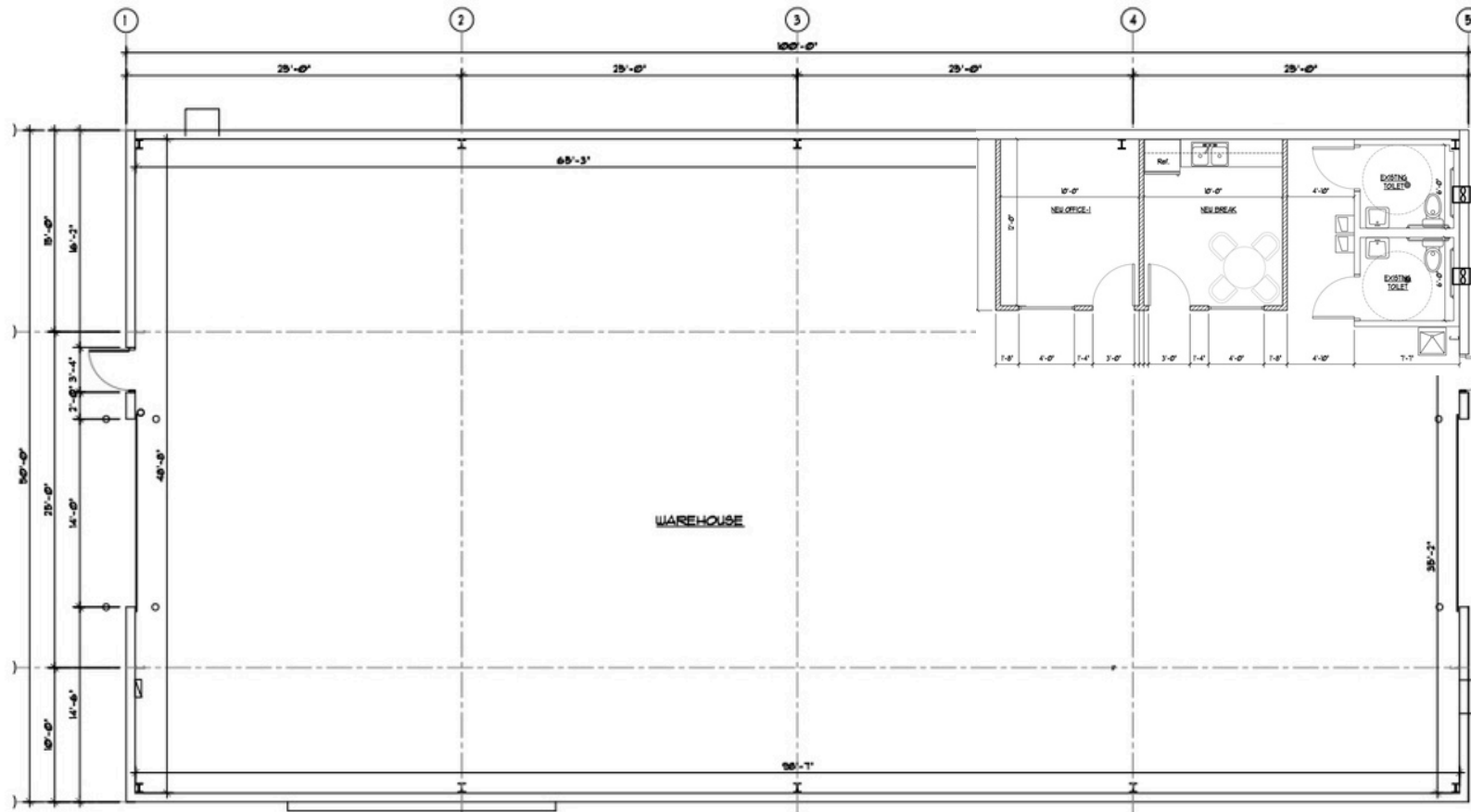
## Property specifications

- Suite 1834
- 5,000 SF
- 384 SF office
- 2 grade doors
- Cross dock
- 18' clear height
- 200 amp, 3 phase power
- Free-standing building
- Zoned PCD, Seminole County
- Call for pricing



	30 min	60 min	90 min
Total population	1,186,575	3,390,084	5,256,932
Total households	462,052	1,293,492	2,062,187
Avg households	\$110,723	\$108,587	\$104,500
Total businesses	61,002	139,698	196,672
Total employees	625,477	1,442,802	2,029,425

# Proposed floor plan



1 PROPOSED FLOOR PLAN  
SCALE: 1/8"=1'-0"



**JLL****Kristin Griffin**

Vice President

Kristin.Griffin@jll.com

+1 407 739 8285

**Bobby Isola, SIOR,CCIM**

Executive Managing Director

Bobby.Isola@jll.com

+1 321 239 7918