



JAMISON
COMMERCIAL PARTNERS

PRIME OFFICE SPACE ON WEST COLONIAL DRIVE

1601 W COLONIAL DRIVE
ORLANDO, FL 32804

AVAILABLE - CALL FOR PRICING

Jamison Commercial Partners proudly offers for lease a 10,794 SF, two-story office building strategically located on West Colonial Drive. High end office buildout with private offices and cubicle space. Minutes west of Downtown Orlando, this highly visible property provides excellent exposure and connectivity.

PROPERTY OVERVIEW

- » 10,794 SF free standing building
- » 37 parking spaces
- » Zoning: O-1/T, City of Orlando
- » Traffic Count (AADT): W Colonial Drive - 28,500
- » Monument signage available



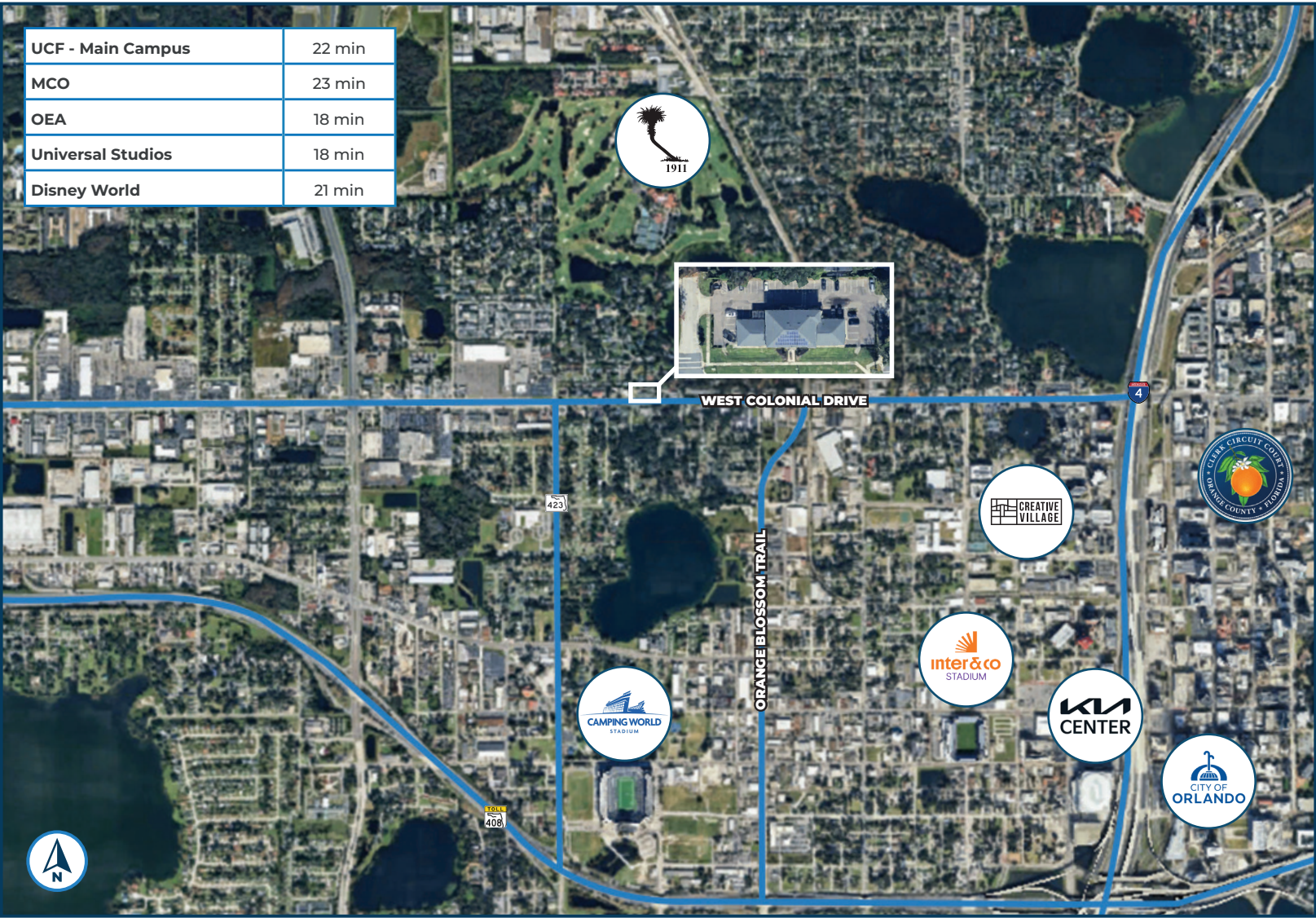
**GUNNER
LESLIE**
CHUCK
HOLLIDAY

VICE PRESIDENT | **O:** 407.370.3244 | **M:** 407.949.2100
GLESIE@JAMISONCOMMERCIAL.COM

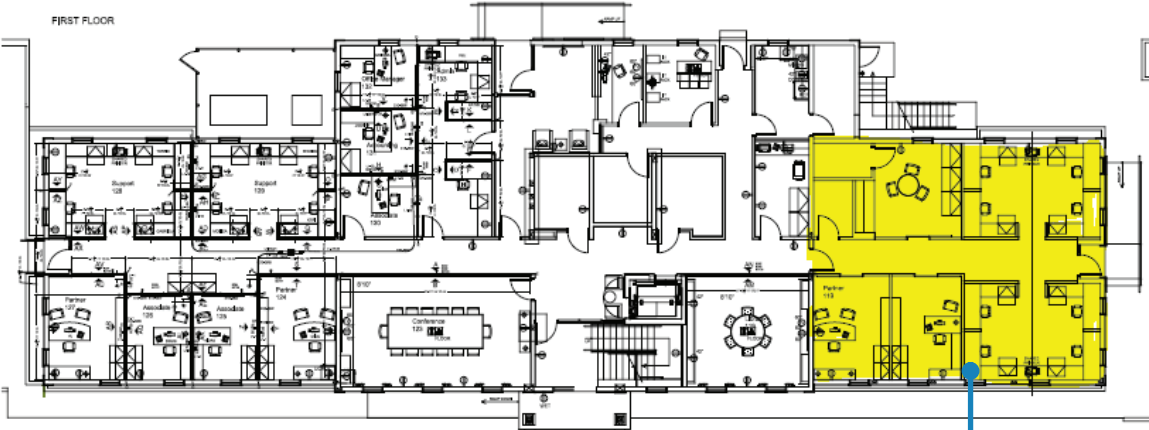
SR VICE PRESIDENT | **O:** 407.370.3244 | **M:** 407.256.2554
CHOLLIDAY@JAMISONCOMMERCIAL.COM

JAMISONCOMMERCIAL.COM

PROXIMITY MAP

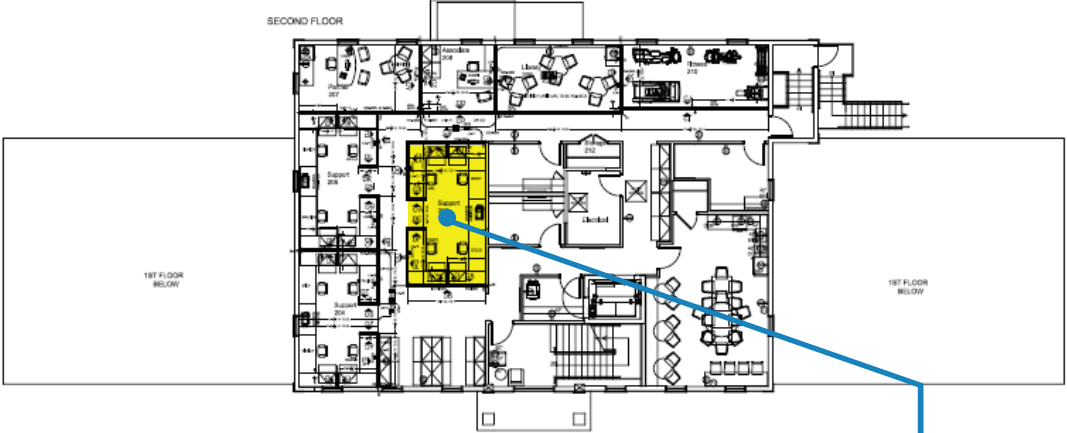


FLOORPLAN



PLAN VIEW- FIRST FLOOR
SCALE: 1/8" = 1'

The yellow highlighted area is wide open office space, floorplan depicts potential office buildout.



PLAN VIEW- SECOND FLOOR
SCALE: 1/8" = 1'

The yellow highlighted area is space where cubicles have been removed.



JAMISON COMMERCIAL PARTNERS - 135 W. CENTRAL BLVD., STE. 450, ORLANDO, FL 32801

No warranty or representation, express or implied, is made as to the accuracy of the information contained herein, and same is submitted subject to errors, omissions, change of price, rental or other conditions, withdrawal without notice, and to any special listing conditions imposed by our principals.

JAMISONCOMMERCIAL.COM

