



RETAIL SPACE

WESTFIELD, NJ

76 ELM STREET

Located in Downtown Westfield

SIZE

Ground Floor 4,148 SF

Basement 3,928 SF*

*For storage use only

ASKING RENT

Upon Request

NEIGHBORS

Bluemercury, QDOBA Mexican Eats, Trader Joe's, Starbucks, Athleta, Warby Parker, Casa di Pizza, J. McLaughlin, Urban Outfitters, Sweet Waters Steakhouse, Sugaring NYC, sweetgreen, GAP, StretchLab, Faherty, Rumble, Banana Republic, 2nd Street, Chipotle, Millburn Deli

COMMENTS

Prominent location in one of Northern New Jersey's most beautiful and affluent downtowns

Central location surrounded by national retailers with excellent visibility from Westfield's main signalized intersection

Exceptional demographics in the surrounding area

Elegant, wide storefront with exceptional visibility and refined architectural details — a perfect setting for elevated brand experiences.

Space features beautiful lighting, high ceilings, large dry basement, and three rear entrances to the back alley for loading

CONTACT EXCLUSIVE AGENTS

LISA RICCA

lricca@ripconj.com

201.636.7449

THERESE O'BRIAN

tob@ripconj.com

201.249.6616

RIPCO
REAL ESTATE

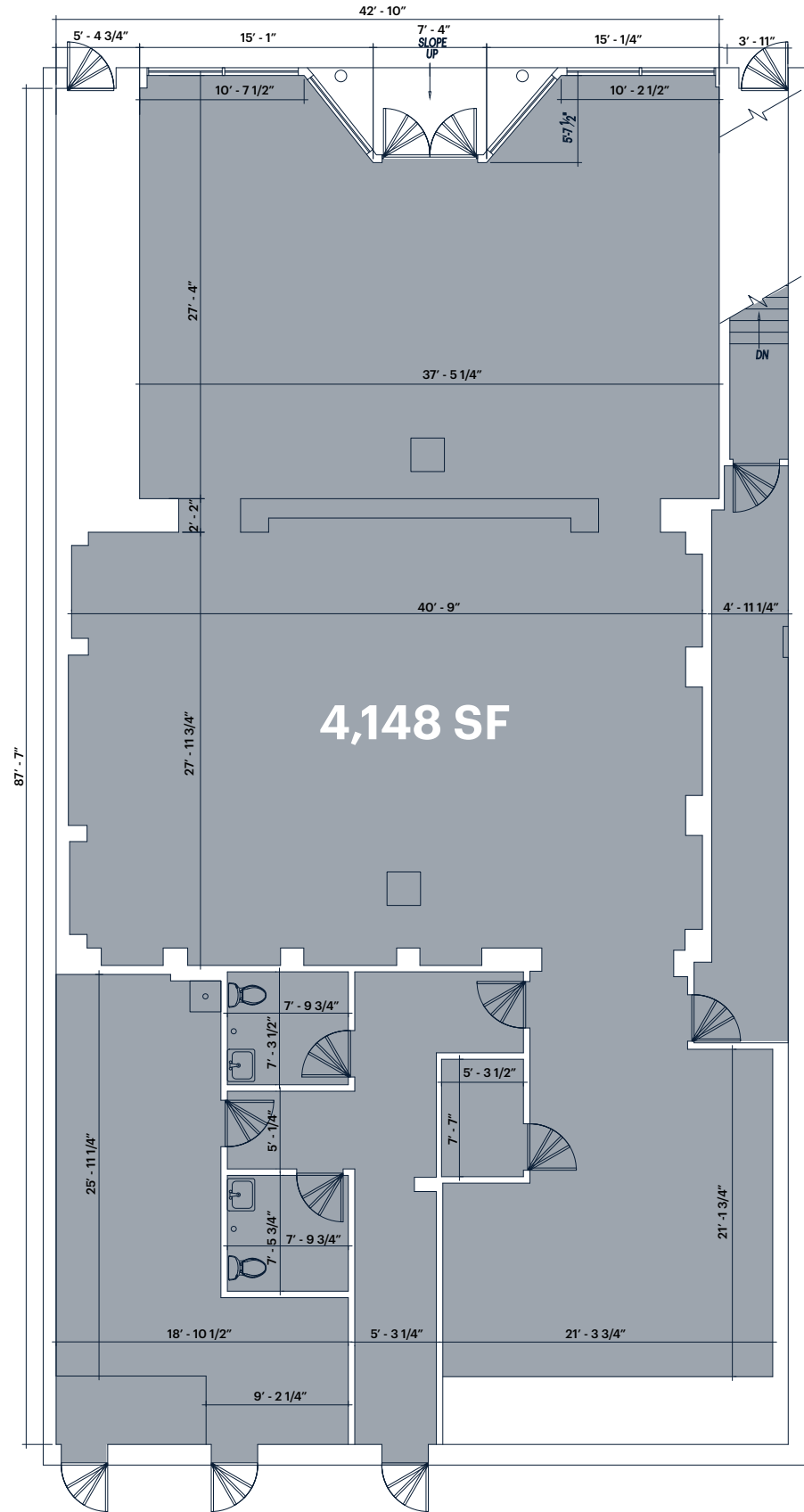
611 River Drive
3rd Floor
Elmwood Park, NJ 07407
201.777.2300

Please visit us at ripconj.com for more information

This information has been secured from sources we believe to be reliable, but we make no representations as to the accuracy of the information. References to square footage are approximate. Buyer must verify the information and bears all risk for any inaccuracies.

FLOOR PLANS

GROUND FLOOR

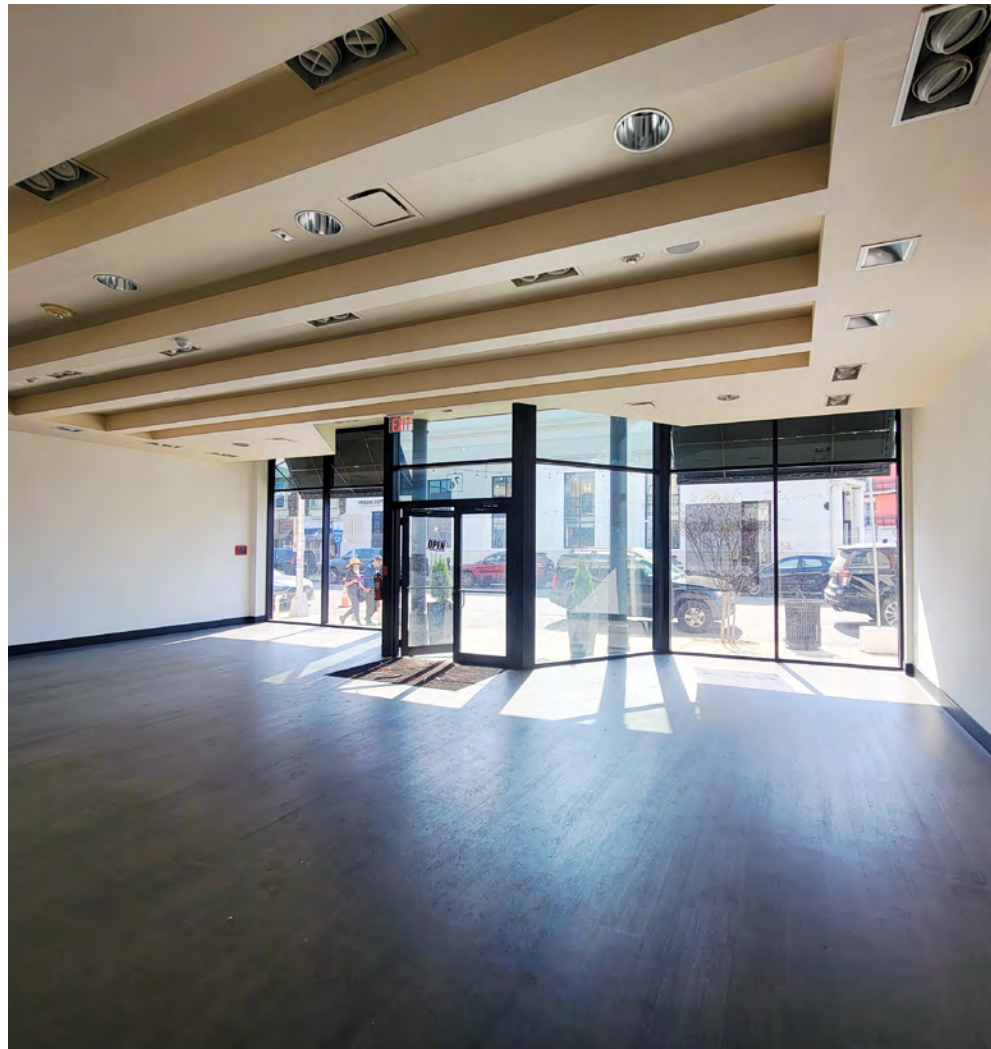


ELM STREET

BASEMENT (FOR STORAGE USE ONLY)



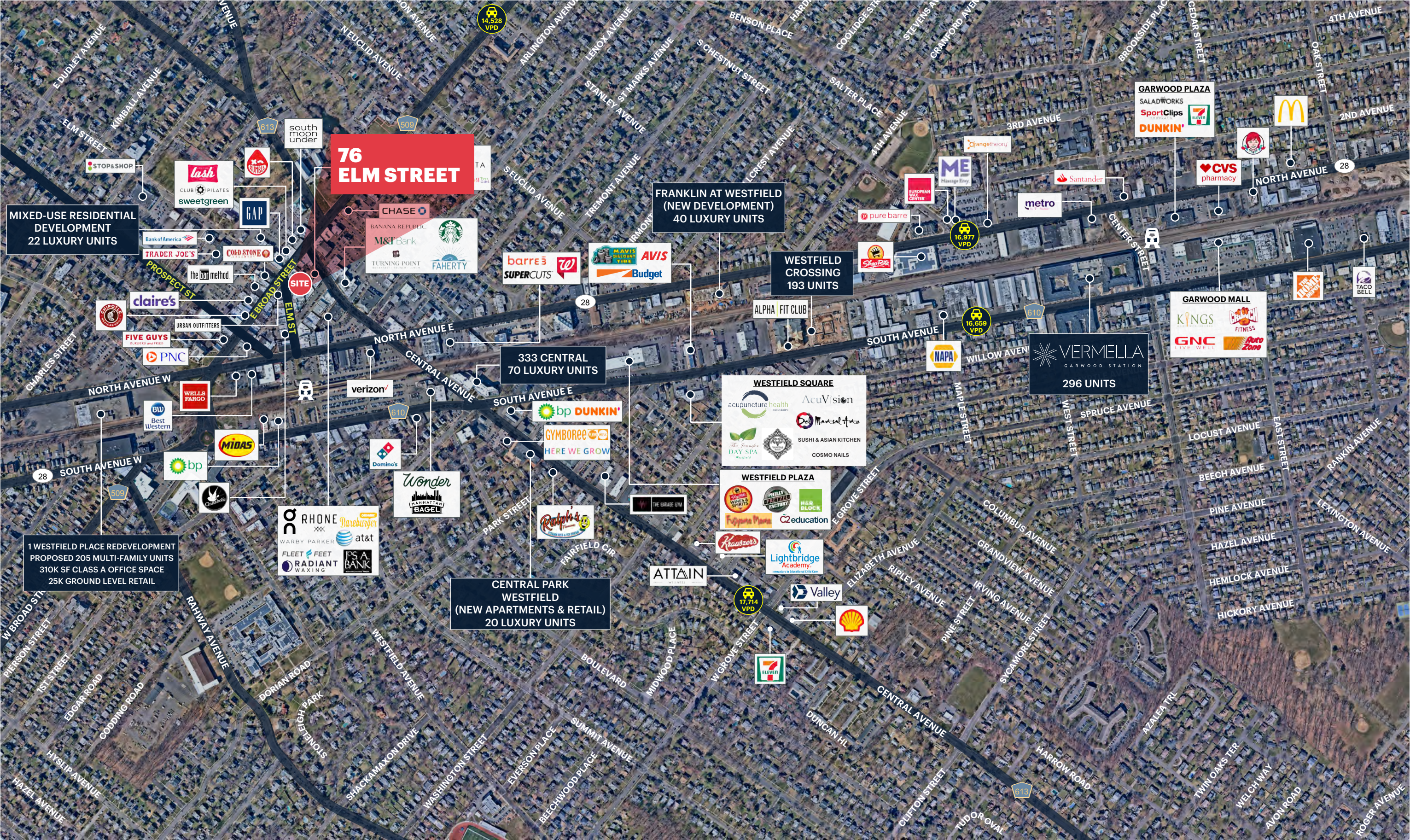
INTERIOR/ADDITIONAL PHOTOS



AREA NEIGHBORS



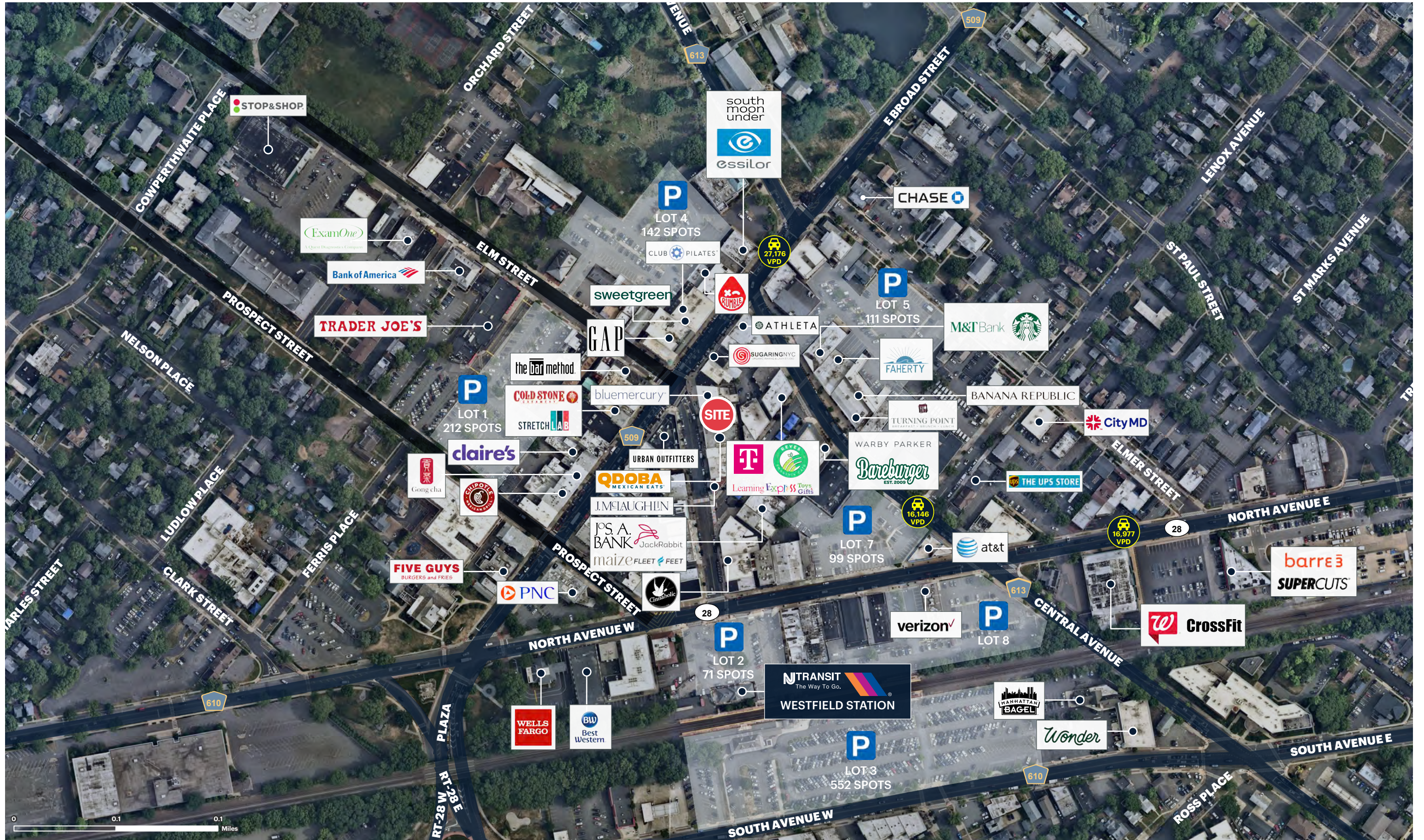
MARKET AERIAL



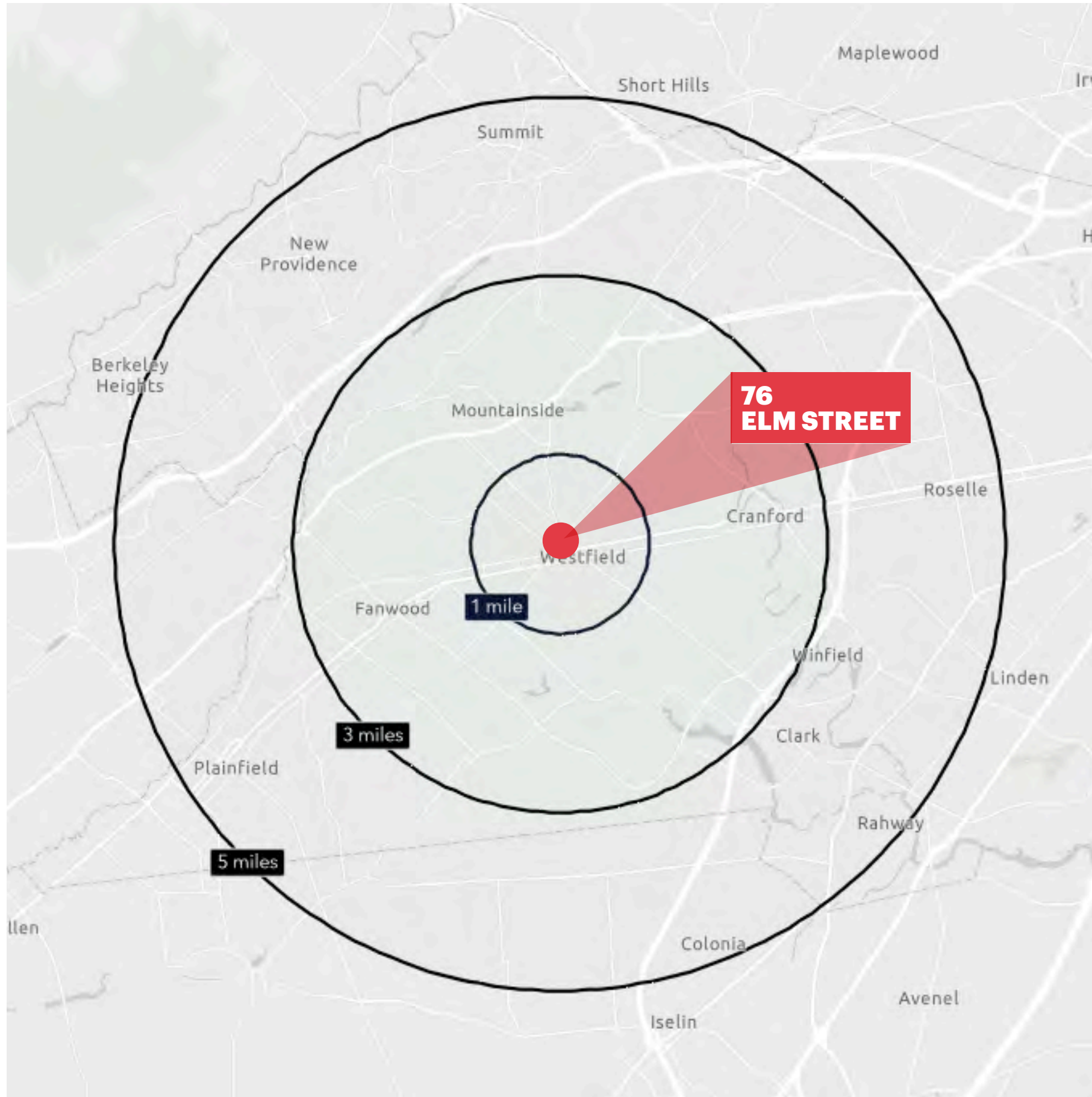
STREETVIEW AERIAL



PARKING



DEMOGRAPHICS



1 MILE RADIUS

POPULATION
17,888

HOUSEHOLDS
6,255

MEDIAN AGE
41.2

COLLEGE GRADUATES (Bachelor's +)
9,112 - 77.3%

TOTAL BUSINESSES
1,092

TOTAL EMPLOYEES
15,658

AVERAGE HOUSEHOLD INCOME
\$271,956

3 MILE RADIUS

POPULATION
109,155

HOUSEHOLDS
39,230

MEDIAN AGE
42.2

COLLEGE GRADUATES (Bachelor's +)
51,153 - 67.9%

TOTAL BUSINESSES
4,680

TOTAL EMPLOYEES
63,207

AVERAGE HOUSEHOLD INCOME
\$240,643

5 MILE RADIUS

POPULATION
360,172

HOUSEHOLDS
127,643

MEDIAN AGE
41.3

COLLEGE GRADUATES (Bachelor's +)
135,225 - 53.6%

TOTAL BUSINESSES
13,609

TOTAL EMPLOYEES
177,808

AVERAGE HOUSEHOLD INCOME
\$186,790

*2024 estimates