

# BALLPARK MULTI-FAMILY SITE

1518 S 300 W, Salt Lake City, UT



- Price: \$8,000,000.00 (+/- \$118/SF)
- Approved 271 Unit Apartment Building
- Zoning: CG (General Commercial)
- 1.55 Acres
- Premium Ballpark Location
- QCT (Qualified Census Tract)
- Adjacent 0.91 acre parcel available

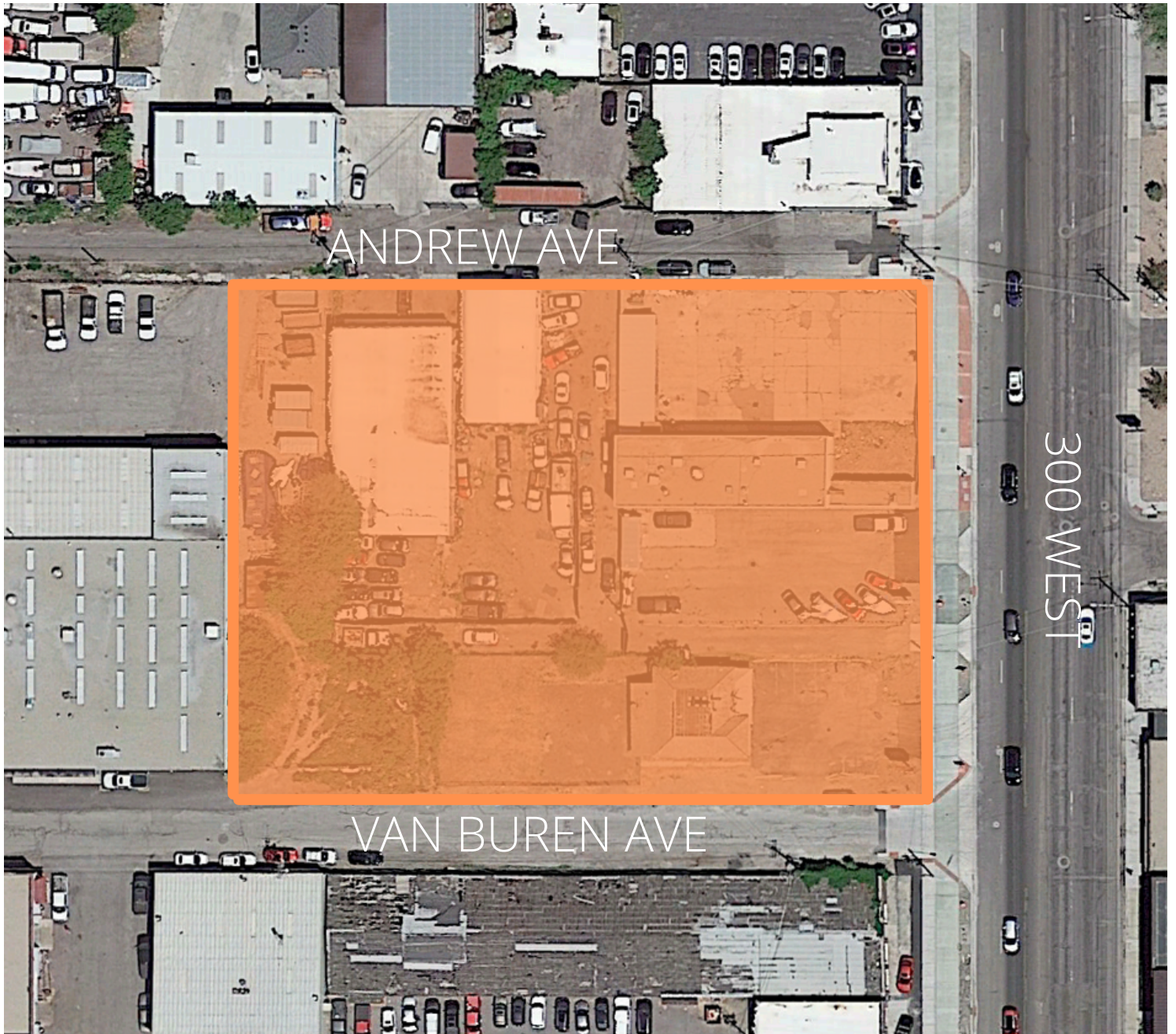
**ALIGN**  
COMPLETE REAL ESTATE SERVICES

Jonah Hornsby, CCIM  
Managing Partner  
Jonah@acresutah.com | 801-580-4945



# LOCATION

1518 S 300 W, Salt Lake City, UT



Situated in the Ballpark District in Salt Lake City, this development site has Zoning approvals for a high density multi-family project. Located one half of a mile to the 1300 S and I-15 ramps as well as the 1300 S Trax stop.



# PROJECT DETAILS

1518 S 300 W, Salt Lake City, UT

- 271 Units
  - 10 - Studio Units
  - 24 - 1 Bed Units
  - 205 - 1 Bed + Den Units
  - 15 - 2 Bed Units
  - 17 - 2 Bed + Den Units
- 259 Parking Stalls
- Retail/Restaurant Space
- Amenity Deck with Pool & Hot Tub
- 8 Stories
- Approved through Planning Dept
- All 3rd Party Reports Available
- Potential to Increase Unit Count

