

INDUSTRIAL SPACE FOR LEASE

CROSSPOINT
AT PALMETTO COMMERCE PARK

Crosspoint VI

26,000 SF Class "A" Industrial Space
for Lease in North Charleston

4279 CROSSPOINT DRIVE | LADSON, SOUTH CAROLINA



FOR MORE INFORMATION:

Michael G. White, SIOR, CCIM

BROKER-IN-CHARGE

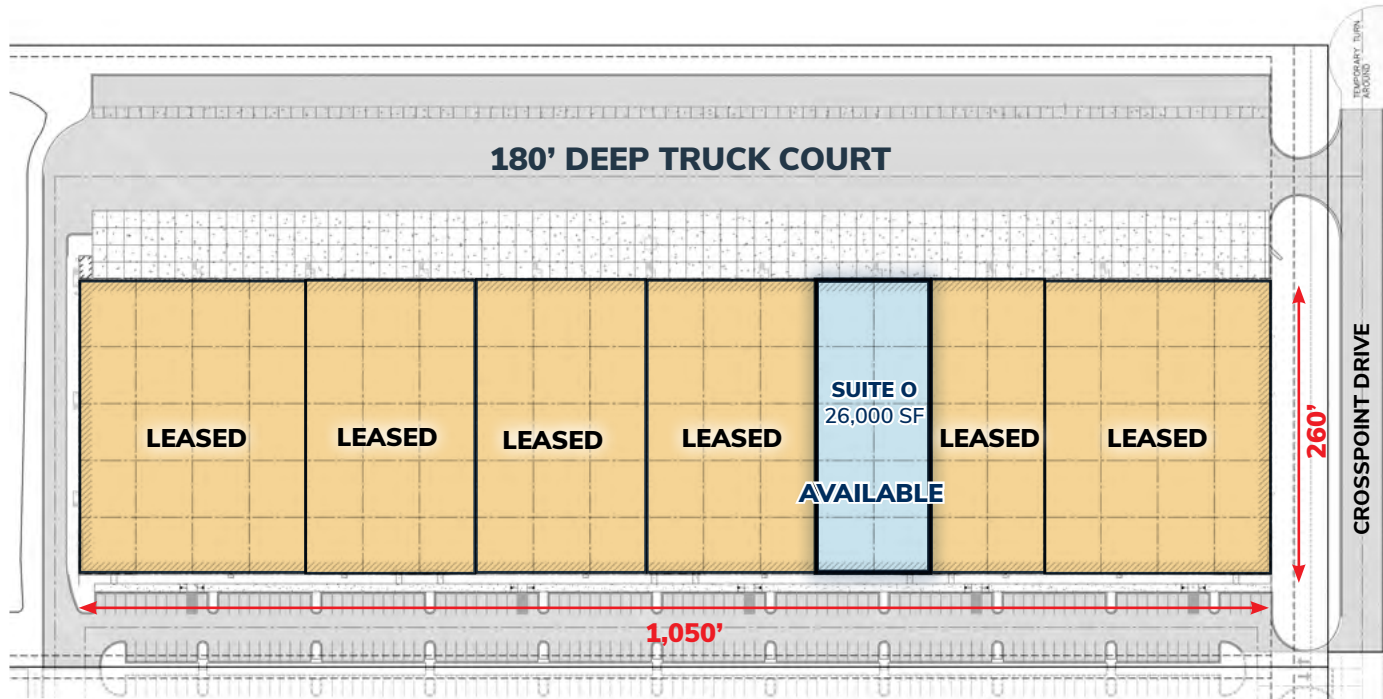
mike.white@charlestonindustrial.com

Mobile / (843) 819-1234

CK Childress
Klein

CHARLESTON INDUSTRIAL

www.crosspointcharleston.com



SUITE 0 SPECIFICATIONS

- 26,000 SF Total (2 Bays)
- 1,116 SF Office
- Six (6) 9' x 10' Dock Doors
- 8 Trailer Parking Spaces
- 18 Auto Parking Spaces
- Dimensions: 100' wide x 260' deep

BUILDING SPECIFICATIONS

- 273,000 SF Total Building Size
- 30' Clear Height
- Rear-Loading Facility
- 50' x 50' Bays with 60'-Deep Loading Bay
- Each Bay Totals 13,000 SF
- 277/480-Volt, 3-Phase Electrical
- ESFR Fire Sprinkler System
- Concrete Tilt-Wall Construction



FOR MORE INFORMATION:

Michael G. White, SIOR, CCIM

BROKER-IN-CHARGE

mike.white@charlestonindustrial.com

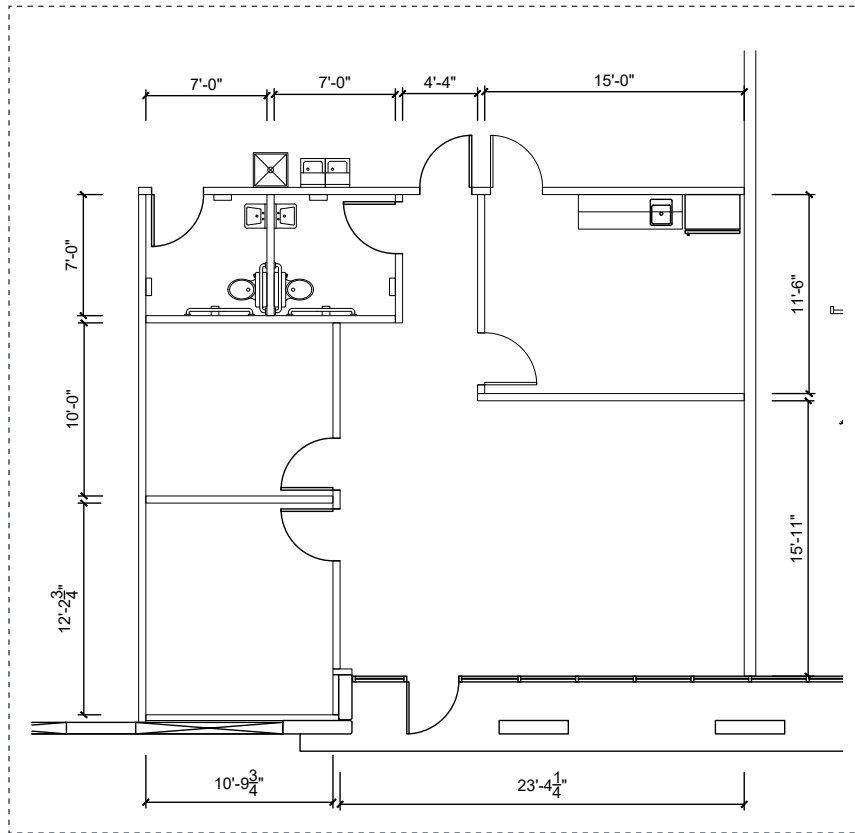
Mobile / (843) 819-1234

CK Childress
Klein

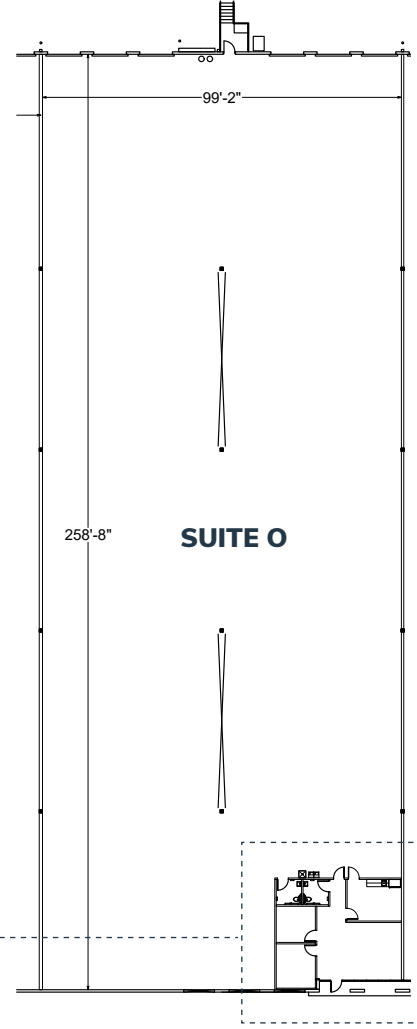
CHARLESTON INDUSTRIAL

www.crosspointcharleston.com

CROSSPOINT VI (SUITE O)
 4279 CROSSPOINT DRIVE



OFFICE ENLARGED



SUITE O SPECIFICATIONS

- 26,000 SF Total (2 Bays)
- 1,116 SF Office
- Six (6) 9' x 10' Dock Doors
- 8 Trailer Parking Spaces
- 18 Auto Parking Spaces
- Dimensions: 100' wide x 260' deep

BUILDING SPECIFICATIONS

- 273,000 SF Total Building Size
- 30' Clear Height
- Rear-Loading Facility
- 50' x 50' Bays with 60'-Deep Loading Bay
- Each Bay Totals 13,000 SF
- 277/480-Volt, 3-Phase Electrical
- ESFR Fire Sprinkler System
- Concrete Tilt-Wall Construction

FOR MORE INFORMATION:
Michael G. White, SIOR, CCIM
 BROKER-IN-CHARGE
 mike.white@charlestonindustrial.com
 Mobile / (843) 819-1234

CK Childress
 Klein
CHARLESTON INDUSTRIAL
 www.crosspointcharleston.com

SUMMERVILLE

AERIAL SITE PLAN

4279 CROSSPOINT DRIVE



**BOEING
IRC & 737
PROPULSION**

**MERCEDES-
BENZ VANS
MANUFACTURING**

**PALMETTO COMMERCE I-26
INTERCHANGE PROJECT
2026 COMPLETION DATE**

CROSSPOINT
AT PALMETTO COMMERCE PARK

LADSON ROAD

ASHLEY PHOSPHATE RD

NORTH
CHARLESTON

PALMETTO COMMERCE PKWY

DORCHESTER ROAD

10 MILES TO:
CHARLESTON
INTERNATIONAL
AIRPORT

**BOEING
787 FINAL
ASSEMBLY
CAMPUS**

DRIVING DISTANCES

- 0.6 MILES TO BOEING 787 INTERIORS CENTER
- 0.6 MILES TO BOEING 737 PROPULSION
- 0.5 MILES TO MERCEDES-BENZ VANS CAMPUS
- 10 MILES TO BOEING 787 DREAMLINER FINAL ASSEMBLY CAMPUS
- 21 MILES TO WANDO WELCH TERMINAL PORT OF CHARLESTON
- 22 MILES TO VOLVO CARS MANUFACTURING CAMPUS
- 41 MILES TO I-95 AND I-26 INTERCHANGE

FOR MORE INFORMATION:

Michael G. White, SIOR, CCIM

BROKER-IN-CHARGE

mike.white@charlestonindustrial.com

Mobile / (843) 819-1234

CK Childress
Klein

CHARLESTON INDUSTRIAL

www.crosspointcharleston.com