

FOR SALE

50.59 Acres



205 MILL STREET

ECORSE, MI 48229



CUSHMAN &
WAKEFIELD

PROPERTY HIGHLIGHTS

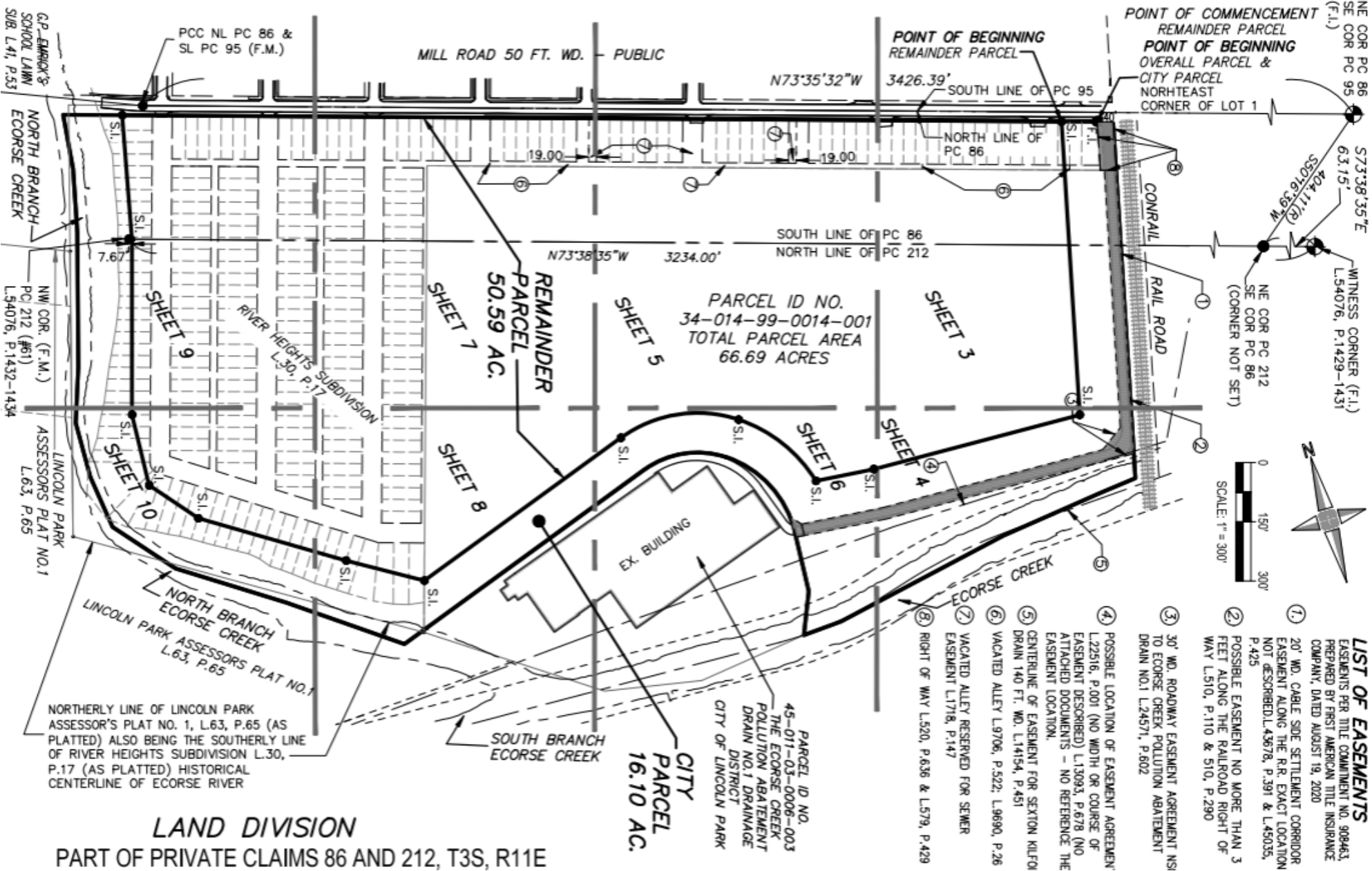
205 MILL STREET | ECORSE, MI



Address	205 Mill Street
City, State, Zip	Ecorse, MI 48829
County	Wayne
Land Area (Acres)	+/-50 acres
Parcel ID	34-014-99-0014-002
Zoning	Light Industrial
Square Footage	Potential for up to +/-670,000 SF
Electricity Provider	DTE - 4.8 kV aerial system on south side of Mill Street, 40 kV underground system on north side of Mill Street, and 120 kV aerial system on east and south side of site to CSO Facility
Natural Gas Provider	DTE - 6" medium-capacity gas main with MAOP of 35 psig is available on the north side of Mill Street between 9th Street and 5th Street. 12" high-capacity gas main with MOAP of 45 psig is available on the north side of Mill Street between 4th Street and W. Jefferson Avenue.
Water Provider	City of Ecorse - 6" and 12" parallel water main along Mill Street
Sewer Provider	City of Ecorse - 12"-18" sanitary sewer on the Site, parallel with Mill Street (approximately 150 feet offset southerly from centerline)
Railway	Class I CN railroad on E side of site
Freeway Access	I-75 via Southfield Road
Asking Price	\$5,000,000 (\$100,000/acre)
Miscellaneous	<ul style="list-style-type: none">Existing environmental and geotechnical studiesFederal, local, and state incentives availableClick here for further property infoClick here for drone flight

SITE PLAN

205 MILL STREET | ECORSE, MI

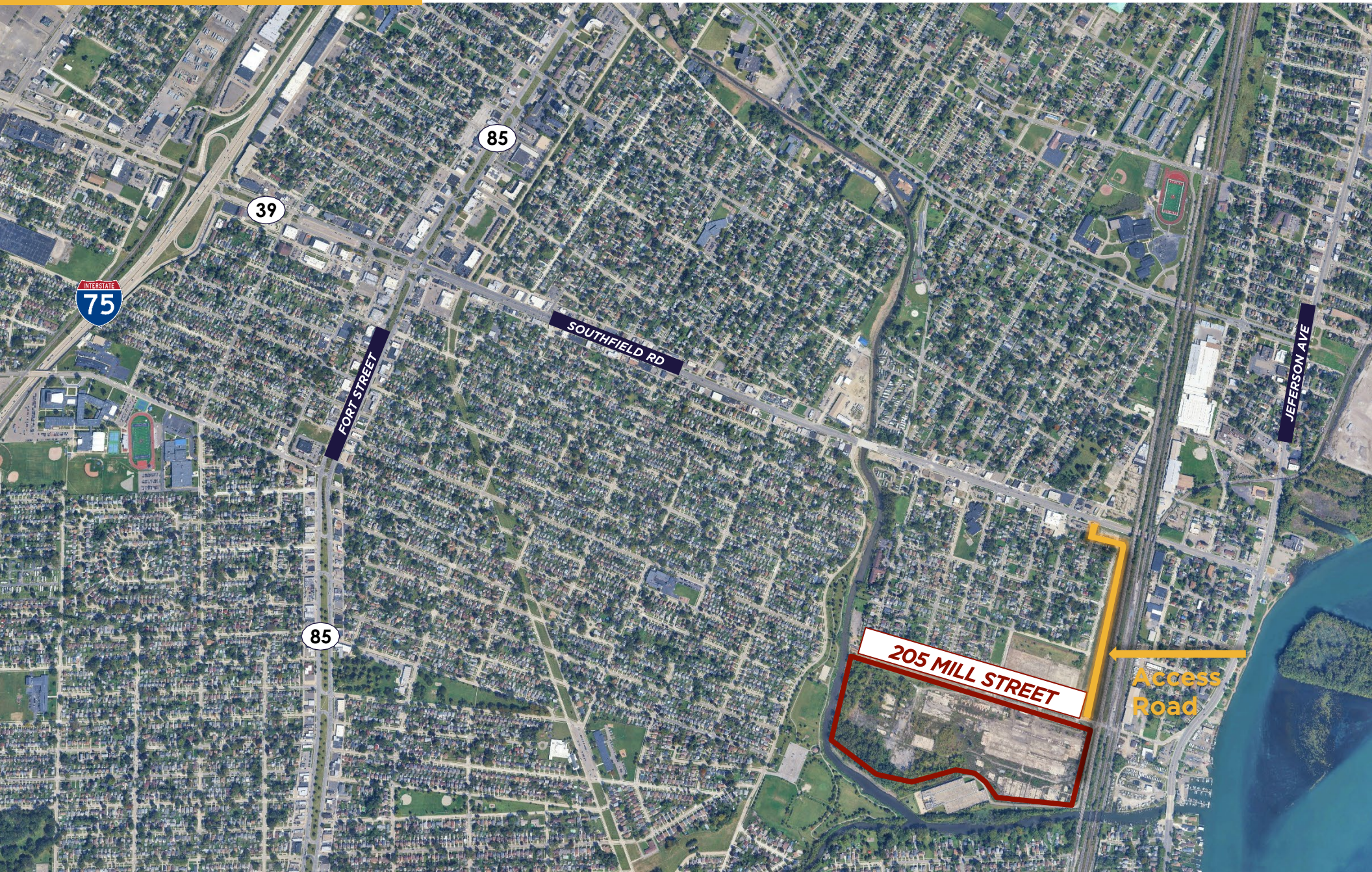


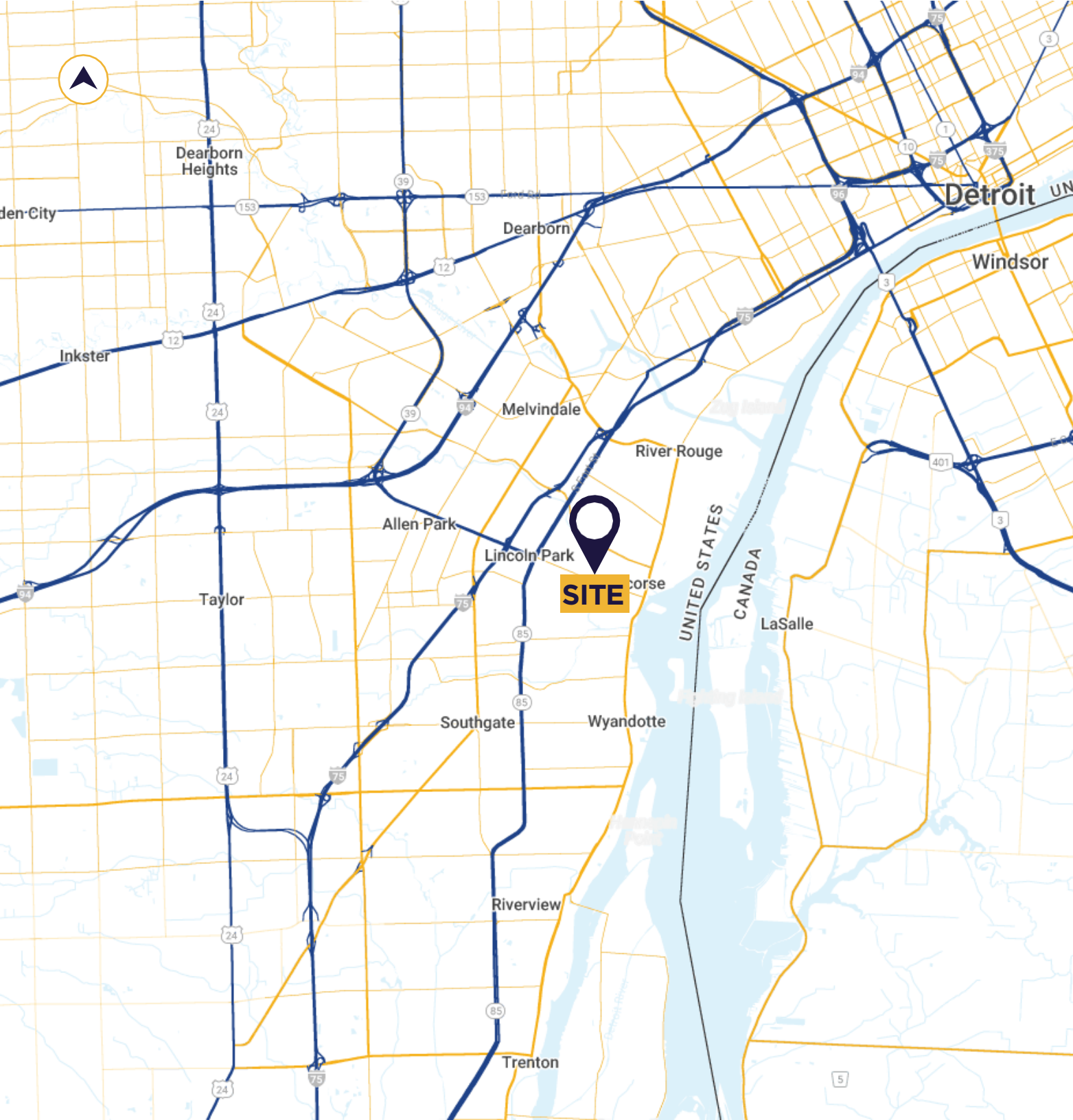
PHOTOS



AERIAL LOCATION

205 MILL STREET | ECORSE, MI





2 MILES
TO INTERSTATE 75

13 MILES
TO DETROIT

10 MILES
TO AMBASSADOR BRIDGE

6 MILES
TO GORDIE HOWE BRIDGE

73 MILES
TO BLUE WATER BRIDGE

14 MILES
TO WINDSOR, CA

50 MILES
TO TOLEDO, OH

A DRIVING WORKFORCE

Wayne County is located in Southeast Michigan.

DEMOGRAPHICS 2024 ESTIMATED



1,528,128
POPULATION



621,594
LABOR FORCE



6.7%
UNEMPLOYMENT RATE



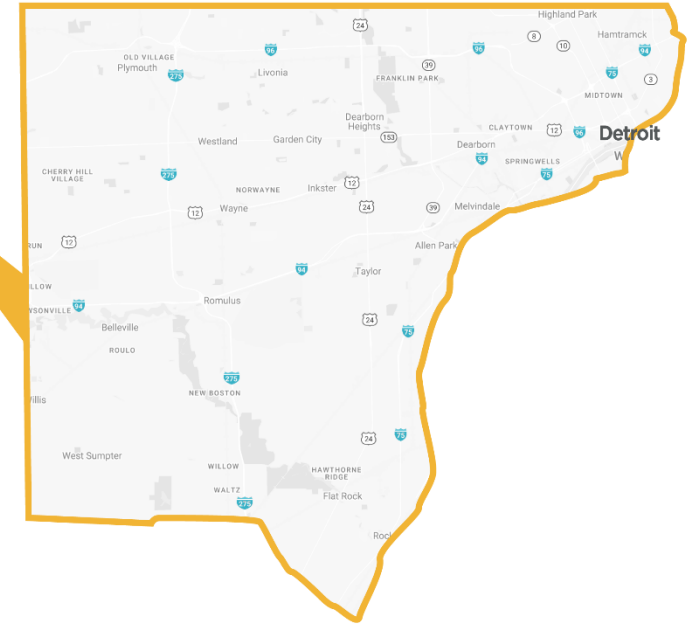
\$51,489
MEDIAN HOUSEHOLD INCOME



\$141,862
MEDIAN HOME VALUE



44,019
TOTAL BUSINESSES



SCHOOLS

- University of Michigan
- Wayne State University
- Central Michigan University
- Detroit Mercy Law
- Wayne County Community College
- Henry Ford College
- Dorsey College - Dearborn
- College for Creative Studies
- Schoolcraft Community College
- Oakland Community College



EDUCATION

Bachelor Degree: 22%
High School Diploma: 33%

FOR SALE

205 MILL STREET



CONTACT INFORMATION

TONY AVENDT
Executive Director
+1 248 358 6115
tony.avendt@cushwake.com

CONNER SALSBERY
Director
+1 248 358 6114
conner.salsberry@cushwake.com



©2025 Cushman & Wakefield. All rights reserved. The information contained in this communication is strictly confidential. This information has been obtained from sources believed to be reliable but has not been verified. NO WARRANTY OR REPRESENTATION, EXPRESS OR IMPLIED, IS MADE AS TO THE CONDITION OF THE PROPERTY (OR PROPERTIES) REFERENCED HEREIN OR AS TO THE ACCURACY OR COMPLETENESS OF THE INFORMATION CONTAINED HEREIN, AND SAME IS SUBMITTED SUBJECT TO ERRORS, OMISSIONS, CHANGE OF PRICE, RENTAL OR OTHER CONDITIONS, WITHDRAWAL WITHOUT NOTICE, AND TO ANY SPECIAL LISTING CONDITIONS IMPOSED BY THE PROPERTY OWNER(S). ANY PROJECTIONS, OPINIONS OR ESTIMATES ARE SUBJECT TO UNCERTAINTY AND DO NOT SIGNIFY CURRENT OR FUTURE PROPERTY PERFORMANCE.