

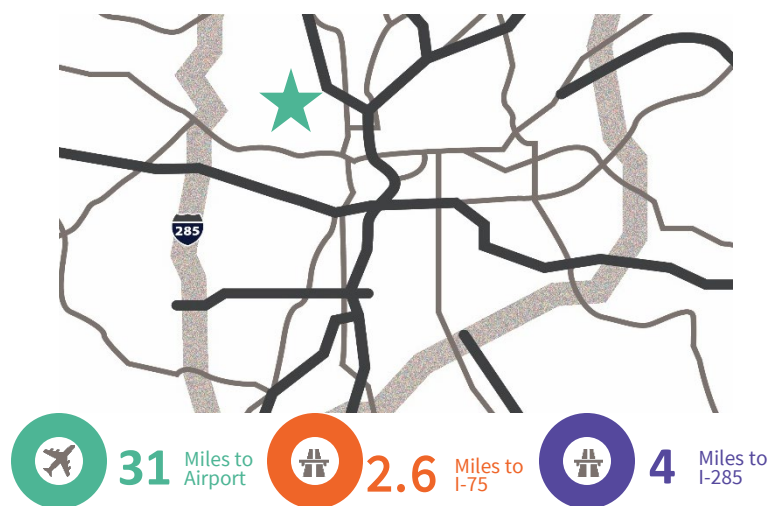


6540 Peachtree Industrial Blvd., Ste B, Norcross, GA

Opportunity

- 13,731 sf available
- 707 sf office space
- 54,700 total building size
- 22'6 clear height
- 50'8 x 39'10 bay size
- 200' Bldg. Depth
- 4 (8x10) DH, 1 DI
- Fenced outside storage

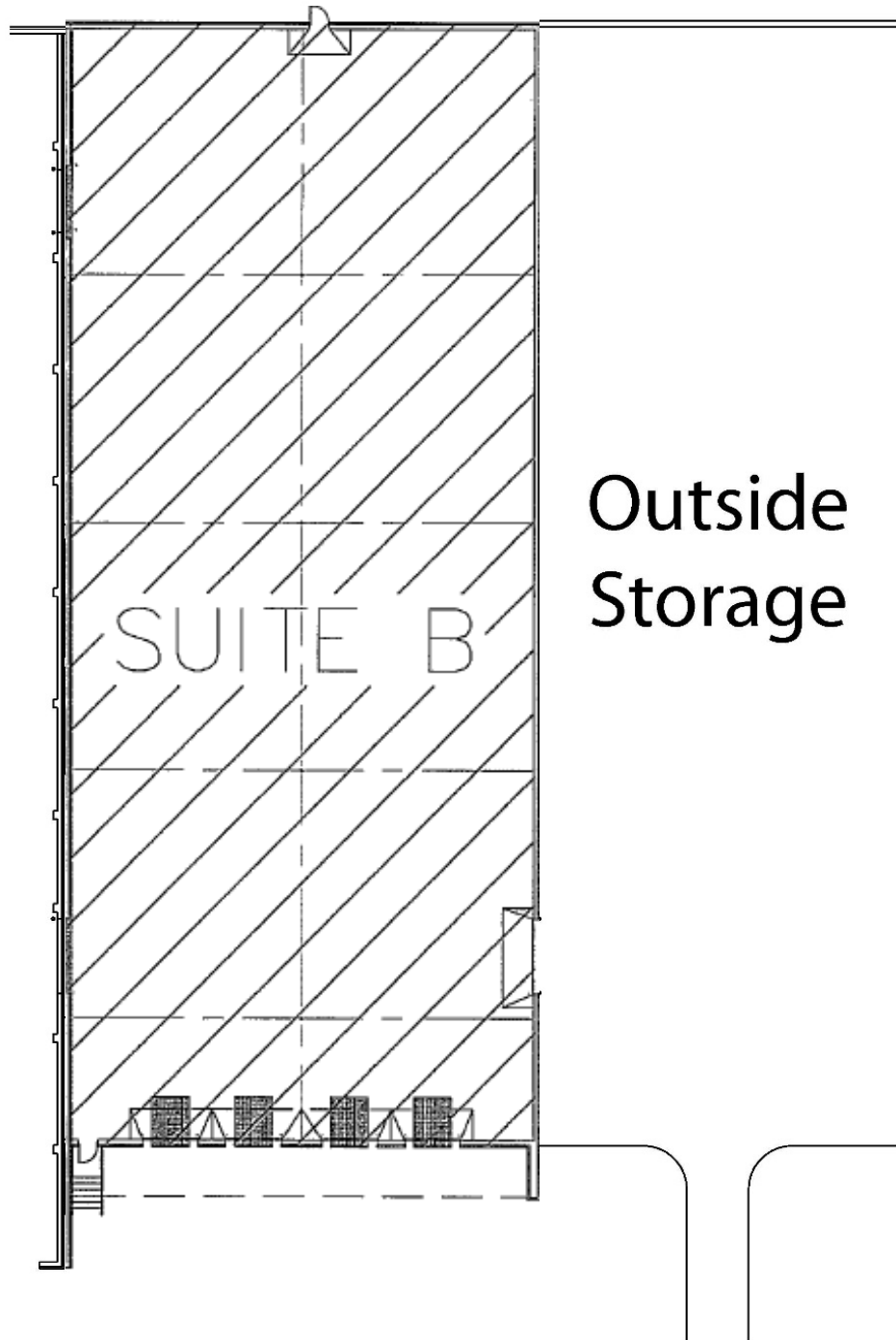
Location



For further information

Ben Parker, SIOR
ben.parker@avisonyoung.com
+1 404 409 5678

Benjamin Yim
benjamin.yim@avisonyoung.com
+1 678 777 0275



For further information

Owned by:



Ben Parker, SIOR
ben.parker@avisonyoung.com
+1 404 409 5678

Benjamin Yim
benjamin.yim@avisonyoung.com
+1 678 777 0275

