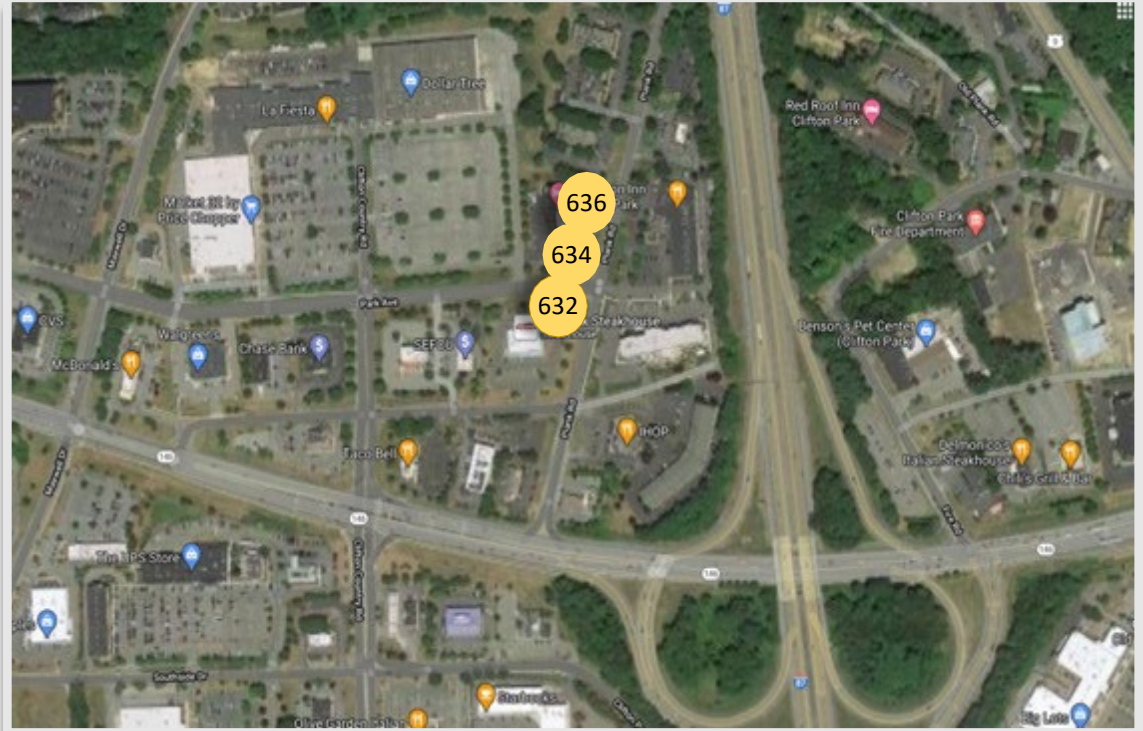


632, 634, 636 Plank Road, Clifton Park

- ✓ For Lease
- ✓ Professional Office Suites
- ✓ Various Sizes Available



Calculations, photos and data presented are deemed to be accurate, but not guaranteed and are intended for the purpose of illustrative projections and analysis. Information provided is not intended to replace or serve as substitute for any legal, accounting, investment, real estate, tax or other professional advice, consultation or service. The user of this information should consult with a professional in the respective legal, accounting, tax or other professional area before making any decisions.

THE RICHER TEAM AT



20 AVIATION ROAD, ALBANY NY 12205
TheRicherTeam@HannaCRE.com



JESSICA L. RICHER
Licensed Associate RE Broker
518-346-7406 cell
JessicaRicher@HannaCRE.com

TRACY A. MURRAY
Licensed RE Salesperson
518-694-1261 cell
TracyMurray@HannaCRE.com

632, 634, 636 Plank Road, Clifton Park

Available offices for Lease

Address	Suite #	USF	Common		Mo Rent	Est Net		Note
			Area	RSF		Expense		
632 Plank Rd	203	1,080	184	1,264	\$ 1,300	\$ 245		
634 Plank Rd	106-107-108	2,675	455	3,130	\$ 3,600	\$ 603		SUBDIVIDABLE
	106	1,156	197	1,353	\$ 1,800	\$ 288		SUBDIVIDABLE
	107-108	1,519	258	1,777	\$ 1,800	\$ 315		SUBDIVIDABLE
636 Plank Rd	109	731	124	855	\$ 950	158		

All leasing expense includes Rent + Net payment
Net payment includes; Gas/electric, heat/cooling, CAM, increase over base

Tenant responsible for cleaning space, internet and phone services

Calculations, photos and data presented are deemed to be accurate, but not guaranteed and are intended for the purpose of illustrative projections and analysis. Information provided is not intended to replace or serve as substitute for any legal, accounting, investment, real estate, tax or other professional advice, consultation or service. The user of this information should consult with a professional in the respective legal, accounting, tax or other professional area before making any decisions.

THE RICHER TEAM AT



20 AVIATION ROAD, ALBANY NY 12205
 TheRicherTeam@HannaCRE.com



JESSICA L. RICHER

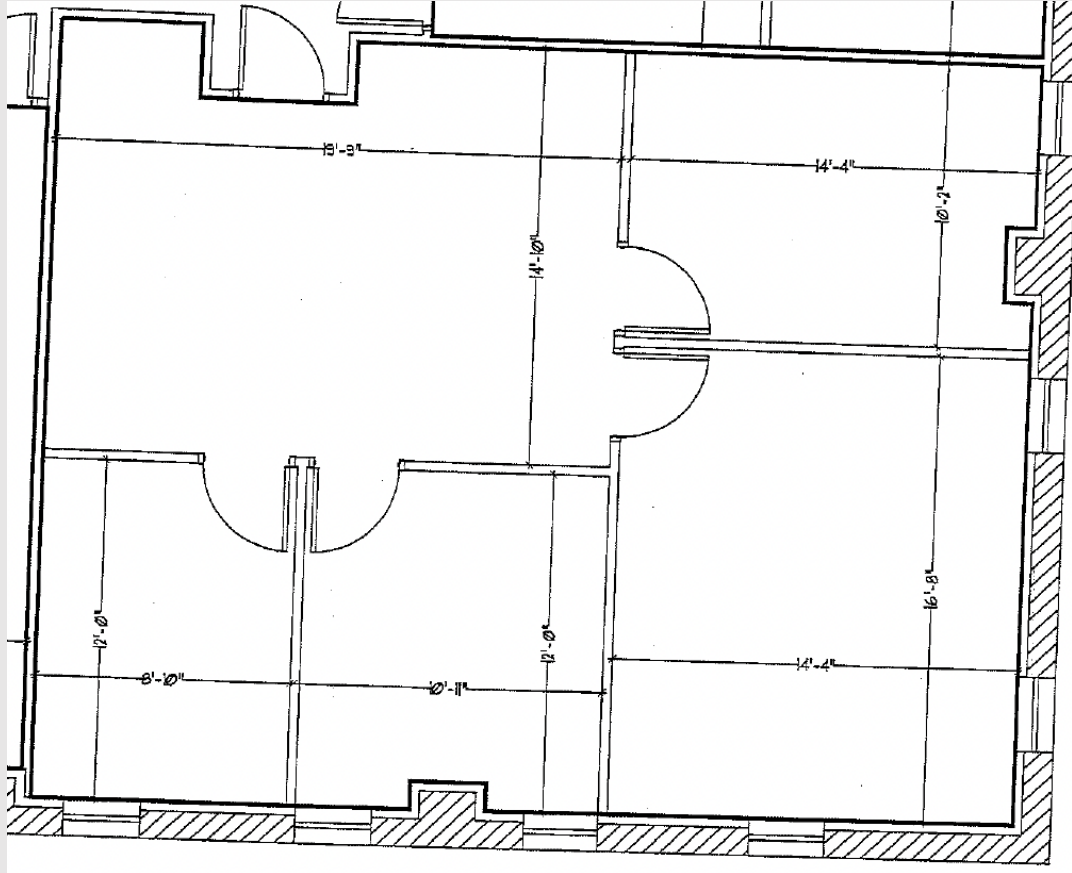
Licensed Associate RE Broker
 518-346-7406 cell
 JessicaRicher@HannaCRE.com

TRACY A. MURRAY

Licensed RE Salesperson
 518-694-1261 cell
 TracyMurray@HannaCRE.com

632 Plank Road, Clifton Park

SUITE 203 – 1,080 USF
4 Private Offices, Reception/Bull-Pen



Calculations, photos and data presented are deemed to be accurate, but not guaranteed and are intended for the purpose of illustrative projections and analysis. Information provided is not intended to replace or serve as substitute for any legal, accounting, investment, real estate, tax or other professional advice, consultation or service. The user of this information should consult with a professional in the respective legal, accounting, tax or other professional area before making any decisions.

THE RICHER TEAM AT



20 AVIATION ROAD, ALBANY NY 12205

TheRicherTeam@HannaCRE.com



JESSICA L. RICHER

Licensed Associate RE Broker

518-346-7406 cell

JessicaRicher@HannaCRE.com

TRACY A. MURRAY

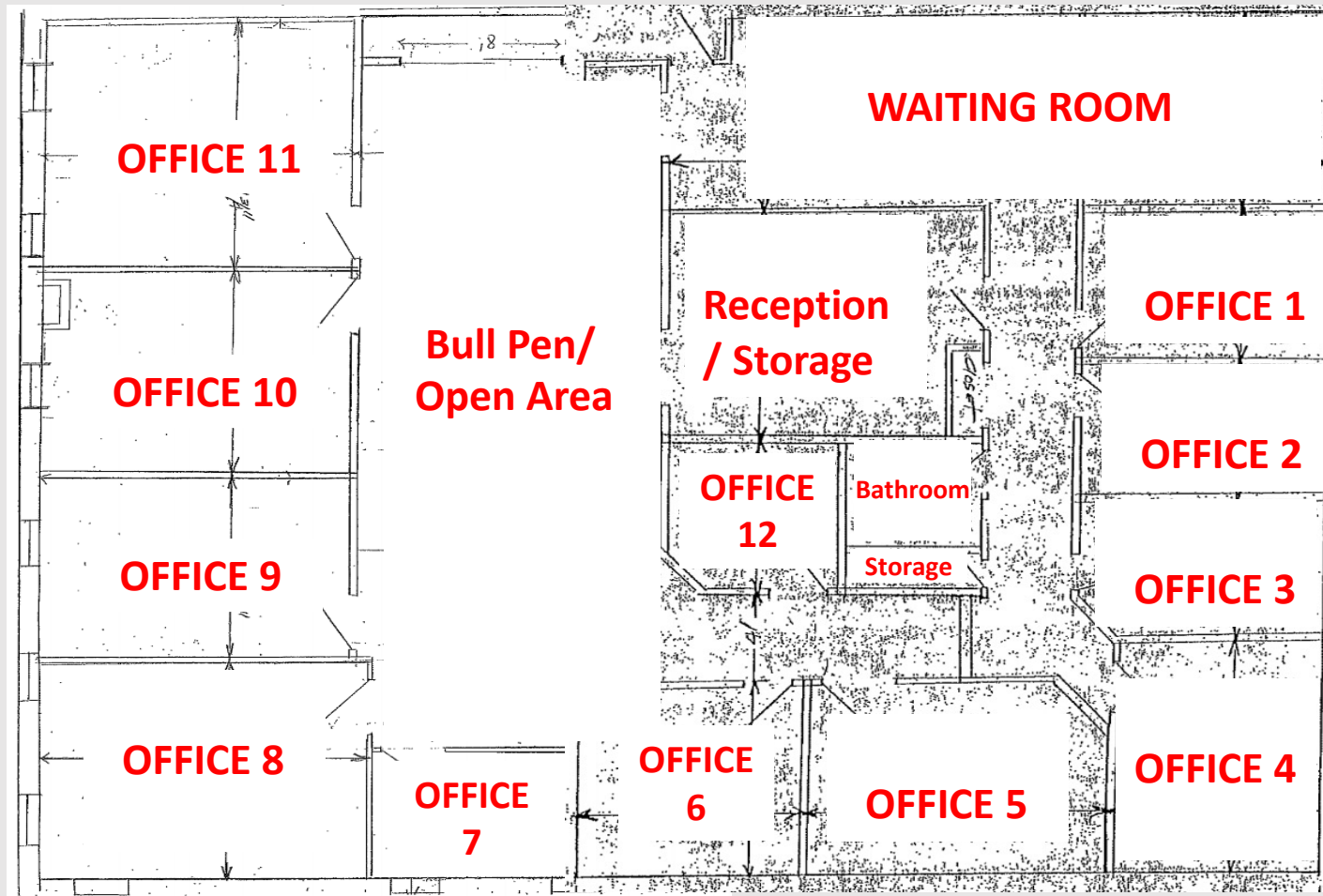
Licensed RE Salesperson

518-694-1261 cell

TracyMurray@HannaCRE.com

634 Plank Road, Clifton Park

SUITE 106 – 107 -108 **THIS SUITE IS CURRENT ADJOINING BUT IS SUBDIVIDABLE, See " Available offices for Lease"**
12 Private Offices, 1 Bathroom, 2-Window Reception, Waiting room, Bull Pen, Storage



Calculations, photos and data presented are deemed to be accurate, but not guaranteed and are intended for the purpose of illustrative projections and analysis. Information provided is not intended to replace or serve as substitute for any legal, accounting, investment, real estate, tax or other professional advice, consultation or service. The user of this information should consult with a professional in the respective legal, accounting, tax or other professional area before making any decisions.

THE RICHER TEAM AT



20 AVIATION ROAD, ALBANY NY 12205
TheRicherTeam@HannaCRE.com



JESSICA L. RICHER

Licensed Associate RE Broker
518-346-7406 cell
JessicaRicher@HannaCRE.com

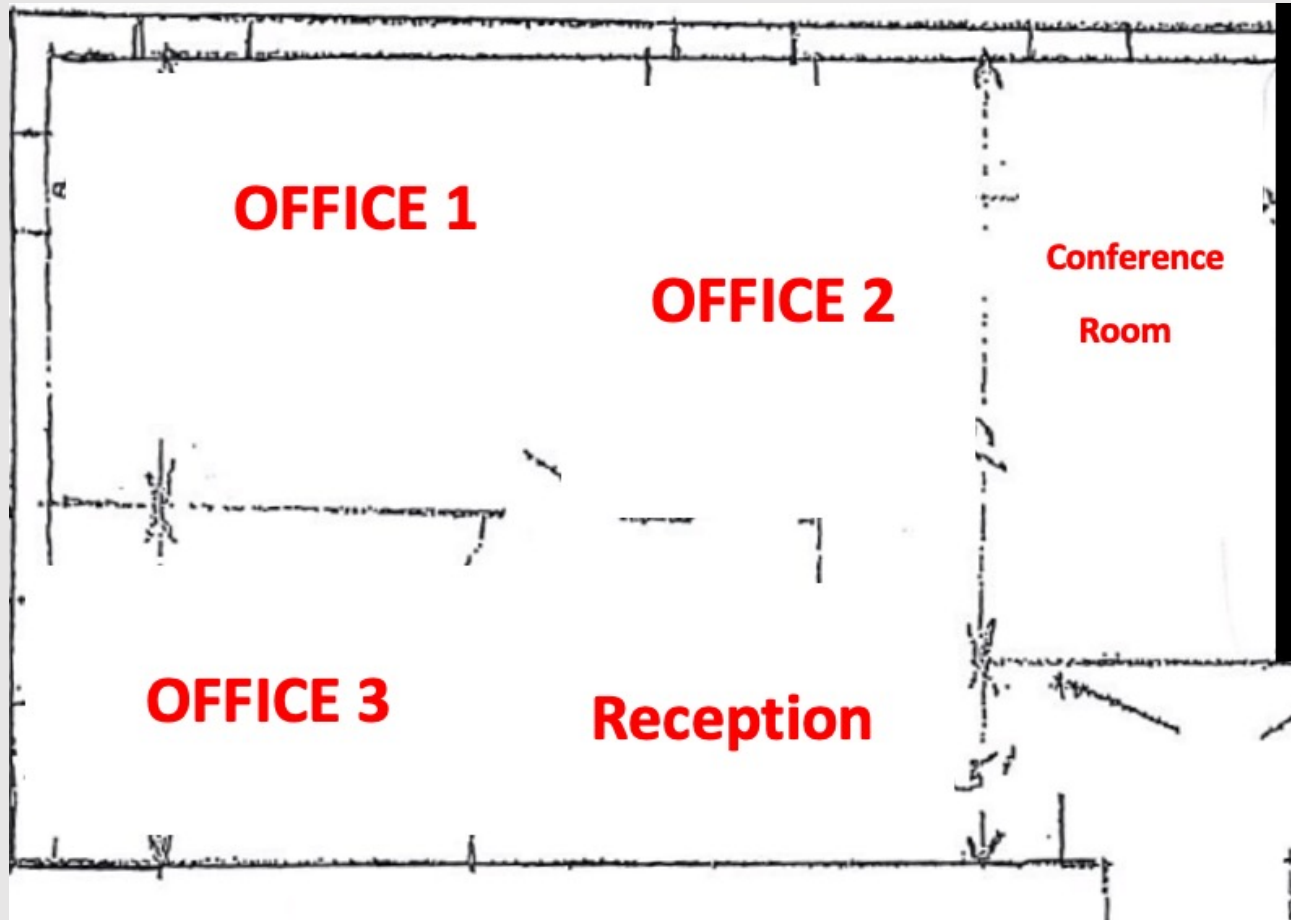
TRACY A. MURRAY

Licensed RE Salesperson
518-694-1261 cell
TracyMurray@HannaCRE.com

636 Plank Road, Clifton Park

SUITE 109 – 710 USF

3 Private Offices + Conference Room + Reception



Calculations, photos and data presented are deemed to be accurate, but not guaranteed and are intended for the purpose of illustrative projections and analysis. Information provided is not intended to replace or serve as substitute for any legal, accounting, investment, real estate, tax or other professional advice, consultation or service. The user of this information should consult with a professional in the respective legal, accounting, tax or other professional area before making any decisions.

THE RICHER TEAM AT



20 AVIATION ROAD, ALBANY NY 12205

TheRicherTeam@HannaCRE.com



JESSICA L. RICHER

Licensed Associate RE Broker

518-346-7406 cell

JessicaRicher@HannaCRE.com

TRACY A. MURRAY

Licensed RE Salesperson

518-694-1261 cell

TracyMurray@HannaCRE.com