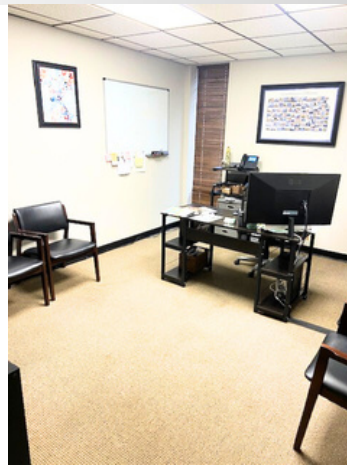
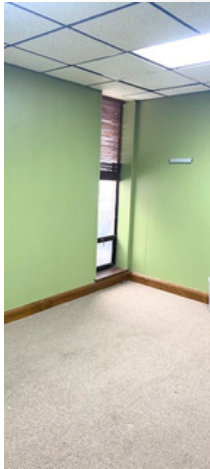


OFFICE SPACE FOR LEASE

748 ANN AVE, KANSAS CITY, KS 66101



PROPERTY HIGHLIGHTS

- Nicely maintained professional office building
- Directly adjacent to Kansas City, Kansas Municipal Court
- Close to Kansas City, Kansas City Hall
- Tenant mix is currently 100% Attorneys

OFFERING SUMMARY

BUILDING SIZE: 5,360 SF

AVAILABLE: 2 Offices approx. 180 sq. ft each

MONTHLY LEASE RATE: \$600 which includes Janitorial, Telephone if needed, Use of Break Room, Conference Room, and Copy Machine



PAUL BYERS

c: 913.909.9700

e: byerscommercial@gmail.com



Byers Commercial

