

**±8,885 SF AVAILABLE**

1511 S Vineyard Avenue, Ontario, CA

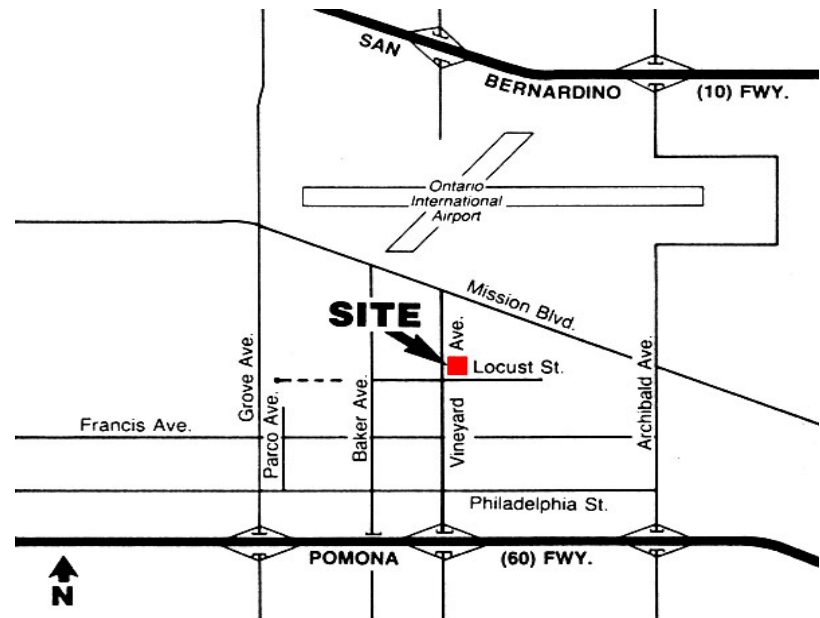
# AVAILABLE FOR SUBLEASE, or new lease with Landlord



**1511 S. Vineyard Ave., Ontario, CA**

## Features:

- Skylights, Lighting, Foil Insulation
- Approx. 2,000 SF of Office with large bullpen/showroom, 3 privates, 2 restrooms
- 16' - 18' Ceiling Height
- Fire Sprinklered; .33 gpm/3000 sf
- 2 Ground Level Loading Doors:  
(1) 12' x 12'H & (1) 12' x 14'H
- Vineyard Frontage and Signage
- 400 AMPs, 277/480 Volts, 3 ph., 4 wire with heavy distribution



For More information, call:

**Mark McErlean**

**909-945-4595**

[markm@delmar1.com](mailto:markm@delmar1.com)  
dre# 00797726

**Dave McErlean**

**909-660-3548**

[davem@delmar1.com](mailto:davem@delmar1.com)  
dre# 01920898

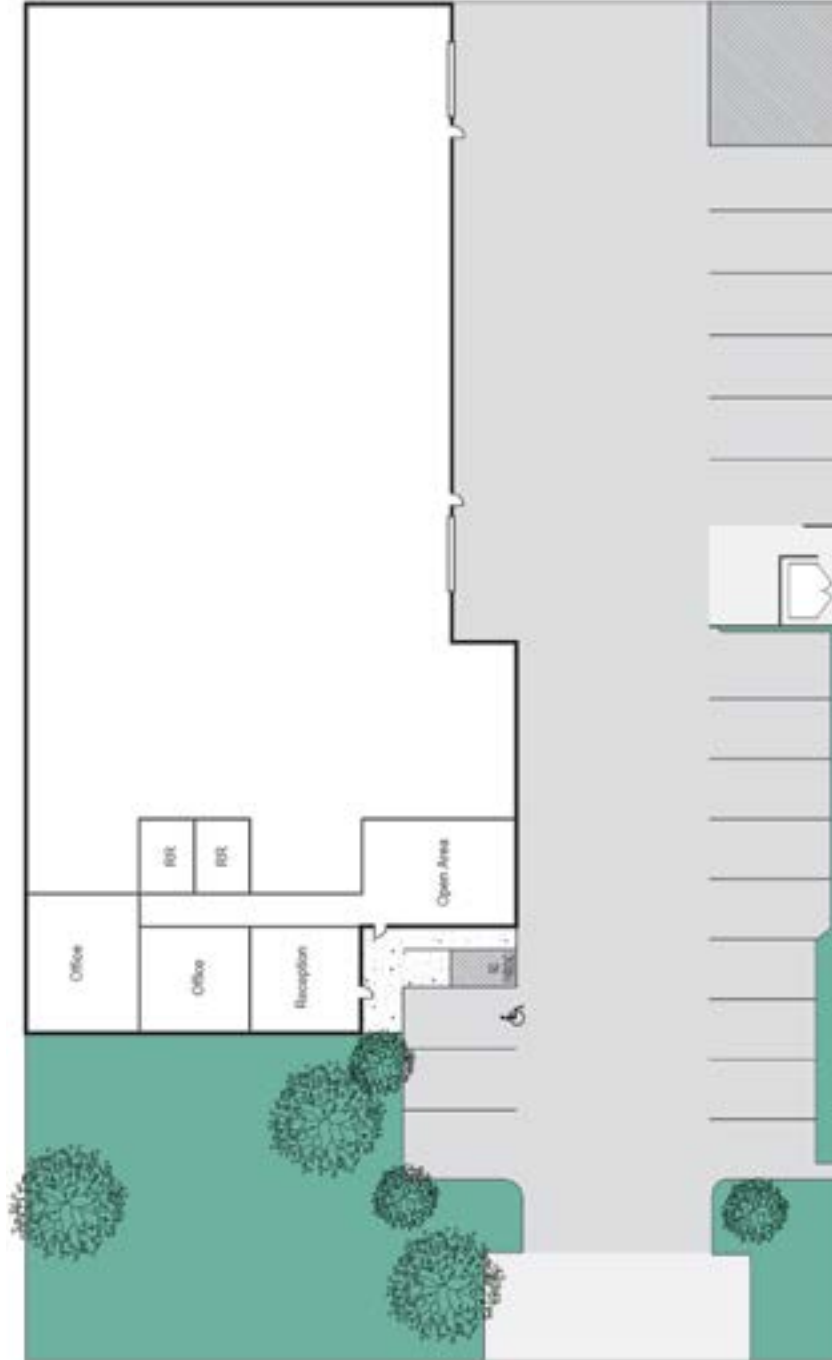


**±8,885 SF AVAILABLE**

1511 S Vineyard Avenue, Ontario, CA

# AVAILABLE FOR SUBLEASE, or new lease with Landlord

## FLOOR PLAN



VINEYARD AVE