



134,169 SF
SPACE FOR LEASE

1376 WEST 2600 SOUTH
WOODS CROSS, UTAH 84087

WOODS CROSS COMMERCE CENTER

CBRE

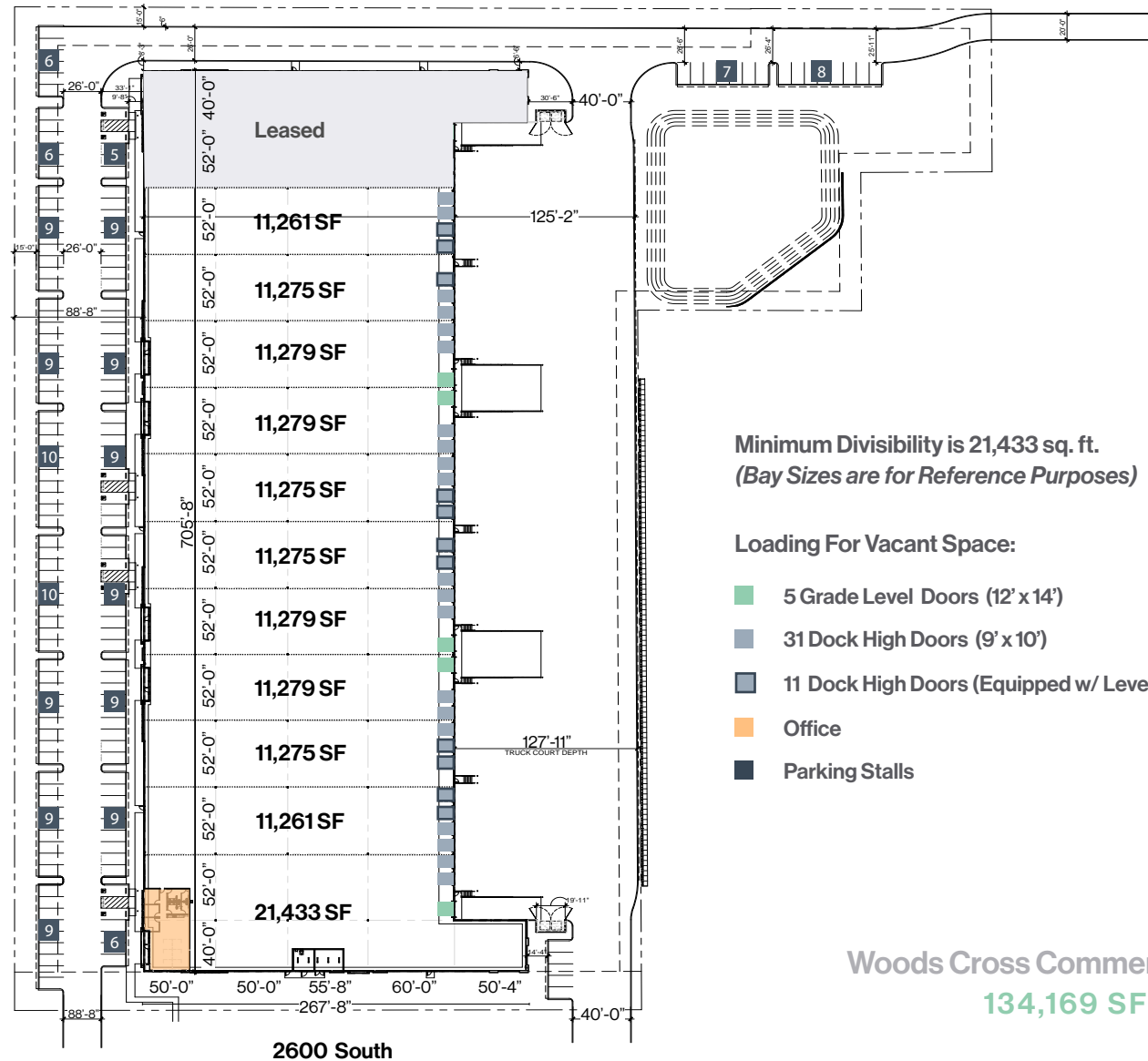
 **PHELAN**
DEVELOPMENT

BUILDING SPECIFICATIONS

Building Size	156,234 sq. ft.
Available	134,169 sq. ft.
Office	1,960 sq. ft.
Divisible to	21,433 sq. ft. (Two Bay Minimum)
Configuration	Rear Load
Dock High Doors	31 (9'x10') Equipped with Bumpers. (11 Equipped with 35,000 lb. Mechanical Hydraulic Pit Levelers with Weather Shields)
Grade Level Doors	5 (12'x14')
Clear Height	32'
Zoning	I-2, Industrial
Power	3,000 Amp, 480/277 Volt, 3 Phase
Dimensions	705'8" Width x 215'6" Depth
Column Spacing	50' x 52'
Staging Area	60' x 52'
Truck Court	125'2" – 127'11"
Auto Parking	162 Total Stalls (1.03 / 1000 Parking Ratio)
Fire Suppression	ESFR
Lighting	LED in Warehouse



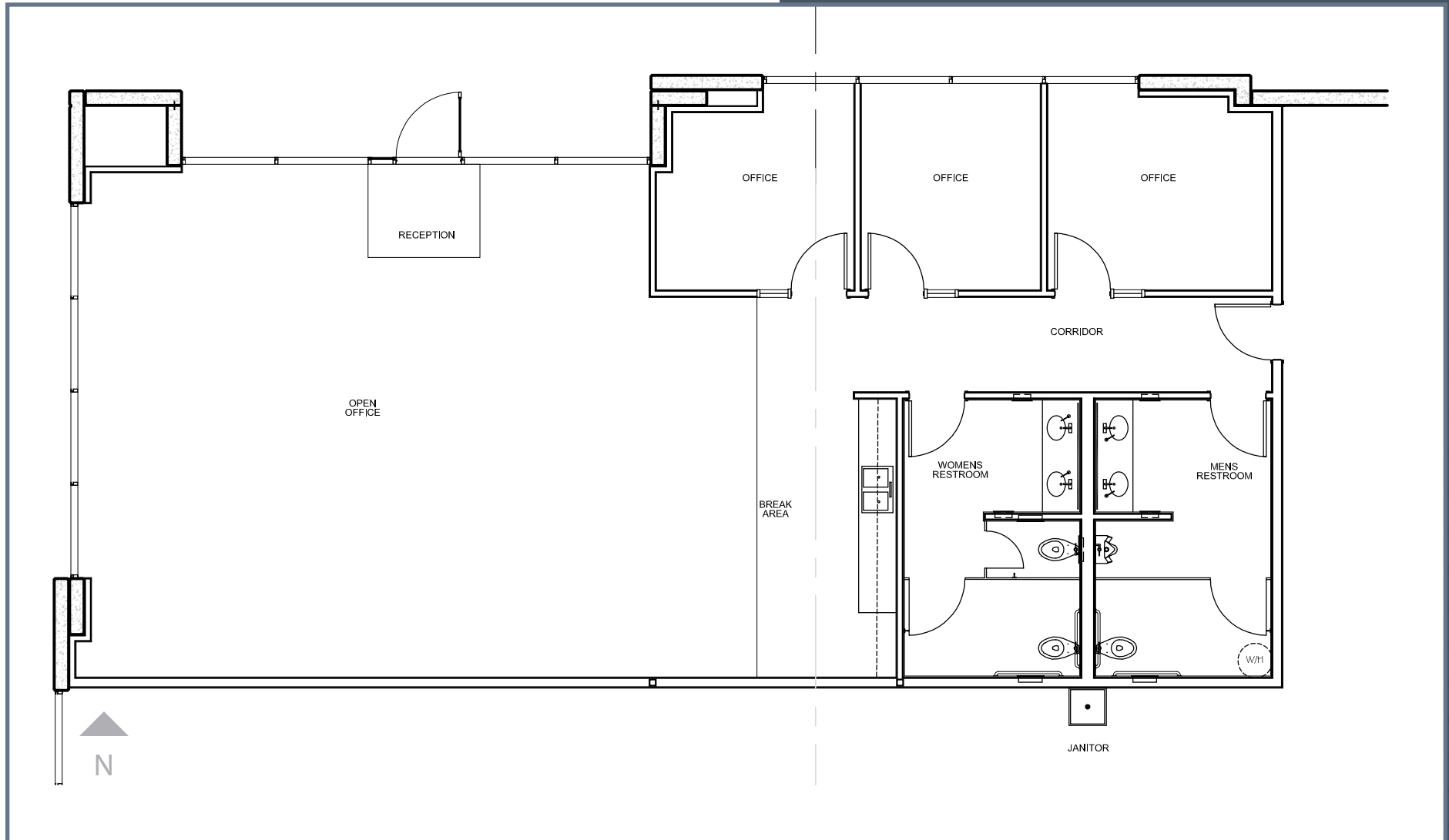
SITE PLAN



OFFICE PLAN

Woods Cross Commerce Center

1,960 SF





PROPERTY PHOTOS —

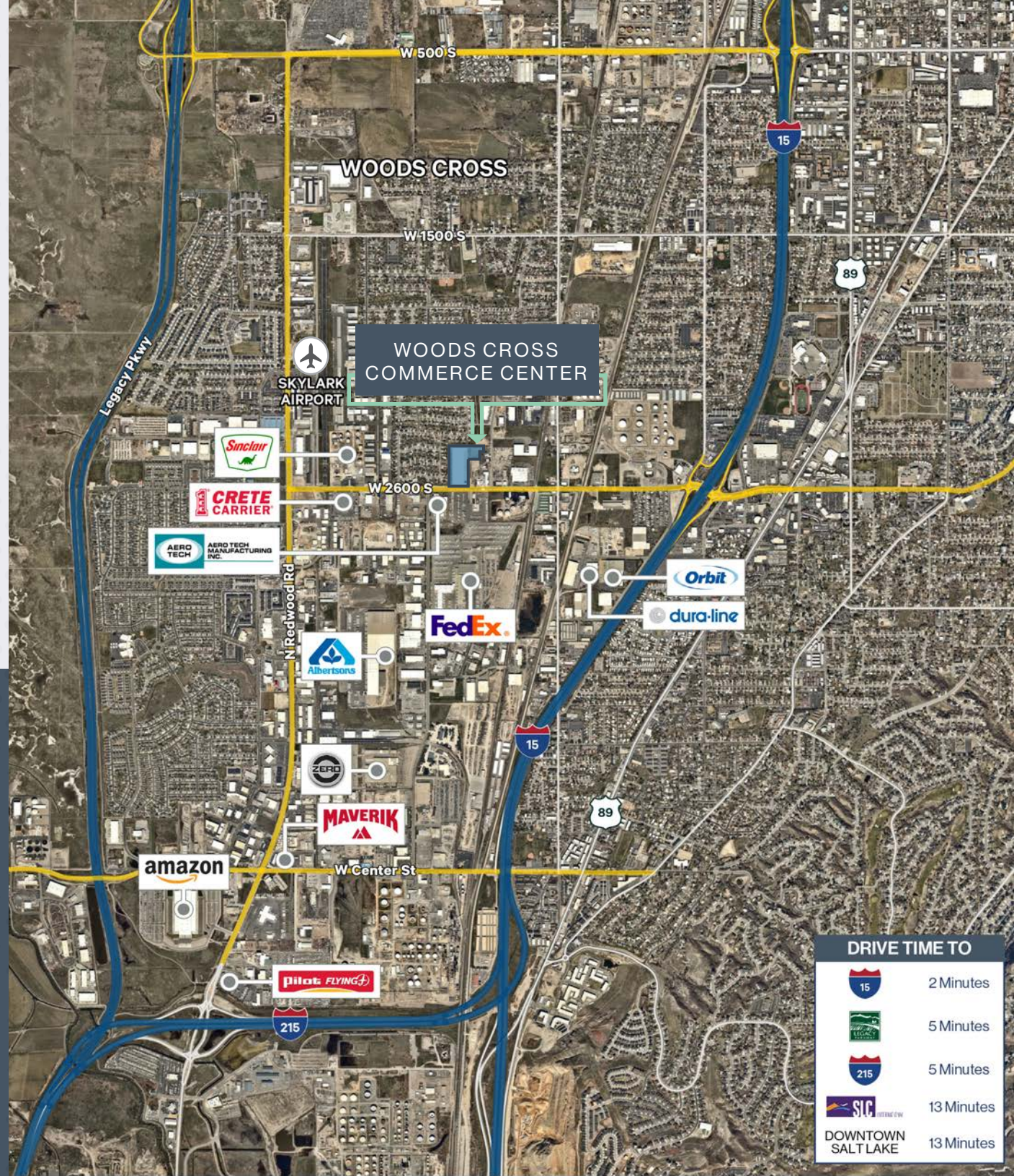


PROPERTY PHOTOS



134,169 SF
AVAILABLE

AERIAL MAP



DRIVE TIME TO

	2 Minutes
	5 Minutes
	5 Minutes
	13 Minutes
DOWNTOWN SALT LAKE	13 Minutes

1376 WEST 2600 SOUTH
WOODS CROSS, UTAH 84087

134,169 SF
SPACE FOR LEASE

WOODS CROSS COMMERCE CENTER



MATT MCAFEE
Senior Vice President
+1801869 8023
matt.mcafee@cbre.com

CHRIS LIDDELL
Senior Vice President
+1801869 8007
chris.liddell@cbre.com

TOM DISCHMANN
Executive Vice President
+1801243 9411
tom.dischmann@cbre.com

JEFF RICHARDS
Executive Vice President
+1801869 8026
jeff.richards@cbre.com



© 2025 CBRE, Inc. All rights reserved. This information has been obtained from sources believed reliable but has not been verified for accuracy or completeness. CBRE, Inc. makes no guarantee, representation or warranty and accepts no responsibility or liability as to the accuracy, completeness, or reliability of the information contained herein. You should conduct a careful, independent investigation of the property and verify all information. Any reliance on this information is solely at your own risk.