



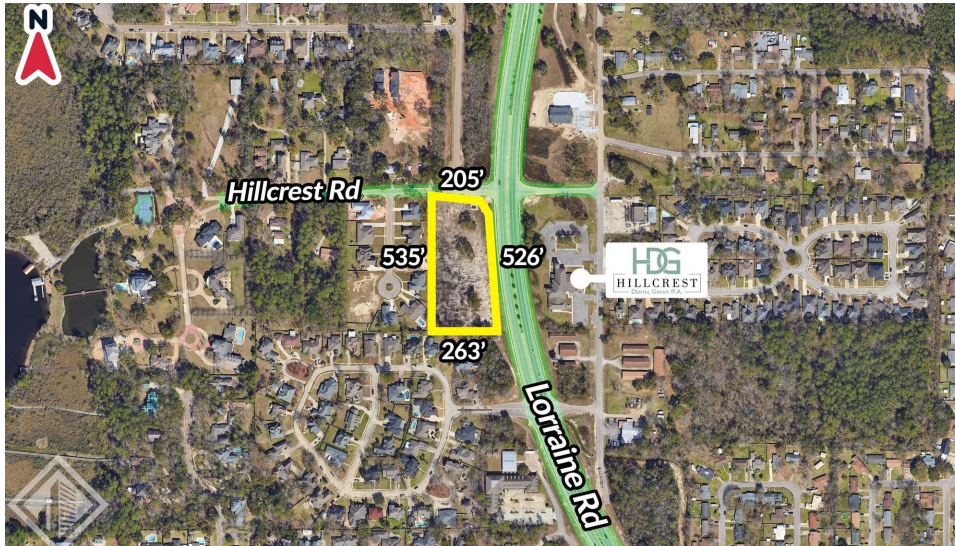
# 2.83 ACRES ON LORRAINE ROAD

11451 Hillcrest Rd, Gulfport, MS 39503

526

TIM CARLSON • PRINCIPAL  
OFFICE: 228.276.2700  
MOBILE: 228.547.0707  
tcarlson@southeastcre.com

MONTE LUFFEY • PRINCIPAL  
OFFICE: 228.276.2700  
MOBILE: 228.547.1953  
mluffey@southeastcre.com



## PROPERTY DESCRIPTION

Southeast Commercial is proud to present a prime 2.83-acre parcel of land for sale on Lorraine Road in Gulfport. This versatile property is zoned for both residential and office use, offering a range of development possibilities. With its high-traffic and visibility, this land is perfectly positioned. Whether you're looking to build a small community or develop professional office space, this property is a great opportunity to secure a valuable piece of Gulfport real estate!

## OFFERING SUMMARY

Sale Price:	\$1,050,000
Lot Size:	2.83 Acres

DEMOGRAPHICS	0.3 MILES	0.5 MILES	1 MILE
Total Households	92	398	1,146
Total Population	267	1,122	3,101
Average HH Income	\$181,442	\$167,928	\$159,413

LAND FOR SALE

PROPERTY SUMMARY



SOUTHEAST  
COMMERCIAL  
REAL ESTATE



# 2.83 ACRES ON LORRAINE ROAD

11451 Hillcrest Rd, Gulfport, MS 39503

526'

TIM CARLSON • PRINCIPAL

OFFICE: 228.276.2700

MOBILE: 228.547.0707

tcarlson@southeastcre.com

MONTE LUFFEY • PRINCIPAL

OFFICE: 228.276.2700

MOBILE: 228.547.1953

mluffey@southeastcre.com



LAND FOR SALE

ADDITIONAL PHOTOS





# 2.83 ACRES ON LORRAINE ROAD

11451 Hillcrest Rd, Gulfport, MS 39503

526'

TIM CARLSON • PRINCIPAL

OFFICE: 228.276.2700

MOBILE: 228.547.0707

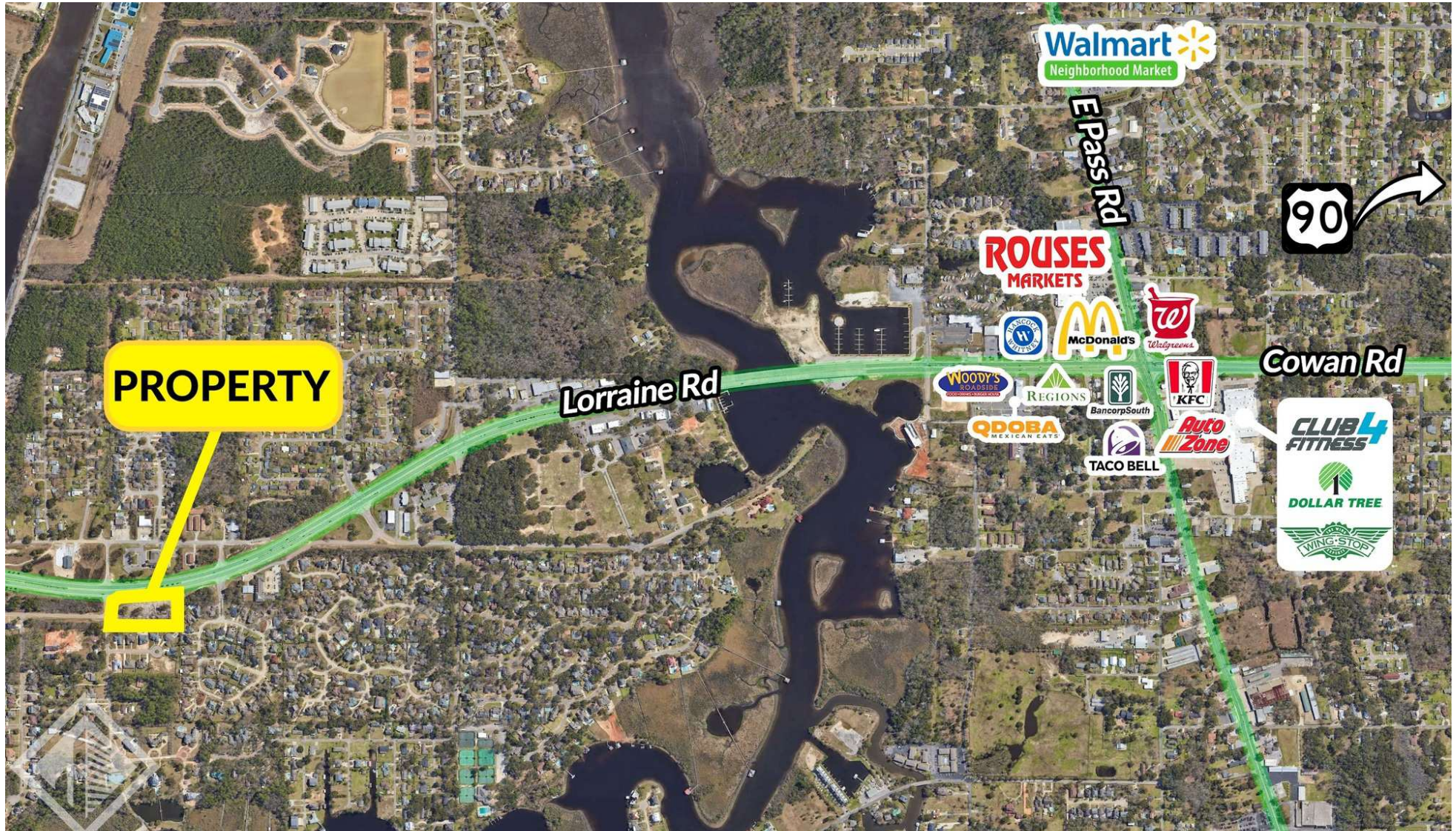
tcarlson@southeastcre.com

MONTE LUFFEY • PRINCIPAL

OFFICE: 228.276.2700

MOBILE: 228.547.1953

mluffey@southeastcre.com



LAND FOR SALE

RETAILER AERIAL



SOUTHEAST  
COMMERCIAL  
REAL ESTATE



# 2.83 ACRES ON LORRAINE ROAD

11451 Hillcrest Rd, Gulfport, MS 39503

526'

TIM CARLSON • PRINCIPAL

OFFICE: 228.276.2700

MOBILE: 228.547.0707

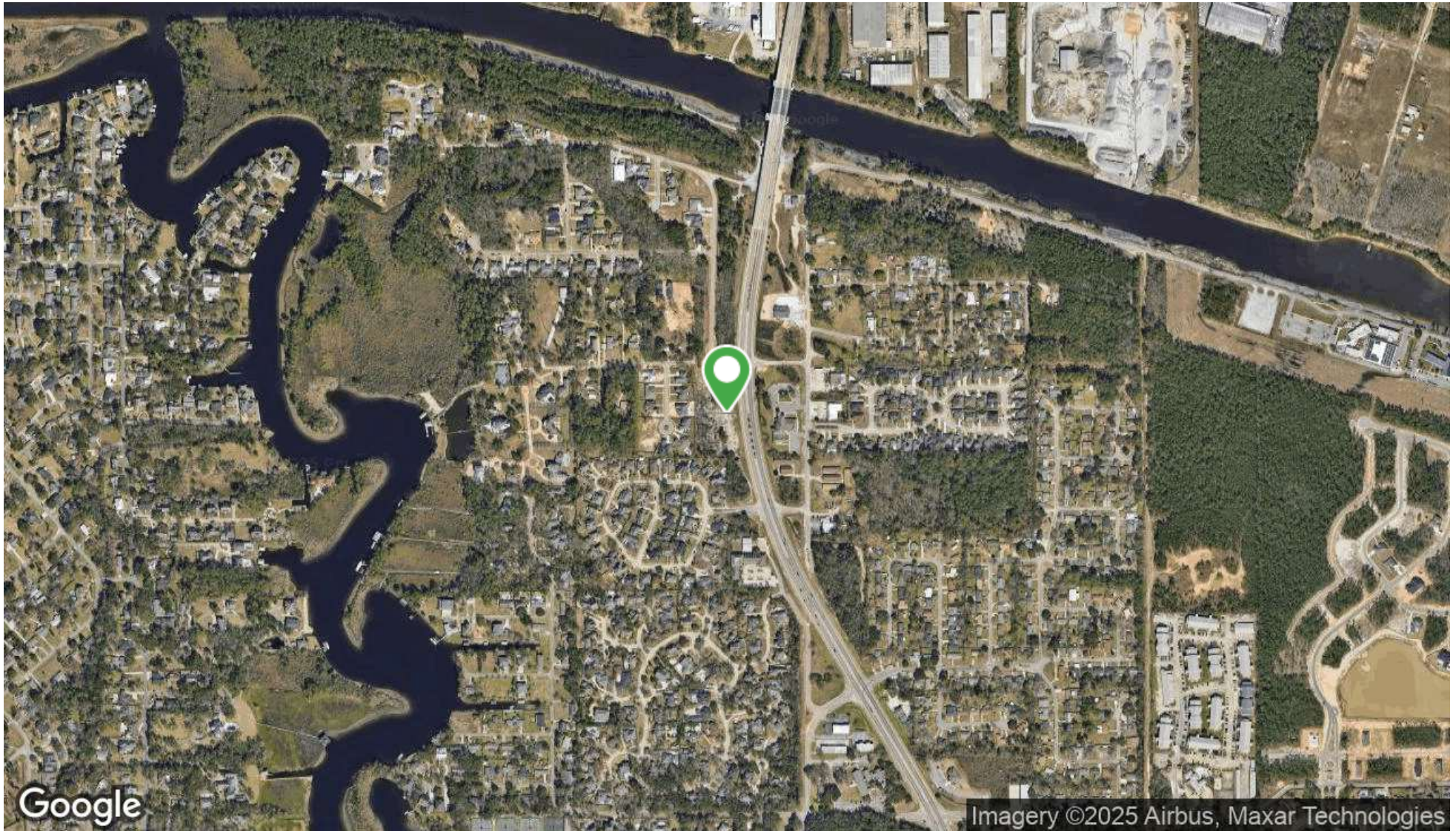
tcarlson@southeastcre.com

MONTE LUFFEY • PRINCIPAL

OFFICE: 228.276.2700

MOBILE: 228.547.1953

mluffey@southeastcre.com



LAND FOR SALE

AERIAL MAP



SOUTHEAST  
COMMERCIAL  
REAL ESTATE



# 2.83 ACRES ON LORRAINE ROAD

11451 Hillcrest Rd, Gulfport, MS 39503

526'

TIM CARLSON • PRINCIPAL

OFFICE: 228.276.2700

MOBILE: 228.547.0707

tcarlson@southeastcre.com

MONTE LUFFEY • PRINCIPAL

OFFICE: 228.276.2700

MOBILE: 228.547.1953

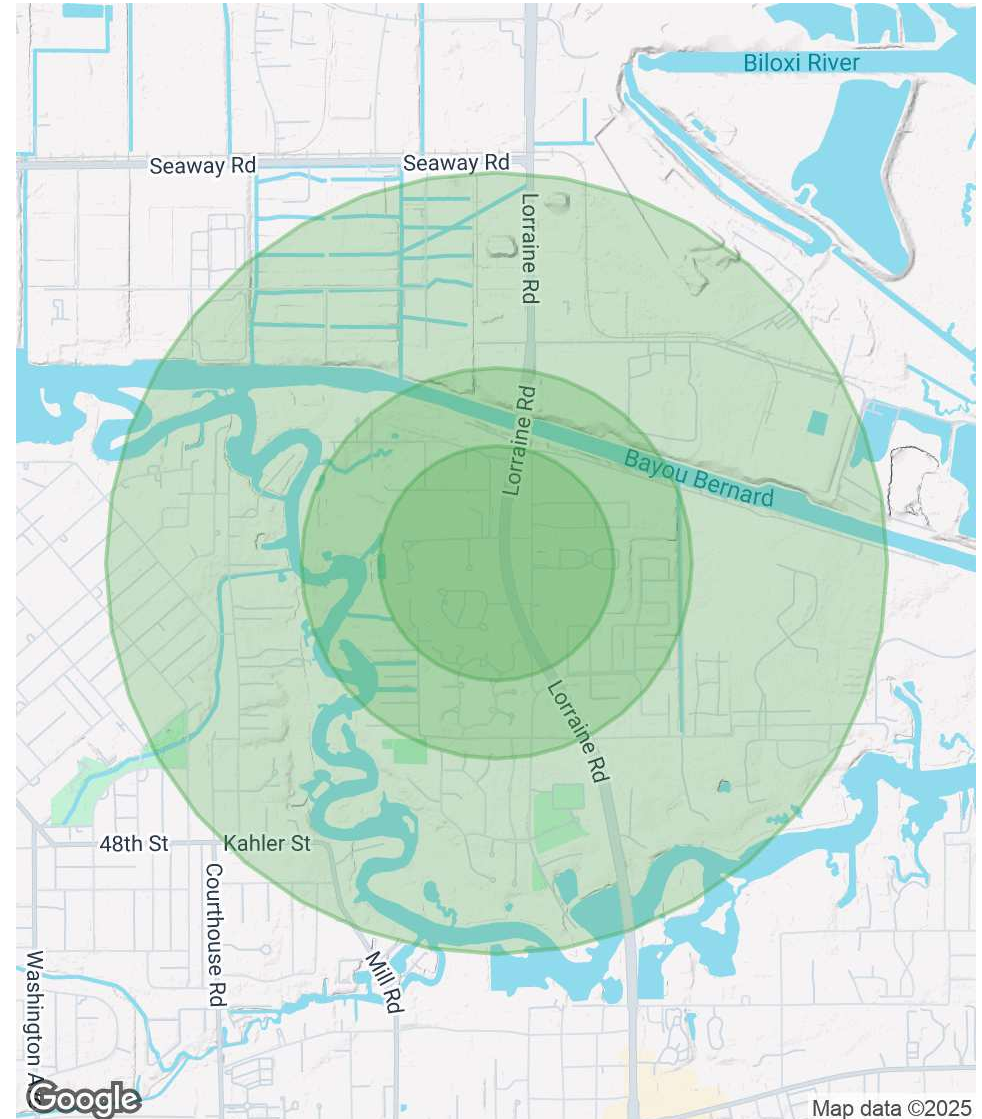
mluffey@southeastcre.com

POPULATION	0.3 MILES	0.5 MILES	1 MILE
Total Population	267	1,122	3,101
Average Age	39	39	41
Average Age (Male)	39	39	40
Average Age (Female)	39	39	41

HOUSEHOLDS & INCOME	0.3 MILES	0.5 MILES	1 MILE
Total Households	92	398	1,146
# of Persons per HH	2.9	2.8	2.7
Average HH Income	\$181,442	\$167,928	\$159,413
Average House Value	\$607,233	\$621,328	\$556,417

Demographics data derived from AlphaMap



LAND FOR SALE

DEMOGRAPHICS MAP & REPORT



SOUTHEAST  
COMMERCIAL  
REAL ESTATE