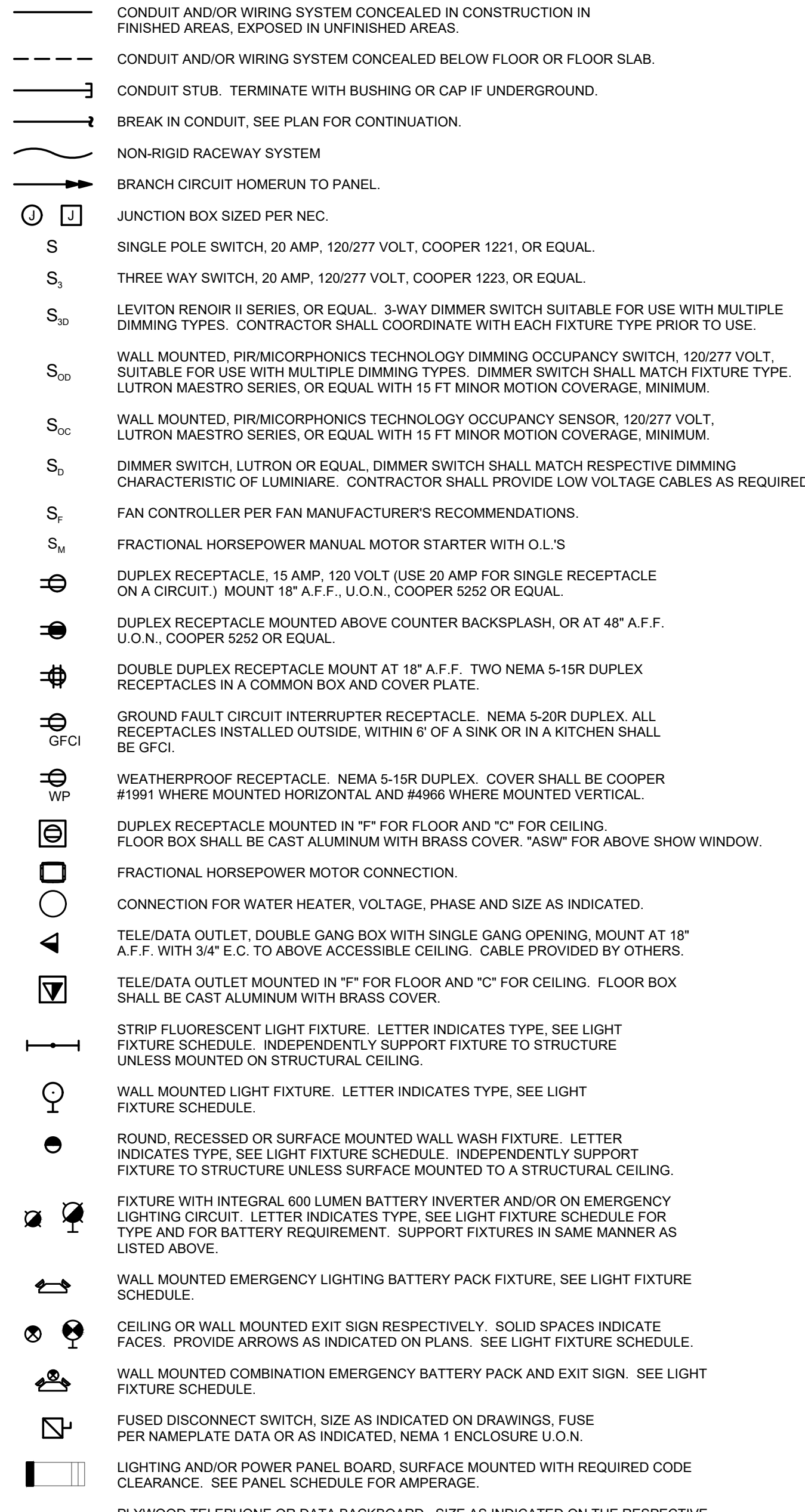


ELECTRICAL SPECIFICATIONS

PART 1: GENERAL
A. PROVIDE ALL WORK AND MATERIALS FOR THE INSTALLATION OF COMPLETE WIRING SYSTEMS AS SPECIFIED HEREIN AND INDICATED ON THE DRAWINGS.
B. ALL ELECTRICAL PERMITS AND INSPECTION FEES SHALL BE OBTAINED AND PAID FOR BY THE ELECTRICAL CONTRACTOR.
C. ELECTRICAL CONTRACTOR SHALL GUARANTEE ALL WORK AND MATERIALS FOR ONE YEAR EFFECTIVE THE DAY THE PROJECT IS ACCEPTED BY THE OWNER.
D. WORK SHALL BE IN ACCORDANCE WITH THE NATIONAL ELECTRICAL CODE, OSHA, STATE BUILDING CODE AND ALL OTHER APPLICABLE LOCAL REQUIREMENTS. ALL WORK SHALL COMPLY WITH THE LATEST ADDITION OF NECA STANDARDS OF INSTALLATION.
E. ALL MATERIALS, DEVICES, AND APPLIANCES SHALL BE NEW, EXCEPT WHERE OTHERWISE NOTED, AND SHALL BE LISTED BY AN APPROVED TESTING AGENCY WHERE SUCH A LISTING IS AVAILABLE.
F. PROVIDE ALL CUTTING, PATCHING, CHANNELING AND CHASING FOR INSTALLATION OF WORK AND REPAIR ANY DAMAGE OF EXISTING OR NEW INSTALLATIONS AT THE CONTRACTORS EXPENSE.
G. SHOP DRAWINGS AND CATALOG DATA SHALL BE SUBMITTED FOR APPROVAL PRIOR TO BEGINNING WORK.
H. PROVIDE ENGRAVED PHENOLIC NAMEPLATES FOR PANELBOARDS, WIRING TROUGHS, AND FUSED SWITCHES.
I. AN ELECTRICAL INSPECTION CERTIFICATE SHALL BE ISSUED BY THE LOCAL INSPECTION AUTHORITIES BEFORE APPROVAL FOR FINAL PAYMENT.
J. THE CONDUIT AND NEUTRAL SYSTEM SHALL BE GROUNDED AT THE MAIN SERVICE EQUIPMENT.
K. WIRING SHALL BE TESTED FOR CONTINUITY AND GROUNDS BEFORE BEING ENERGIZED.
L. IF, DURING THE COURSE OF WORK, THE ELECTRICAL CONTRACTOR DISCOVERS A PROBLEM WITH THE PERFORMANCE OF THE INSTALLATION...
M. THE ELECTRICAL CONTRACTOR SHALL CONNECT ALL EQUIPMENT REQUIRING ELECTRICAL CONNECTIONS...
N. COORDINATE LOCATION AND REQUIREMENTS FOR ELECTRICAL SERVICE WITH THE POWER COMPANY.
O. COORDINATE LOCATION AND REQUIREMENTS FOR TELEPHONE SERVICE WITH THE TELEPHONE COMPANY.
P. THE ELECTRICAL CONTRACTOR SHALL BE RESPONSIBLE FOR OBTAINING AND PROVIDING TEMPORARY POWER.
PART 2: RACEWAY
A. CONDUIT SHALL BE ZINC-COATED EMT INDOORS...
B. SUPPORT ALL CONDUITS WITH STRAPS AND CLAMPS.
C. JUNCTION AND PULL BOXES SHALL BE CODE GAUGE GALVANIZED SHEET METAL.
D. LIQUID-TIGHT FLEXIBLE METAL CONDUIT SHALL BE USED FOR EQUIPMENT CONNECTIONS...
E. MC CABLE MAY BE USED AS A WIRING METHOD WHERE ALLOWED BY CODE.
F. RACEWAY PENETRATIONS THROUGH FLOOR SLABS AND FIRE-RATED WALLS SHALL BE FILLED WITH IMPERVIOUS, NON-SHRINK GROUT...
PART 3: CONDUCTORS
A. ALL CONDUCTORS SHALL BE SINGLE CONDUCTOR COPPER.
B. BRANCH CIRCUITS SHALL NOT BE SMALLER THAN #12 AWG.
C. WIRING TO LIGHTING FIXTURES SHALL BE AS REQUIRED BY UL LABEL.
D. ALL BRANCH CIRCUIT CONDUITS OR CABLE ASSEMBLIES SHALL CONTAIN AN INSULATED GREEN GROUNDING CONDUCTOR...
E. ALL CONDUCTORS INSTALLED IN VERTICAL RACEWAYS SHALL BE SUPPORTED AT INTERVALS...
F. ALL EQUIPMENT AND DEVICE TERMINATIONS SHALL BE UL LISTED...
G. EITHER PROVIDE A SEPARATE NEUTRAL FOR EACH PHASE CONDUCTOR...
PART 4: DISCONNECT SWITCHES
A. DISCONNECT SWITCHES SHALL BE HEAVY-DUTY TYPE IN NEMA 1 ENCLOSURES...

PART 5: WIRING DEVICES
A. WIRING DEVICES SHALL BE COLOR SELECTED BY ARCHITECT/OWNER WITH MATCHING PLASTIC COVER PLATES.
TOGGLE SWITCHES SHALL BE AS FOLLOWS:
SINGLE POLE 20 AMP COOPER 1221
THREE WAY 20 AMP COOPER 1223
DUPLEX RECEPTACLES SHALL HAVE A NYLON FACE AND SHALL BE AS FOLLOWS:
15 AMP DUPLEX COOPER 5252
20 AMP DUPLEX COOPER 5362
15 AMP DUPLEX-GFCI COOPER GF5262
20 AMP DUPLEX-GFCI COOPER GF5362
B. DUPLEX RECEPTACLES ON DEDICATED CIRCUIT SHALL BE 20 AMP.
C. OUTLET BOXES SHALL NOT BE MOUNTED BACK-TO-BACK.
D. A MAXIMUM OF 10 RECEPTACLES SHALL BE ON EACH BRANCH CIRCUIT.
E. WEATHERPROOF COVERS SHALL HAVE A LID SO THAT PLUGS MAY BE INSTALLED WITHOUT COMPROMISING THE WP FUNCTION.
F. ALL OUTLETS (INCLUDING TELEPHONE, CABLE TV AND DATA) SHALL HAVE COVER PLATES.
PART 6: PANELBOARDS
A. PANELBOARDS SHALL BE DEAD-FRONT SAFETY TYPE.
B. PROVIDE HANDLE LOCK-ON DEVICES ON ALL CIRCUIT BREAKERS.
C. CIRCUIT BREAKERS USED FOR SWITCHING OF LIGHTING OR SIGN CIRCUITS.
PART 7: LIGHT FIXTURES
A. CATALOG NUMBERS GIVEN DENOTE MINIMUM QUALITY AND PERFORMANCE.
B. LAY-IN FIXTURES SHALL BE SUSPENDED FROM STRUCTURE.
C. SEE ARCHITECTURAL REFLECTED CEILING PLANS.
D. ALL RECESSED LIGHTING FIXTURES SHALL BE THERMALLY PROTECTED.
PART 8: TELEPHONE/DATA SYSTEM
A. FURNISH AND INSTALL A COMPLETE TELEPHONE/DATA CONDUIT SYSTEM.
B. PULL AND LEAVE IN EACH CONDUIT ONE PULL CORD.
C. TELEPHONE SERVICE CONDUITS SHALL BE PROVIDED TO THE PROPERTY LINE.
D. THE ELECTRICAL CONTRACTOR SHALL FURNISH AND INSTALL A #6 AWG GREEN COPPER WIRE IN A 3/4" CONDUIT.
PART 9: LIGHTING CONTROLS
F. FURNISH AND INSTALL AN ELECTRONIC TIME CONTROLLER.
G. TIME CONTROLLER SHALL HAVE THE FOLLOWING:
G.1. A MINIMUM 7-DAY CLOCK
G.2. BE CAPABLE OF BEING SET FOR SEVEN DIFFERENT DAY TYPES PER WEEK.
G.3. INCORPORATES AN AUTOMATIC HOLIDAY "SHUTOFF" FEATURE.
G.4. HAVE PROGRAM BACKUP CAPABILITIES.
G.5. INCLUDE A OVERRIDE SWITCH.
G.5.1. SHALL BE A MANUAL CONTROL.
G.5.2. WHEN INITIATED, SHALL PERMIT THE CONTROLLED LIGHTING TO REMAIN ON FOR NOT MORE THAN 2 HOURS.
G.5.3. ANY INDIVIDUAL OVERRIDE SHALL NOT CONTROL THE LIGHTING FOR AN AREA NOT LARGER THAN 5,000 SQUARE FEET.
H. LIGHTING CONTACTORS SHALL SWITCH A LOAD AT 120 VOLTS, 60 HZ.
I. ALL LIGHTING CONTACTORS SHALL BE ELECTRICALLY HELD.
PART 11: FIRE STOPPING
A. ALL PENETRATIONS OF NON-RATED PENETRATIONS SHALL BE SEALED.
B. PROVIDE FIRE STOPPING DEVICE(S) OR SYSTEM(S) WHICH HAVE BEEN TESTED.
C. DEVICE(S) AND/OR SYSTEM(S) SHALL BE BY HILTI, 3M OR EQUIVALENT.
D. WHERE OPENINGS FOR INSTALLATION OF ELECTRICAL BOXES EXCEEDS 16 SQUARE INCHES.
PART 12: SITE VISIT
A. EACH BIDDER SHALL VISIT THE PROJECT SITE PRIOR TO BID.

ELECTRICAL SYMBOLS SCHEDULE



ABBREVIATIONS
A AMPERE
AFF ABOVE FINISHED FLOOR
C CONDUIT
EWC ELECTRIC WATER COOLER
FLA FULL LOAD AMPS
GFCI GROUND FAULT CIRCUIT INTERRUPTER
G GROUND
KVA KILOVOLT AMPERE
KCMIL THOUSAND CIRCULAR MILS
KW KILOWATT
MCB MAIN CIRCUIT BREAKER
MISC MISCELLANEOUS
MLO MAIN LUGS ONLY
MTS MANUAL TRANSFER SWITCH
N/A NOT APPLICABLE
NEC NATIONAL ELECTRIC CODE
NUMBER
NTS NOT TO SCALE
P POLE
Ø PHASE
PNL PANELBOARD
SW SWITCH
TELE/DATA TELEPHONE/DATA
TYP TYPICAL
UG UNDERGROUND
V VOLT
UNOT UNLESS OTHERWISE NOTED
WP WEATHERPROOF
3R NEMA 3R ENCLOSURE

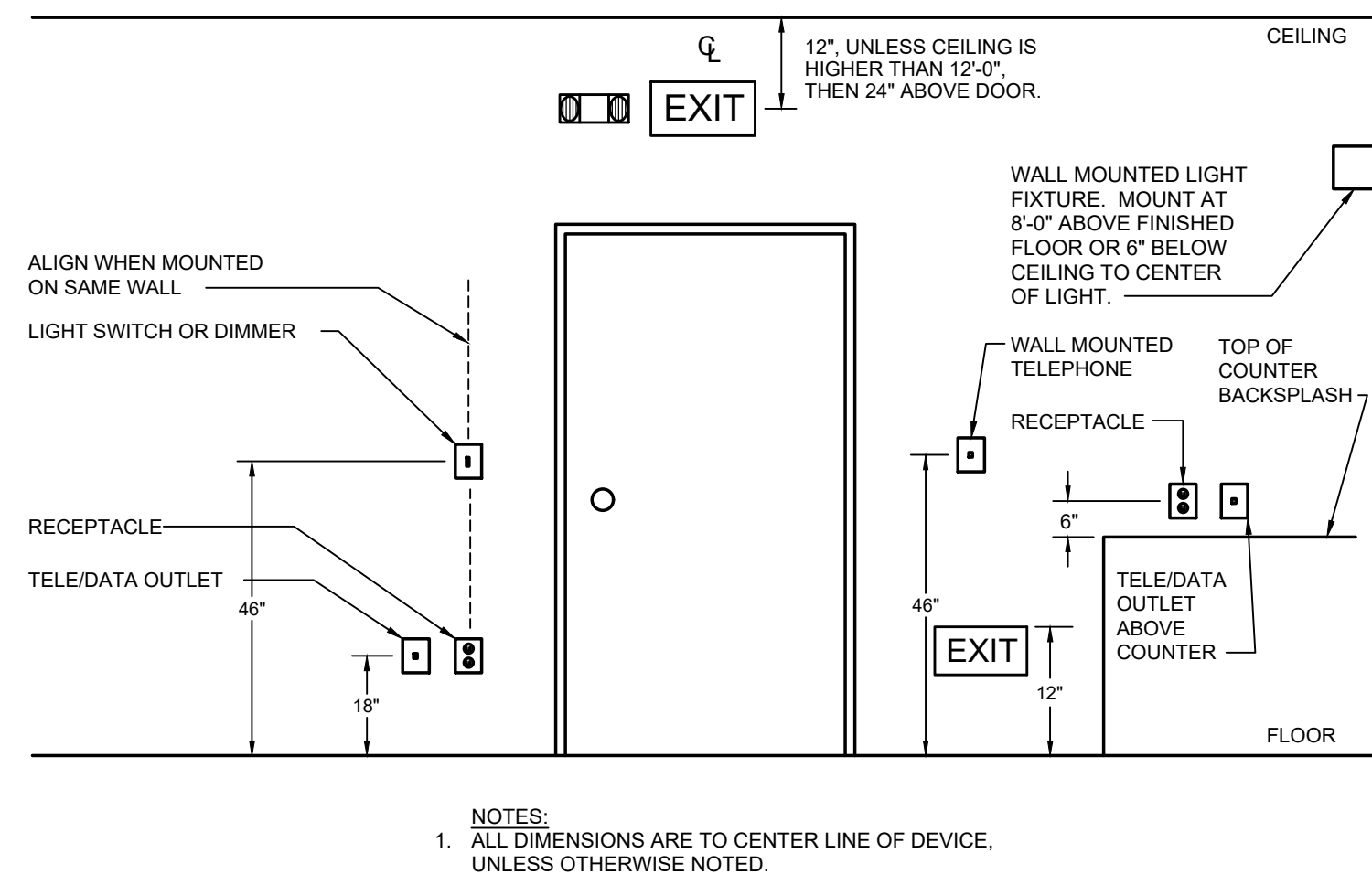
NOTES:
1. SEE DEVICE MOUNTING ELEVATION FOR MOUNTING HEIGHTS.
2. SEE SPECIFICATIONS FOR DEVICE COLOR AND COVER PLATE STYLE.

GENERAL NOTES

A. ELECTRICAL CONTRACTOR SHALL REVIEW ENTIRE SET OF CONTRACT DOCUMENTS INCLUDING BUT NOT NECESSARILY LIMITED TO ALL ARCHITECTURAL, STRUCTURAL, MECHANICAL, ELECTRICAL, PLUMBING AND ENTIRE PROJECT MANUAL.
B. VERIFY ALL REQUIREMENTS AND COORDINATE EXACT LOCATION OF INCOMING ELECTRICAL SERVICE.
C. ENGRAVED, LAMINATED PLASTIC IDENTIFICATION PLATES SHALL BE FURNISHED AND INSTALLED ON ALL PANELS AND SWITCHGEAR.
D. ELECTRICAL CONTRACTOR SHALL CAREFULLY EXAMINE THE DRAWINGS AND SPECIFICATIONS, VISIT THE SITE OF THE WORK, AND FULLY INFORM HIMSELF AS TO ALL CONDITIONS AND MATTERS THAT CAN, IN ANY WAY AFFECT THE WORK OR THE COST THEREOF.
E. SHARED NEUTRALS ARE NOT ALLOWED. EACH CIRCUIT SHALL HAVE ITS OWN INDEPENDENT NEUTRAL.
F. TO G.C. AND ALL SUBCONTRACTORS: NO PRICING SHOULD BE DONE FROM A PARTIAL SET AND NO CHANGE ORDER WILL BE ALLOWED FOR PRICING BASED ONLY ON A PARTIAL SET.
G. CONTRACTOR IS RESPONSIBLE FOR ISSUES THAT ARISE IN THE FIELD DUE TO THE SELECTION OF ALTERNATE EQUIPMENT TO WHAT IS SPECIFIED WITHIN THIS SET OF DRAWINGS.

NORTH CAROLINA ENERGY CODE

APPENDIX B (NORTH CAROLINA 2018 ENERGY CONSERVATION CODE) ELECTRICAL SUMMARY
METHOD OF COMPLIANCE:
[X] PRESCRIPTIVE [] PERFORMANCE [] ENERGY COST BUDGET
LIGHTING SCHEDULE
LAMP TYPE REQUIRED IN FIXTURE: SEE LIGHT FIXTURE SCHEDULE ON SHEET E1.1
TOTAL INTERIOR WATTAGE SPECIFIED VS ALLOWED: 5,586 W VS. 9,624 W
EXTERIOR WATTAGE SPECIFIED VS ALLOWED: 392 W VS. 1,231 W
SECTION C401.2 SHALL BE ACHIEVED BY ONE OF THE BELOW:
[] a. C406.2 MORE EFFICIENT HVAC EQUIPMENT
[] b. C406.3 REDUCED LIGHTING POWER DENSITY
[] c. C406.4 ENHANCED DIGITAL LIGHTING CONTROL SYSTEM
[] d. C406.5 ON-SITE SUPPLY OF RENEWABLE ENERGY
[] e. C406.6 DEDICATED OUTDOOR AIR SYSTEM
[] f. C406.7 REDUCED ENERGY USE IN SERVICE WATER HEATING
EQUIPMENT SCHEDULES WITH MOTORS (NOT USED FOR MECHANICAL SYSTEMS)
MOTOR HORSEPOWER N/A
NUMBER OF PHASES N/A
MINIMUM EFFICIENCY N/A
MOTOR TYPE N/A
NUMBER OF POLES N/A



NOTES:
1. ALL DIMENSIONS ARE TO CENTER LINE OF DEVICE, UNLESS OTHERWISE NOTED.

1 1/2" NO SCALE
E1 DEVICE MOUNTING ELEVATION

WAVE ENGINEERING
3540 TORINGDON WAY, SUITE 200
CHARLOTTE, NC 28277
950.256.7728
INFO@WAVE-ENGINEERING.COM
NC CORP. LICENSE #P-1621
PRELIMINARY
NOT FOR CONSTRUCTION
OR PRICING

10/08/2021

SPRIITED CYCLIST
16601 OLD STATESVILLE ROAD
HUNTERSVILLE, NC 28078
SHEET TITLE: ELECTRICAL SYMBOLS & SPECIFICATIONS

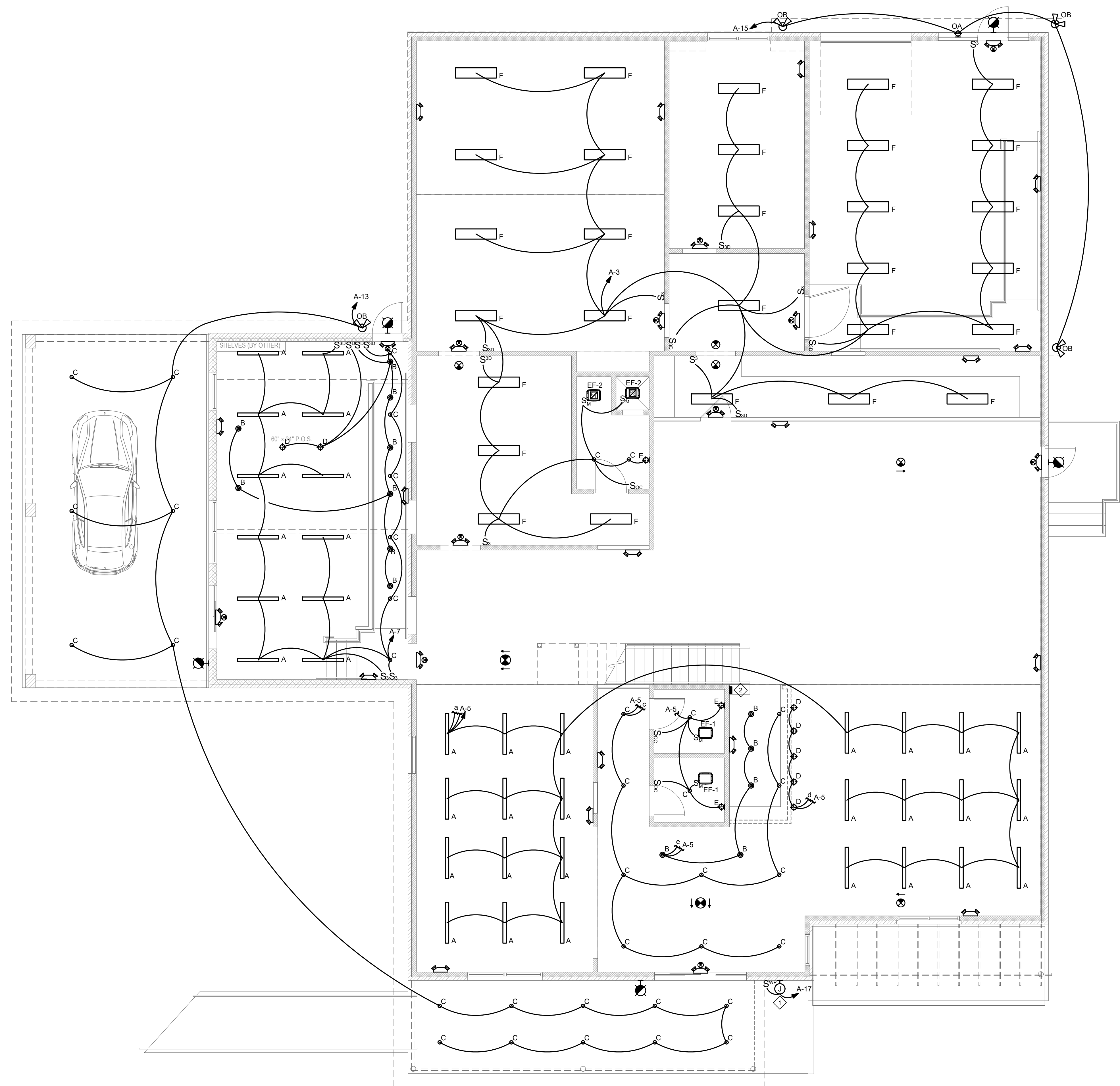
PROJECT NO: 21167 DRAWN BY: MDR
SCALE: AS NOTED ISSUE DATE: 10/01/2021

REVISIONS:

SHEET NUMBER:
EO.1

PRELIMINARY
 NOT FOR CONSTRUCTION
 OR PRICING

10/08/2021

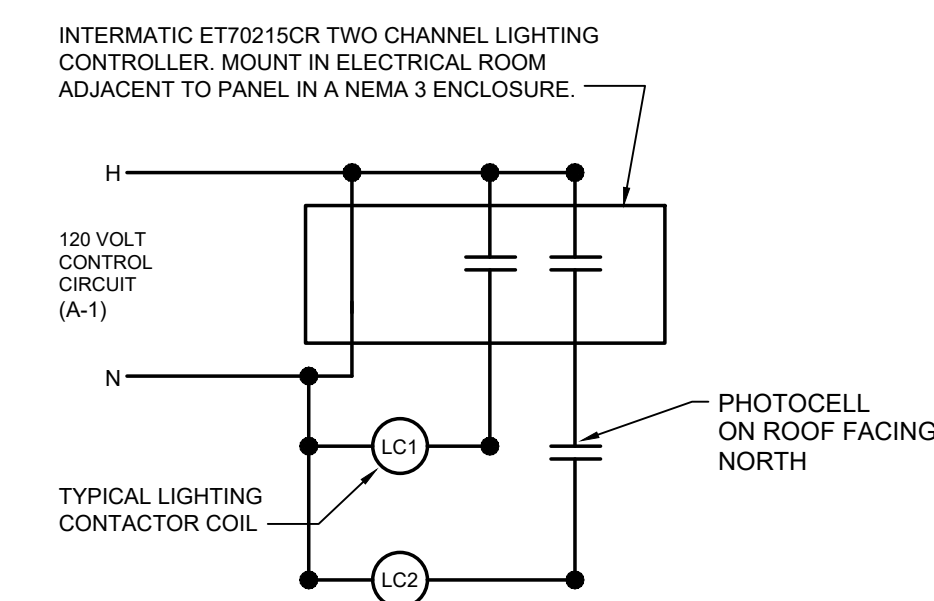


GENERAL NOTES THIS SHEET

1. ALL EMERGENCY/EGRESS FIXTURES SHALL BE CONNECTED TO LOCAL CIRCUIT SERVING RESPECTIVE AREA AND AHEAD OF ALL CONTROLS.
2. THE ELECTRICAL CONTRACTOR IS RESPONSIBLE FOR PROVIDING 0-10V CONDUCTORS FROM DIMMER SWITCHES TO ALL 0-10V LIGHTING AS REQUIRED.
3. COORDINATE SWITCH LOCATIONS WITH OWNER/ARCHITECT PRIOR TO ROUGH-IN WORK.
4. ALL CONNECTIONS SHALL BE COORDINATED WITH OTHER TRADES. FIELD LOCATIONS AND SHOP DRAWINGS PRIOR TO ANY ROUGH-IN WORK.
5. COORDINATE PLACEMENT OF GENERAL WIRING DEVICES WITH ARCHITECTURAL ELEVATIONS PRIOR TO ROUGH-IN WORK.

KEYED NOTES THIS SHEET

1. THE CONTRACTOR SHALL PROVIDE CONNECTION FOR NEW TENANT SIGN AS REQUIRED FOR OPERATION AND CONNECT TO TIME CLOCK AND PHOTOCELL ON ROOF FACING NORTH. VERIFY LOCATION IN FIELD WITH OWNER.
2. FIELD COORDINATE LOCATION OF DIMMER SWITCH BANK WITH OWNER/ARCHITECT PRIOR TO ANY ROUGH-IN WORK AND/OR PRICING. FIELD LOCATION MAY DIFFER FROM LOCATION INDICATED HERE IN. SEE DETAIL 3 THIS SHEET FOR CIRCUIT IDENTIFICATION.

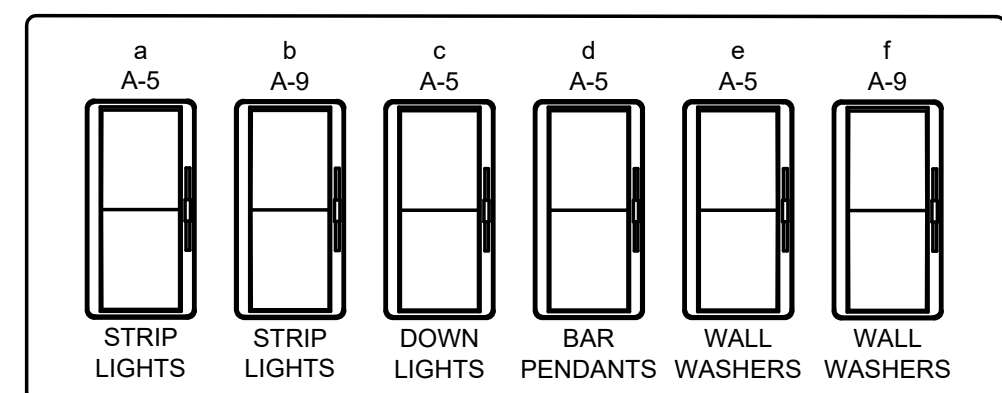


SEE PART 9 OF ELECTRICAL SPECIFICATIONS ON SHEET E0.1 FOR SPECIFICATIONS

CONTACTOR	COIL VOLTAGE	POLES	CIRCUITS SWITCHED
LC1	120	6	A-3,5,7,9,11
LC2	120	3	A-13,15,17

2 LIGHTING CONTROL DETAIL

E1.1 NO SCALE



3 DIMMER BANK DETAIL

E101 NO SCALE

- NOTE:
1. DIMMER TYPE SHALL BE COORDINATE WITH SELECTED LUMINAIRES PRIOR TO ANY ROUGH IN WORK. 0-10V DIMMING WIRES, PHASE CONDUCTORS & DRIVER TYPES SHALL MATCH RESPECTIVE FIXTURES.
 2. DIMMERS SHALL BE ALIGNED AND SQUARE IN MOUNTING AS CONFIGURED. BARRIERS PROVIDED WHERE REQUIRED. FIELD COORDINATE PLACEMENT OF DIMMERS WITH OWNER PRIOR TO PROJECT START-UP.
 3. AS AN ALTERNATE, THE CONTRACTOR SHALL PROVIDE OWNER WITH DIMMING PANEL SOLUTION WITH ONE(1) MASTER STATION, LOCATED IN OFFICE & TWO (2) REMOTE SCENE CONTROLLERS. FACTORY START-UP, OWNER TRAINING & ONE (1) REVISIT SHALL BE INCLUDED IN PRICING.

1 FIRST FLOOR LIGHTING PLAN

E1.1 SCALE: 3/16" = 1'-0"

SPIRITED CYCLIST
 16601 OLD STATESVILLE ROAD
 HUNTERSVILLE, NC 28078
 SHEET TITLE:
FIRST FLOOR LIGHTING PLAN

PROJECT NO: 21167
 DRAWN BY: MDR
 SCALE: AS NOTED
 ISSUE DATE: 10/01/2021

REVISIONS:

SHEET NUMBER:

E1.1



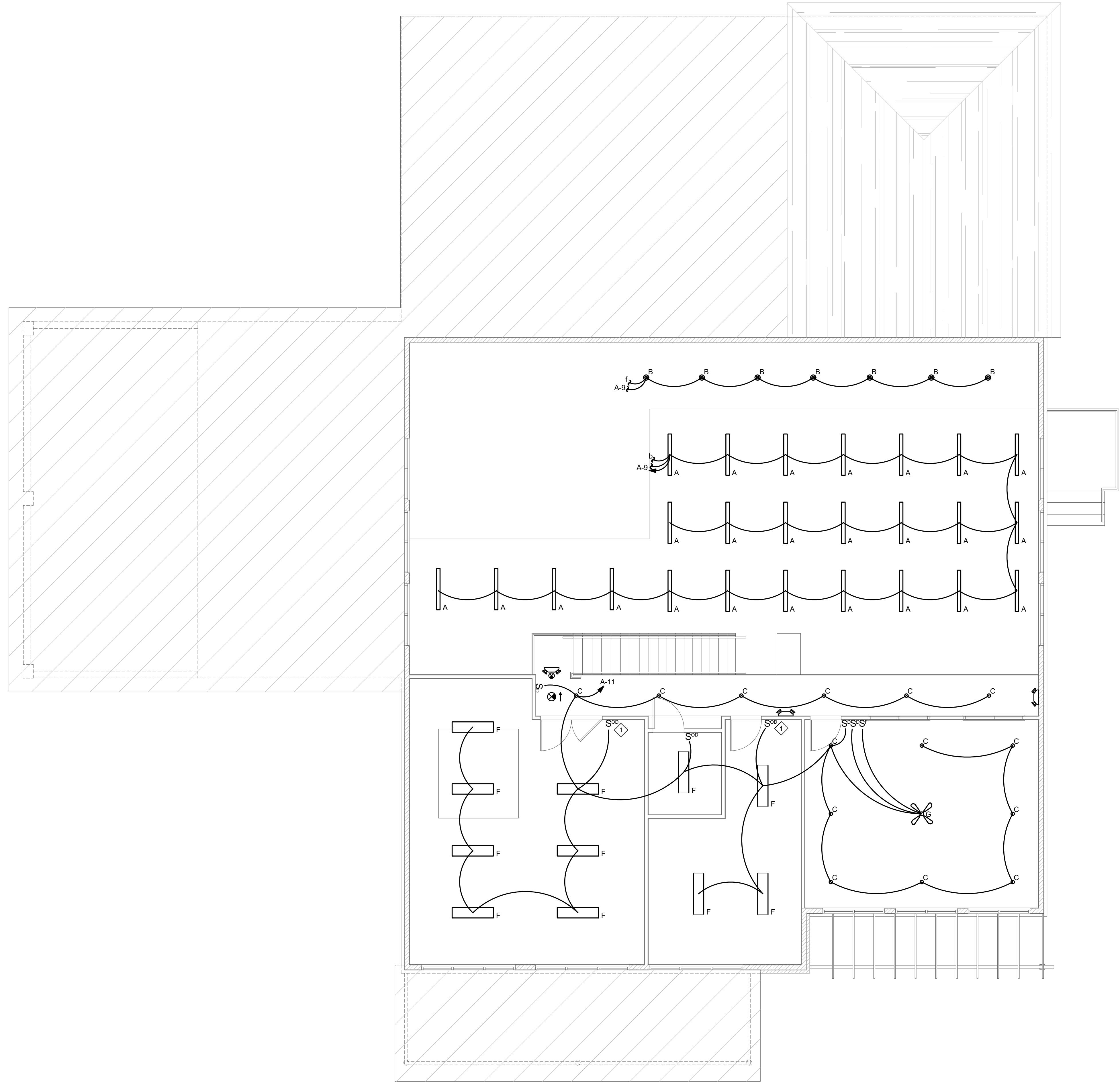
WAVE ENGINEERING
 3540 TORINGDON WAY, SUITE 200
 CHARLOTTE, NC 28277
 980.256.7728
 INFO@WAVE-ENGINEERING.COM
 NC CORP. LICENSE #P-1621

— PRELIMINARY —
 NOT FOR CONSTRUCTION
 OR PRICING

10/08/2021

- GENERAL NOTES THIS SHEET**
1. ALL EMERGENCY/EGRESS FIXTURES SHALL BE CONNECTED TO LOCAL CIRCUIT SERVING RESPECTIVE AREA AND AHEAD OF ALL CONTROLS
 2. THE ELECTRICAL CONTRACTOR IS RESPONSIBLE FOR PROVIDING 0-10V CONDUCTORS FROM DIMMER SWITCHES TO ALL 0-10V LIGHTING AS REQUIRED.
 3. COORDINATE SWITCH LOCATIONS WITH OWNER/ARCHITECT PRIOR TO ROUGH-IN WORK.
 4. ALL CONNECTIONS SHALL BE COORDINATED WITH OTHER TRADES, FIELD LOCATIONS AND SHOP DRAWINGS PRIOR TO ANY ROUGH-IN WORK.
 5. COORDINATE PLACEMENT OF GENERAL WIRING DEVICES WITH ARCHITECTURAL ELEVATIONS PRIOR TO ROUGH-IN WORK.

- KEYED NOTES THIS SHEET**
1. MANUAL ON/OFF. SET TIME OUT OF SENSOR TO TURN LIGHTS OFF AFTER 30 MINUTES.



1 SECOND FLOOR LIGHTING PLAN
 E1.2 SCALE: 3/16" = 1'-0"

SPIRITED CYCLIST
 16601 OLD STATESVILLE ROAD
 HUNTERSVILLE, NC 28078
 SHEET TITLE:
SECOND FLOOR LIGHTING PLAN

PROJECT NO: 21167 DRAWN BY: MDR
 SCALE: AS NOTED ISSUE DATE: 10/01/2021

REVISIONS:

SHEET NUMBER:
E1.2



WAVE ENGINEERING
 3540 TORINGDON WAY, SUITE 200
 CHARLOTTE, NC 28277
 980.256.7728
 INFO@WAVE-ENGINEERING.COM
 NC CORP. LICENSE #P-1621

— PRELIMINARY —
 NOT FOR CONSTRUCTION
 OR PRICING

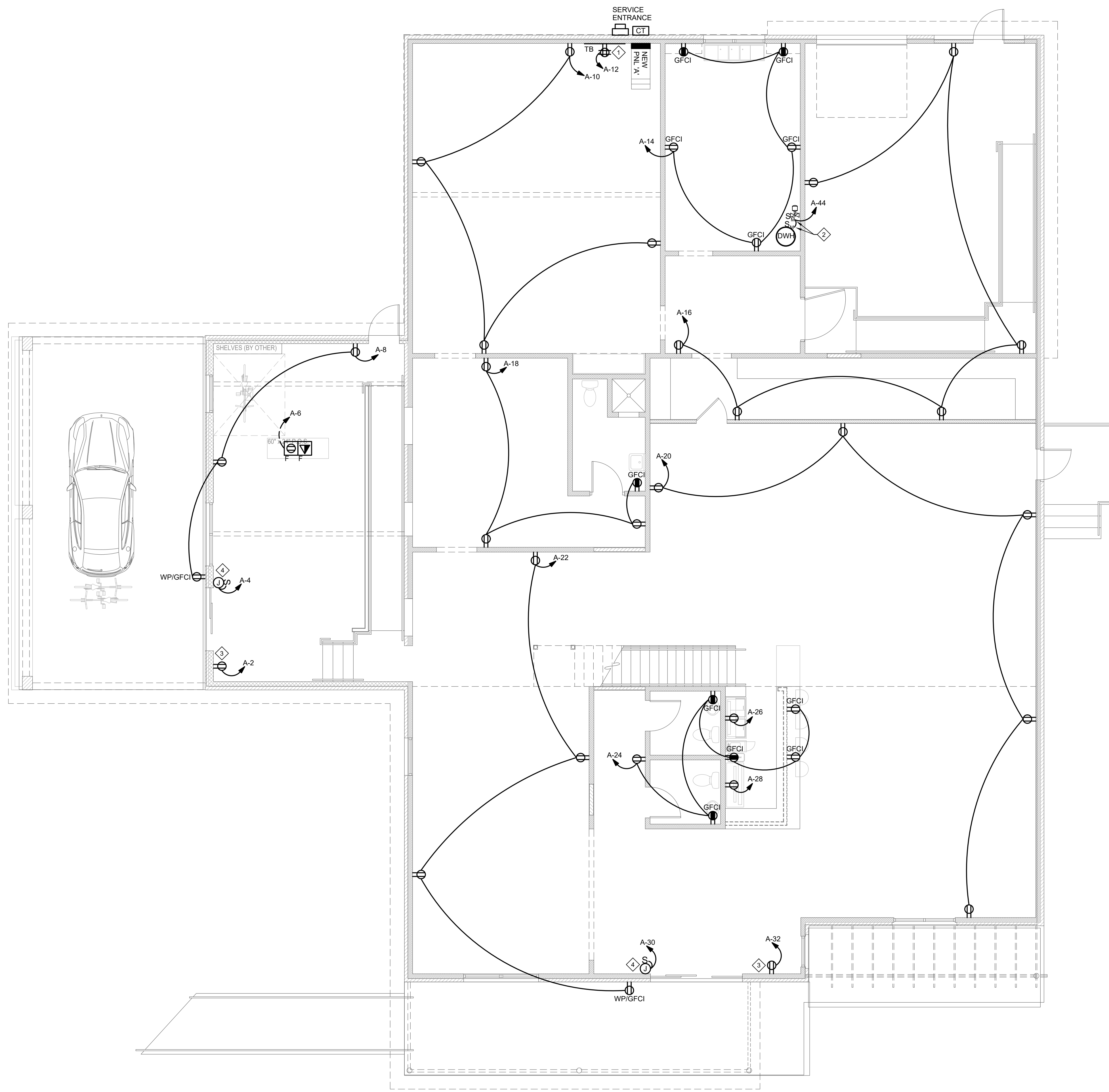
10/08/2021

GENERAL NOTES THIS SHEET

1. ALL CONNECTIONS SHALL BE COORDINATED WITH OTHER TRADES, FIELD LOCATIONS AND SHOP DRAWINGS PRIOR TO ANY ROUGH-IN WORK.
2. COORDINATE PLACEMENT OF GENERAL WIRING DEVICES WITH ARCHITECTURAL ELEVATIONS PRIOR TO ROUGH-IN WORK.
3. ITEMS SHOWN AS DASHED OR MARKED 'EX' ARE EXISTING TO REMAIN UNLESS OTHERWISE NOTED.

KEYED NOTES THIS SHEET

1. EC TO COORDINATE LOCATION OF TELEPHONE BOARD WITH OWNER / ARCHITECT PRIOR TO ANY ROUGH IN WORK. MOUNT HIGH ON WALL ABOVE SHELVEING.
2. COORDINATE LOCATION OF ELECTRICAL FOR WATER HEATER AND HOT WATER CIRCULATION PUMP WITH PLUMBING CONTRACTOR PRIOR TO ROUGH-IN WORK.
3. PROVIDE RECEPTACLE FOR SIGNAGE PER NEC 600.5(A).
4. PROVIDE CONNECTION AND DISCONNECTING MEANS FOR POWER AT AUTOMATIC DOOR. COORDINATE LOCATION WITH MANUFACTURE PRIOR TO ROUGH-IN.



1 FIRST FLOOR POWER PLAN
 E2.1 SCALE: 3/16" = 1'-0"

SPIRITED CYCLIST
 16601 OLD STATESVILLE ROAD
 HUNTERSVILLE, NC 28078
 SHEET TITLE:
FIRST FLOOR POWER PLAN

PROJECT NO: 21167 DRAWN BY: MDR
 SCALE: AS NOTED ISSUE DATE: 10/01/2021

REVISIONS:

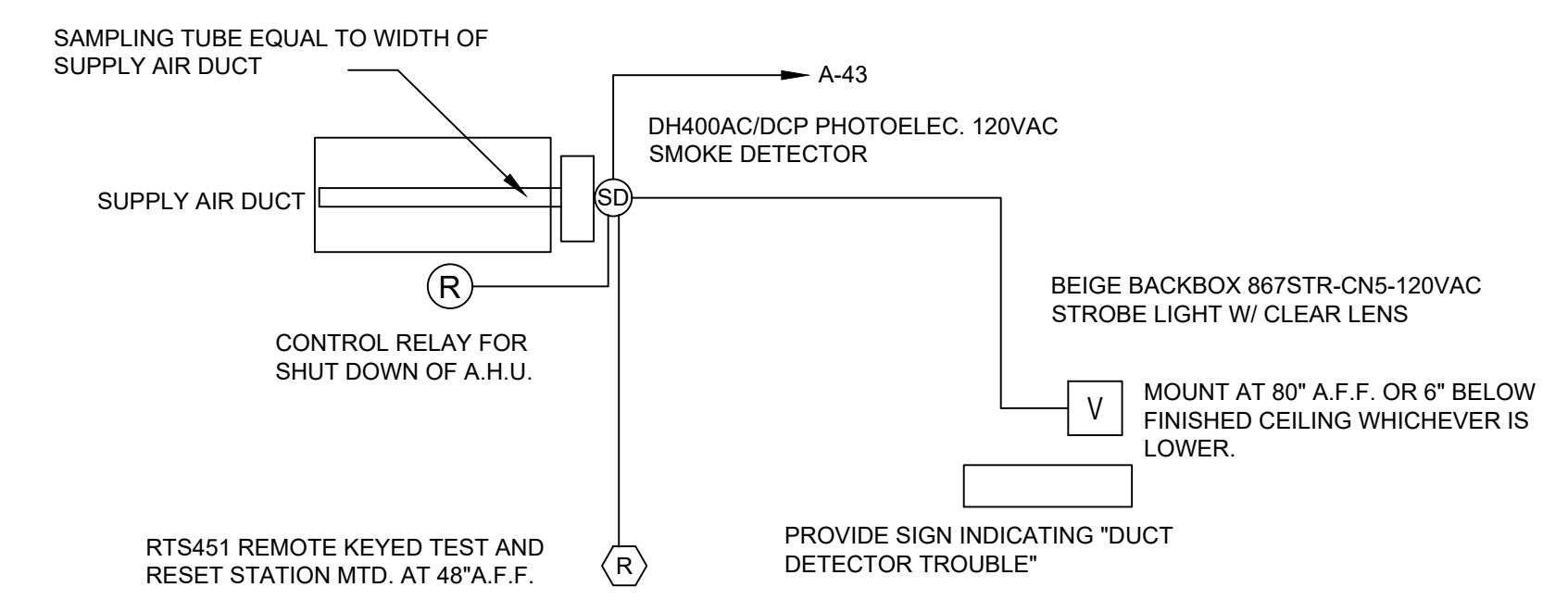
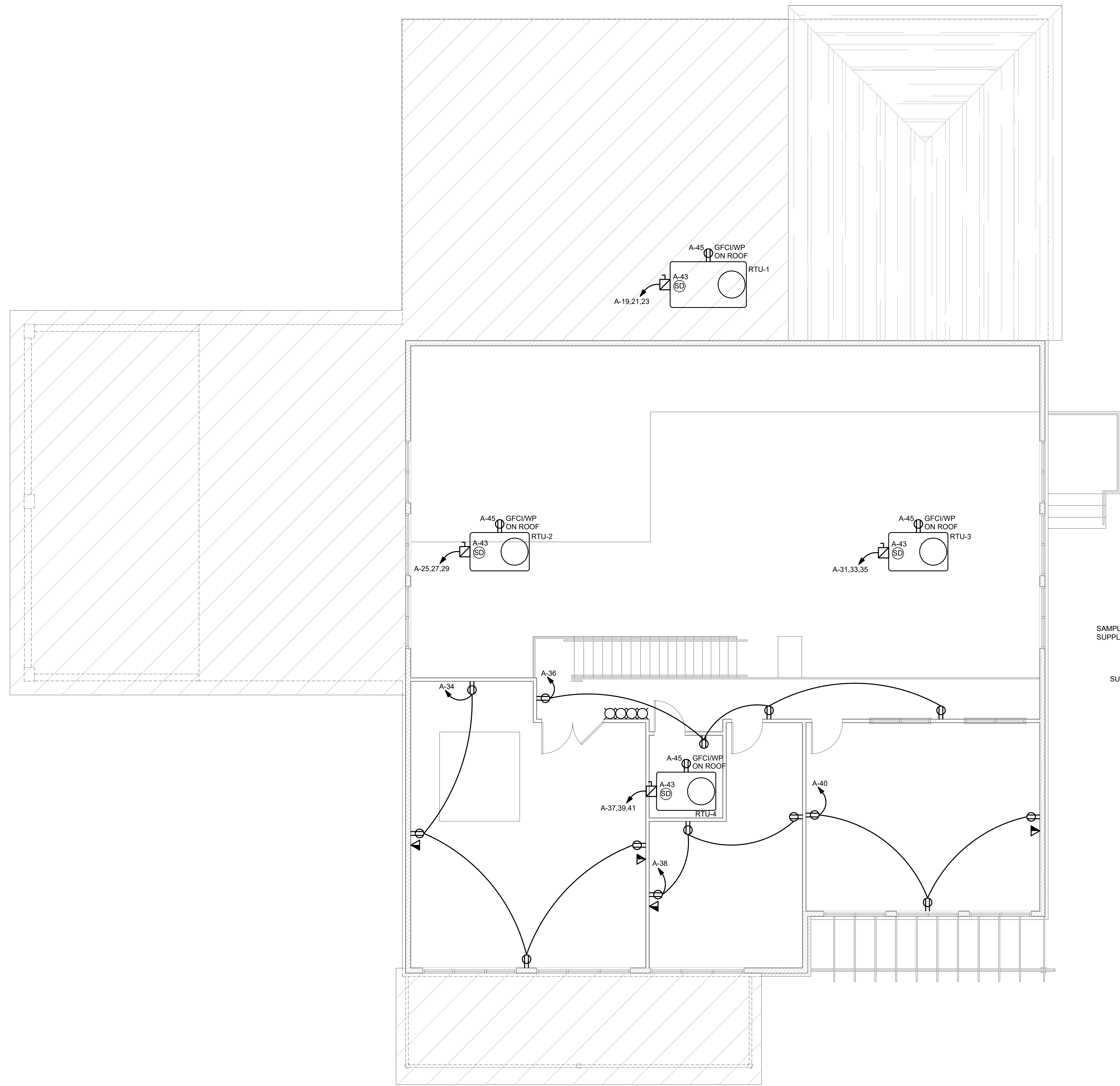
SHEET NUMBER:
E2.1

PRELIMINARY
 NOT FOR CONSTRUCTION
 OR PRICING

10/08/2021

GENERAL NOTES THIS SHEET

- ALL CONNECTIONS SHALL BE COORDINATED WITH OTHER TRADES, FIELD LOCATIONS AND SHOP DRAWINGS PRIOR TO ANY ROUGH-IN WORK.
- COORDINATE PLACEMENT OF GENERAL WIRING DEVICES WITH ARCHITECTURAL ELEVATIONS PRIOR TO ROUGH-IN WORK.
- ITEMS SHOWN AS DASHED OR MARKED 'EX' ARE EXISTING TO REMAIN UNLESS OTHERWISE NOTED.



2 DUCT DETECTOR MOUNTING DETAIL
 E2.2 DIAGRAMMATIC ONLY

SIGNALING EQUIPMENT MODEL NUMBERS ARE FOR EDWARDS SIGNALING AND SECURITY SYSTEMS.
 DUCT DETECTOR & REMOTE TEST MODEL NUMBERS ARE FOR SYSTEM SENSOR.
 ALL EQUIPMENT AND INSTALLATION SHALL COMPLY WITH THE LATEST LOCAL CODES.
 SMOKE DETECTOR TO BE SUPPLIED BY EC TO MC FOR INSTALLATION INTO DUCTWORK.
 EC TO PROVIDE, WIRE AND TEST OPERATION OF DETECTOR AND NOTIFICATION DEVICES.
 SEE MECHANICAL PLANS FOR LOCATION OF AV DEVICES.

1 SECOND FLOOR POWER PLAN
 E2.2 SCALE: 3/16" = 1'-0"

SPIRITED CYCLIST
 16601 OLD STATESVILLE ROAD
 HUNTERSVILLE, NC 28078
 SHEET TITLE:
 SECOND FLOOR POWER PLAN

PROJECT NO: 21167
 DRAWN BY: MDR
 SCALE: AS NOTED
 ISSUE DATE: 10/01/2021

REVISIONS:

SHEET NUMBER:
E2.2

