

Freestanding Building

Now Available

24,172± Square Feet

- 1.44± acres
- Located at the corner of 16th & G Streets near downtown Bedford
- Excellent visibility
- On-site parking
- Pylon signage
- 16th Street traffic count: 11,770 CPD

2023 Estimated Demographics	3 Miles	5 Miles	10 Miles
Population	16,308	21,981	40,714
Daytime Population	19,485	23,798	37,278
Average Household Income	\$74,272	\$78,575	\$82,320

624-628 16th Street
Bedford, Indiana 47421

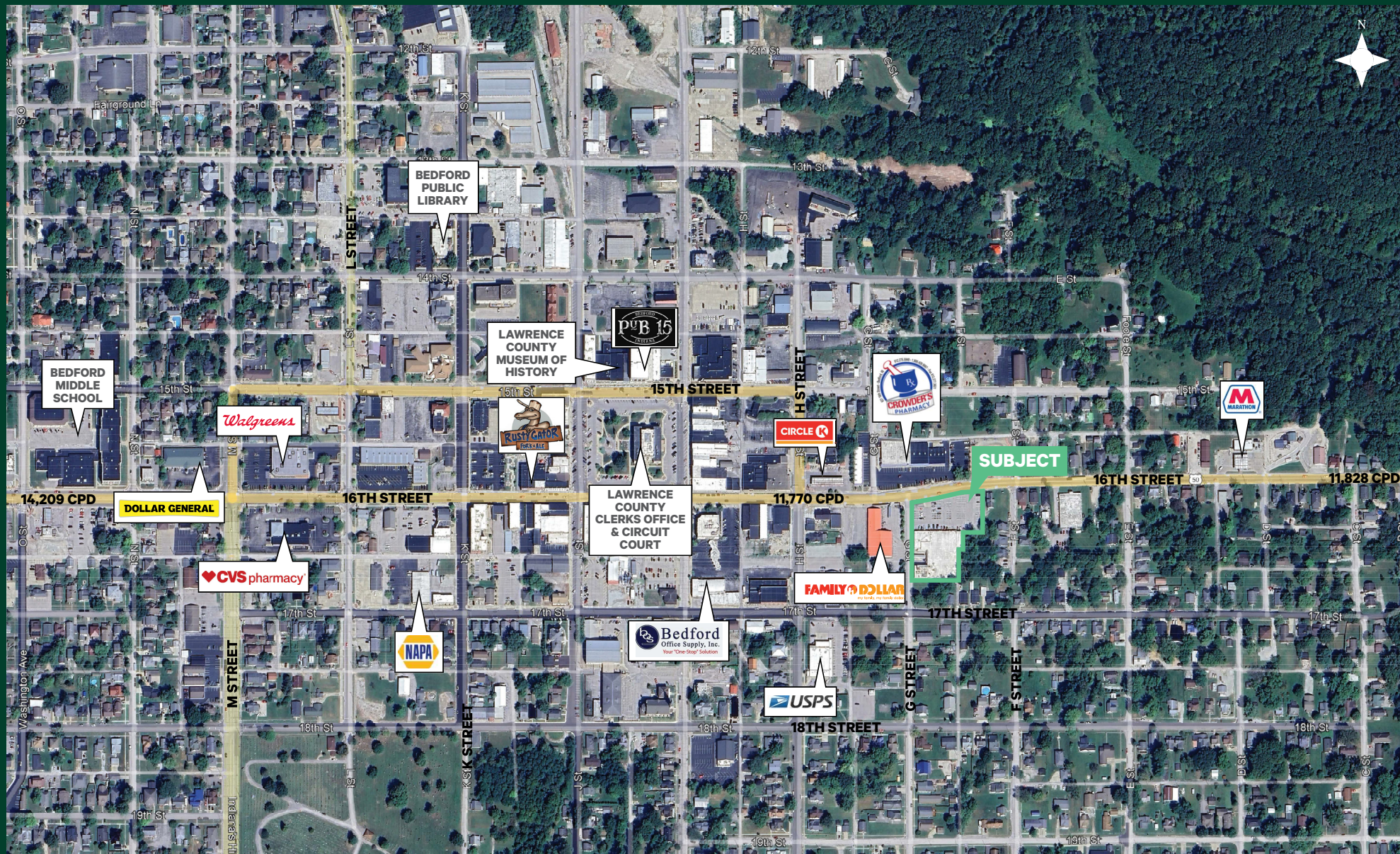


Contact Us

Clay Hunt
First Vice President
+1 502 412 7607
clay.hunt@cbre.com

Bryan Schwartz
Associate
+1 502 412 7635
bryan.schwartz@cbre.com

© 2024 CBRE, Inc. All rights reserved. This information has been obtained from sources believed reliable, but has not been verified for accuracy or completeness. You should conduct a careful, independent investigation of the property and verify all information. Any reliance on this information is solely at your own risk. CBRE and the CBRE logo are service marks of CBRE, Inc. All other marks displayed on this document are the property of their respective owners, and the use of such logos does not imply any affiliation with or endorsement of CBRE. Photos herein are the property of their respective owners. Use of these images without the express written consent of the owner is prohibited.



FLOOR PLAN

