

Place Greenfield Park

Longueuil, Quebec, Canada



433 Chabanel O, Suite 300
Montreal, QC H2N 2J4



(514) 383-3636



leasing@hsprop.com



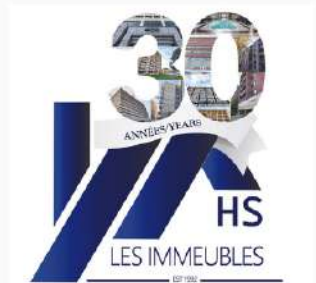
www.hsprop.com

Neighborhood Description

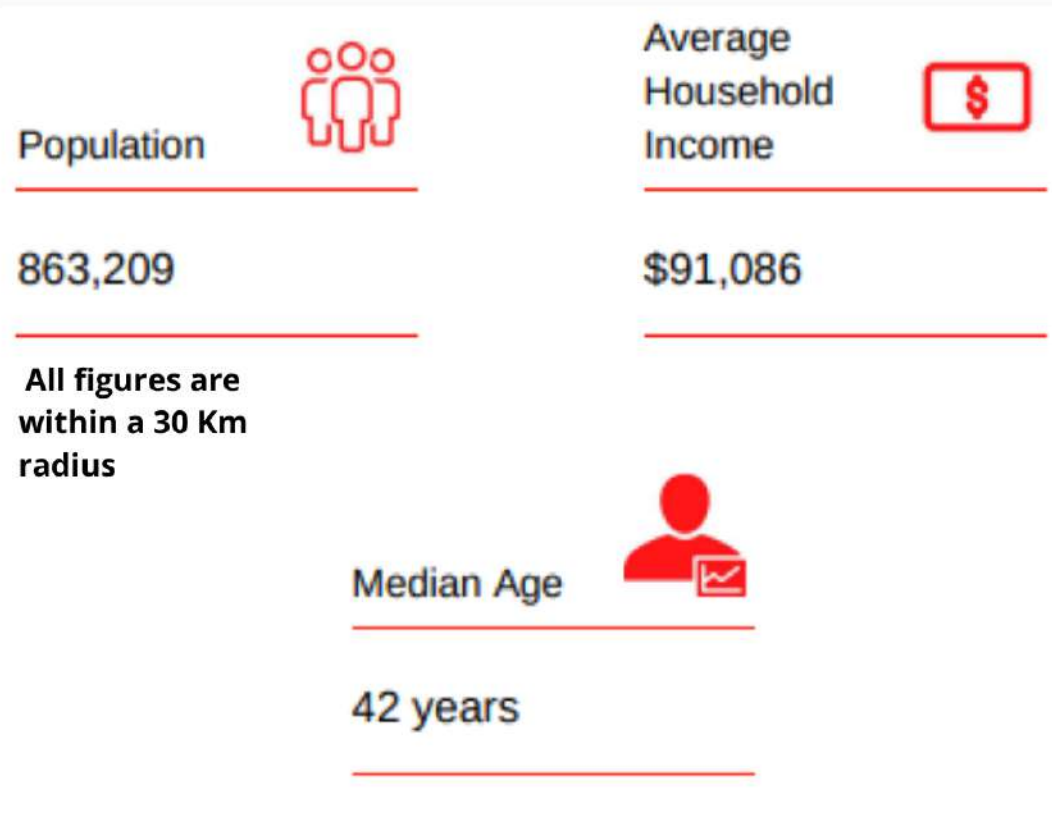
Place Greenfield Park is fronting Taschereau Boulevard to the south-east, between Gladstone and Margaret streets, within the borough of Greenfield Park of the City of Longueuil. The immediate vicinity is composed of commercial properties fronting Taschereau Boulevard and surrounded by a low to mid-density residential development.

The borough has grown attractive to young families and professionals who enjoy its relative proximity to downtown Montréal while benefiting from a wide range of community services and amenities all in a high-quality but fairly affordable living environment. The surroundings are composed of various municipal parks (Parc de la Cité, parc Michel Chartrand, Boisé du Tremblay, etc.) and institutional buildings (Charles-Le Moyne Hospital, Édouard-Montpetit Cegep, Sherbrooke University-Longueuil Campus, etc.).

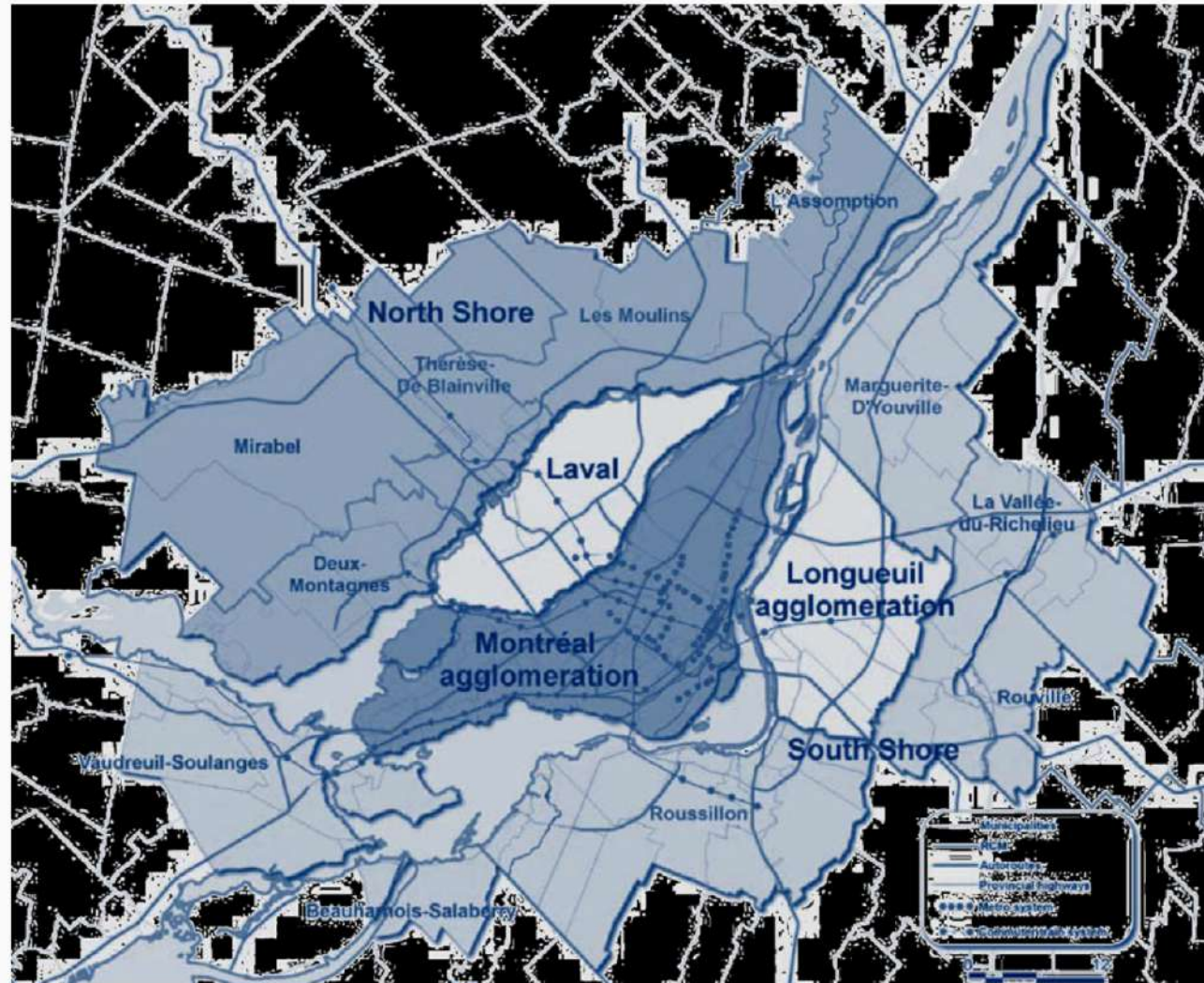
Place Greenfield Park is located only a few kilometers from the new Samuel-de-Champlain bridge to the west, and from Jacques-Cartier bridge to the east (access to the Island of Montreal) and from Highway 10, Highway 30, Route 112 and Route 132, all major south shore arteries. The nearest metro station, station Longueuil-Université-de-Sherbrooke part of the Yellow Line, is located further to the northwest at around 7 kilometers from the subject property. Bus lines along Taschereau Boulevard give access to the metro station as well as the new Réseau Express Métropolitain (REM).



Demographics



Island of Montreal & Suburbs



Site Description

Located at the intersection of Boulevard Taschereau & Rue Gladstone in Greenfield Park, this grocery anchored centre offers 16 units totalling 341,528 sq.ft. featuring retailers such as Cinemas Guzzo, Maxi, Winners, JYSK, and Bureau en Gros.

Civic Address: 3344-3626 Boul. Taschereau, Longueuil, Quebec

Site Area: 1,099,393 sq.ft.

Public Services: All usual services are installed and operational (water, gas, sewage, telephone, electricity, etc.)

Parking Facilities: Ample on-site parking with approximately 1,473 exterior parking stalls

Electricity: Main electrical rooms: 400, 1000 amps, 1200 amps, 347/600 Volts



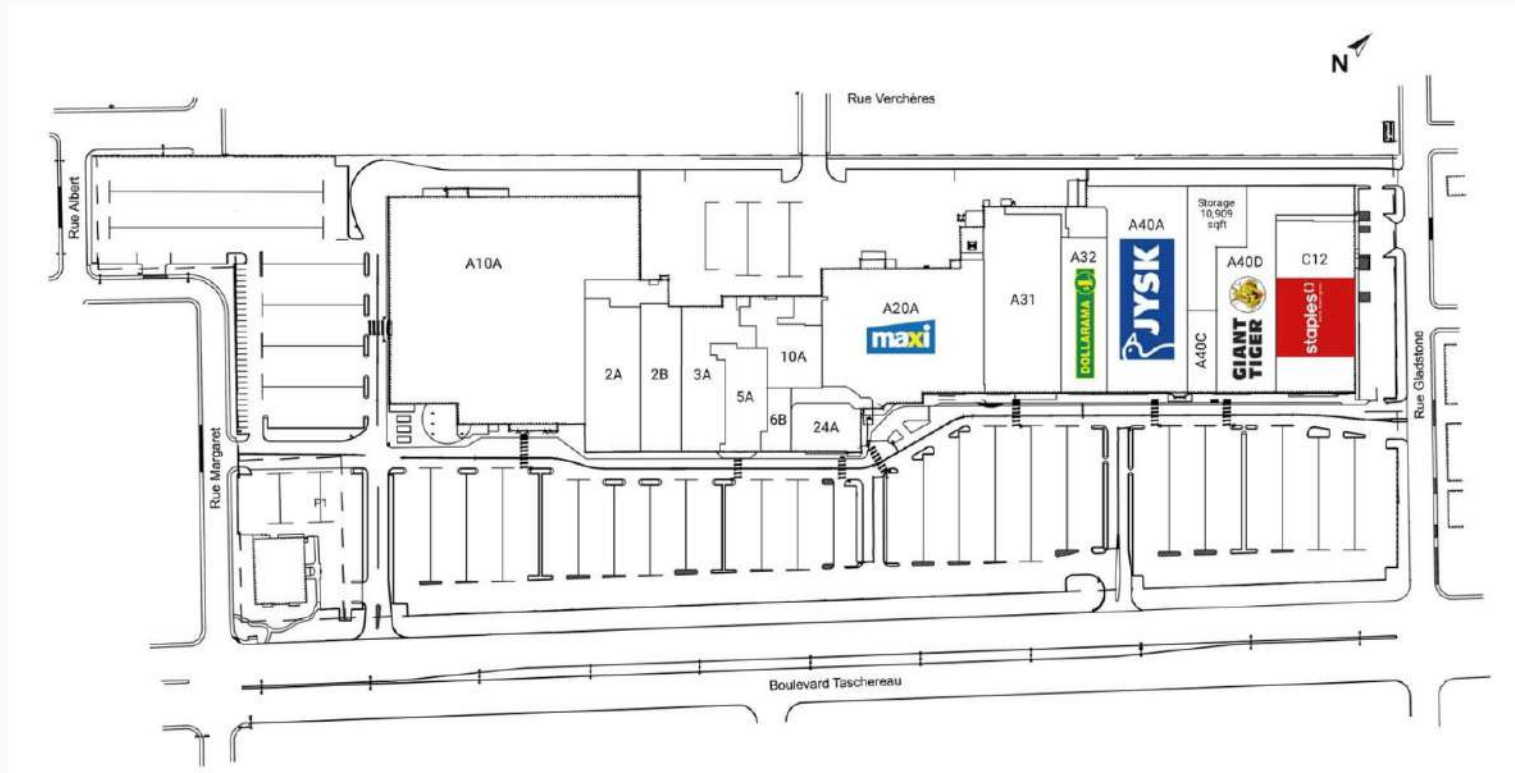
Tenant Mix



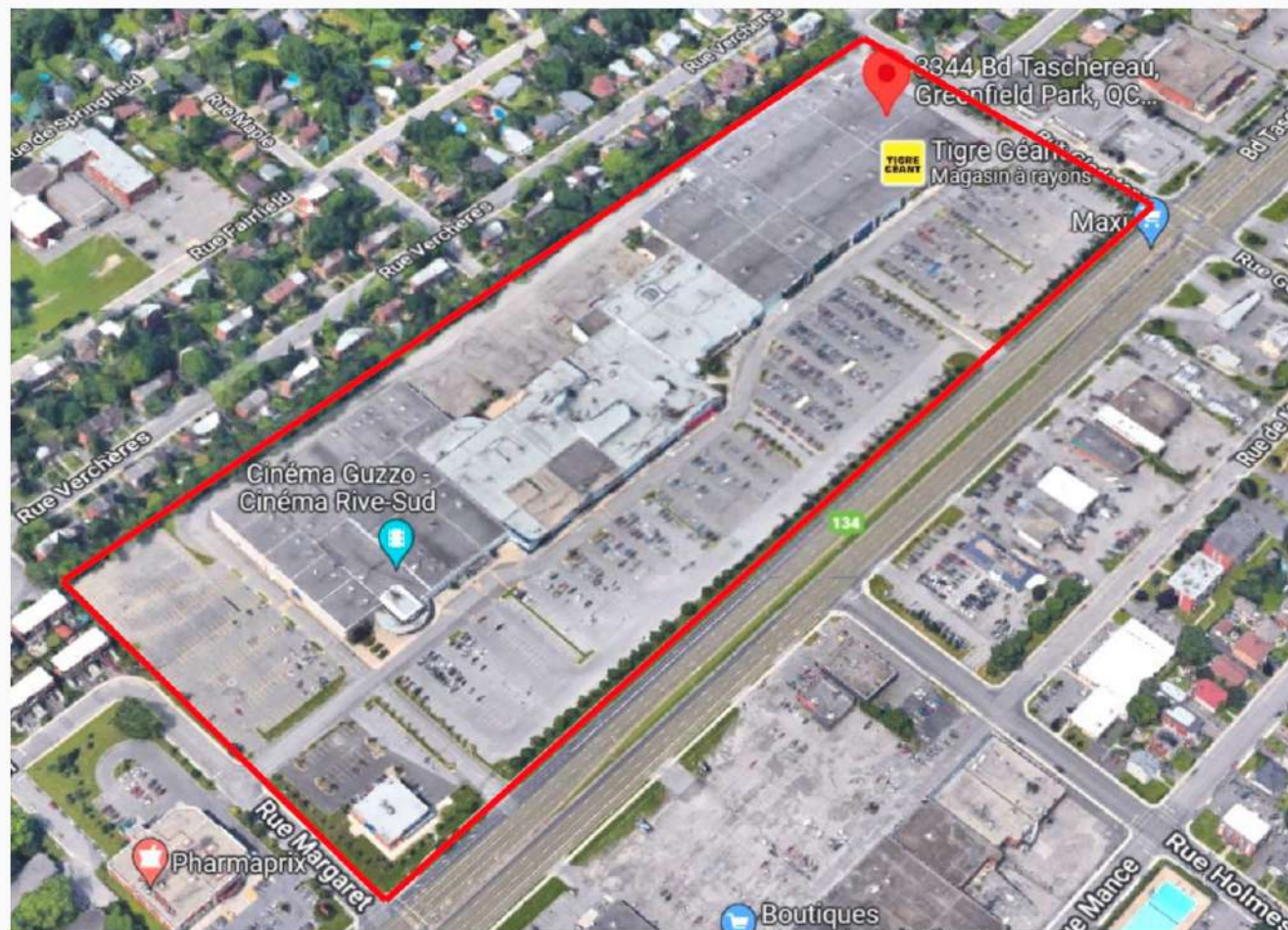
mobilia



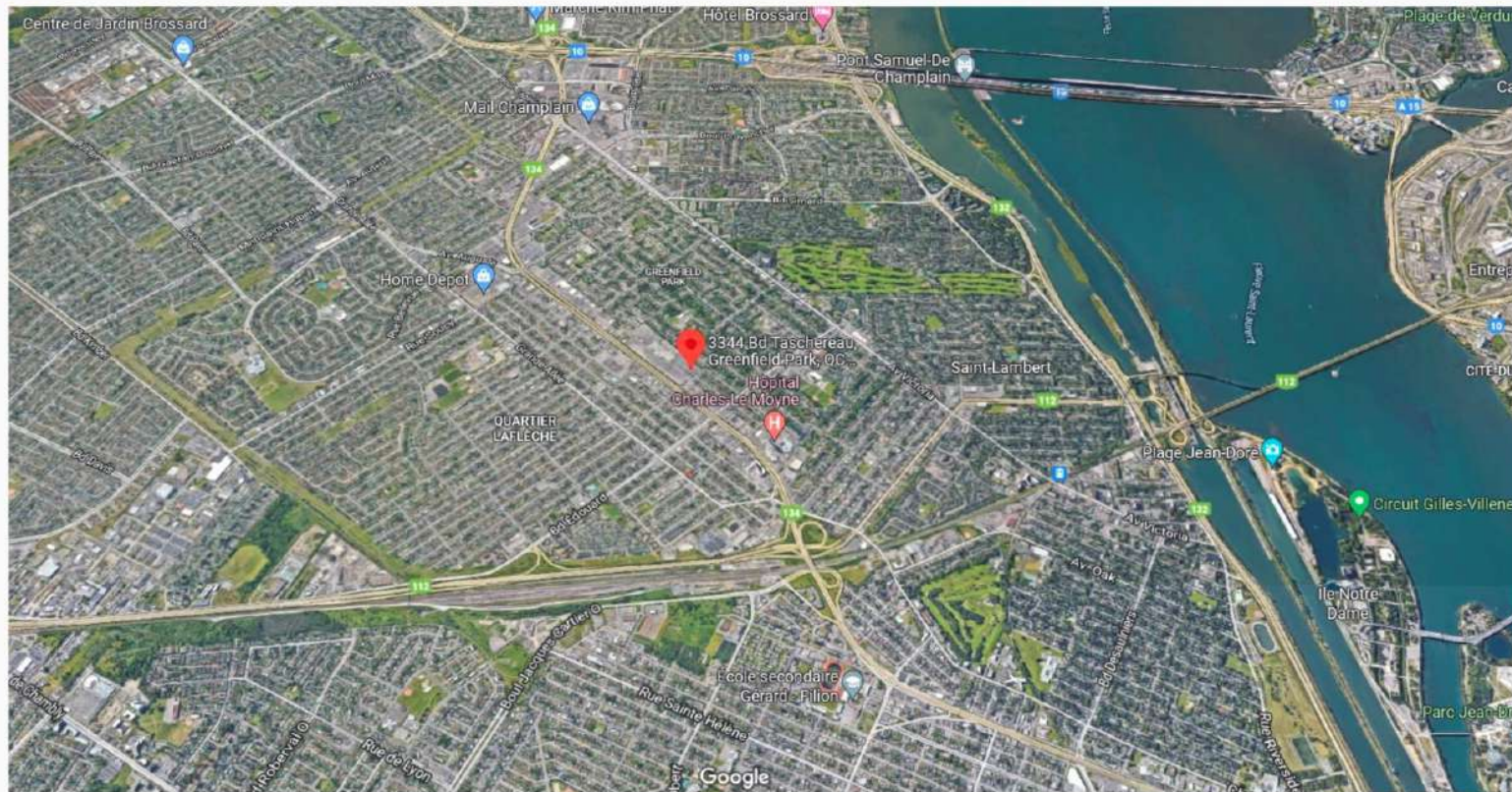
Tenant Map



Aerial View



Map



Thank you for your interest!



433 Chabanel O, Suite 300
Montreal, QC H2N 2J4



(514) 383-3636



leasing@hsprop.com



www.hsprop.com