

**BERKSHIRE
HATHAWAY**
HOMESERVICES

GEORGIA
PROPERTIES

FOR LEASE



**1838 METROPOLITAN PKWY. & 575 FAIR DR.
ATLANTA, GA 30315**

3 BUILDING COMPLEX

11,733 SF, 4,000SF & 9,600 SF


COMMERCIAL DIVISIONSM

JIM CONRAD
404.660.6105

BUCKHEAD OFFICE | 3744 ROSWELL RD NE | ATLANTA, GA 30342 | (404) 537-5200

PROPERTY HIGHLIGHTS

1838 METROPOLITAN PKWY & 575 FAIR DR. | ATLANTA, GA



TOTAL SPACE AVAILABLE: 25,332 SF

PARK TYPE: INDUSTRIAL PARK

MAX. CONTIGUOUS: 11,732 SF

Building 1 | 9,600SF

Building 2 | 11,733 SF

Building 3 | 4,000 SF

- Rare intown three building office/warehouse complex
- Two Story Office Building. (11,733 SF)
- Office/Warehouse Building (9,600 SF) at 575 Fair Drive with Shop Space: (1) 12' x 12' Grade Level Drive-In Door
- Electrical Service: 800 AMPS/ 600v 3-Phase Wiring
- Parking: 87 marked on-site parking spaces
- Close to Atlanta Beltline Westside and Southside Trail Access via Metropolitan
- Central Intown location with close access to I-85 / I-75 and GA 166 (Langford Parkway)



JIM CONRAD

Commercial Real Estate

M: 404.660.6105

O: 404.537.5200

conradregroup@yahoo.com

jimconrad.commercialga.com



COMMERCIAL DIVISIONSM

© 2024 BHH Affiliates, LLC. An independently operated subsidiary of HomeServices of America, Inc., a Berkshire Hathaway affiliate, and a franchisee of BHH Affiliates, LLC. Berkshire Hathaway HomeServices and the Berkshire Hathaway HomeServices symbol are registered service marks of Columbia Insurance Company, a Berkshire Hathaway affiliate. If your home is currently listed with a Broker, this is not intended as a solicitation. Equal Housing Opportunity.

Information contained herein may have been provided by outside sources and while deemed to be reliable, may be estimated, projected, subject to change, and/or limited in scope, and therefore should be relied upon as accurate. Information should be independently confirmed within an applicable due diligence period.

575 SW FAIR DR. | ATLANTA, GA

9,600 SF | PRICE AVAILABLE UPON REQUEST

- Building Type: Industrial
- Building Subtype: Warehouse
- Building Size: 9,600 SF
- Lot Size: 0.62 AC
- Year Built: 1987
- Construction: Metal Building
- Clear Height: 15'
- Drive In Bay: 1
- Power Supply: Amps: 800 Phase: 3 Wiring

FOR LEASE



1838 METROPOLITAN PKWY | ATLANTA, GA

5,866 - 11,732 SF | PRICE AVAILABLE UPON REQUEST

- Building Type: Office
- Year Built: 1956
- Building Size: 11,732 SF
- Building Height: 2 Stories
- First Floor: 5,866 SF
- Second Floor: 5,866 SF
- **Can be combined** with additional space(s) for up to 11,732 SF of adjacent space
- Typical Floor Size: 5,866 SF
- Parking: Available up to 60 Spaces



1838 METROPOLITAN PKWY | ATLANTA, GA

4,000 SF | PRICE AVAILABLE UPON REQUEST

- Building Type: Office w/ large open space for group meetings
- Year Built: 1956
- Building Size: 4,000 SF
- Building Height: 1 Story
- Typical Floor Size: 4,000 SF
- Fits 10 - 32 People



JIM CONRAD

Commercial Real Estate

M: 404.660.6105

O: 404.537.5200

conradregroup@yahoo.com

jimconrad.commercialga.com

**BERKSHIRE
HATHAWAY**
HOMESERVICES

GEORGIA
PROPERTIES



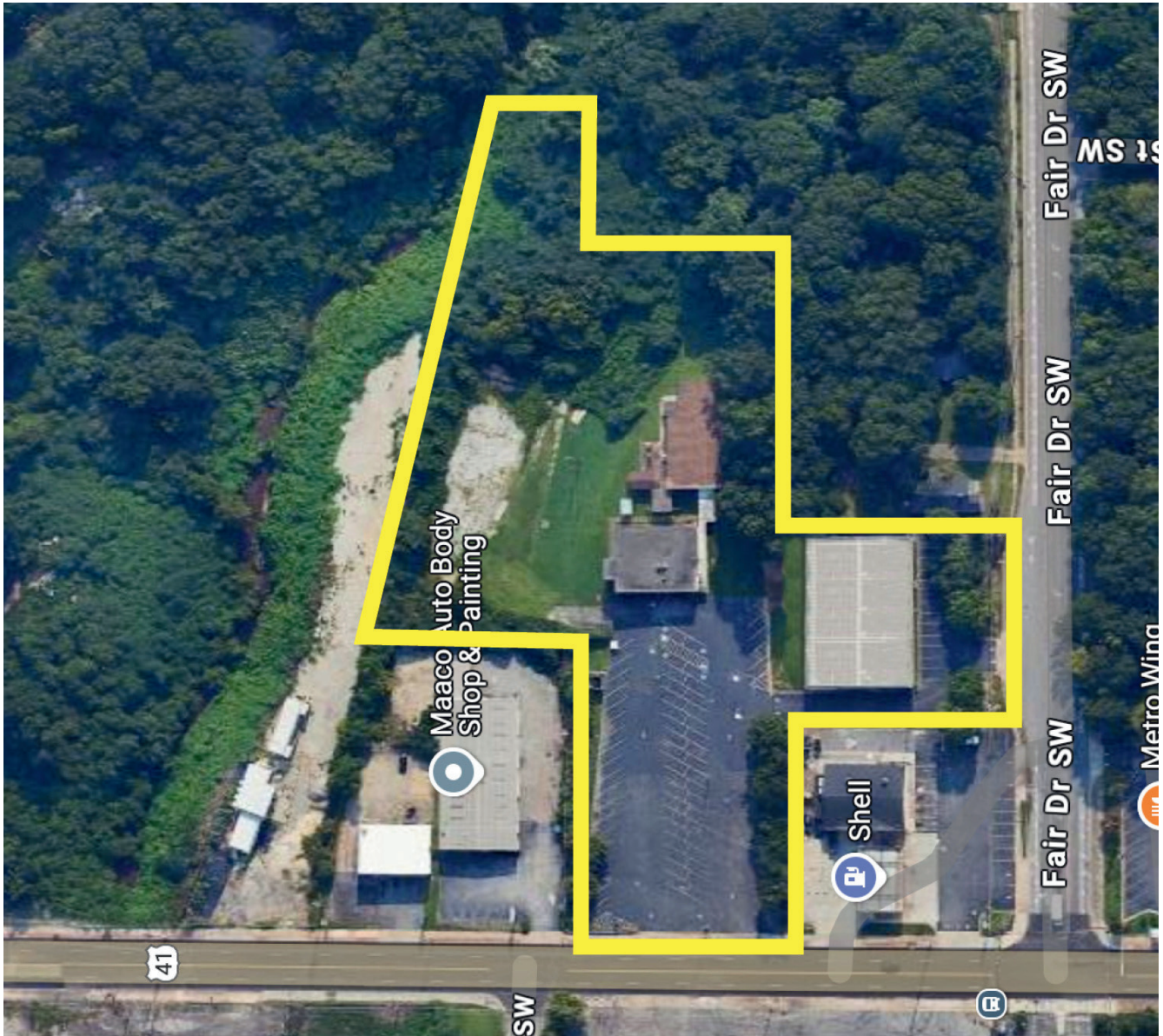
COMMERCIAL DIVISIONSM

© 2024 BHH Affiliates, LLC. An independently operated subsidiary of HomeServices of America, Inc., a Berkshire Hathaway affiliate, and a franchisee of BHH Affiliates, LLC. Berkshire Hathaway HomeServices and the Berkshire Hathaway HomeServices symbol are registered service marks of Columbia Insurance Company, a Berkshire Hathaway affiliate. If your home is currently listed with a Broker, this is not intended as a solicitation. Equal Housing Opportunity.

Information contained herein may have been provided by outside sources and while deemed to be reliable, may be estimated, projected, subject to change, and/or limited in scope, and therefore should be relied upon as accurate. Information should be independently confirmed within an applicable due diligence period.

PROPERTY MAP

1838 METROPOLITAN PKWY & 575 FAIR DR. | ATLANTA, GA



JIM CONRAD

Commercial Real Estate

M: 404.660.6105

O: 404.537.5200

conradregroup@yahoo.com

jimconrad.commercialga.com



COMMERCIAL DIVISIONSM

© 2024 BHH Affiliates, LLC. An independently operated subsidiary of HomeServices of America, Inc., a Berkshire Hathaway affiliate, and a franchisee of BHH Affiliates, LLC. Berkshire Hathaway HomeServices and the Berkshire Hathaway HomeServices symbol are registered service marks of Columbia Insurance Company, a Berkshire Hathaway affiliate. If your home is currently listed with a Broker, this is not intended as a solicitation. Equal Housing Opportunity.

Information contained herein may have been provided by outside sources and while deemed to be reliable, may be estimated, projected, subject to change, and/or limited in scope, and therefore should be relied upon as accurate. Information should be independently confirmed within an applicable due diligence period.