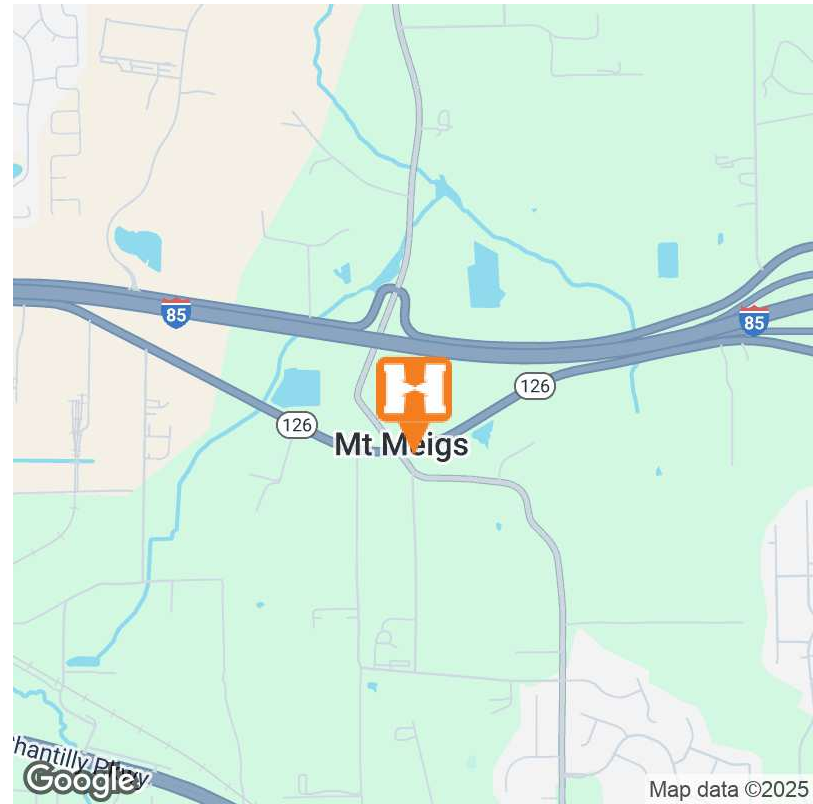


EXECUTIVE SUMMARY



OFFERING SUMMARY

| | |
|---------------|---------------|
| Sale Price: | \$195,000 |
| Available SF: | 33,105 +/- SF |
| Lot Size: | 0.76 Acres |
| Zoning: | Commercial |

PROPERTY OVERVIEW

This 0.76-acre corner lot is strategically located at the intersection of Pike Road and U.S. Highway 80 East in the growing Pike Road community (ZIP 36064). Offering 556 feet of frontage on Hwy 80 E and 103 feet of frontage on Pike Road, this site delivers outstanding visibility and access for commercial or mixed-use development. Positioned in a high-traffic corridor, the property benefits from its close proximity to major thoroughfares, including Ware's Ferry Road, Atlanta Highway, and Interstate 85, providing convenient connectivity to Montgomery, Auburn, and even regional hubs like Atlanta. Whether you're looking to establish a retail, service, or office presence, this high-profile corner lot presents a rare opportunity in one of the area's most dynamic and visible locations. For more information, contact Colby Zaleski at 334-868-3700.

PROPERTY HIGHLIGHTS

- Zoned Commercial
- Prime location on U.S. 80
- Ideal for industrial development
- High visibility
- Strategic corner lot
- Ample space for expansion
- Proximity to major transportation routes
- Opportunity for diverse commercial ventures

0.76-ACRE COMMERCIAL CORNER LOT ON PIKE RD. | COMMERCIAL FOR SALE

ADDITIONAL PHOTOS



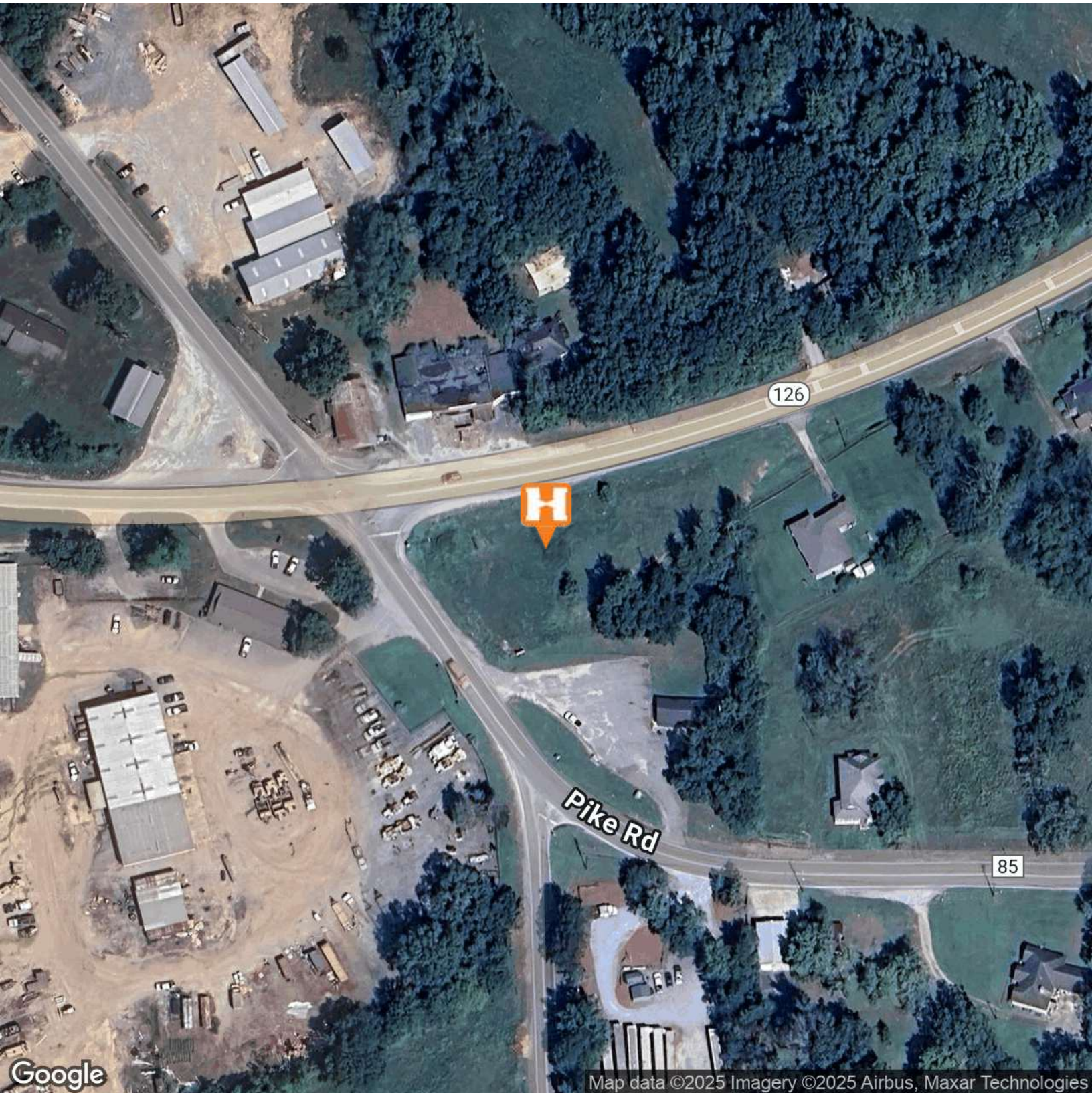
PAUL HODGES
paul.hodges@hodgeswarehouse.com
334.315.1382

**THE RIGHT PLACE.
THE RIGHT SPACE.**

*All information is from sources deemed reliable, but no warranty is made as to the accuracy thereof and same is submitted subject to errors, omissions, change of price, or other conditions, such as prior sales or withdrawal without notice by Hodges Commercial Real Estate, Inc. or the Owner.

0.76-ACRE COMMERCIAL CORNER LOT ON PIKE RD. | COMMERCIAL FOR SALE

AERIAL MAP



Map data ©2025 Imagery ©2025 Airbus, Maxar Technologies

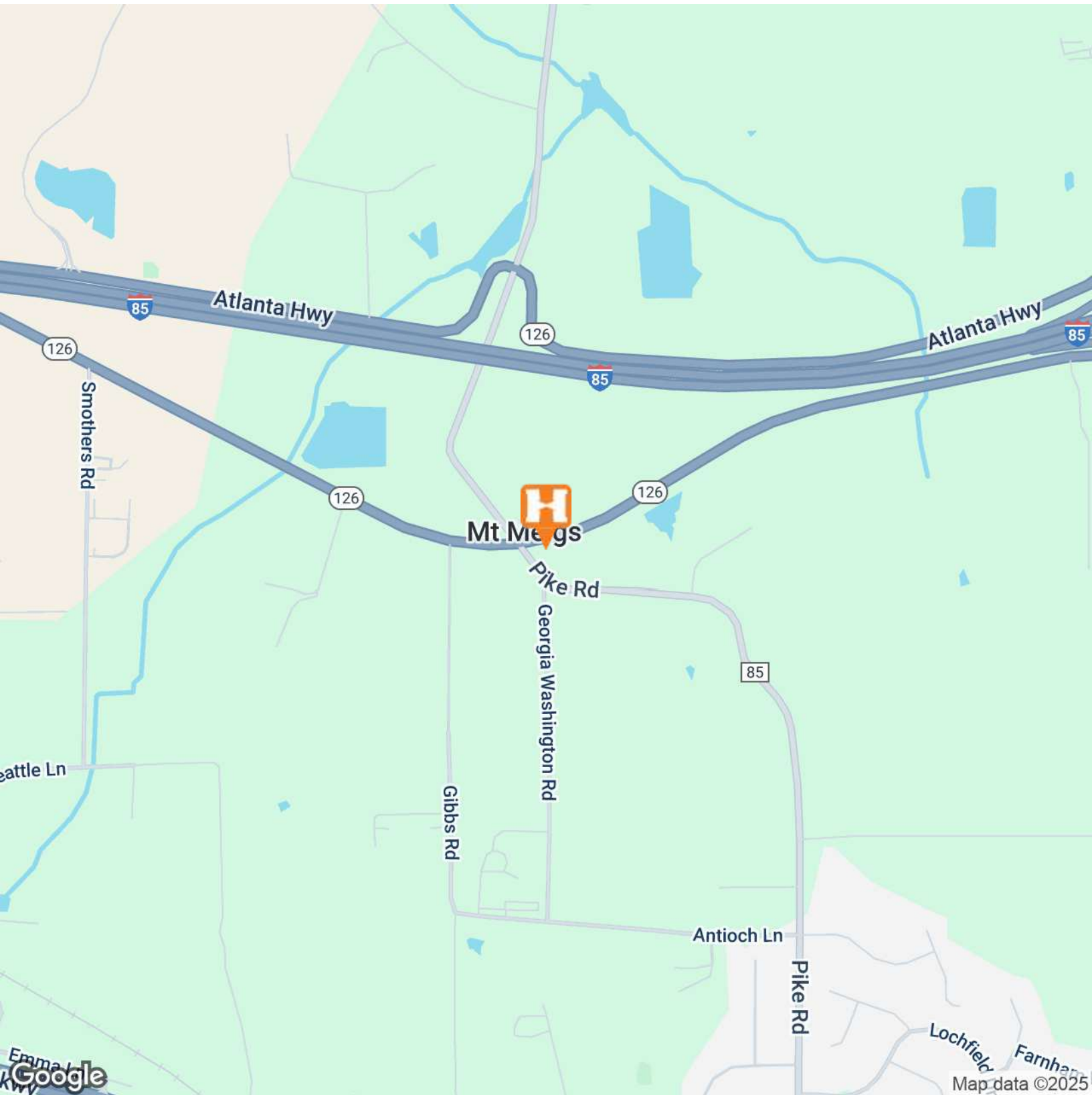
PAUL HODGES
paul.hodges@hodgeswarehouse.com
334.315.1382

**THE RIGHT PLACE.
THE RIGHT SPACE.**

*All information is from sources deemed reliable, but no warranty is made as to the accuracy thereof and same is submitted subject to errors, omissions, change of price, or other conditions, such as prior sales or withdrawal without notice by Hodges Commercial Real Estate, Inc. or the Owner.

0.76-ACRE COMMERCIAL CORNER LOT ON PIKE RD. | COMMERCIAL FOR SALE

LOCATION MAP

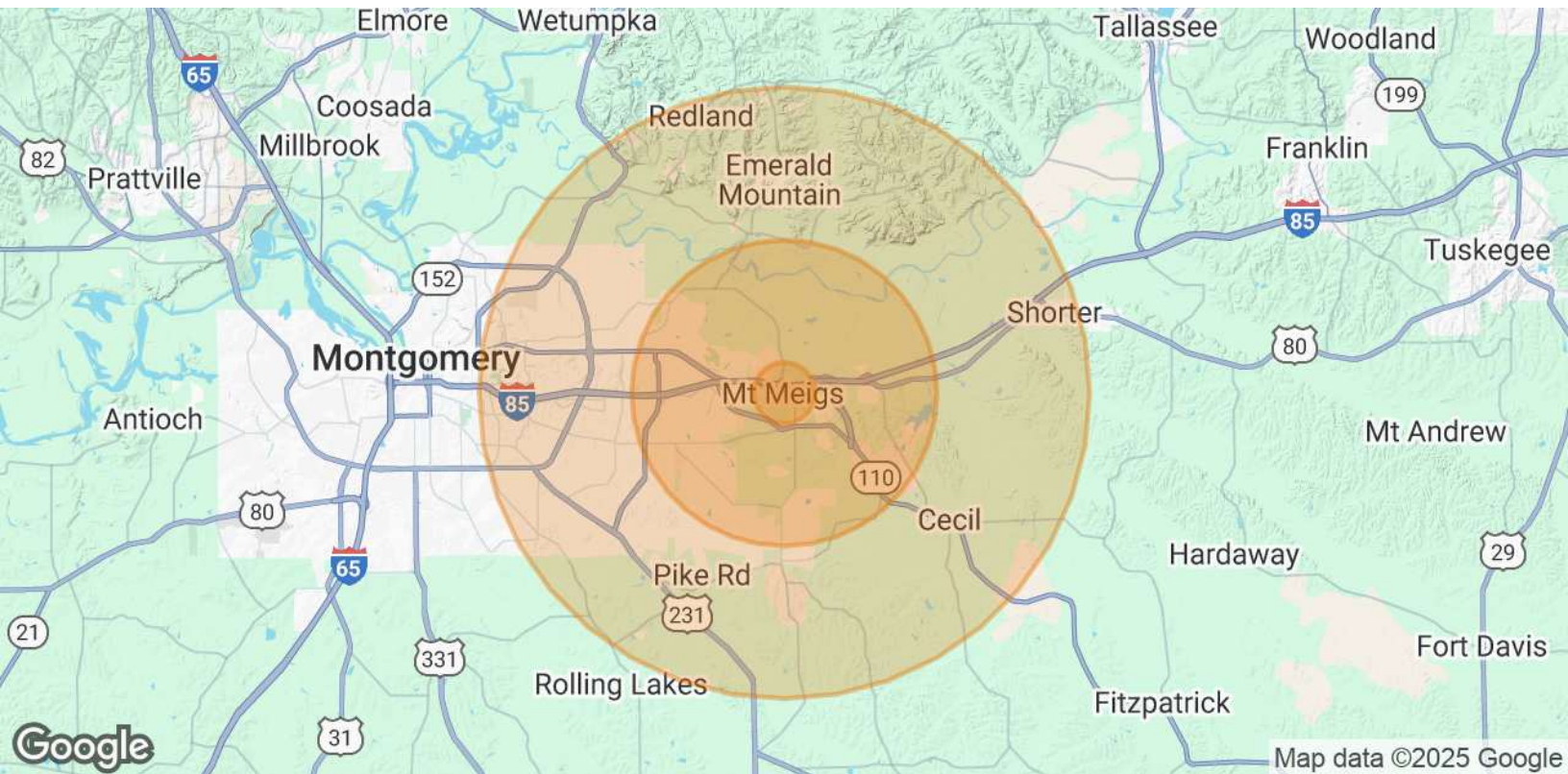


PAUL HODGES
paul.hodges@hodgeswarehouse.com
334.315.1382

**THE RIGHT PLACE.
THE RIGHT SPACE.**

*All information is from sources deemed reliable, but no warranty is made as to the accuracy thereof and same is submitted subject to errors, omissions, change of price, or other conditions, such as prior sales or withdrawal without notice by Hodges Commercial Real Estate, Inc. or the Owner.

DEMOGRAPHICS MAP & REPORT



POPULATION

| | 1 MILE | 5 MILES | 10 MILES |
|----------------------|--------|---------|----------|
| Total Population | 790 | 43,432 | 149,069 |
| Average Age | 39 | 41 | 39 |
| Average Age (Male) | 38 | 39 | 38 |
| Average Age (Female) | 40 | 42 | 41 |

HOUSEHOLDS & INCOME

| | 1 MILE | 5 MILES | 10 MILES |
|---------------------|-----------|-----------|-----------|
| Total Households | 298 | 16,587 | 61,546 |
| # of Persons per HH | 2.7 | 2.6 | 2.4 |
| Average HH Income | \$116,301 | \$120,741 | \$88,896 |
| Average House Value | \$324,980 | \$343,587 | \$248,697 |

Demographics data derived from AlphaMap

PAUL HODGES

paul.hodges@hodgeswarehouse.com
334.315.1382

**THE RIGHT PLACE.
THE RIGHT SPACE.**