



Colliers

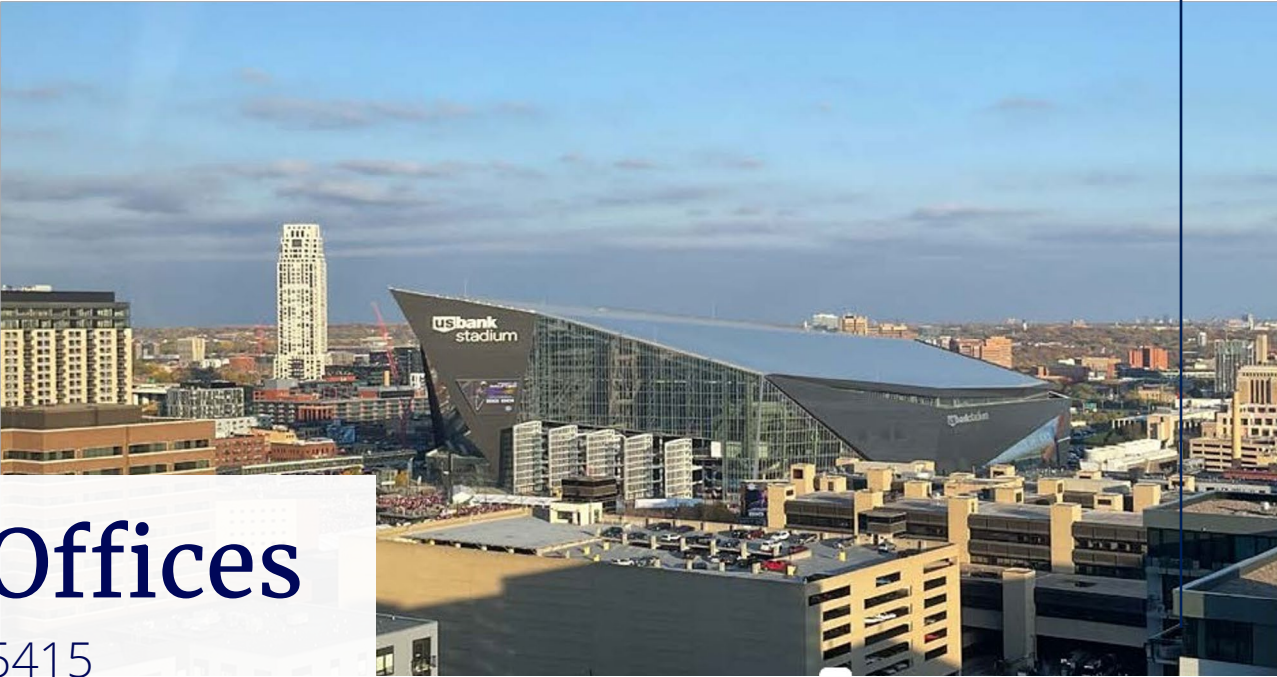


For Lease

# Centre Village Offices

431 7th St S, Minneapolis, MN 55415

**Tom Dunsmore**  
*Vice President*  
+1 651 775 4282  
thomas.dunsmore@colliers.com



1600 Utica Ave S, Suite 300  
Minneapolis, MN 55416  
+1 952 897 7700  
colliers.com

Accelerating success.

# Centre Village Offices

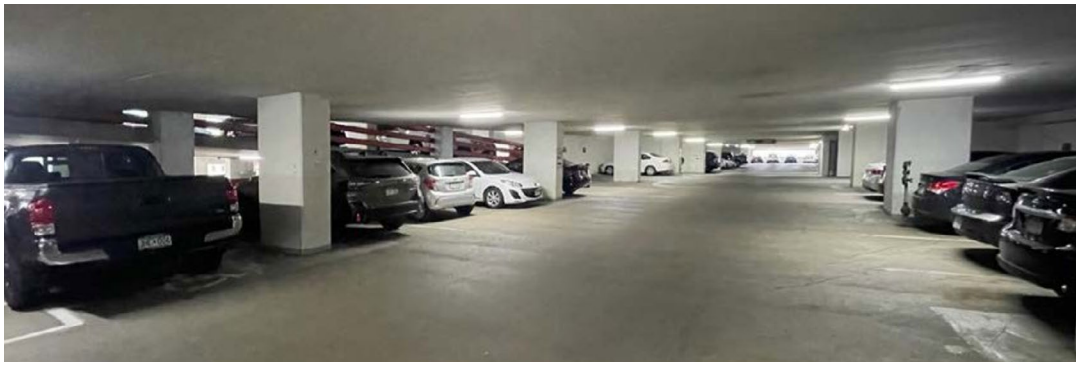
## Multi-tenant Office Space

- Office space on floors 24 & 25
- 24th and 25th floors have secure access
- Connections to the Minneapolis skyways
- Some of the best views in Minneapolis
- Easy access to and from the freeways
- Located at the edge of the Central Business District
- Fitness room on the 24th floor
- Ramp parking: 1,190 spaces (730 above ground, 460 below ground)
- Monthly parking rate: Starting at \$155/month
- Reserved upper-level parking rate: \$248/month
- Reserved lower-level parking rate: \$272/month
- Top companies include Target, US Bancorp, Xcel Energy, Thrivent, Ameriprise Financial
- Total Population: 500,306
- Average HH Income: \$114,824
- Housing Units: 225,858



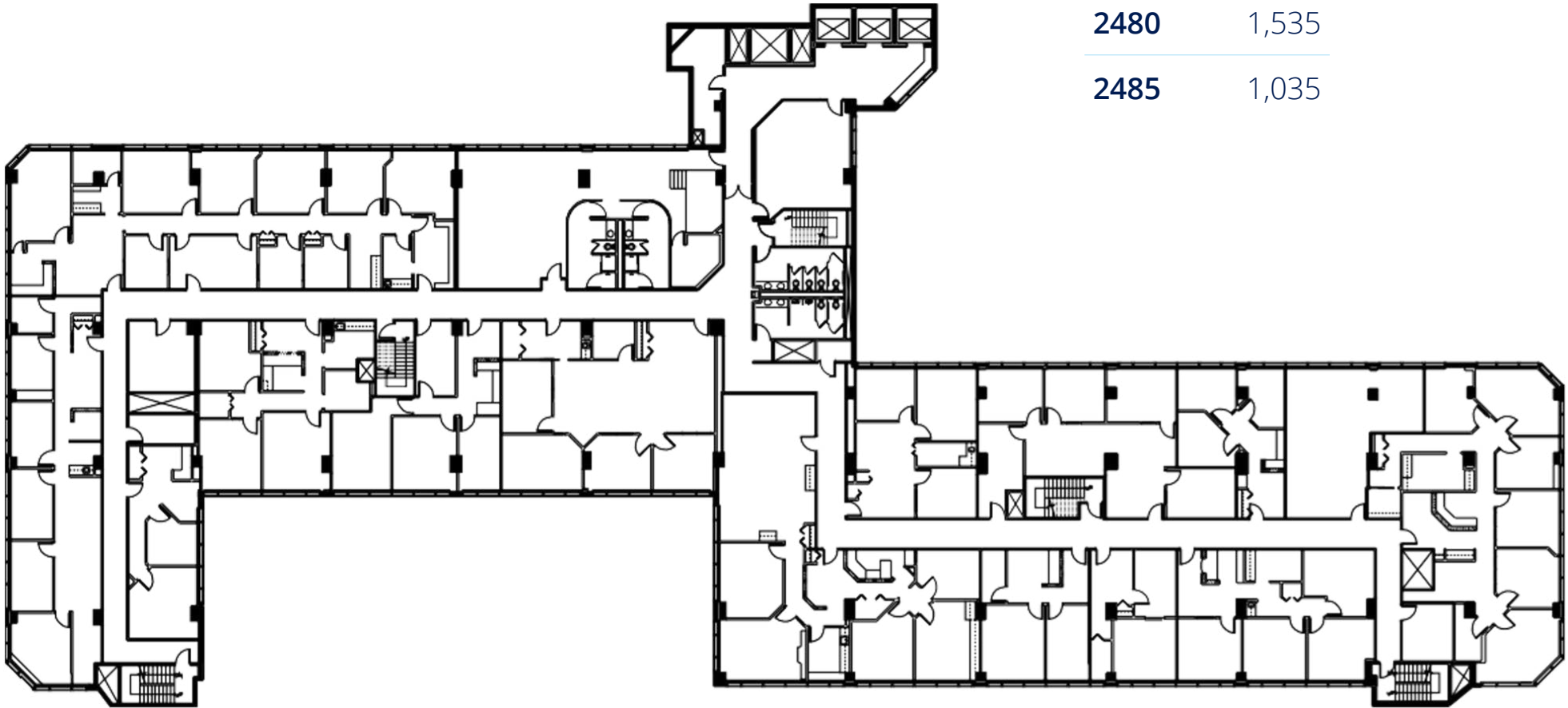
# Centre Village Offices

## Property Profile



# Centre Village Offices

## 24th Floor Plan

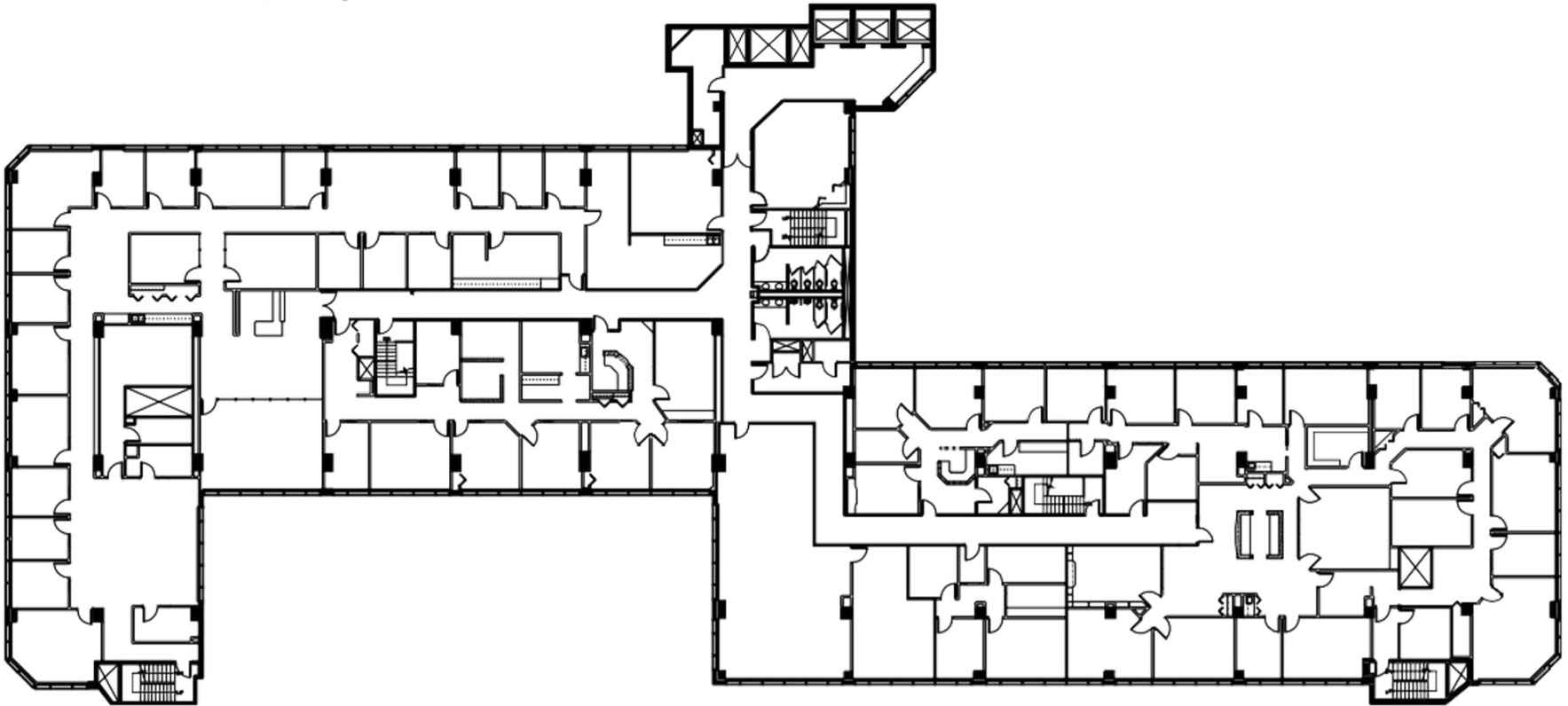


Suite	RSF
2400	1,900
2440	2,625
2472	859
2475	707
2480	1,535
2485	1,035

# Centre Village Offices

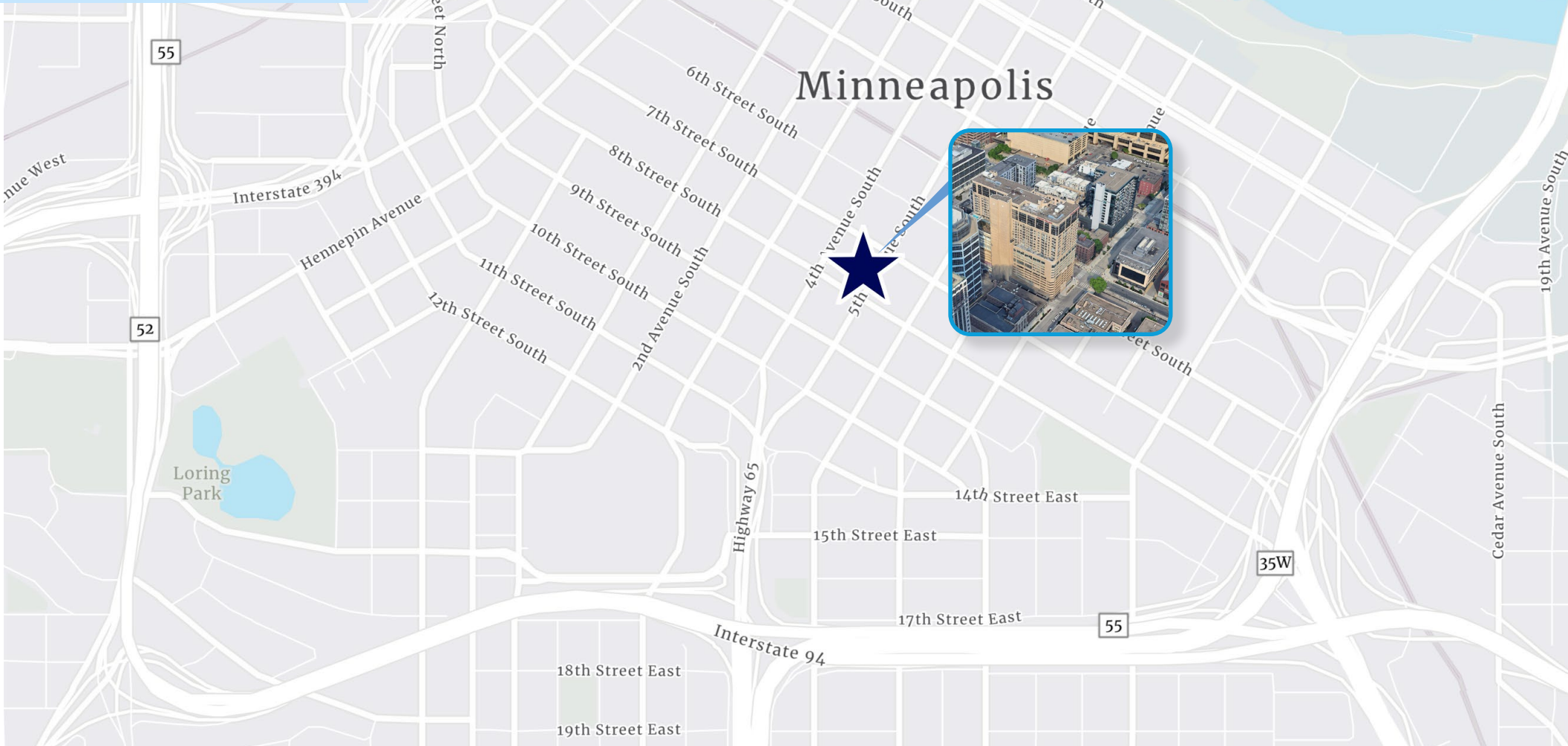
## 25th Floor Plan

Suite	RSF
2510	414
2515	524
2520	2,114
2525	1,011
2545	1,547



# Centre Village Offices

## Location Map



## Demographics *(5 mile radius)*



Total  
**Population**  
500,306



Total  
**Households**  
225,858



Daytime Population:  
**Workers**  
219,000



Avg. Household  
**Income**  
\$114,824