

# LEG&E CENTER

PREMIER  
CLASS A  
OFFICE  
SPACE FOR  
LEASE

220 WEST MAIN STREET  
LOUISVILLE, KY 40202

**CBRE**



# THE CENTER OF IT ALL

The LG&E Center is one of Louisville's most prominent Class A office towers, strategically located in the heart of Downtown Louisville and easily accessible from I-64 via the 3rd Street ramp. The stunning Class A office building features a beautiful glass and granite facade and offers dramatic views of downtown Louisville and the Ohio River. A large plaza with walled flower gardens and shade trees provides a serene and peaceful setting for casual meetings.

Bordered on the north and south by Main and Market Streets, and on the east and west by 2nd and 3rd Streets, the LG&E Center is steps away from award winning dining, hotels, shopping, and entertainment. Located in the Arena District directly across the street from the KFC Yum! Center, which hosts U of L basketball games and numerous concerts and other events. One block to the south is the Kentucky International Convention Center, which is a hub of activity in the downtown area. Unique attractions such as the Urban Bourbon Trail, museums, sporting events, Fourth Street Live, and the NuLu district are all nearby.

**465-SPACE PARKING  
GARAGE ADJACENT**

**UPSCALE  
LOBBY**

**OUTDOOR  
COURTYARD**

**ENERGY STAR  
CERTIFIED**

**ON-SITE PROPERTY  
MANAGEMENT**

**ON-SITE  
SECURITY**

**CONVENIENT  
INTERSTATE ACCESS**

**EV CHARGING  
STATION**

**EXCEPTIONAL  
RIVER VIEWS**



# THE BUILDING



287,990 Square Feet  
23 Stories



Upscale Lobby

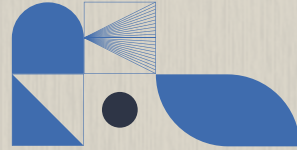


Convenient access to all  
downtown interstates



Close proximity to  
Marriott Hotel and  
numerous restaurants in  
the Arena District





## THE OPPORTUNITY



537± to 14,494± SF available



Efficient layout with good combination of private offices and open area



Competitive rental rates



Class A finishes throughout



River views



Market-ready suite available



# ON-SITE AMENITIES



Outdoor Courtyard



On-site property management



On-site security



EV charging station



465-space parking garage adjacent



Wi-Fi hotspot



# UNBEATABLE LOCATION



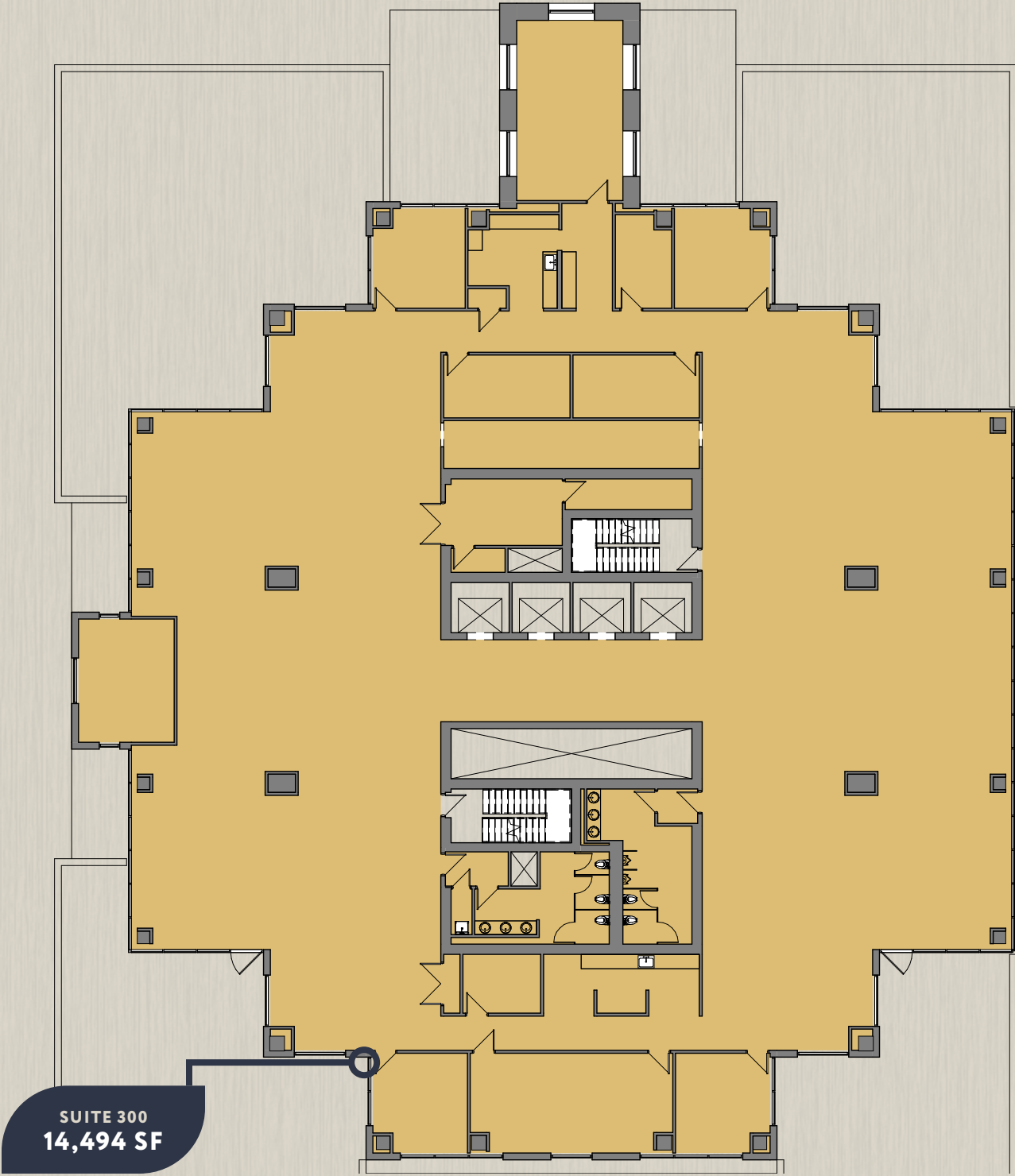
# FLOOR PLANS

## 1ST FLOOR



# FLOOR PLANS

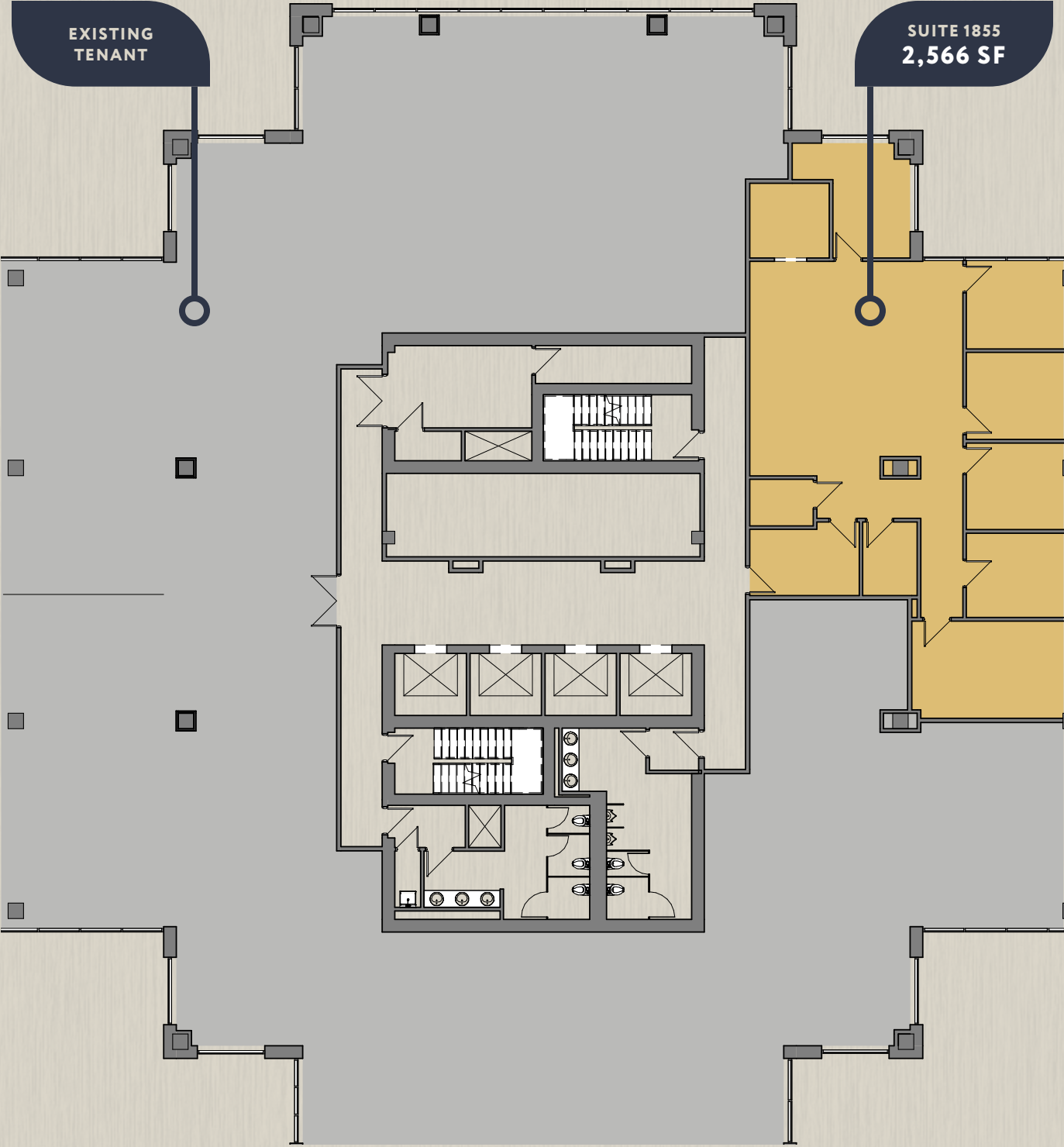
## 3RD FLOOR





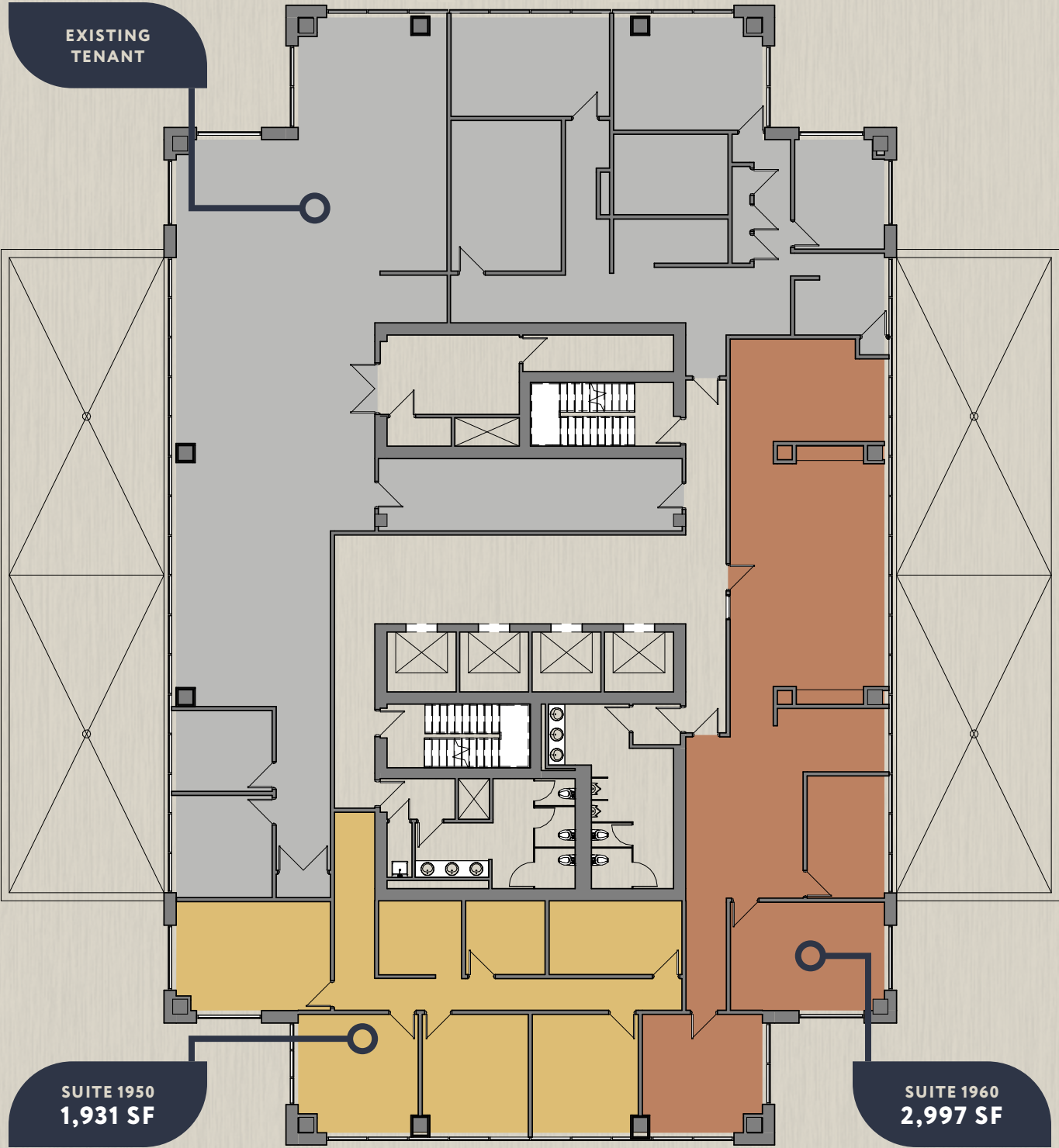
# FLOOR PLANS

## 18TH FLOOR



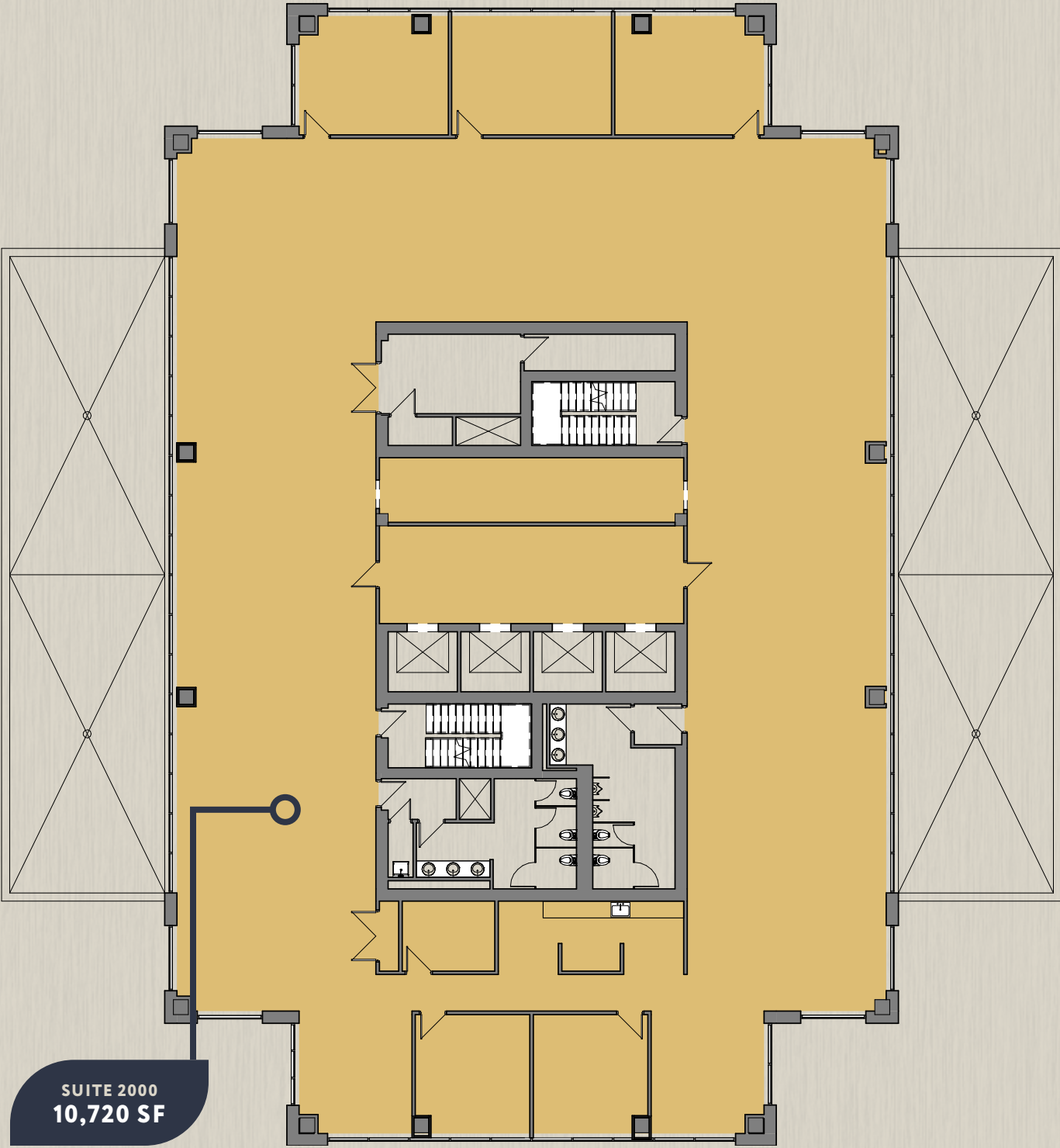
# FLOOR PLANS

## 19TH FLOOR



# FLOOR PLANS

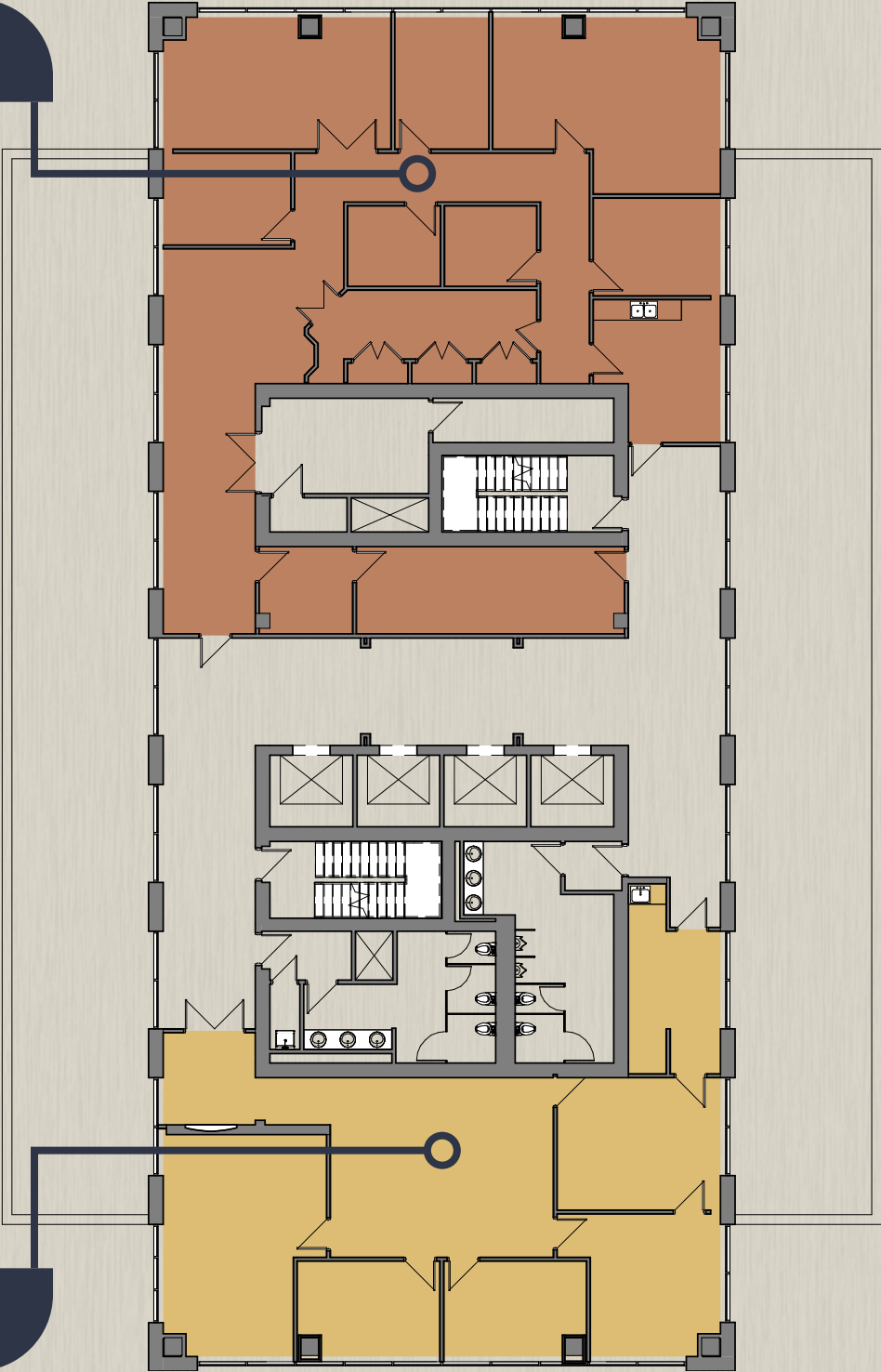
## 20TH FLOOR



# FLOOR PLANS

## 22ND FLOOR

SUITE 2200  
3,284 SF



SUITE 2250  
2,240 SF



# LG&E CENTER

---

MICHAEL SOMERVELL, CCIM

**FIRST VICE PRESIDENT**

+1 502 412 7625

michael.somervell@cbre.com

DAVID L. HARDY, CCIM

**MANAGING DIRECTOR**

+1 502 412 7644

david.hardy@cbre.com

---

**CBRE**

©2024 CBRE, Inc. All rights reserved. This information has been obtained from sources believed reliable, but has not been verified for accuracy or completeness. You should conduct a careful, independent investigation of the property and verify all information. Any reliance on this information is solely at your own risk. CBRE and the CBRE logo are service marks of CBRE, Inc. All other marks displayed on this document are the property of their respective owners, and the use of such logos does not imply any affiliation with or endorsement of CBRE. Photos herein are the property of their respective owners. Use of these images without the express written consent of the owner is prohibited. PMStudio\_September2022