

55,234 SF Available For Sublease



2906 Corporate Way

Palmetto, FL 34221



**55,234 SF
Available**



**Immediate
Access to I-275**



**Fully Air
Conditioned**



**24' Clear
Height**



**2.2/1,000
Parking Ratio**

Please contact

John C. Dunphy, CCIM, SIOR
Jones Lang LaSalle Brokerage, Inc., a licensed real estate broker
727 744 2356
johnc.dunphy@am.jll.com



Property Specifications

2906 Corporate Way, Palmetto, FL 34221

55,234
SQUARE FEET
AVAILABLE

± 9,000
SQUARE FOOT
OFFICE SPACE

3
DOCK-HIGH
DOORS

1
GRADE-LEVEL
DOOR

24'
CLEAR
HEIGHT

3
PHASE
POWER

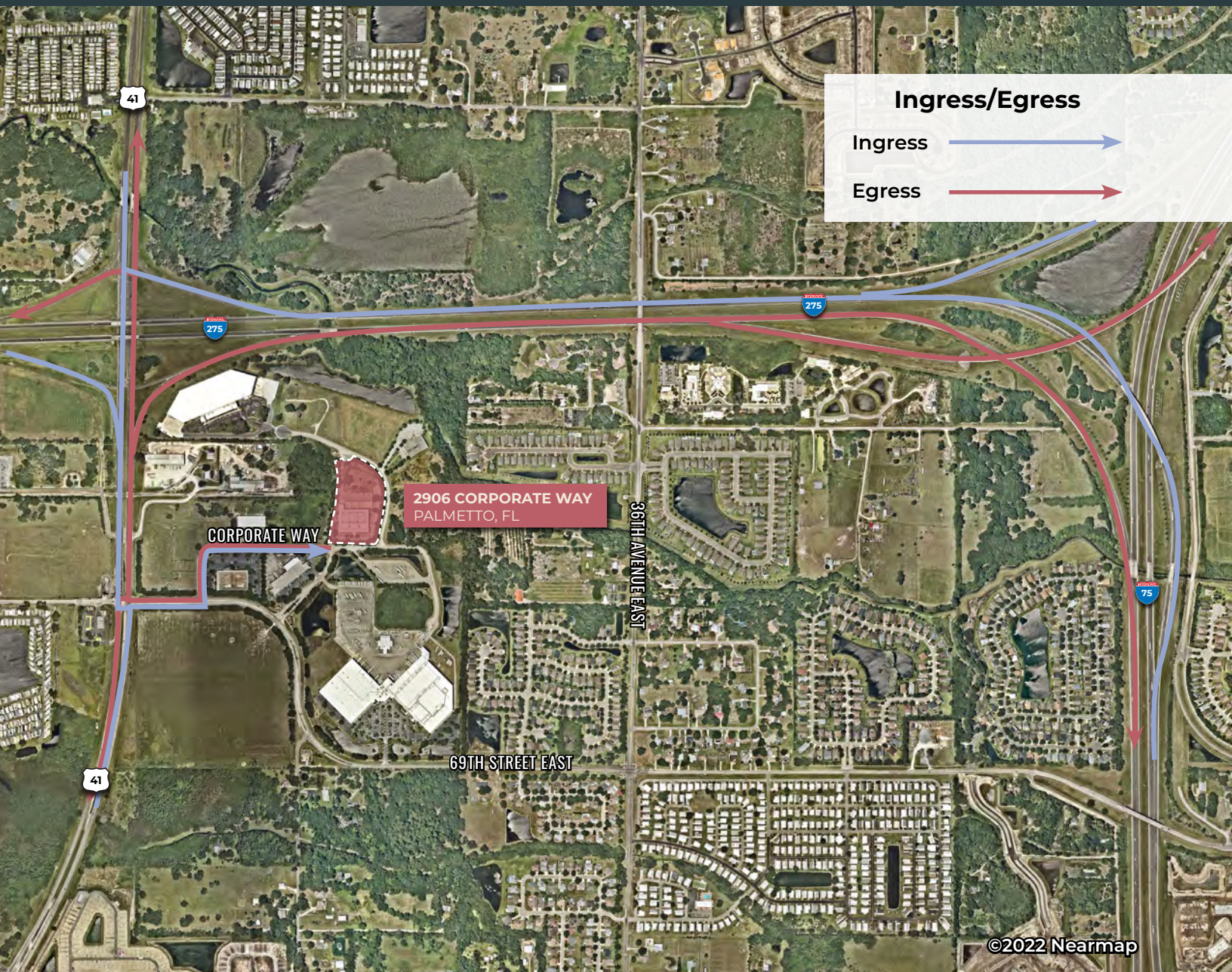
100%
AIR
CONDITIONED

5.9
ACRES



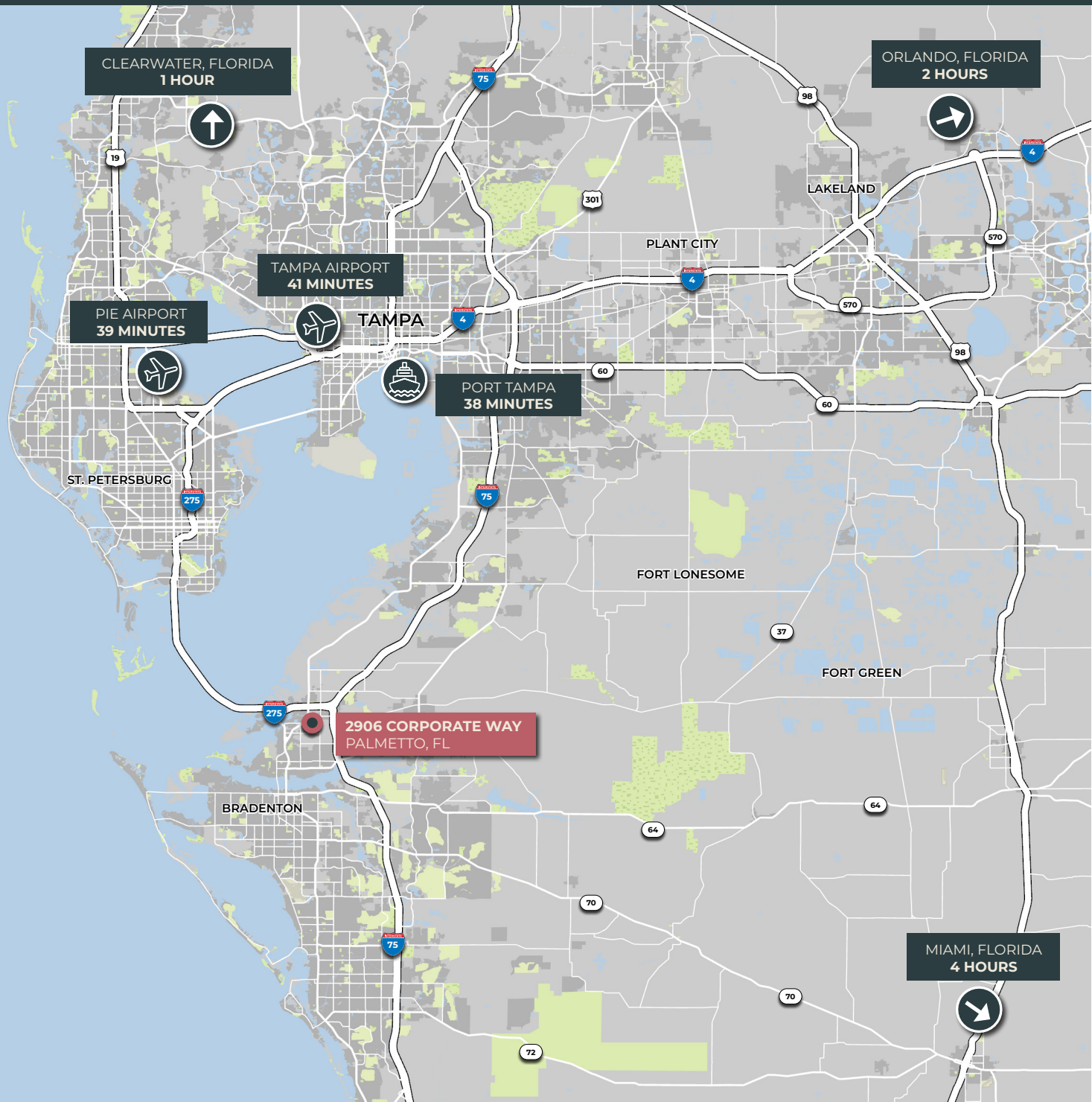
Immediate Access to Interstate 275

2906 Corporate Way, Palmetto, FL 34221



Premier Regional Connectivity

2906 Corporate Way, Palmetto, FL 34221



KBCADVISORS

Although information has been obtained from sources deemed reliable, neither Owner nor JLL makes any guarantees, warranties or representations, express or implied, as to the completeness or accuracy as to the information contained herein. Any projections, opinions, assumptions or estimates used are for example only. There may be differences between projected and actual results, and those differences may be material. The Property may be withdrawn without notice. Neither Owner nor JLL accepts any liability for any loss or damage suffered by any party resulting from reliance on this information. If the recipient of this information has signed a confidentiality agreement regarding this matter, this information is subject to the terms of that agreement. ©2022. Jones Lang LaSalle IP, Inc. All rights reserved.