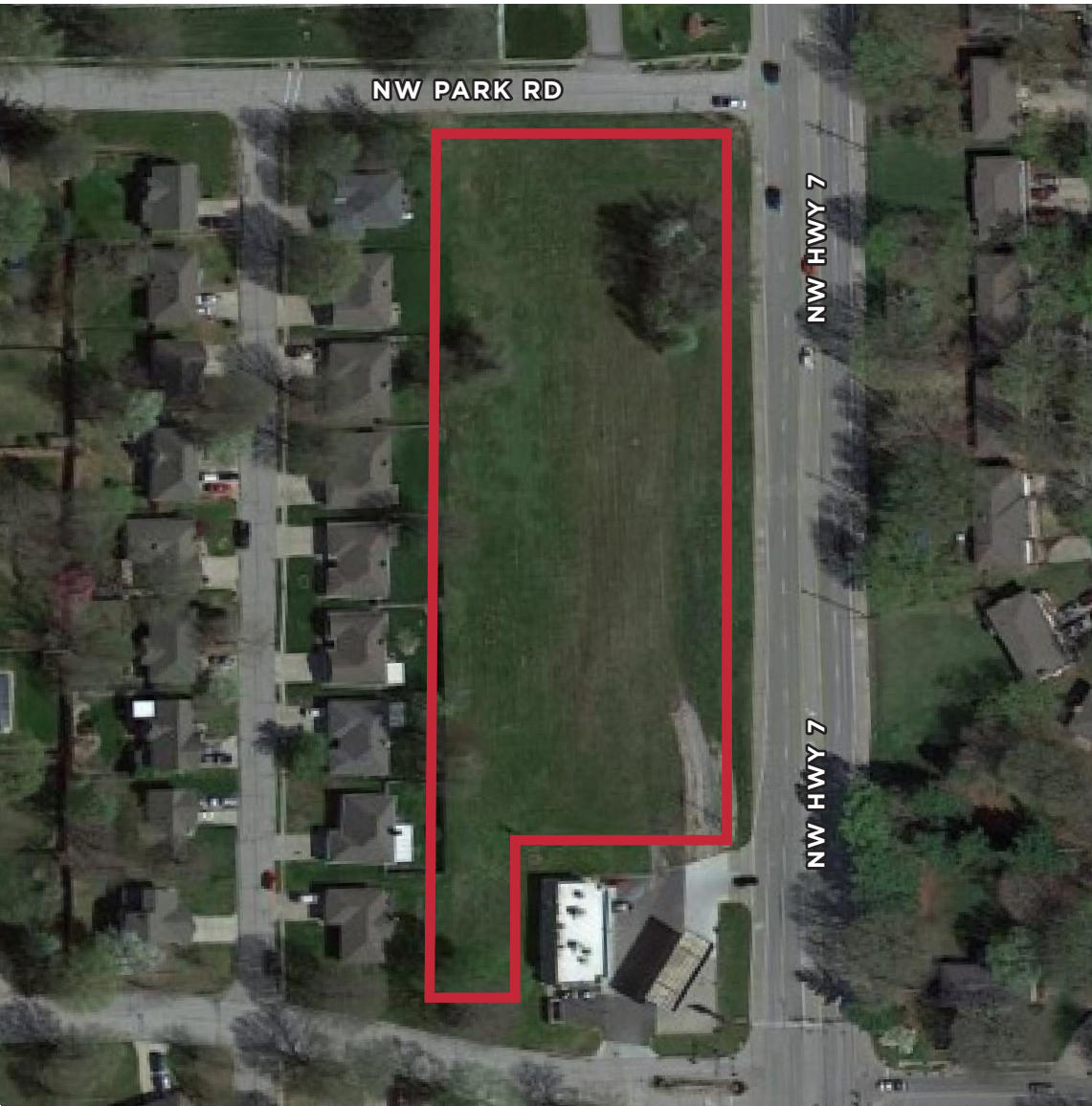


LAND

FOR SALE



2451 NW PARK RD

BLUE SPRINGS, MO 64013

Property Details

- \$625,000 (\$4.80 PSF)
- 3+/- acres of land
- Commercial zoning
- 548' fronting Highway 7
- Level terrain

\$625,000



REECE

COMMERCIAL REAL ESTATE

a Berkshire Hathaway Affiliate

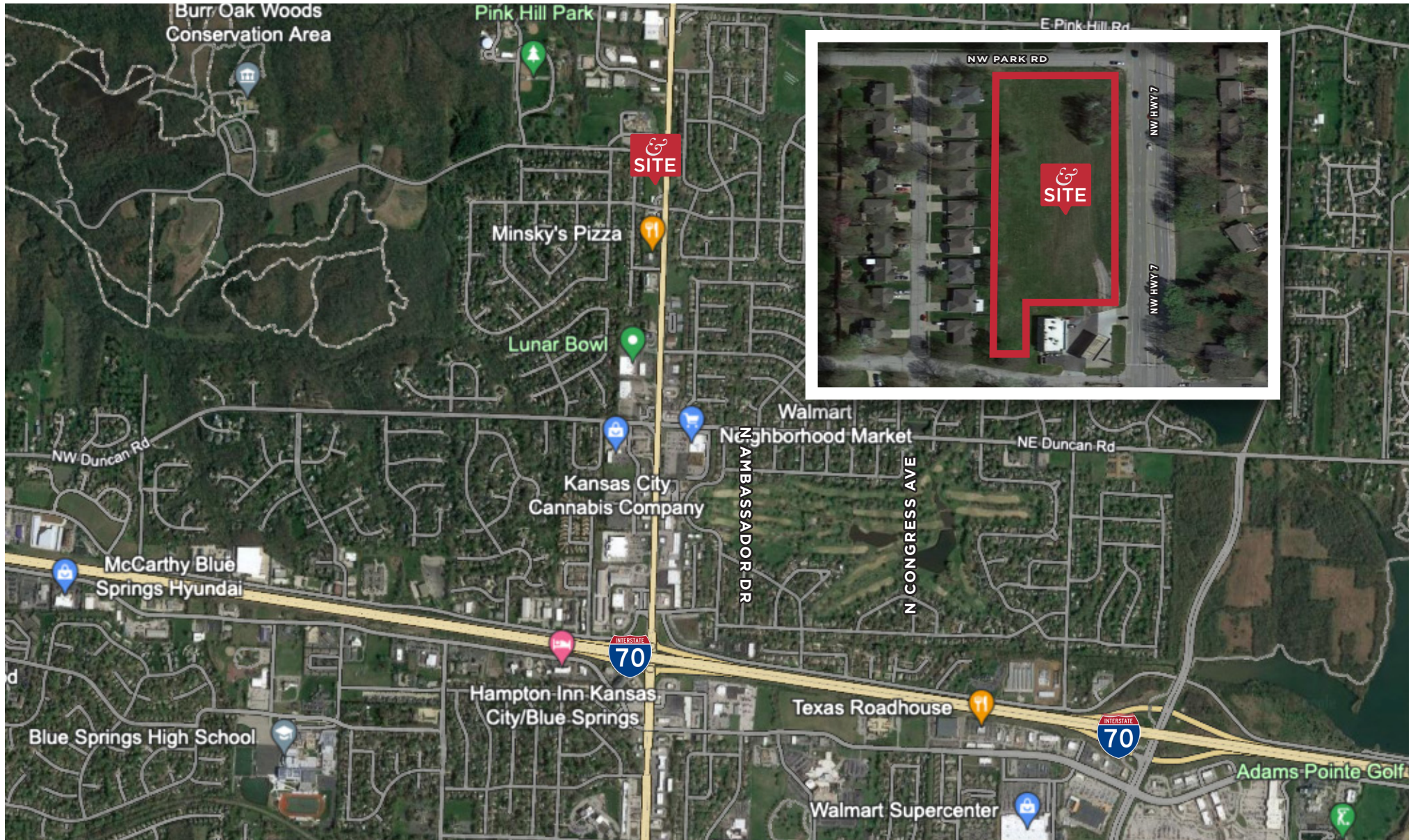
JOHN SWEENEY

913.945.3718

john@reececommercial.com

2451 NW PARK RD, BLUE SPRINGS, MO 64013

FOR SALE



The Information Above Has Been Obtained From Sources Believed Reliable. While We Do Not Doubt Its Accuracy We Have Not Verified It And Make No Guarantee, Warranty Or Representation About It. It Is Your Responsibility To Independently Confirm Its Accuracy And Completeness. Any Projections, Opinions, Assumptions, Or Estimates Used Are For Example Only And Do Not Represent The Current Or Future Performance Of The Property. You And Your Advisors Should Conduct A Careful, Independent Investigation Of The Property To Determine To Your Satisfaction The Suitability Of The Property For Your Needs. © 2023

