

# SALE/LEASE

**2420 Grenoble Rd.**  
**Richmond, VA 23294**



## Exclusive Agent:

**BYRON HOLMES, CCIM, SIOR**  
(804) 521-1448  
byron@porterinc.com

## HIGHLIGHTS

- 11,330 SF Office/Warehouse
- 0.64 Acres
- Zoned M-1
- Covered Loading Dock
- Heat & AC in Warehouse
- 600amps, 240 volt 3-phase
- Proximate to I-64 & Glenside Dr.
- 12' Clear Height in Warehouse
- FOR LEASE: \$10.50/SF NET
- FOR SALE: Call for Information

4801 Radford Avenue | P.O. Box 6482  
Richmond, VA 23230  
www.porterinc.com  
804-353-7994

**PORTER**  
R E A L T Y

**CORFAC**  
INTERNATIONAL

**SIOR**

**CCIM**

This information has been prepared by Porter Realty Company, Inc. for marketing purposes only. No representation or warranty, expressed or implied, is made as to the accuracy of the foregoing information. Terms of sale or lease and availability are subject to change or withdrawal without notice.



# PROPERTY PHOTOS

2420 Grenoble Road | Richmond, VA 23294



**Byron Holmes, CCIM, SIOR**  
(804) 521-1448  
byron@porterinc.com



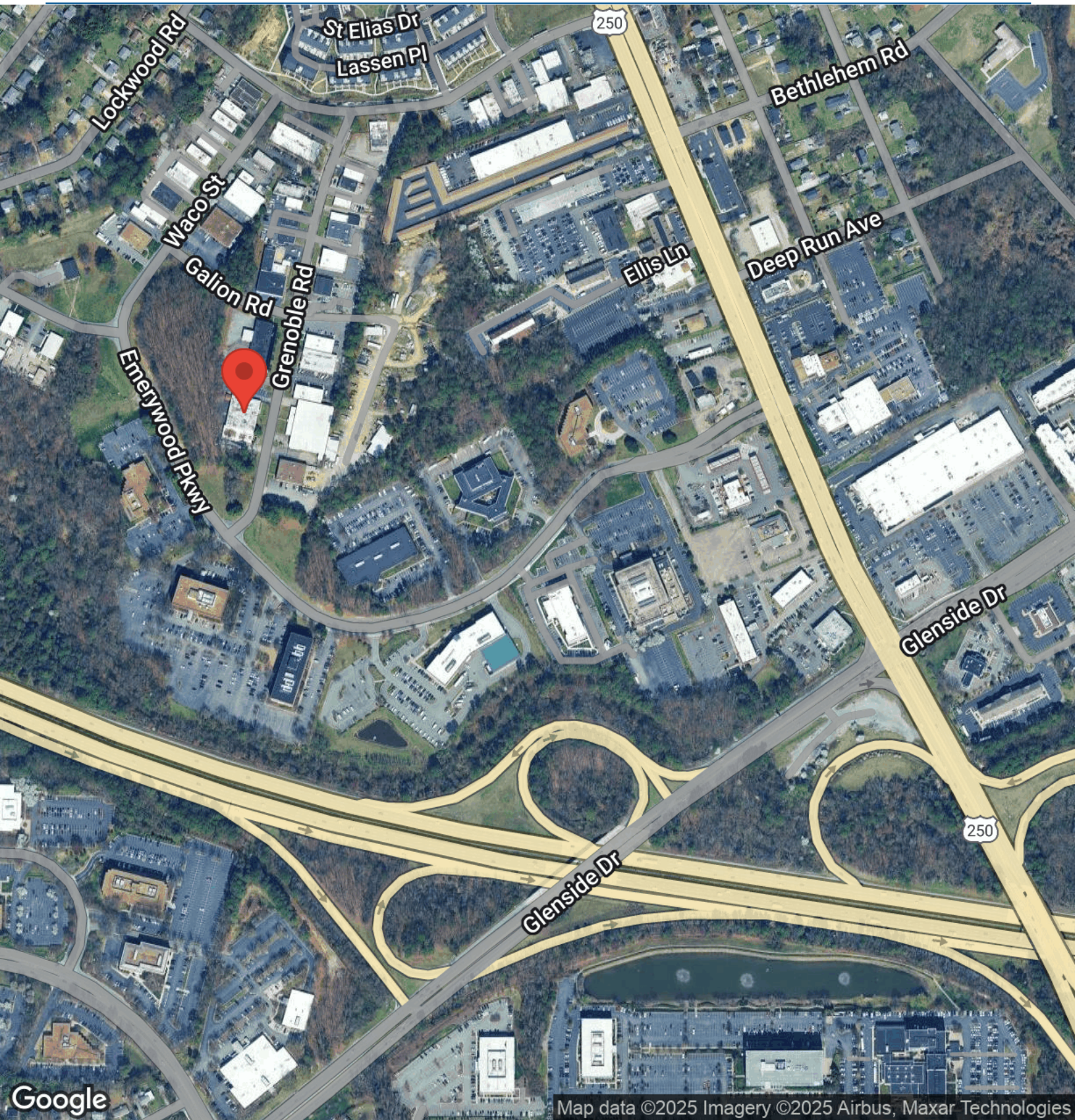
Porter Realty Company, Inc. | 4801 Radford Avenue | P.O. Box 6482 | Richmond, VA 23230 | www.porterinc.com

This information has been prepared by Porter Realty Company, Inc. for marketing purposes only. No representation or warranty, expressed or implied, is made as to the accuracy of the foregoing information. Terms of sale or lease and availability are subject to change or withdrawal without notice.



# AERIAL MAP

2420 Grenoble Road | Richmond, VA 23294



**Byron Holmes, CCIM, SIOR**  
(804) 521-1448  
byron@porterinc.com



Porter Realty Company, Inc. | 4801 Radford Avenue | P.O. Box 6482 | Richmond, VA 23230 | www.porterinc.com

This information has been prepared by Porter Realty Company, Inc. for marketing purposes only. No representation or warranty, expressed or implied, is made as to the accuracy of the foregoing information. Terms of sale or lease and availability are subject to change or withdrawal without notice.