

# 730 Branch Drive | Alpharetta, GA 30004



## INDUSTRIAL BUILDING FOR SALE

### Property Features:

- ▶ Total SF: ±30,000
- ▶ Office SF: 3,500 SF
- ▶ Clear Height : 13' - 16'
- ▶ Dock Highs: 4
- ▶ Drive-Ins: 1
- ▶ Acreage: ±2.87 Acres
- ▶ Truck Court: ± 90' Deep
- ▶ Building Type: Metal
- ▶ Building Depth: ±100' wide x ±300' long
- ▶ Zoning: M1 - Light Industrial
- ▶ Power: Heavy Power
- ▶ Sprinklered: Yes



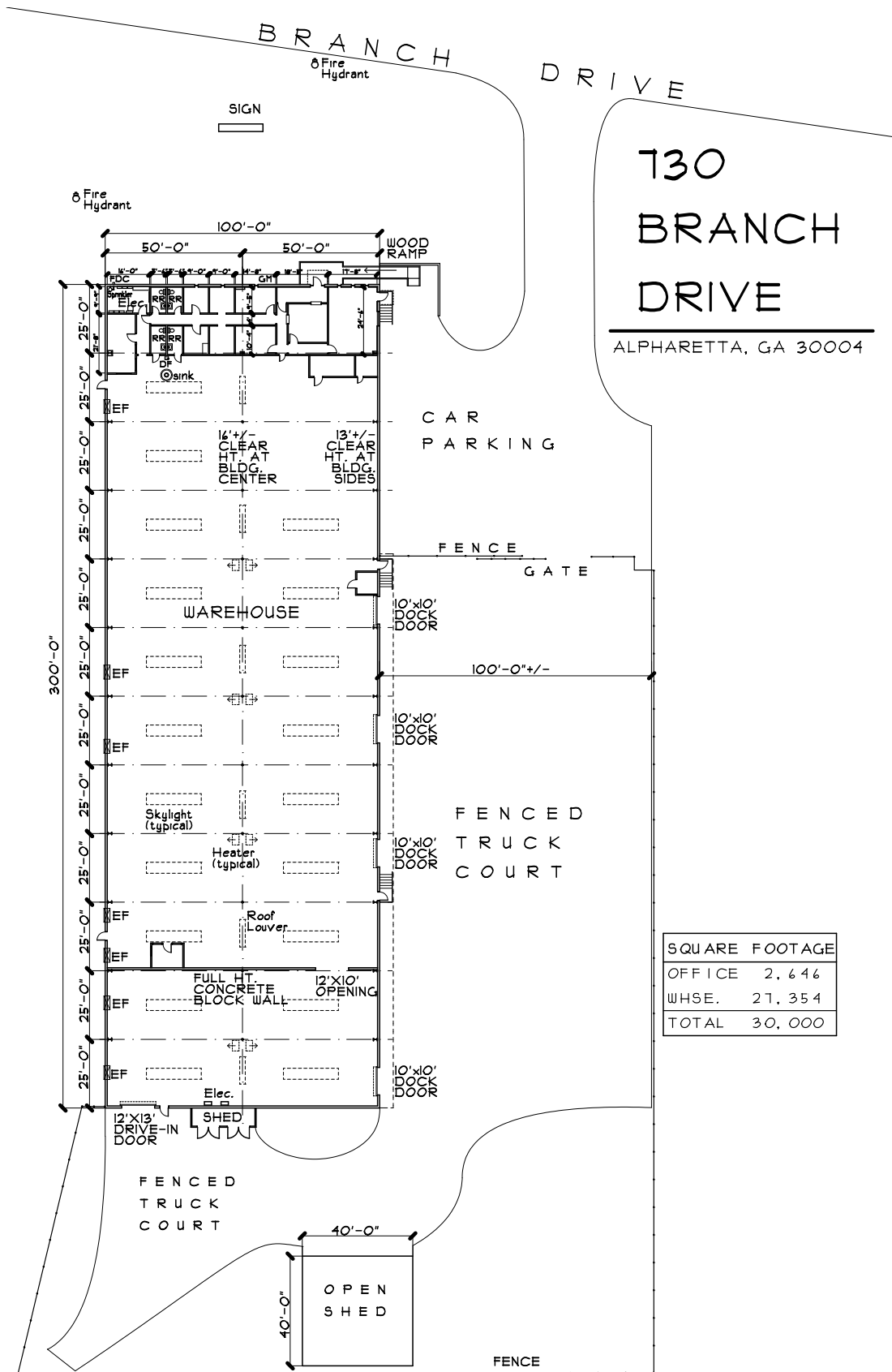
1600 NORTHSIDE DRIVE NW  
Suite 100  
ATLANTA, GA 30318  
404.352.1882  
WHNRE.COM

Jamie Hargather | Partner  
C: 404.944.4456  
jhargather@whnre.com

Joseph Rogers | Partner  
C: 404.550.0817  
jrogers@whnre.com

John Flor | Associate  
C: 404.663.8979  
jflor@whnre.com

# 730 Branch Drive | Alpharetta, GA 30004



**730  
BRANCH  
DRIVE**  
ALPHARETTA, GA 30004

SQUARE FOOTAGE	
OFFICE	2,646
WHSE.	21,354
<b>TOTAL</b>	<b>30,000</b>

**WILSON HULL & NEAL**  
REAL ESTATE, LLC  
1600 NORTHSIDE DRIVE NW  
Suite 100  
ATLANTA, GA 30318  
404.352.1882  
WHNRE.COM

Jamie Hargather | Partner  
C: 404.944.4456  
jhargather@whnre.com

Joseph Rogers | Partner  
C: 404.550.0817  
jrogers@whnre.com

John Flor | Associate  
C: 404.663.8979  
jflor@whnre.com



# 730 Branch Drive | Alpharetta, GA 30004



**WILSON  
HULL  
& NEAL**  
REAL ESTATE, LLC

1600 NORTHSIDE DRIVE NW  
Suite 100  
ATLANTA, GA 30318  
404.352.1882  
WHNRE.COM

Jamie Hargather | Partner  
C: 404.944.4456  
jhargather@whnre.com

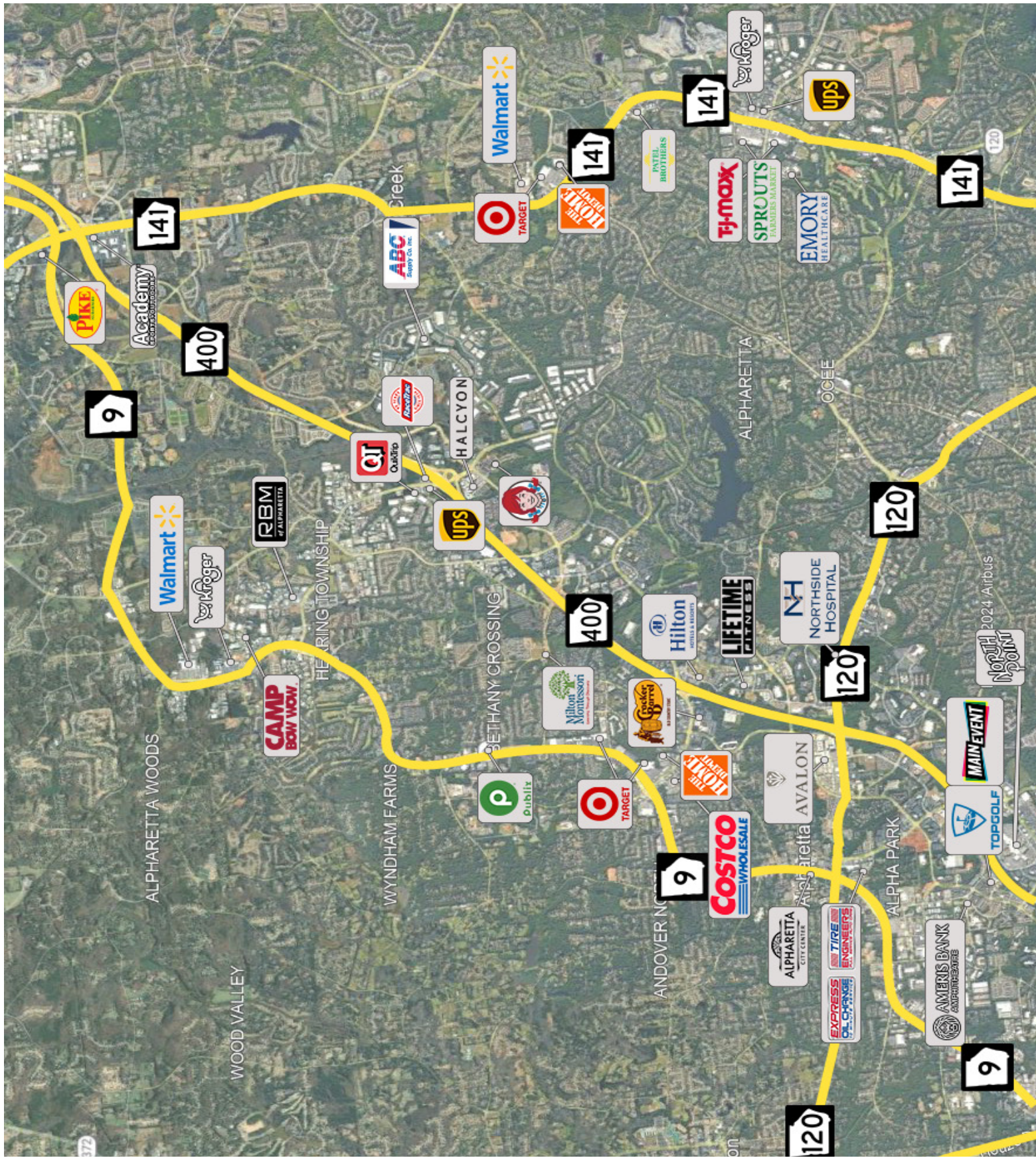
Joseph Rogers | Partner  
C: 404.550.0817  
jrogers@whnre.com

John Flor | Associate  
C: 404.663.8979  
jflor@whnre.com

Every effort has been made to provide accurate information, but no liability is assumed for errors or omissions.



# 730 Branch Drive | Alpharetta, GA 30004



**WILSON HULL & NEAL**  
 REAL ESTATE, LLC  
 1600 NORTHSIDE DRIVE NW  
 Suite 100  
 ATLANTA, GA 30318  
 404.352.1882  
 WHNRE.COM

Jamie Hargather | Partner  
 C: 404.944.4456  
 jhargather@whnre.com

Joseph Rogers | Partner  
 C: 404.550.0817  
 jrogers@whnre.com

John Flor | Associate  
 C: 404.663.8979  
 jflor@whnre.com

Every effort has been made to provide accurate information, but no liability is assumed for errors or omissions.