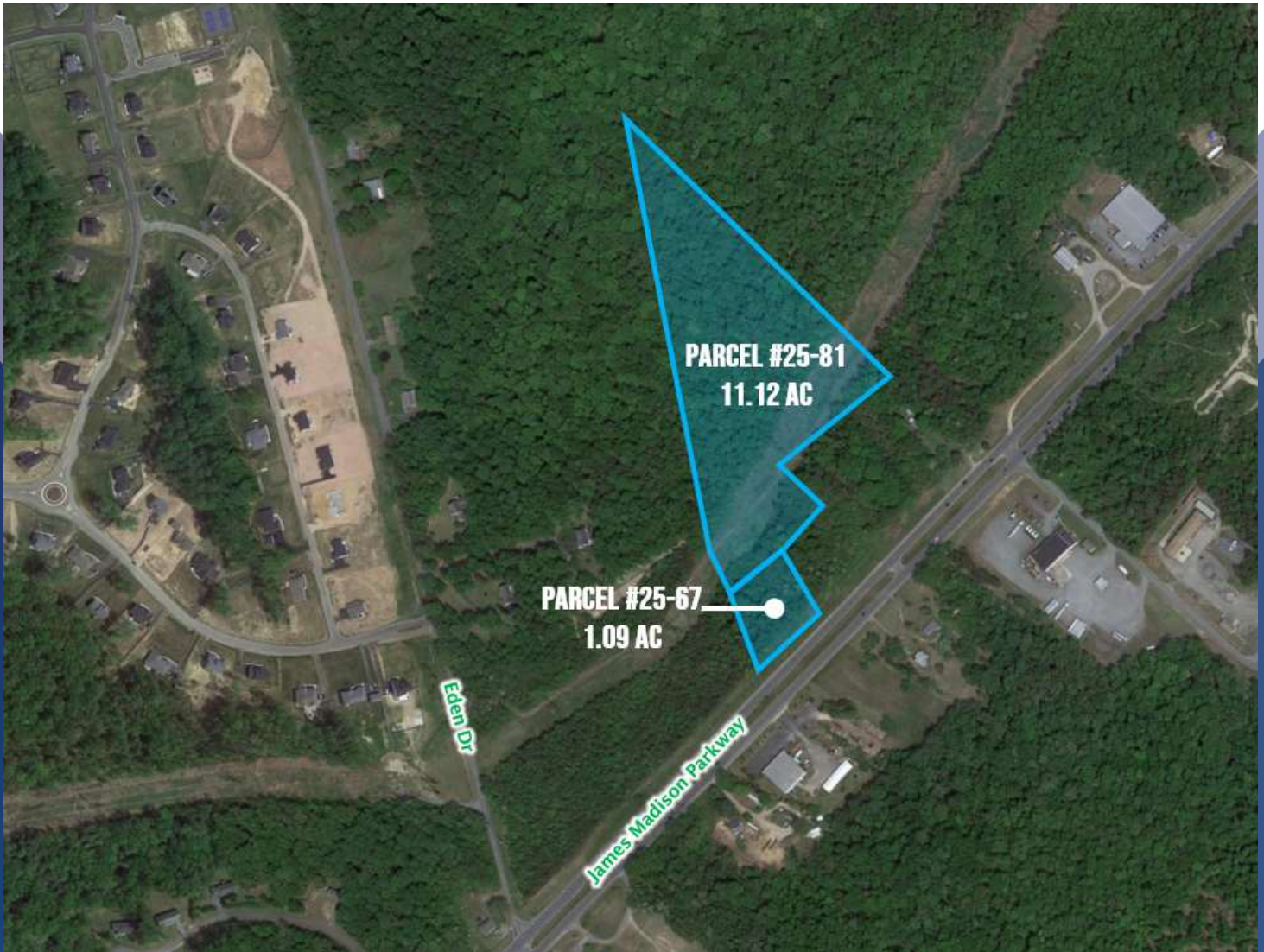


# SALE

## 12.21 ACRES ON JAMES MADISON PARKWAY

James Madison Hwy King George, VA 22485



**SALE PRICE**

**\$220,000**

**Donny Self, CCIM**

(540) 842-6202

©2023 Coldwell Banker. All Rights Reserved. Coldwell Banker Commercial® and the Coldwell Banker Commercial logos are trademarks of Coldwell Banker Real Estate LLC. The Coldwell Banker® System is comprised of company owned offices which are owned by a subsidiary of Anywhere Advisors LLC and franchised offices which are independently owned and operated. The Coldwell Banker System fully supports the principles of the Equal Opportunity Act.



**COLDWELL BANKER**  
**COMMERCIAL**  
**ELITE**

# SALE

## 12.21 ACRES ON JAMES MADISON PARKWAY

James Madison Hwy King George, VA 22485

### CONFIDENTIALITY AGREEMENT

This offering has been prepared solely for informational purposes. It is designed to assist a potential investor in determining whether it wishes to proceed with an in-depth investigation of the subject property. While the information contained herein is from sources deemed reliable, it has not been independently verified by the Coldwell Banker Commercial affiliate or by the Seller.

The projections and pro forma budget contained herein represent best estimates on assumptions considered reasonable under the circumstances. No representations or warranties, expressed or implied, are made that actual results will conform to such projections.

This document is provided subject to errors, omissions and changes in the information and is subject to modification or withdrawal. The contents herein are confidential and are not to be reproduced without the express written consent.

Interested buyers should be aware that the Seller is selling the Property "AS IS" CONDITION WITH ALL FAULTS, WITHOUT REPRESENTATIONS OR WARRANTIES OF ANY KIND OR NATURE. Prior to and/or after contracting to purchase, as appropriate, buyer will be given a reasonable opportunity to inspect and investigate the Property and all improvements thereon, either independently or through agents of the buyer's choosing.

The Seller reserves the right to withdraw the Property being marketed at any time without notice, to reject all offers, and to accept any offer without regard to the relative price and terms of any other offer. Any offer to buy must be: (i) presented in the form of a non-binding letter of intent; (ii) incorporated in a formal written contract of purchase and sale to be prepared by the Seller and executed by both parties; and (iii) approved by Seller and such other parties who may have an interest in the Property. Neither the prospective buyer nor Seller shall be bound until execution of the contract of purchase and sale, which contract shall supersede prior discussions and writings and shall constitute the sole agreement of the parties.

Prospective buyers shall be responsible for their costs and expenses of investigating the Property and all other expenses, professional or otherwise, incurred by them.

---

**Donny Self, CCIM**  
(540) 842-6202



**COLDWELL BANKER**  
**COMMERCIAL**  
ELITE



# SALE

## 12.21 ACRES ON JAMES MADISON PARKWAY

James Madison Hwy King George, VA 22485



### PROPERTY DESCRIPTION

12.21 Acres for Sale on James Madison Parkway in King George County

### PROPERTY HIGHLIGHTS

- Unlock the potential of this high-visibility location on James Madison Parkway!
- Parcel #25-67 – 1.09 Acres (Zoned C-2) – Perfect for commercial development! Ideal for retail, office space, or service businesses.
- Parcel #25-81 – 11.12 Acres (Zoned A-2) – Versatile land with expansion potential. Ideal for agricultural use, residential development, or possible rezoning for commercial opportunities.
- High-traffic area with excellent visibility Endless development possibilities
- Don't miss out on this prime real estate opportunity! Contact us today to discuss how this property can work for your business or investment portfolio!

### OFFERING SUMMARY

Sale Price:	\$220,000
Lot Size:	3,454,874 SF

DEMOGRAPHICS	1 MILE	3 MILES	5 MILES
Total Households	198	1,818	4,983
Total Population	483	4,298	12,382
Average HH Income	\$111,799	\$103,463	\$95,398

**Donny Self, CCIM**  
(540) 842-6202

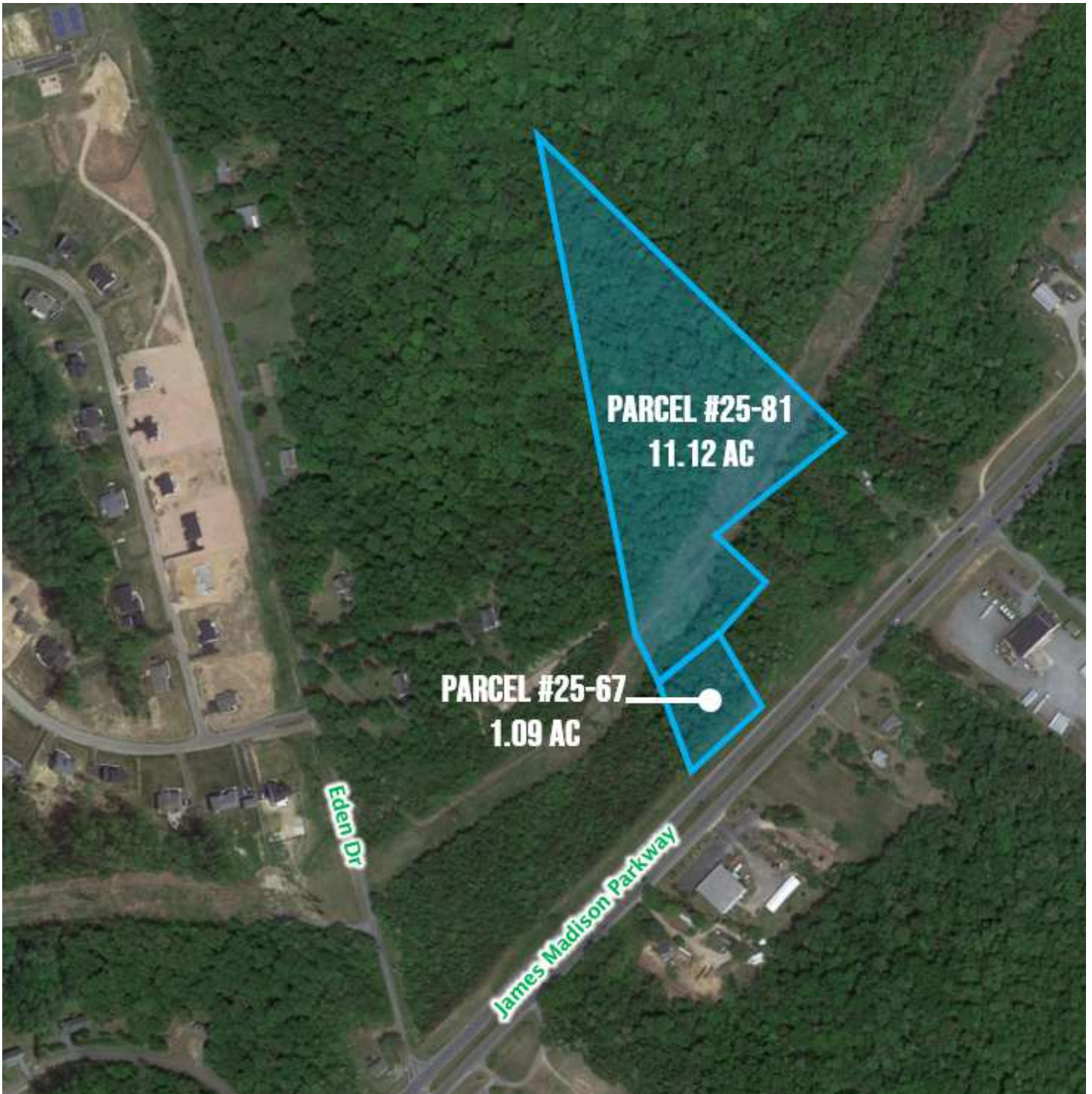


**COLDWELL BANKER**  
**COMMERCIAL**  
ELITE

# SALE

## 12.21 ACRES ON JAMES MADISON PARKWAY

James Madison Hwy King George, VA 22485



**Donny Self, CCIM**  
(540) 842-6202



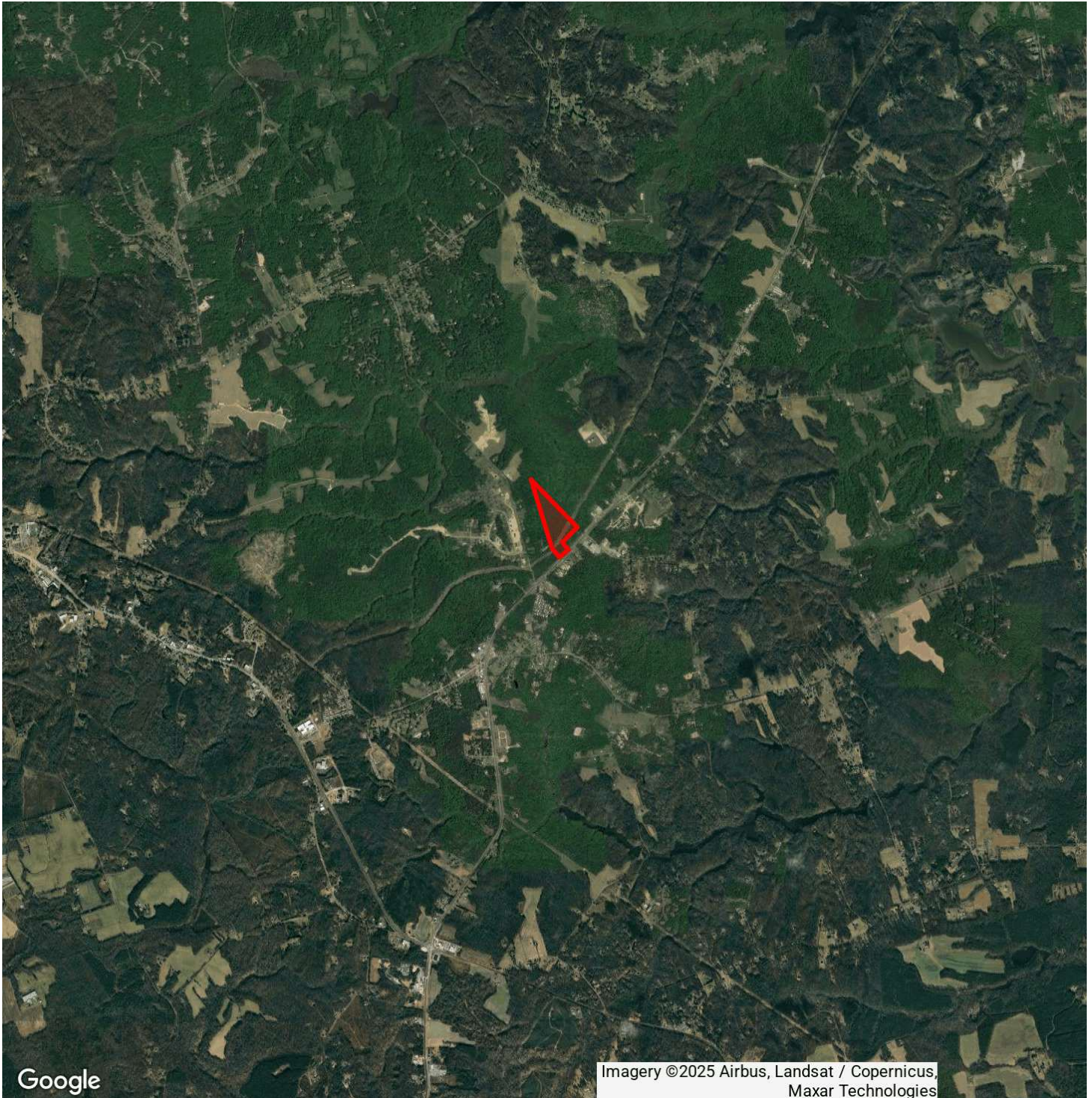
**COLDWELL BANKER**  
**COMMERCIAL**  
ELITE



# SALE

## 12.21 ACRES ON JAMES MADISON PARKWAY

James Madison Hwy King George, VA 22485



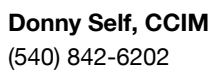
**Donny Self, CCIM**  
(540) 842-6202



**COLDWELL BANKER**  
**COMMERCIAL**  
ELITE



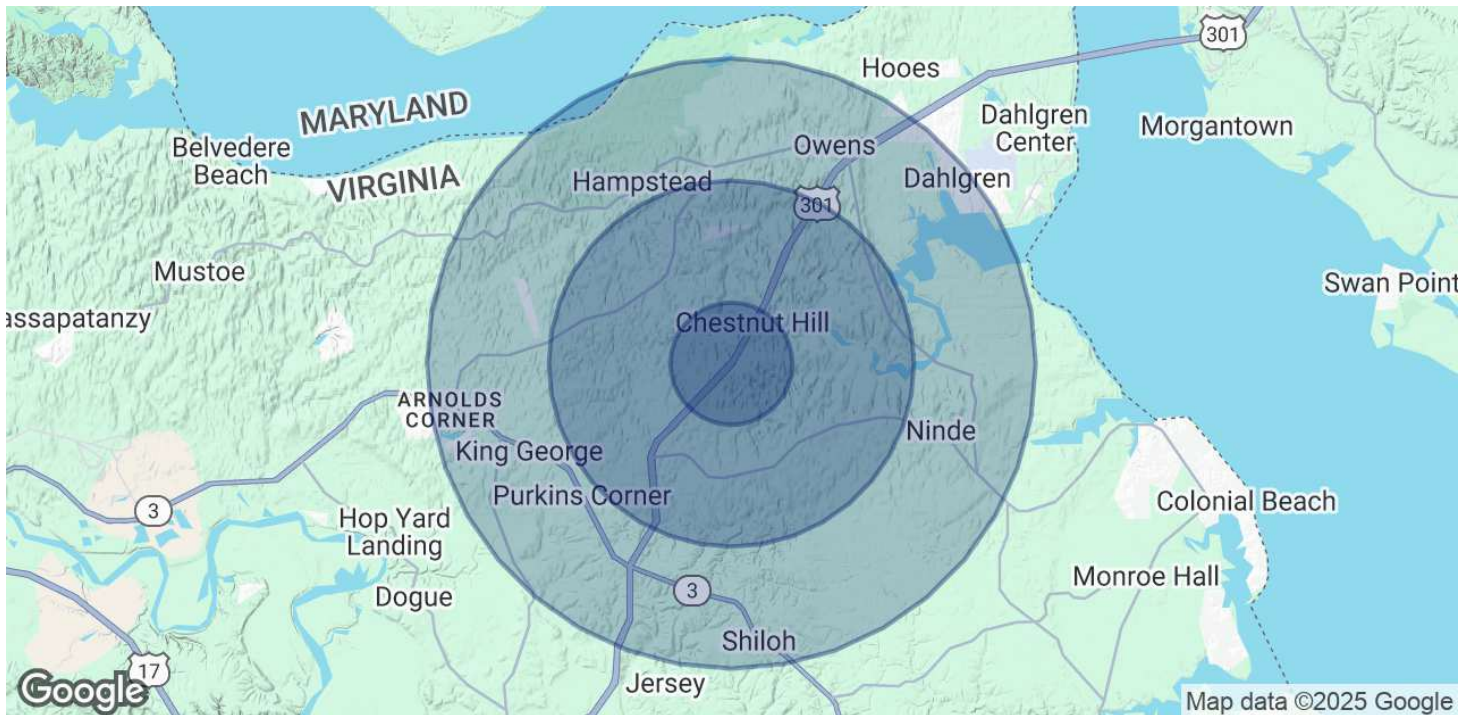
James Madison Hwy King George, VA 22485



# SALE

## 12.21 ACRES ON JAMES MADISON PARKWAY

James Madison Hwy King George, VA 22485



POPULATION	1 MILE	3 MILES	5 MILES
Total Population	483	4,298	12,382
Average Age	41.7	42.5	40.5
Average Age (Male)	42.6	41.6	36.7
Average Age (Female)	41.9	43.4	42

HOUSEHOLDS & INCOME	1 MILE	3 MILES	5 MILES
Total Households	198	1,818	4,983
# of Persons per HH	2.4	2.4	2.5
Average HH Income	\$111,799	\$103,463	\$95,398
Average House Value	\$310,555	\$309,847	\$301,350

2020 American Community Survey (ACS)

**Donny Self, CCIM**  
(540) 842-6202



**COLDWELL BANKER**  
**COMMERCIAL**  
ELITE

# SALE

## 12.21 ACRES ON JAMES MADISON PARKWAY

James Madison Hwy King George, VA 22485



### DONNY SELF, CCIM

Senior Sales Associate

[dself@coldwellbankerelite.com](mailto:dself@coldwellbankerelite.com)

Direct: (540) 842-6202 | Cell: (540) 842-6202

### PROFESSIONAL BACKGROUND

Donny Self – Senior Sales Associate, Coldwell Banker Commercial Elite

With a proven track record of success, Donny Self is a top-performing Senior Sales Associate at Coldwell Banker Commercial Elite. Recognized in the top 2% of Coldwell Banker Commercial (CBC) Sales Associates worldwide, Donny is a results-driven expert specializing in commercial investment sales, acquisitions, retail leasing, and landlord/tenant representation.

Donny's deep industry knowledge and CCIM (Certified Commercial Investment Member) designation position him as a trusted advisor for investors, landlords, and tenants seeking prime commercial opportunities. His ability to negotiate and close high-value deals has earned him multiple accolades, including the CBC Circle of Distinction Silver and Bronze Awards.

His extensive client portfolio includes national and regional brands such as McDonald's, Panera Bread, Verizon, Taco Bell, Firehouse Subs, AutoZone, and more, making him the go-to expert for businesses looking to expand or invest in commercial real estate.

With a strategic mindset, market expertise, and a results-oriented approach, Donny Self is the partner you need to maximize your real estate investments and secure premium locations for your business.

Looking for the right commercial property or investment opportunity? Contact Donny Self today!

### EDUCATION

Donny holds a Bachelor of Science Degree in Business Administration from the University of Mary Washington, and is a native of Fredericksburg.

### MEMBERSHIPS

Mr. Self is an active member of the International Council of Shopping Centers

**Elite**  
990 Bragg Rd  
Fredericksburg, VA 22407  
540.786.1402

**Donny Self, CCIM**  
(540) 842-6202



**COLDWELL BANKER**  
**COMMERCIAL**  
ELITE