

# STEELRIDGE CENTER

2101 Old Columbiana Road Birmingham, AL 35216

**CLASS A OFFICE SPACE AVAILABLE FOR LEASE**

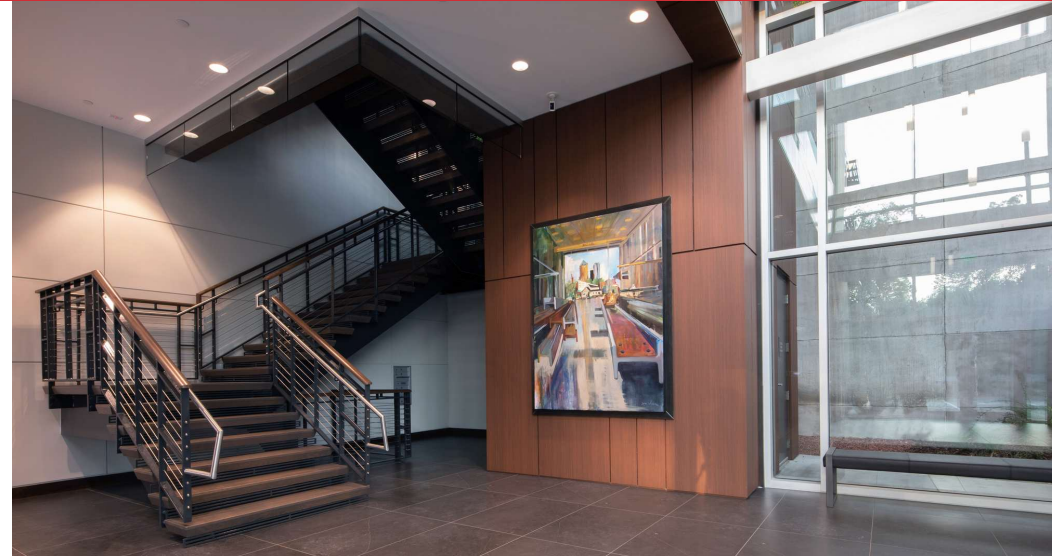


Commercial Real Estate

**Philip Currie, SIOR, CCIM**  
205.313.4369  
[pcurrie@jhberry.com](mailto:pcurrie@jhberry.com)

**Jake Taylor**  
205.313.4377  
[jtaylor@jhberry.com](mailto:jtaylor@jhberry.com)





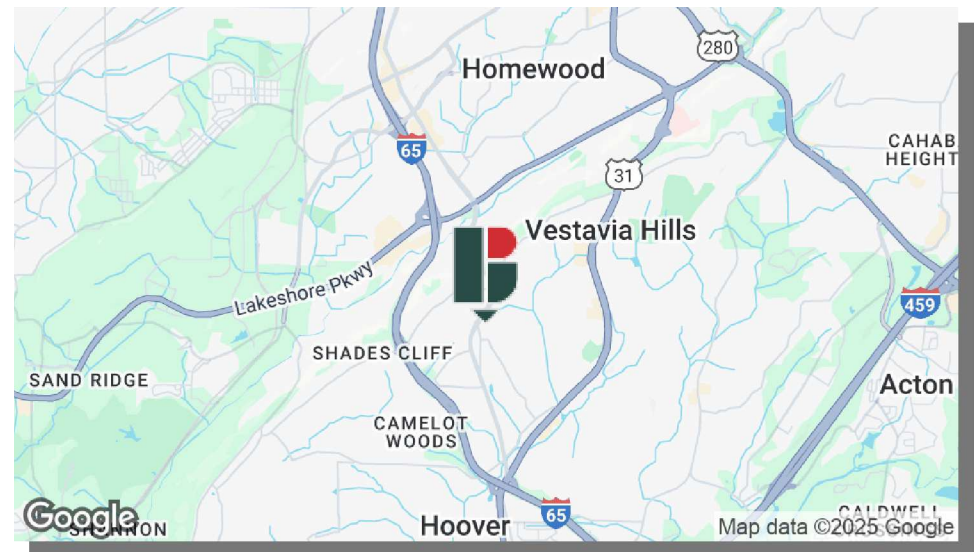
## STEELRIDGE CENTER

2101 OLD COLUMBIANA ROAD, BIRMINGHAM, AL 35216

### PROPERTY FEATURES

- 3,984 SF up to 21,614 SF Available
- New construction in Midtown Submarket
- Class A Office Space
- Customizable floor plans
- Monument Signage Available
- Ample on-site surface and covered parking
- On-site nature trail

LEASE RATE: \$34.00 (FULL SERVICE)



**Philip Currie, SIOR, CCIM**

205.313.4369

pcurrie@jhberry.com

**Jake Taylor**

205.313.4377

jtaylor@jhberry.com





## PROPERTY DESCRIPTION

SteelRidge Center is a four-story, Class A office building located in Birmingham's most sought-after Midtown submarket. Minutes from Lakeshore Parkway, I-65 and Montgomery Highway, Vestavia Hills, and Downtown Homewood, the Building offers great connectivity.

This 34,153 SF building was built in 2021 and offers flexible floor plans with great window lines, ample surface and covered parking, and natural light.

## OFFERING SUMMARY

Lease Rate:	\$34.00/SF yr (Full Service)
Available SF:	3,984 SF - 21,614 SF
Building Size:	34,153 SF

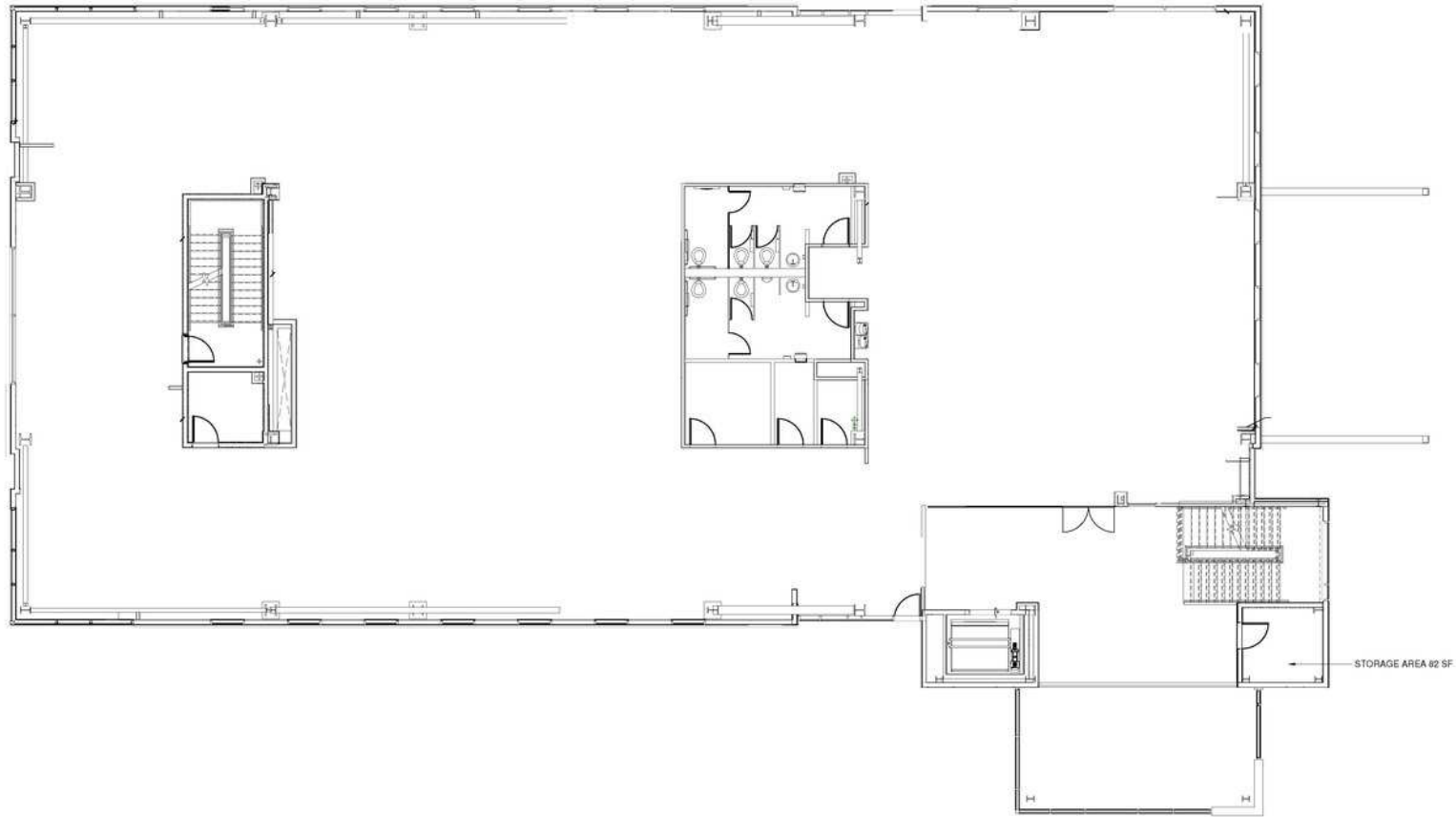
DEMOGRAPHICS	0.25 MILES	0.5 MILES	1 MILE
Total Households	292	1,113	3,877
Total Population	896	3,144	9,456
Average HH Income	\$99,612	\$102,052	\$108,123

**Philip Currie, SIOR, CCIM**

205.313.4369  
pcurrie@jhberr.com

**Jake Taylor**

205.313.4377  
jtaylor@jhberr.com



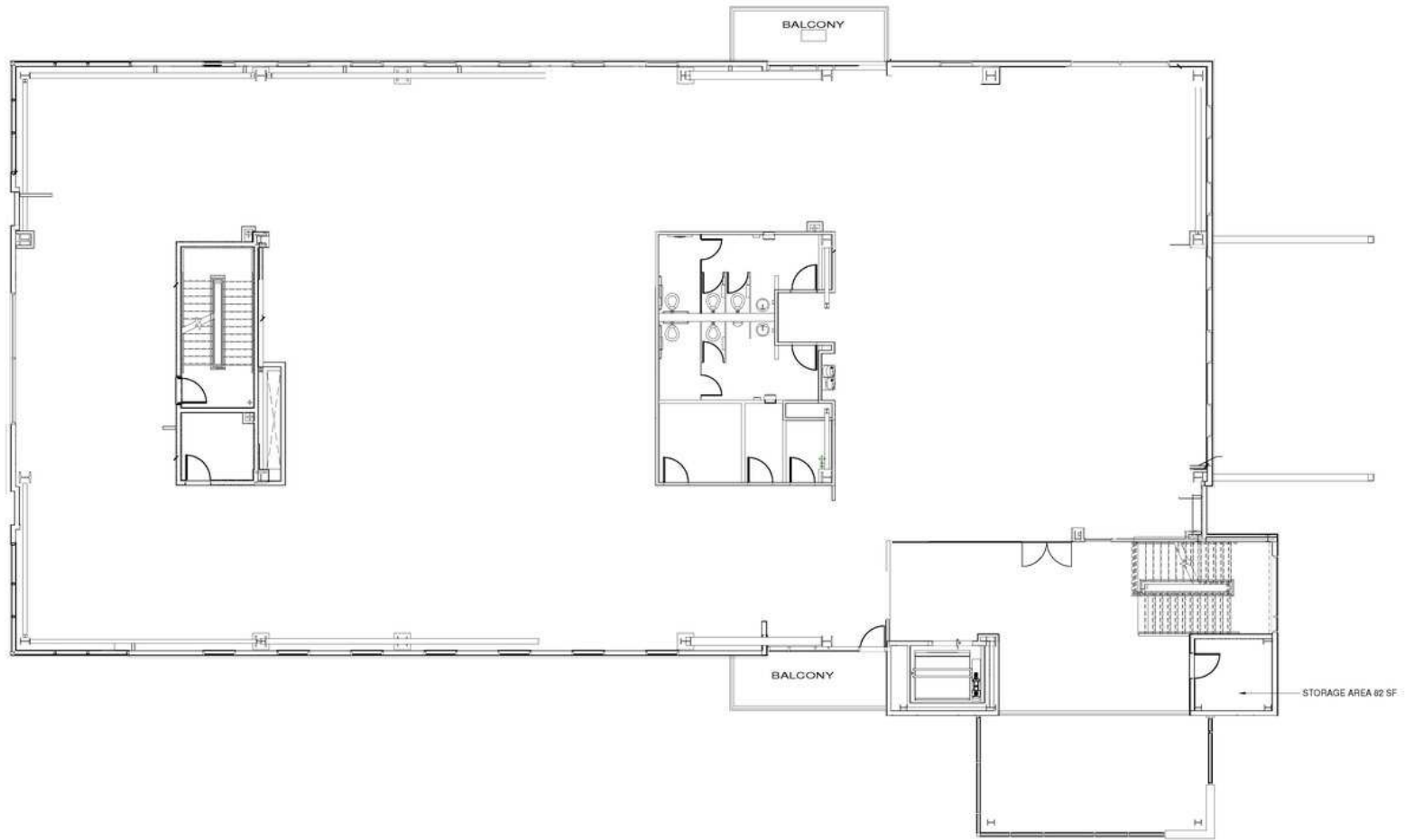
2nd Floor: 10,669 SF

**Philip Currie, SIOR, CCIM**

205.313.4369  
pcurrie@jhberr.com

**Jake Taylor**

205.313.4377  
jtaylor@jhberr.com



3rd Floor: 3,984 SF up to 10,945 SF

**Philip Currie, SIOR, CCIM**

205.313.4369

pcurrie@jhberry.com

**Jake Taylor**

205.313.4377

jtaylor@jhberry.com





**Philip Currie, SIOR, CCIM**

205.313.4369

pcurrie@jhberry.com

**Jake Taylor**

205.313.4377

jtaylor@jhberry.com