

CAR WASH FOR SALE

TOWER CAR WASH

2120 Main St Batavia, IL 60510



PROPERTY DESCRIPTION

Car wash on 1.5 acres in Batavia, IL off busy, Randall Road and Main Street. Surrounded by retail and rooftops.

CUSTOM HEADER

- Original construction 1991 - Conveyor and all equipment replaced new in 2018.
- Cloth brushes replaced 2025
- Chain replaced Spring 2025
- PECO Equipment
- Motor City Heavy Duty Conveyor, 126 ft long
- Tunnel length 210 ft
- 2 Detail Bays
- 480 Volt / 600 amp / Phase 3 electric power
- 6 inch water pipe

OFFERING SUMMARY

Sale Price:	Call Brian for Details
Lot Size:	62,268 SF
	1.5 acres

DEMOGRAPHICS	1 MILE	3 MILES	5 MILES
Total Households	2,087	20,148	42,300
Total Population	5,261	53,682	111,857
Average HH Income	\$163,369	\$174,461	\$154,479

Sandra True
(630) 248-7518

Brian Blackmore
(630) 207-8292



COLDWELL BANKER
COMMERCIAL
REALTY

CAR WASH PHOTOS

TOWER CAR WASH
2120 Main St Batavia, IL 60510



Sandra True
(630) 248-7518

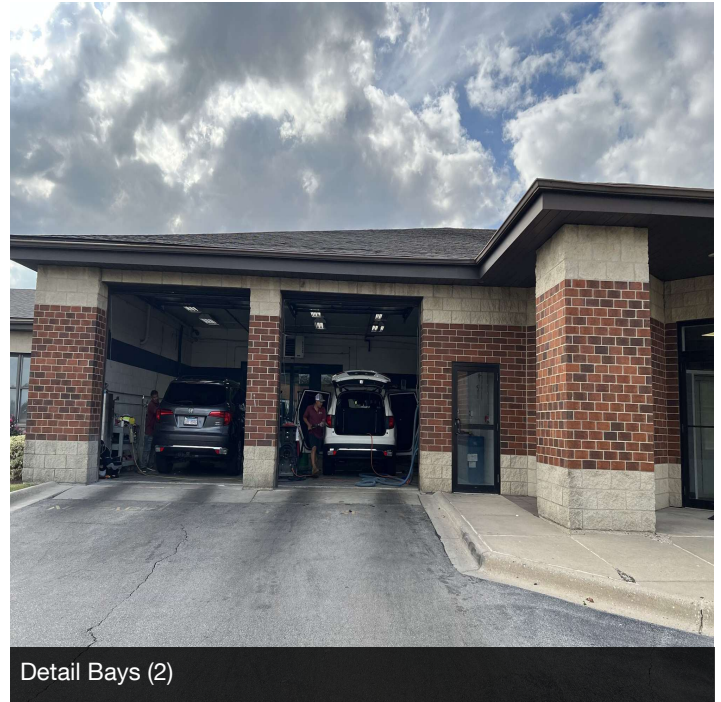
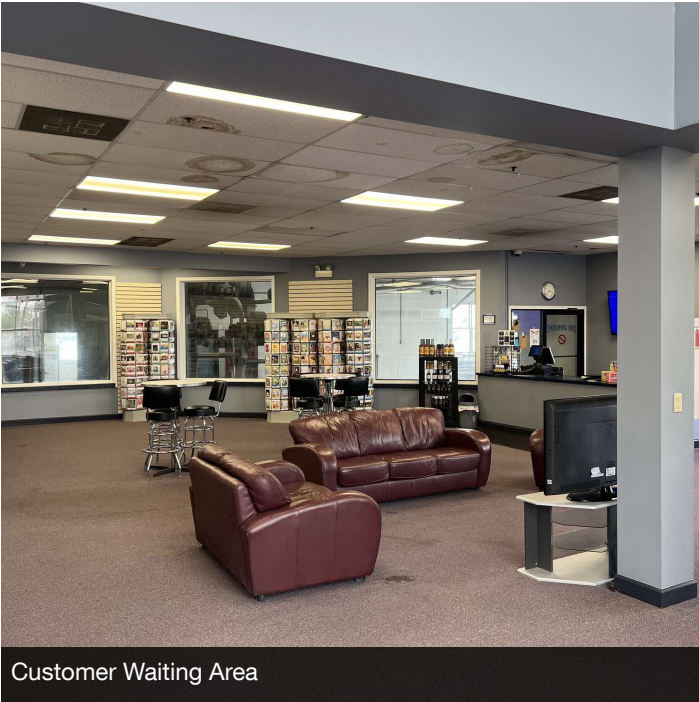
Brian Blackmore
(630) 207-8292



COLDWELL BANKER
COMMERCIAL
REALTY

CAR WASH PHOTOS

TOWER CAR WASH
2120 Main St Batavia, IL 60510



Sandra True
(630) 248-7518

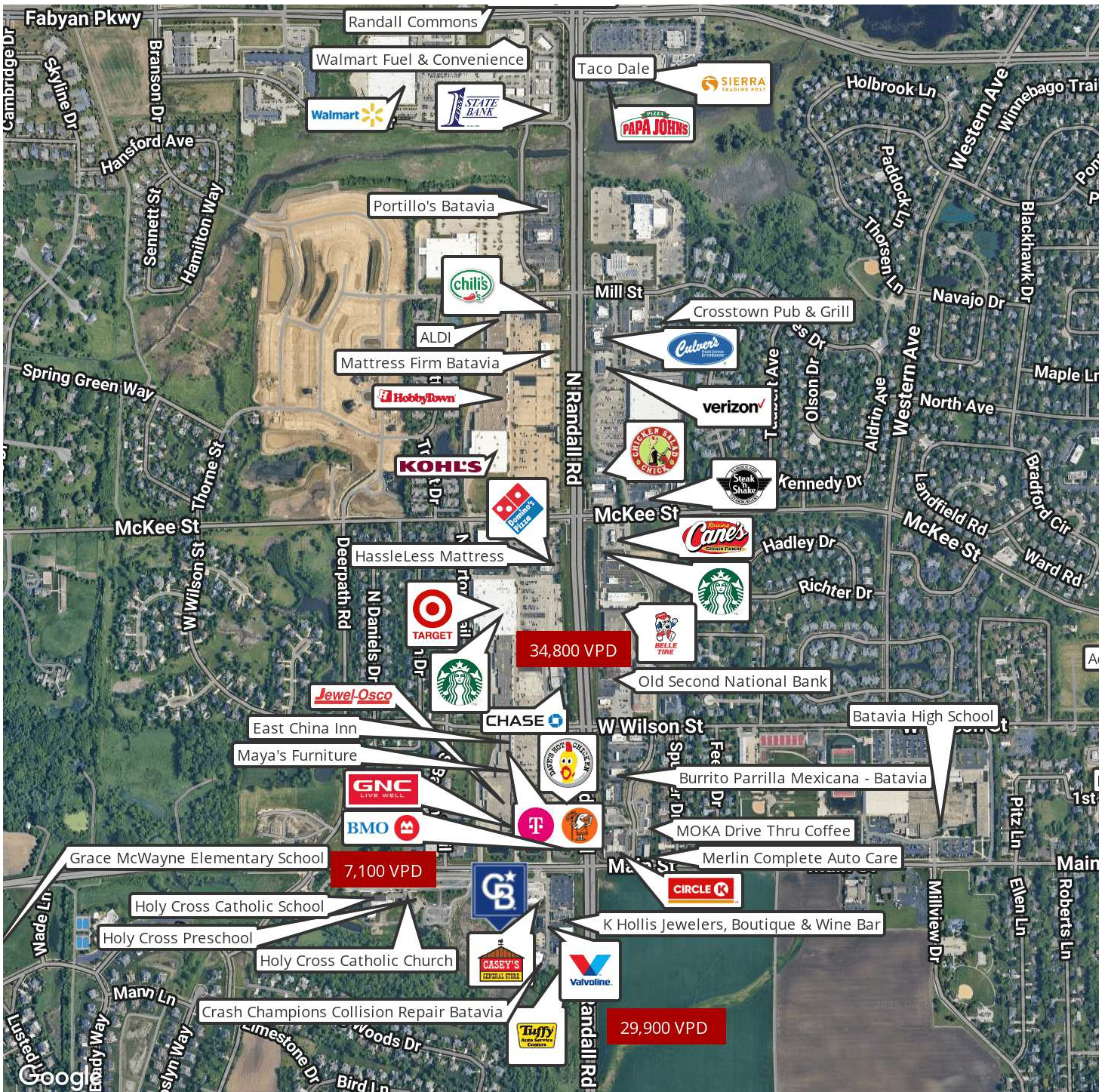
Brian Blackmore
(630) 207-8292



COLDWELL BANKER
COMMERCIAL
REALTY

RETAILER MAP

TOWER CAR WASH
2120 Main St Batavia, IL 60510



Sandra True
(630) 248-7518

Brian Blackmore
(630) 207-8292

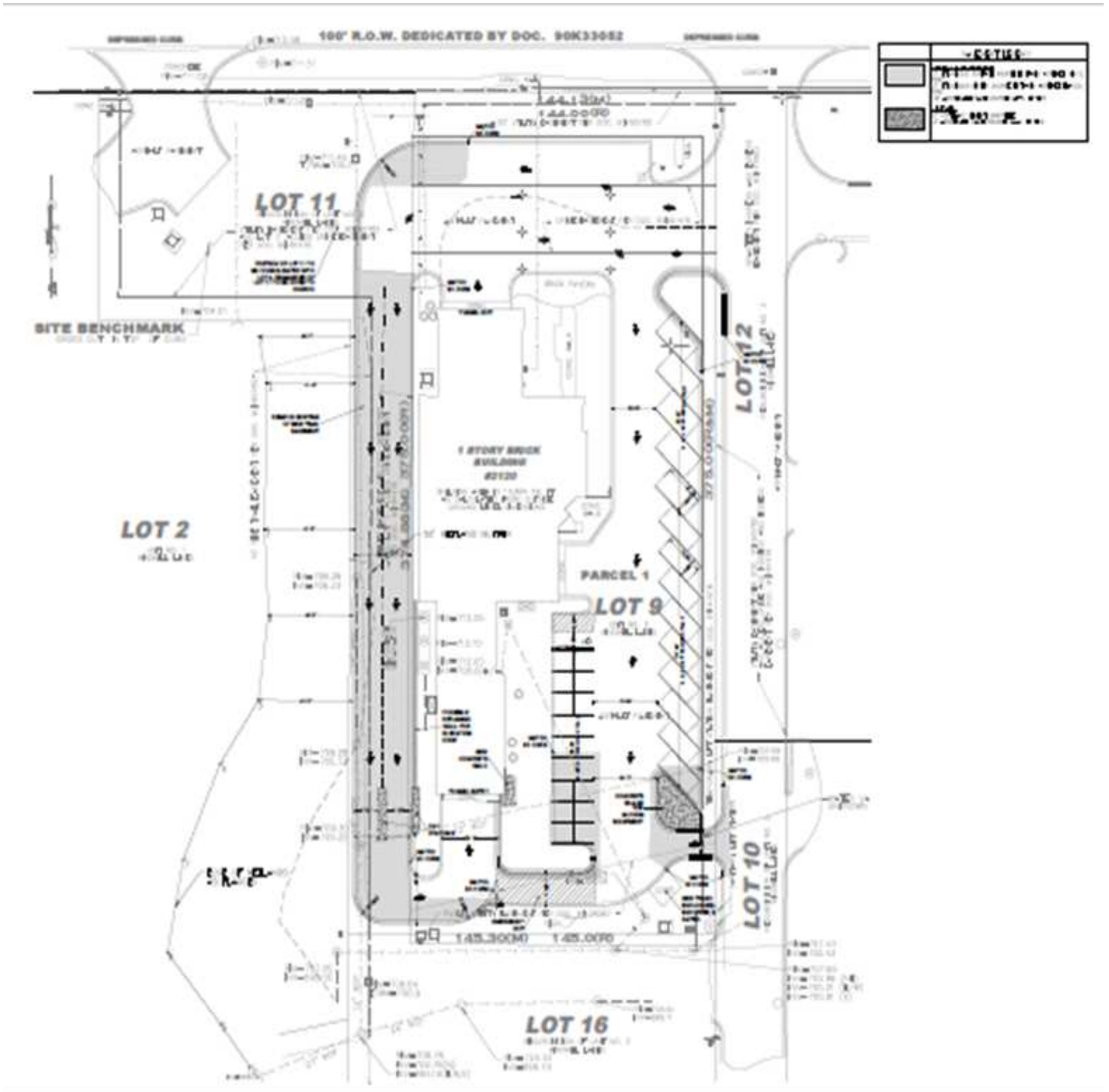


**COLDWELL BANKER
COMMERCIAL
REALTY**

QUICK WASH CONVERSION PLAN

TOWER CAR WASH

2120 Main St Batavia, IL 60510



Sandra True
(630) 248-7518

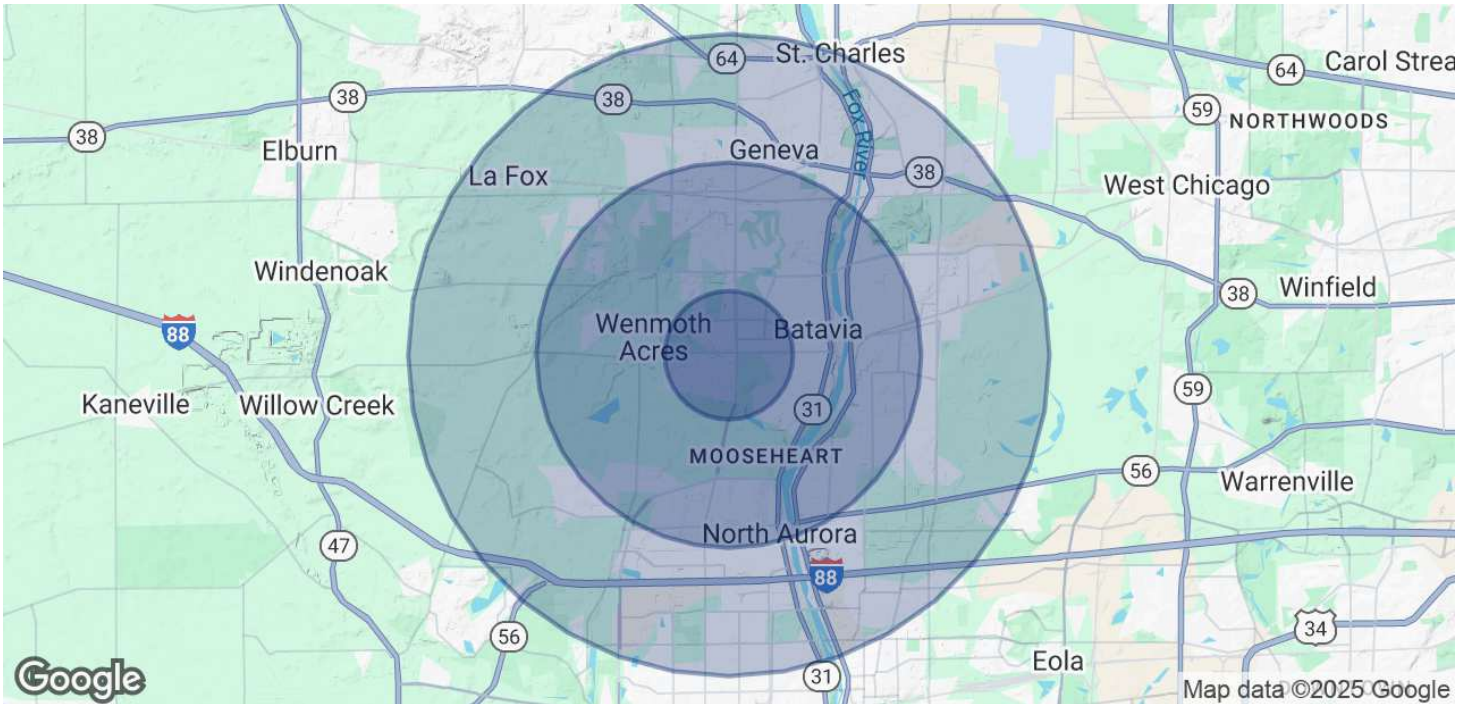
Brian Blackmore
(630) 207-8292



COLDWELL BANKER
COMMERCIAL
REALTY

DEMOGRAPHICS

TOWER CAR WASH
2120 Main St Batavia, IL 60510



POPULATION

	1 MILE	3 MILES	5 MILES
Total Population	5,261	53,682	111,857
Average Age	42	41	41
Average Age (Male)	41	40	39
Average Age (Female)	43	43	42

HOUSEHOLDS & INCOME

	1 MILE	3 MILES	5 MILES
Total Households	2,087	20,148	42,300
# of Persons per HH	2.5	2.7	2.6
Average HH Income	\$163,369	\$174,461	\$154,479
Average House Value	\$486,555	\$434,080	\$394,827

Demographics data derived from AlphaMap

Sandra True
(630) 248-7518

Brian Blackmore
(630) 207-8292



COLDWELL BANKER
COMMERCIAL
REALTY