

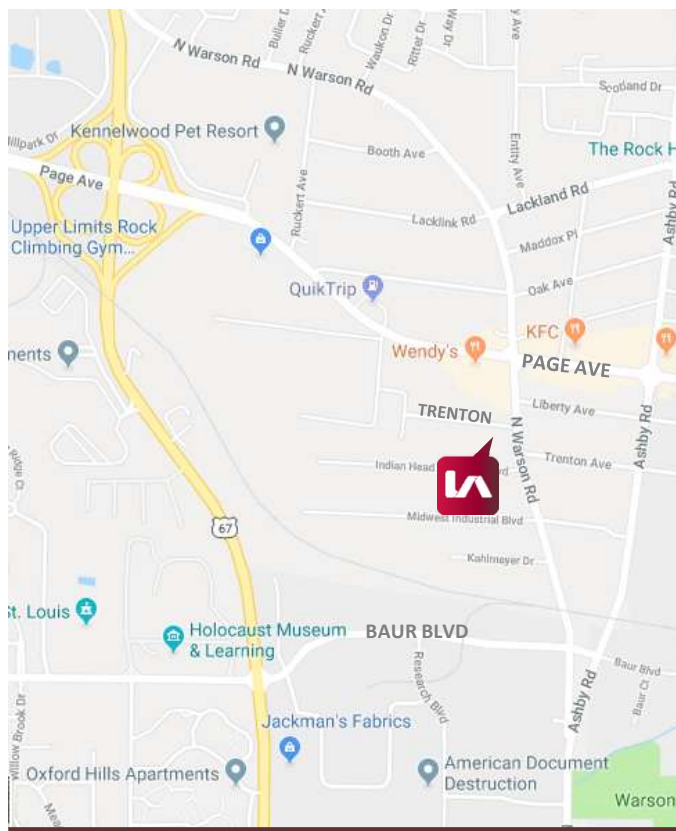


PROPERTY INFORMATION

AVAILABLE:	Suite 10702 – 3,280 SF
OFFICE:	24%
PARKING:	3:1000
CLEAR HEIGHT:	15'
LOADING:	1 Shared Loading Dock
EST OP EX:	\$3.90 psf
LOCATION:	Centrally Located Near Page Ave and Lindbergh Blvd
LEASE RATES:	\$7.50 psf, NNN

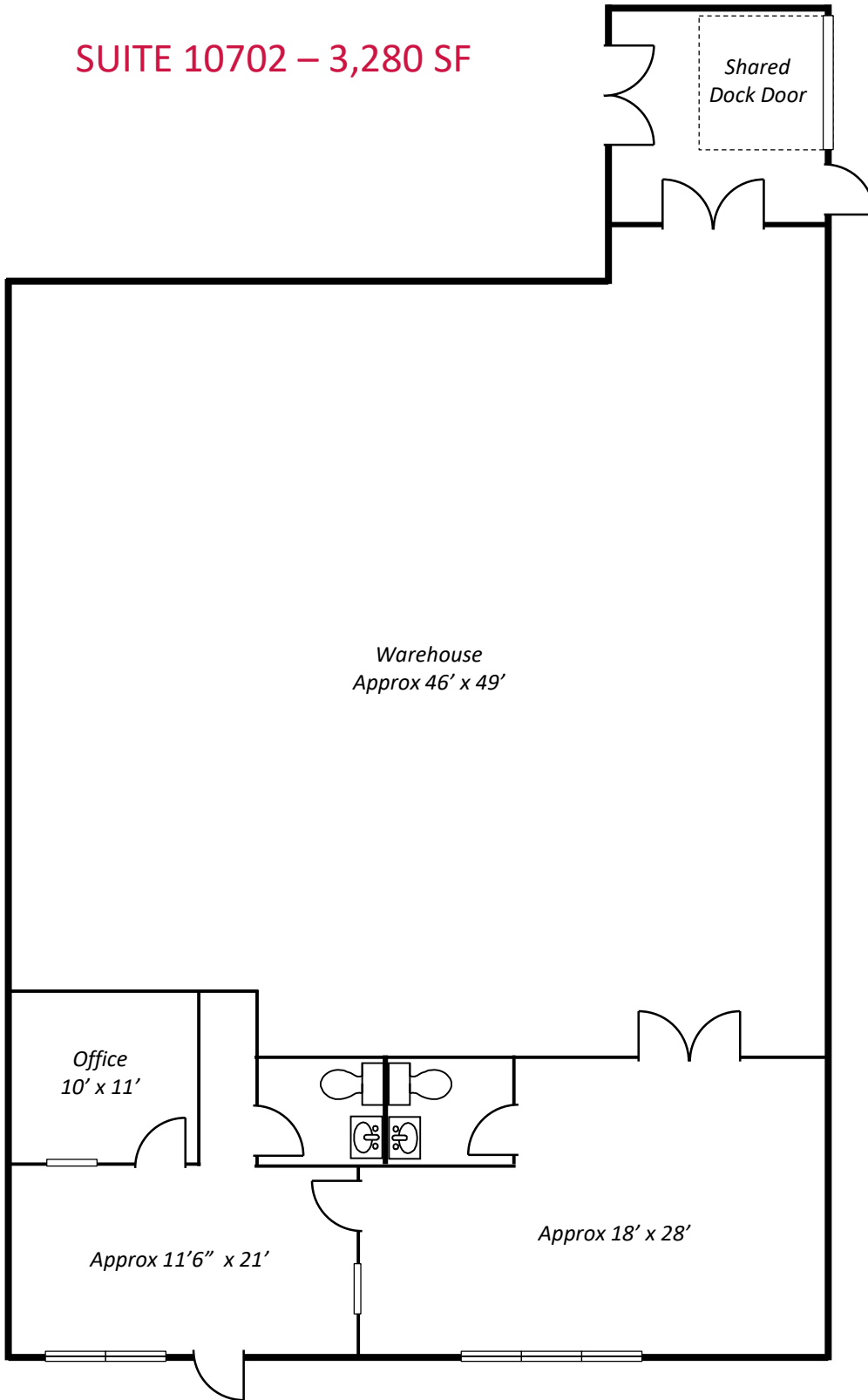
DAVID M. ZEIGLER, SIOR
dzeigler@lee-associates.com
D 314-400-4001
C 314-496-9023

ANTHONY P. HASEK, III
ahasek@lee-associates.com
D 314-400-4002
C 314-503-4533



All information furnished regarding property for sale, rental or financing is from sources deemed reliable, but no warranty or representation is made to the accuracy thereof and same is submitted to errors, omissions, change of price, rental or other conditions prior to sale, lease or financing or withdrawal without notice. No liability of any kind is to be imposed on the broker herein.

SUITE 10702 – 3,280 SF



- 24% Office
- 1 Shared Dock Door
- 15' clear

DAVID M. ZEIGLER, SIOR
dzeigler@lee-associates.com
D 314-400-4001
C 314-496-9023

ANTHONY P. HASEK, III
ahasek@lee-associates.com
D 314-400-4002
C 314-503-4533

All information furnished regarding property for sale, rental or financing is from sources deemed reliable, but no warranty or representation is made to the accuracy thereof and same is submitted to errors, omissions, change of price, rental or other conditions prior to sale, lease or financing or withdrawal without notice. No liability of any kind is to be imposed on the broker herein.