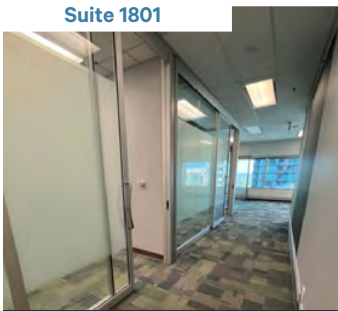


5160 YONGE STREET

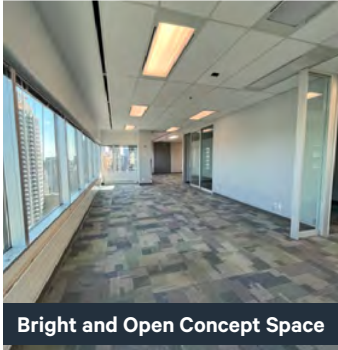
NORTH YORK, ON • NORTH YORK CENTRE

FOR SUBLEASE

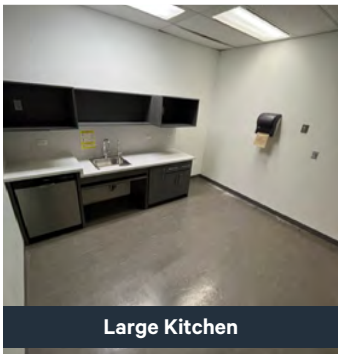
Suite 1801



Private Offices on Glass



Bright and Open Concept Space



Large Kitchen

CBRE

PROPERTY DETAILS

ADDRESS

NORTH YORK CENTRE
5160 Yonge Street, North York, ON

SUITE

1801

NET RENT

\$22.50 per sq. ft.

EXPIRY

May 31, 2031
(Short term lease opportunity available)

ADDITIONAL RENT

\$23.11 (2023)

AVAILABLE SQ. FT.

5,032 sq. ft.

PARKING RATIO

1 / 1,000 sq. ft. ratio

BUILDING HIGHLIGHTS



Located at the intersection of Yonge Street and Park Home Avenue in the North York Centre



Direct connection to North York Subway Station



Quick access to highway 400 series

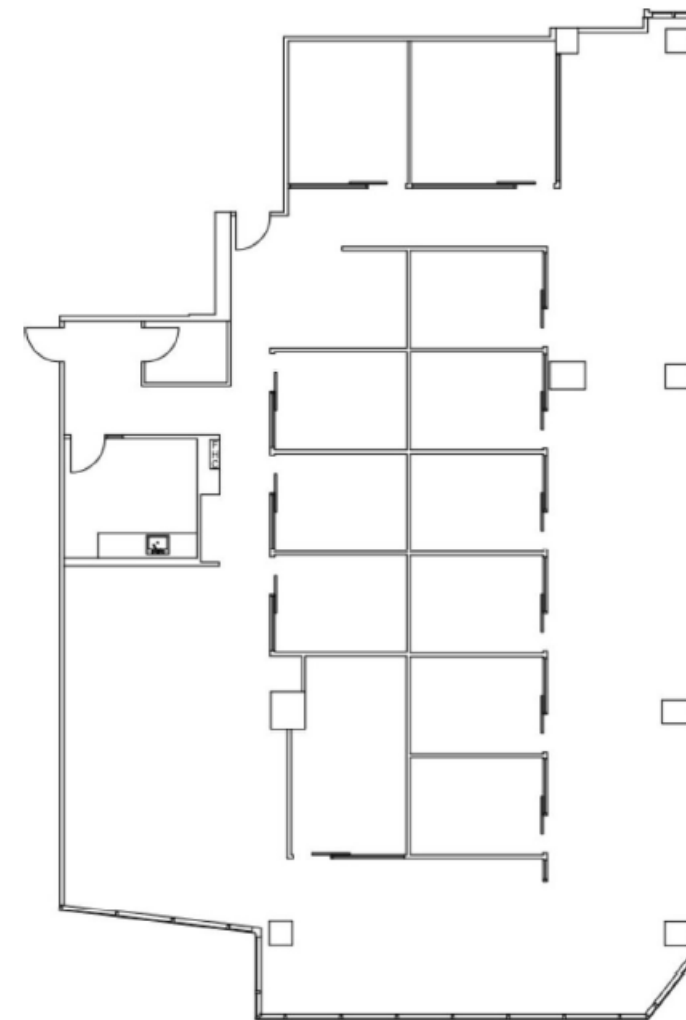


Concourse Level offers a large selection of amenities, and is path connected to Empress Walk

FLOORPLAN

SUITE 1801

5,032 sq. ft.



SUITE DETAILS



13 private offices on glass, with two larger offices that can be used as conference rooms



Reception space, kitchen, server room, and brightly lit open space for workstations or collaborative area



Large windows surrounding the perimeter of the suite with views overlooking Yonge Street and Park Home Avenue

LOCAL AMENITIES

IMMEDIATE ACCESS TO NORTH YORK CENTRE SUBWAY STATION AND SHOPPING CENTRE WITH A VAST SELECTION OF AMENITIES.

UNDERGROUND PARKING AVAILABLE WITH 3 FREE EV CHARGING STATIONS. \$180/MONTH TENANT UNRESERVED AND \$300/MONTH TENANT RESERVED.

UNDERGROUND ACCESS TO EMPRESS WALK OFFERING A VARIETY OF CONVENIENT RETAIL, FOOD, AND ENTERTAINMENT AMENITIES.



- | | | | |
|-----------------------|-----------------------------|----------------------------|------------------------|
| 1. METRO | 5. KINTON RAMEN | 9. TIM HORTONS | 13. NOMÉ IZAKAYA |
| 2. TD BANK | 6. THE KEG STEAKHOUSE + BAR | 10. BAKE CODE | 14. PARIS BAGUETTE |
| 3. BOSTON PIZZA | 7. CAFÉ LANDWER | 11. UNION SOCIAL EATERY | 15. WHOLE FOODS MARKET |
| 4. AROMA ESPRESSO BAR | 8. PIZZERIA LIBRETTO | 12. THE FROG: A FIRKIN PUB | 16. FOOD BASICS |

FOR MORE INFORMATION, PLEASE CONTACT:

Michelle Saberon* Senior Transaction Manager +1 416 495 6318 michelle.saberon@cbre.com	Tony Gill* Senior Vice President +1 416 495 6261 tony.gill@cbre.com
--	---

*Sales Representative | All Outlines Are Approximate | CBRE Limited, Brokerage | 2005 Sheppard Ave. E., #800, Toronto, ON M2J 5B4

This disclaimer shall apply to CBRE Limited, Real Estate Brokerage, and to all other divisions of the Corporation; to include all employees and independent contractors ("CBRE"). The information set out herein, including, without limitation, any projections, images, opinions, assumptions and estimates obtained from third parties (the "Information") has not been verified by CBRE, and CBRE does not represent, warrant or guarantee the accuracy, correctness and completeness of the Information. CBRE does not accept or assume any responsibility or liability, direct or consequential, for the Information or the recipient's reliance upon the Information. The recipient of the Information should take such steps as the recipient may deem necessary to verify the Information prior to placing any reliance upon the Information. The Information may change and any property described in the Information may be withdrawn from the market at any time without notice or obligation to the recipient from CBRE. CBRE and the CBRE logo are the service marks of CBRE Limited and/or its affiliated or related companies in other countries. All other marks displayed on this document are the property of their respective owners. All Rights Reserved. Mapping Sources: Canadian Mapping Services canadamapping@cbre.com; MapPoint, DMTI Spatial, EnviroNics Analytics, Microsoft Bing, Google Earth-