

PROSPECT YARDS 2-ACRE DEVELOPMENT SITE



EDDIE CHERRY, CCIM

Phone: 314.647.6611 ext. 113
Eddie@ManorRealEstate.com

BEN CHERRY, CCIM

Phone: 314.647.6611 ext. 115
Ben@ManorRealEstate.com

3500-3540 PAPIN ST & 3501-3511 CHOUTEAU AVE

ST. LOUIS, MO 63103

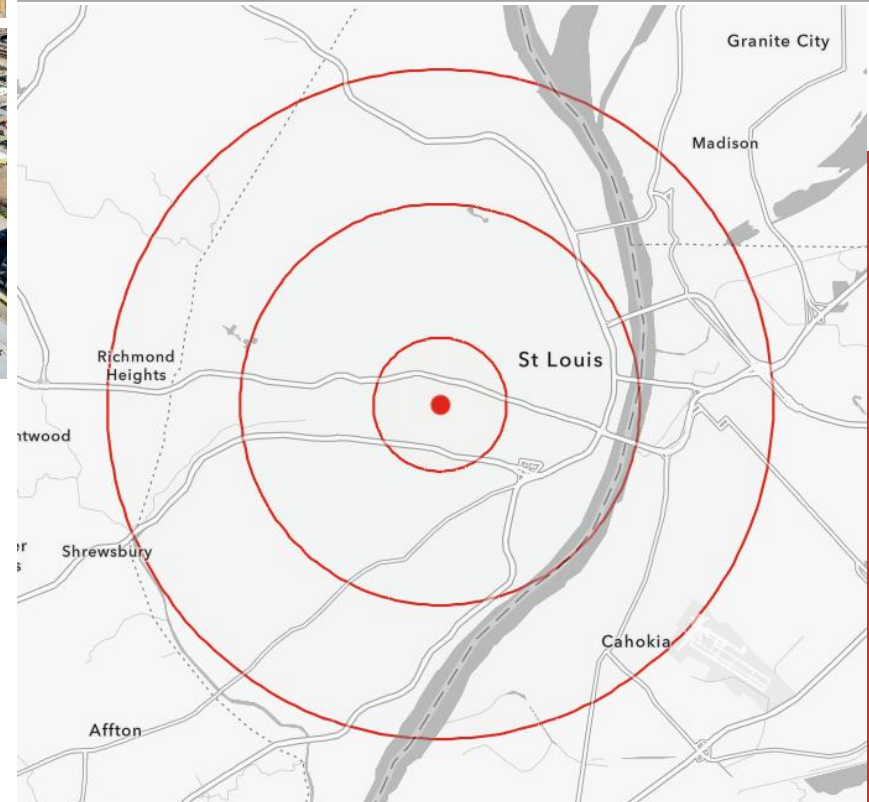
+/-2.00 ACRE | \$2,750,000 (\$31.56/S.F.)

PROPERTY INFORMATION



- CHAPTER 353 / SLMRC TAX ABATEMENT ELIGIBILITY — UP TO 20 YEARS OF RE TAX ABATEMENT ON IMPROVEMENTS
- ACROSS FROM SSM HEALTH SLU HOSPITAL (\$550M) & UNDER-CONSTRUCTION CARDINAL GLENNON CHILDREN'S HOSPITAL
- ADJACENT TO TARGET / THE EDWIN (70K SF TARGET + 196 APTS, 2023) AND MIDTOWN TOPGOLF
- SAINT LOUIS UNIVERSITY: 15,000+ STUDENTS; NORTH & SOUTH CAMPUSES FLANK THE CORRIDOR
- CITY FOUNDRY STL (\$350M, 4M+ ANNUAL VISITORS) | GRAND METROLINK STATION 0.4 MILES | BRICKLINE GREENWAY
- FLEXIBLE SALE: +/-2.00 AC ASSEMBLAGE OR SPLIT — +/-1.50 AC HOTEL SITE (PAPIN) + +/-0.50 AC QSR/RETAIL (CHOUTEAU)

DEMOGRAPHICS		1 MILE	3 MILES	5 MILES
POPULATION		15,831	138,482	292,939
HOUSEHOLDS		6,880	73,263	147,299
AVERAGE HH INCOME		\$87,397	\$94,611	\$93,249



EDDIE CHERRY, CCIM

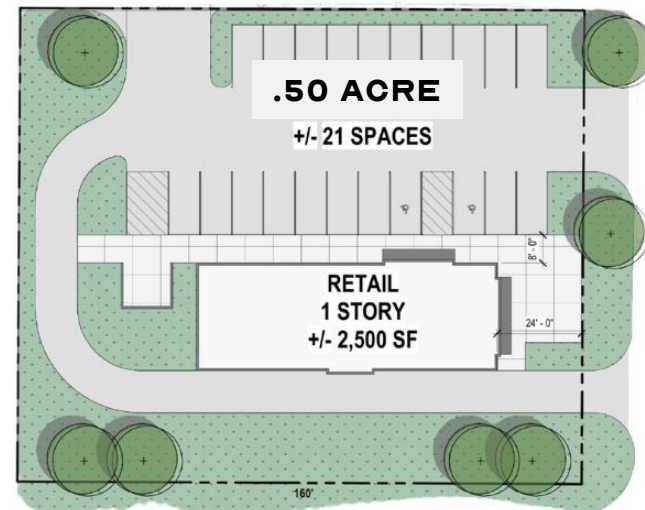
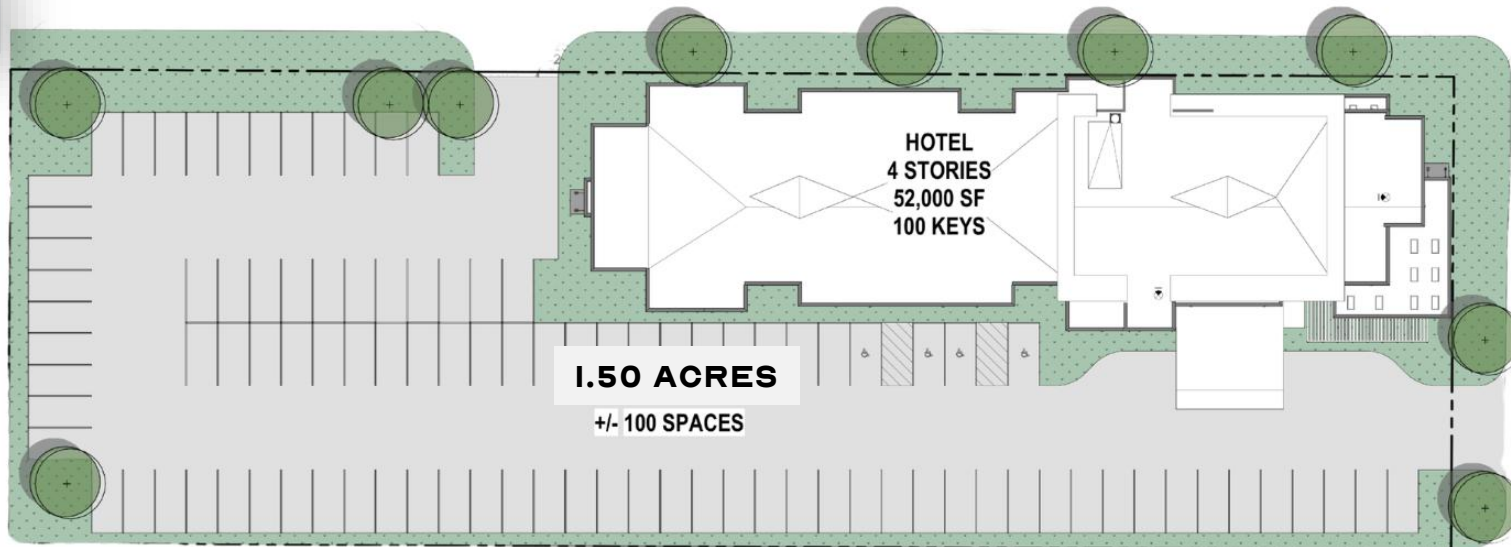
Phone: 314.647.6611 ext. 113
Eddie@ManorRealEstate.com

BEN CHERRY, CCIM

Phone: 314.647.6611 ext. 115
Ben@ManorRealEstate.com

3500-3540 PAPIN ST & 350I-35II CHOUTEAU AVE
ST. LOUIS, MO 63103
+/-2.00 ACRE | \$2,750,000 (\$31.56/S.F.)

**CONCEPTUAL
PLAN**



EDDIE CHERRY, CCIM

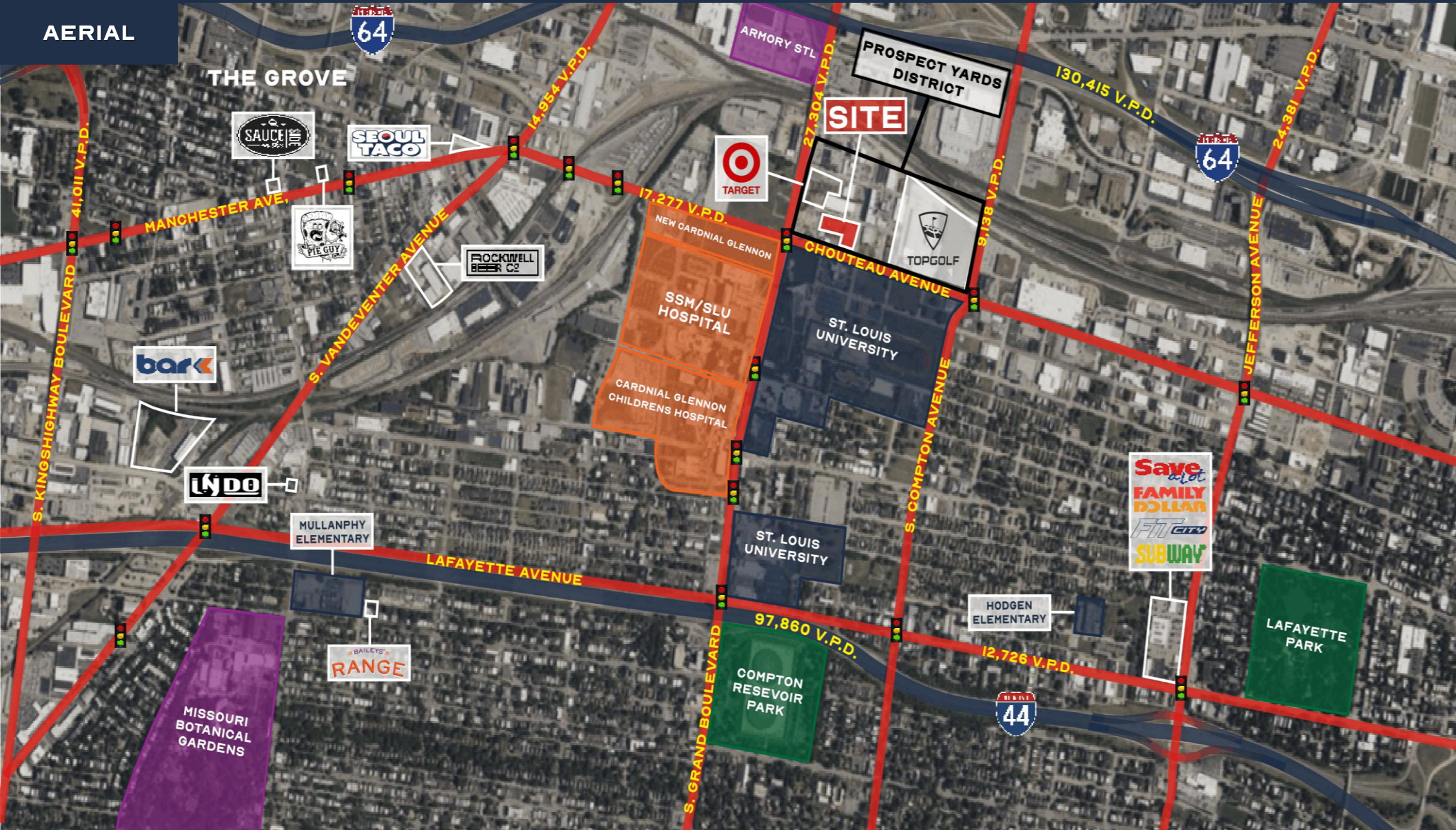
Phone: 314.647.6611 ext. 113
Eddie@ManorRealEstate.com

BEN CHERRY, CCIM

Phone: 314.647.6611 ext. 115
Ben@ManorRealEstate.com

3500-3540 PAPIN ST & 350I-35II CHOUTEAU AVE
ST. LOUIS, MO 63103
+/- 2.00 ACRE | \$2,750,000 (\$31.56/S.F.)

AERIAL



EDDIE CHERRY, CCIM

Phone: 314.647.6611 ext. 113
 Eddie@ManorRealEstate.com

BEN CHERRY, CCIM

Phone: 314.647.6611 ext. 115
 Ben@ManorRealEstate.com

3500-3540 PAPIN ST & 3501-3511 CHOUTEAU AVE

ST. LOUIS, MO 63103

+/-2.00 ACRE | \$2,750,000 (\$31.56/S.F.)