

OFFICE/WAREHOUSE BUILDING

FOR SALE | LITTLE ROCK, AR

Commercial
Realty LLC

LOCATION

- #1 Remington Drive behind Tractor Supply

SIZE

- 15,284 Sq. Ft. Total
- 9,859 Sq. Ft. heated warehouse
- 5,341 Sq. Ft. Office Area
- 84 Sq. Ft. Demarcation Room
- Potential for 3 different suites

SALES PRICE

- \$4,200,000.00

HIGHLIGHTS

- Three (3) 10 x 10 roll up doors with access to dock high sunken truck well
- Back up generator for the entire building and sprinkled
- Excellent Security Lighting
- 47 Parking Spaces



Contact Us:

JACQUELINE BOYETTE

M: 501.519.4008 | D: 501.219.0919

jboyette@commercialrealtyllc.com

Commercial Realty, LLC

#1 Remington Drive, Suite 100

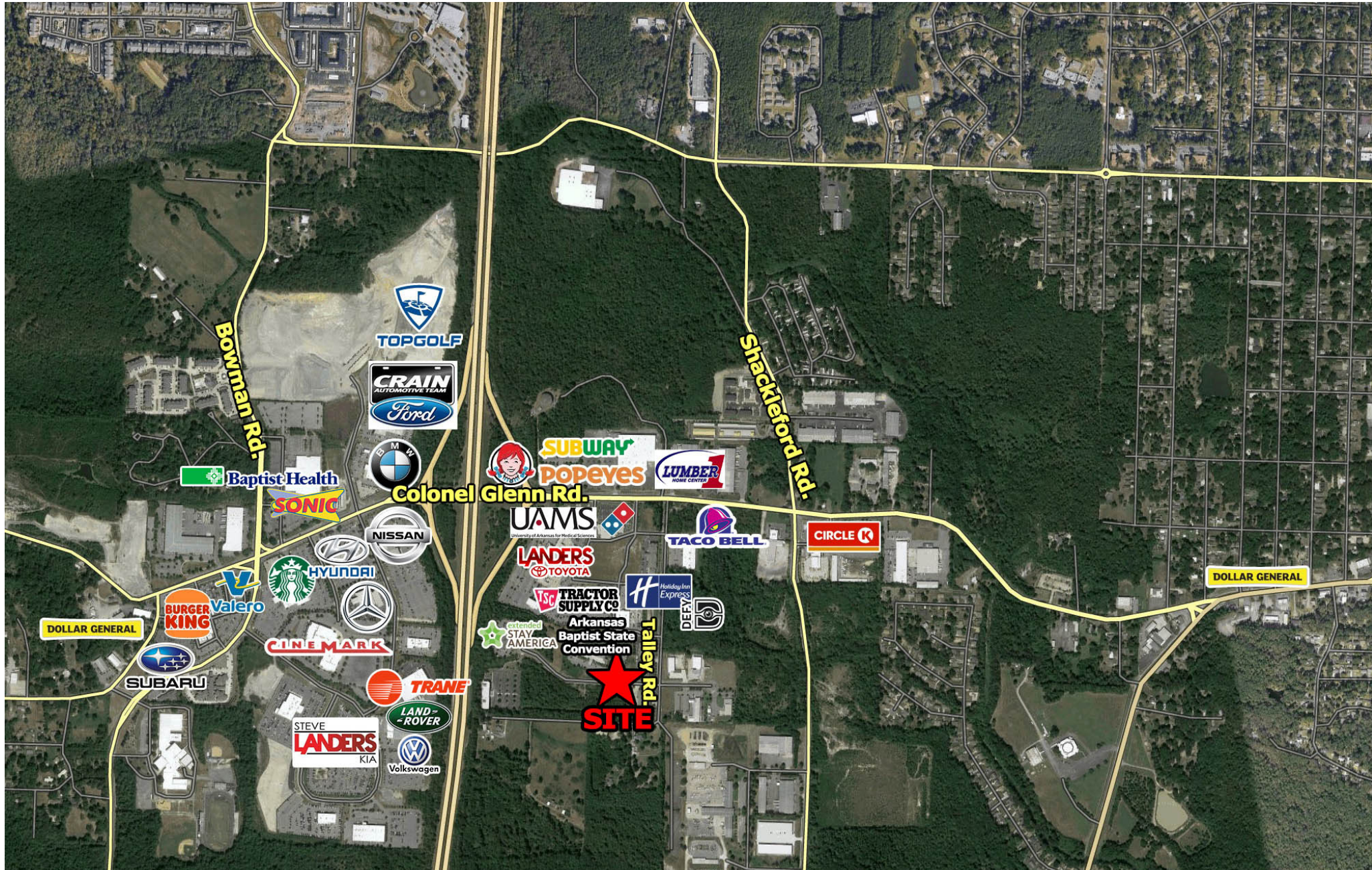
Little Rock, Arkansas 72204

501.219.0919

Aerial

#1 Remington Drive | Little Rock, AR

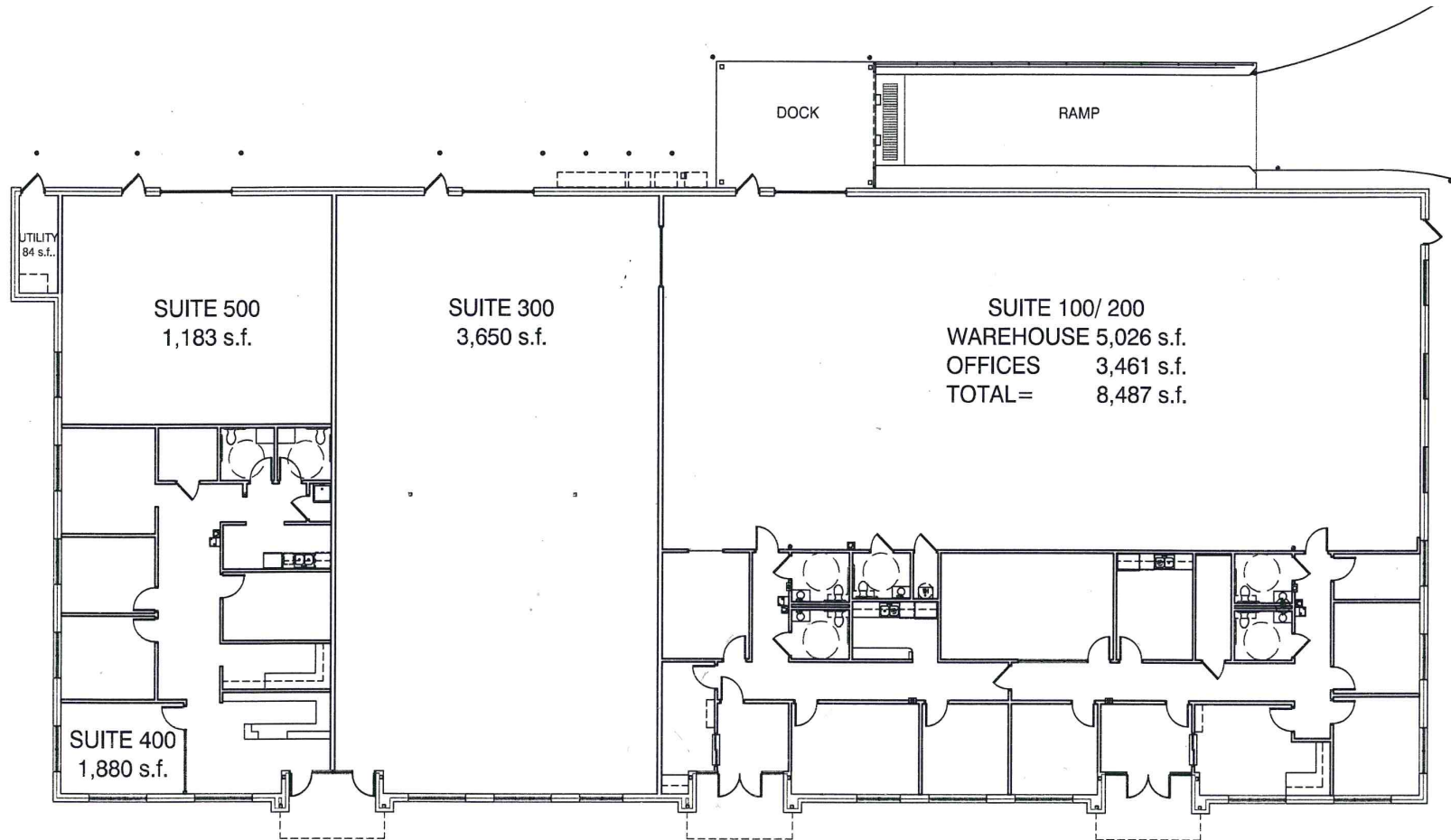
Commercial
Realty LTC



Floor Plan

#1 Remington Drive | Little Rock, AR

Commercial
Realty LLC



REMINGTON ROAD OFFICE BUILDING SUITES 100 THROUGH 500

- One (1) 10x10 roll up door that has dock high sunken truck well
- Two (2) 10x10 roll up drive in doors
- Four (4) front entrance doors to spaces
- 14' warehouse clear height
- Entire Building is Sprinkled